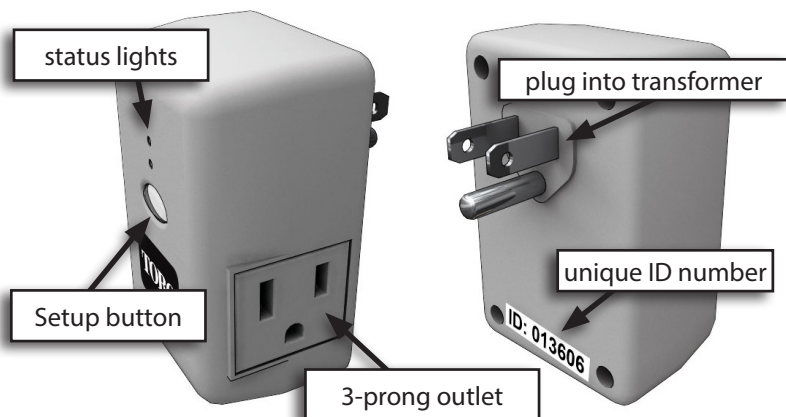


EVOLUTION® Series Add-On: EVO-AR Auxiliary Relay

Auxiliary Relay Overview



Specifications

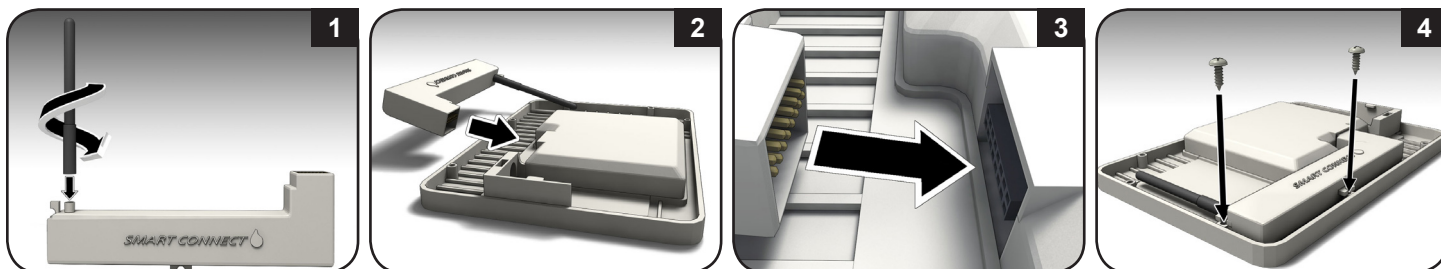
- **RF reception range:**
externally mounted: 1000' (305 m) LOS (line of sight)
inside a metal transformer cabinet: 500' (152 m) LOS
- **Operating temperature range:**
14° – 140° F (-10° – 60°C)
- **Warranty:** Five years



FCC-ID: OF7LPCU
IC: 3575A-LPCU



Smart Connect™ Installation



EVO-AR Installation

WARNING: Disconnect power to transformer before installing EVO-AR.



The EVO-AR works with any residential transformer with an internal AC outlet. One can also plug the AR unit directly into a wall outlet and then plug an electronic device into the AR's own outlet, such as holiday lights or a fountain.

Controlling the Auxiliary Relay from the EVOLUTION Controller

EVOLUTION Menu Navigation

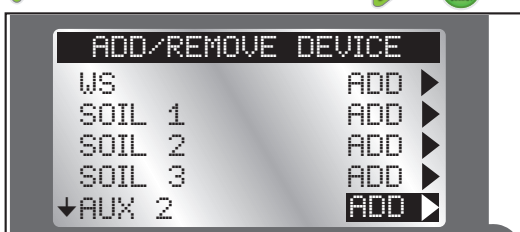
1. Use or to navigate the menu commands.
2. Press or to *move* to the desired field.
3. Press and to *adjust* the value.
4. Press **SELECT** to input the desired value.

Adding the Auxiliary Relay

1. Note the unique ID number on the back of the device. Plug back into transformer when done.
2. Press then .
3. Press to **ADD/REMOVE DEVICE**. Press .



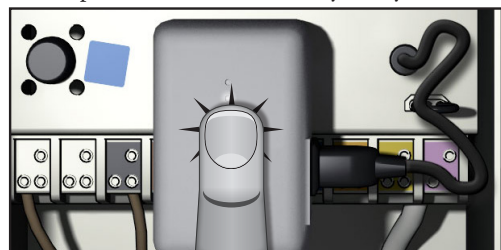
4. Press to **AUX 2** or **AUX 3**. Press or to **ADD**.



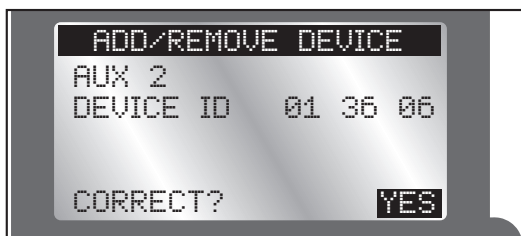
5. The EVOLUTION controller prompts the user to press the button on the AR to link the devices immediately.



6. Press the Setup button on the Auxiliary Relay unit.



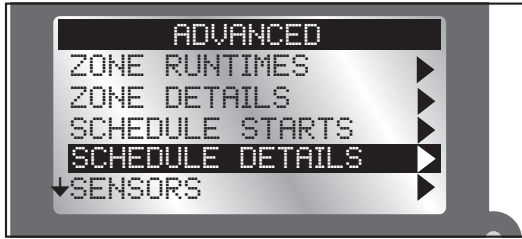
7. The controller will detect the AR. Confirm that the device ID detected matches the AR ID.



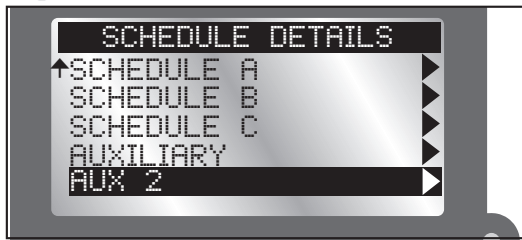
- If it does match, press . If it does *not* match, change to NO, press , and repeat steps 3-8.

Getting to the Auxiliary Relay Menu

- Press **ADVANCED** then .
- Press to **SCHEDULE DETAILS** then press .



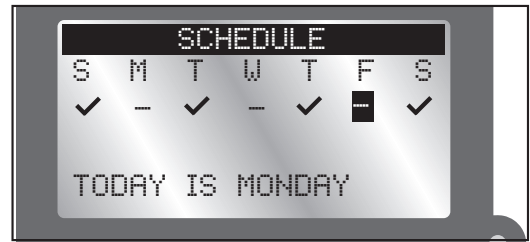
- AUX 2 and AUX 3 are the schedules to control the EVO-AR relays (for AUXILIARY, see note below).
- Press to move to the schedule to adjust.



- Press or to enter the selected AUX menu.

AUXILIARY allows the controller to control a wired device such as a wired relay pump or fountain. **AUX 2** and **AUX 3** are for wireless devices connected to an EVO-AR.

- Press or to enable or disable a day. (A is an “enabled” day.)



- Press to commit the changes.

Start / End

Set the start and end times of the AUX 2/3 schedule. For a residential transformer controlling lights, a start time and end time of 7pm and 11pm (respectively) might be desirable.

To turn the schedule off, “OFF” is between 11AM and 12AM.)

- Press to **START**.
- Press or . The hour field will be highlighted.
- Press or to change the hour value.
- Press to move to the next field.
- Press or to change the highlighted value.
- Repeat steps 4 and 5 to adjust AM/PM.
- Press to commit the changes.

ID

This field is display-only and shows the ID of the AUX device.

Erase Schedule

Erase the schedule of the AUX device. You will be prompted to confirm schedule deletion.

The AUX Menu

Status

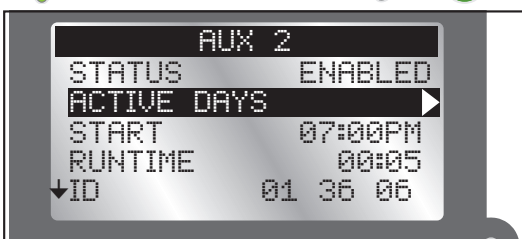
Enable or disable the AUX 2 or 3 schedule without having to actually delete the schedule. For example, one might disable backyard lights and/or fountain while one is on vacation.

- Press to **ENABLED** field.
- Press or to enable or disable the schedule.
- Press to commit the selection.

Active Days

Set the days that the AUX schedule will be active.

- Press to **ACTIVE DAYS**. Press or .

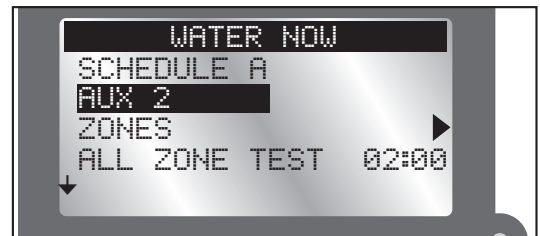


- Press or to move from day to day.

Manual Operation

It is possible to manually begin the AUX2 or AUX3 schedule from the EVOLUTION® controller. The Auxiliary Relay must be enabled and scheduled.

- Press **WATER NOW**.
- Press to select the enabled auxiliary schedule: **AUX 2** or **AUX 3**.



Press . The auxiliary system will turn on.

- At the **HOME** screen, press to review how long the auxiliary system will be active.
- To stop an auxiliary schedule, press **WATER OFF**.

For more information about the EVO-AR, including support information, please point your browser to www.toro.com/evolution.

FCC Notice

This device complies with part 15 of the FCC rules. Operation is subject to the following two conditions:

(1) this device may not cause harmful interference, and (2) this device must accept any interference received, including interference that may cause undesired operation.

FCC Note: The manufacturer is not responsible for any radio or TV interference caused by unauthorized modifications to this equipment. Such modifications could void the user's authority to operate the equipment.

Note: This equipment has been tested and found to comply with the limits for a Class B digital device, pursuant to Part 15 of the FCC Rules. These limits are designed to provide reasonable protection against harmful interference in a residential installation. This equipment generates, uses and can radiate radio frequency energy and, if not installed and used in accordance with the instructions, may cause harmful interference to radio communications. However, there is no guarantee that interference will not occur in a particular installation. If this equipment does harmful interference to radio or television reception, which can be determined by turning the

equipment off and on, the user is encouraged to try to correct the interference by one or more of the following measures:

- Reorient or relocate the receiving antenna.
- Increase the separation between the equipment and receiver.
- Connect the equipment into an outlet on a circuit different from that to which the receiver is connected.
- Consult the dealer or an experienced radio/TV technician for help.

The user may find the following booklet prepared by the Federal Communications Commission helpful:

“How To Identify and Resolve Radio-TV Interference Problems.” This booklet is available from the U.S. Government Printing Office, Washington, DC 20402, stock # 004-000-00345-4.

This Class B digital apparatus complies with Canadian ICES-003. International: This is a CISPR 22 Class B product.