 <p>S. QUIRICO DI TRECASALI (PARMA)-ITALIA</p>	<p>IRRIGATORE SEMOVENTE MOD. 540GX SELF-PROPELLED SPRINKLER MODEL 540GX IRRIGATEUR AUTOMOTEUR MODÈLE 540GX SELBSTFAHRENDE BEWÄSSERUNGSAPPARAT MOD. 540GX ZELFRIJDANDE SPROEIER TYPE 540GX</p>	<p>Pag.70</p>
---	--	---------------

Esploso I0540EGXA
MACCHINA IRRIGATRICE SUPER RAIN 540 GX EXPORT

Note

POS. Pos. Pos. Pos.	PAG. Page Seite Pagina	DENOMINAZIONE Appellation Denomination Bezeichnung Denombrocion	U.M.	N.PEZZI N.Pieces N.Pieces N.Teile N.Plez	CODICE Code Code Kode Codigo	NOTE Annotation Note Aufzeichnung Nota
1	70	540 LOWER CHASSIS	n	1,00	5400012Z	
2	70	540 UPPER CHASSIS	n	1,00	5400011Z	
3	70	UO1 L050 TURNTABLE	n	1,00	5400103	
4	70	WHEEL 145/80-13 4F.BAL	n	2,00	5400115	
5	70	AXLE 35X35 L=1050 4 COLUMNS	n	1,00	5400102	
6	70	TRESTLE M10	n	2,00	5400113	
7	70	GEARBOX HANDLE	n	1,00	5800041	
8	70	TURNTABLE STOP SECTOR	n	1,00	5400024	F.54010
9	70	PIN FOR TURNTABLE STOP	n	1,00	5400048	F.54010
9	70	PIN FOR TROLLEY ADJUSTING D.14	n	1,00	5800042Z	D.54011
10	70	BEARING 6202 2 RS FAG	n	1,00	4011110	
11	70	NUT M14 X 1,5 LOW	n	2,00	4010131	
12	70	BEARING 6302 2 RS FAG	n	1,00	5400104	
13	70	TURBINE COVER	n	1,00	5400007	
14	70	COTTER 4X4X15	n	1,00	4010130	
15	70	TURBINE SHAFT	n	1,00	4010004	
16	70	RING A-14 UNI 7433/75	n	1,00	4010129	
17	70	OR 2125	n	1,00	4010127	
18	70	SPACER FOR MECHANICAL SEAL	n	1,00	4010006	
19	70	SEAL PR/PNT 15X28 -71500195-	n	1,00	4010125	
20	70	TURBINE IMPELLER	n	1,00	4010003	
21	70	GALVAN.WASHER 8,4 X 1	n	1,00	2000107	
22	70	SELFLOCKING NUT M8	n	1,00	4010103	
23	70	SPACER	n	1,00	5400009	
24	70	OR 3625 (2.164) CORTECO	n	1,00	4010126	
25	70	SCREW TCEI M6 X 30	n	1,00	4010132	
26	70	SCREW TCEI M6 X 65	n	5,00	4010137	

CONTINUA

Note

Esploso I0540EGXA
MACCHINA IRRIGATRICE SUPER RAIN 540 GX EXPORT

Note

POS. Pos. Pos. Pos.	PAG. Page Seite Pagina	DENOMINAZIONE Appellation Denomination Bezeichnung Denombrocion	U.M.	N.PEZZI N.Pieces N.Pieces N.Teile N.Plez	CODICE Code Code Code Codigo	NOTE Annotation Note Aufzeichnung Nota
27	70	MEDIUM NUT M 6	n	5,00	4010117	
28	70	TURBINE FRAME	n	1,00	4011001	
29	70	NOZZLE K1 (D.12)	n	1,00	4010135	
30	70	RUBBER SEAL TURBINE 401	n	1,00	4010019	
31	70	M5 SELF-LOCKING NUT	n	1,00	2000207	
32	70	SCREW M5 X 15	n	1,00	4010104	
33	70	INOX WASHER FOR BY-PASS	n	1,00	4010017	
34	70	BY-PASS VALVE SHAFT	n	1,00	4010020	
35	70	OR 108	n	2,00	5800213	
36	70	BY-PASS LEVER	n	1,00	4010021Z	
37	70	SCREW M5X8 CONIC POINT	n	1,00	4010113	
38	70	SCREW TE M 8 X 20	n	4,00	4010136	
39	70	HUB D.25 M6X15	n	1,00	2000105	
40	70	MANOMETER 1/8"	n	1,00	3000110	
41	70	AUTOMATIC BY-PASS LEVER	n	1,00	5400029Z	
42	70	TURBINE OUTLET PIPE	n	1,00	5400031Z	
43	70	CLAMP GOLD 58-63	n	2,00	5400126	
44	70	PLUG GJ 1/4"M.	n	1,00	5800208	
45	70	DRAWBAR JACK	n	1,00	5400051	
46	70	KNOB 60X20 FIL.10X25	n	1,00	5800102	
47	70	BRAKE TABLETS COUPLE	n	1,00	5400021	
48	70	TURBINE INLET PIPE	n	1,00	5400042Z	
49	70	TURBINE INLET HOSE TAIL	n	1,00	5400043Z	
50	70	BAUER HK 50 SEAL	n	2,00	5400110	
51	70	MALE FOR JOINT	n	2,00	5400120	
52	70	HOSE OSLO 10 51X57	m	4,00	5400116	
53	70	BAUER HK 50 FEMALE JOINT	n	1,00	5400109	GR.

CONTINUA

Note

Esploso I0540EGXA
MACCHINA IRRIGATRICE SUPER RAIN 540 GX EXPORT

Note

POS. Pos. Pos. Pos.	PAG. Page Seite Pagina	DENOMINAZIONE Appellation Denomination Bezeichnung Denombrocion	U.M.	N.PEZZI N.Pieces N.Pieces N.Teile N.Plez	CODICE Code Code Code Codigo	NOTE Annotation Note Aufzeichnung Nota
54	70	TABLETS SUPPORT	n	1,00	5400023	F.54040
55	70	PTO SHAFT WITH DISK	n	1,00	5400022Z	
56	70	COMER D-741A GEARBOX	n	1,00	5400101	V.PAG.20
57	70	BEARING 6200 2 RS	n	1,00	5400121	OP-F.54056
58	70	TRANSMISSION BELT	n	1,00	5400122	OP-F.54056
59	70	MAGNET PULLEY (TACHOMETER)	n	1,00	5400044	OP-F.54056
60	70	TRACTOR PULLEY	n	1,00	5400019	
61	70	TRANSMISSION BELT	n	1,00	5400020	
62	70	DRIVEN PULLEY	n	1,00	5400018	
63	70	ELASTIC PIN 6X50 "SPIROL"	n	1,00	5800205	
64	70	GO-STOP LEVER	n	1,00	5400030	F.54056
64	70	GO/STOP LEVER ON GEARBOX	n	1,00	5401030Z	D.54057
65	70	TACHOMETER CYTEC 05	n	1,00	5800501	
66	70	TACHOMETER SUPPORT	n	1,00	5400032Z	
67	70	PINION Z 8 M7 H-41	n	1,00	5400006	
68	70	TURBINE SAFETY PROTECTION	n	1,00	5400041	
69	70	HINGE FOR SAFETY PROTECTION	n	1,00	5400117	L.4000126
70	70	CHAIN CONNECTING MESH 3/8" S	n	1,00	4000102	
71	70	CHAIN SAFETY PROTECTION	n	1,00	5400040	
72	70	CHAIN 3/8" S	m	1,80	4000101	
73	70	PINION 3/8" Z 19	n	1,00	4000010	Z...
74	70	SUPPORT UCP 206 NBR	n	1,00	5800118	
75	70	TUBO PE MD D. 63 SP.5,00 195 ML.	n	1,00	TMD0630500195	
75	70	TUBO PE BD PN6 Ø50 SP.4,3 170M	n	1,00	TBD0500430170	
76	70	CLAMP 50-54	n	4,00	5010102	Ø PE 50
76	70	CLAMP GOLD 63-68	n	4,00	5500122	Ø PE 63
77	70	DRUM	n	1,00	5400002	

CONTINUA

Note

Esploso I0540EGXA
MACCHINA IRRIGATRICE SUPER RAIN 540 GX EXPORT

Note

POS. Pos. Pos. Pos.	PAG. Page Seite Pagina	DENOMINAZIONE Appellation Denomination Bezeichnung Denombrocion	U.M.	N.PEZZI N.Pieces N.Pieces N.Teile N.Plez	CODICE Code Code Code Codigo	NOTE Annotation Note Aufzeichnung Nota
78	70	PROTECTION FOR TOOTHED GEAR	n	1,00	5400045Z	
79	70	OR 2175	n	1,00	5400125	
80	70	BUSH D.46X50	n	1,00	5400046	
81	70	WHEEL SUPPORT MOD.540	n	1,00	5400003	
82	70	BEARING 6210 RS1	n	1,00	5400112	
83	70	SEEGER E 50	n	1,00	7000109	
84	70	UM 50X70X10 SEAL	n	1,00	5400114	
85	70	OR 4300	n	1,00	5400111	
86	70	SUPPORTING PIPE	n	1,00	5400026Z	
87	70	HOSE OSLO 10 51X57	m	0,31	5400116	
88	70	STOP TOOTH	n	1,00	5400047Z	
89	70	HOSEGUIDE FORK	n	1,00	5400037Z	
90	70	CAST IRON HOSEGUIDE	n	1,00	4000019Z	
91	70	PAWL SERIE 400	n	1,00	4000018	
92	70	SEEGER I 30	n	1,00	4000113	
93	70	M8 GREASER	n	2,00	5800174	
94	70	PINION 3/8" Z 19	n	1,00	4000010	Z...
95	70	CHAIN TIE	n	1,00	4000006Z	
96	70	RIGHT M6 GREASER	n	1,00	5800112	
97	70	ENDLESS SCREW	n	1,00	5400005	
98	70	PE HOSE JOINT	n	1,00	5400052	F.54056
98	70	PE HOSE TAIL	n	1,00	5401052Z	
99	70	SUPPORT FOOT FOR TROLL.LIFTING	n	1,00	5400035	F.54057
99	70	TROLLEY LIFTING SUPPORT	n	1,00	5401035	
100	70	SPEED COMPENSATOR DEVICE	n	1,00	5400025	F.54056
100	70	SPEED COMPENSATOR CHASSIS	n	1,00	5401025Z	D.54057
101	70	GALVAN.SPRING	n	1,00	3000017	

CONTINUA

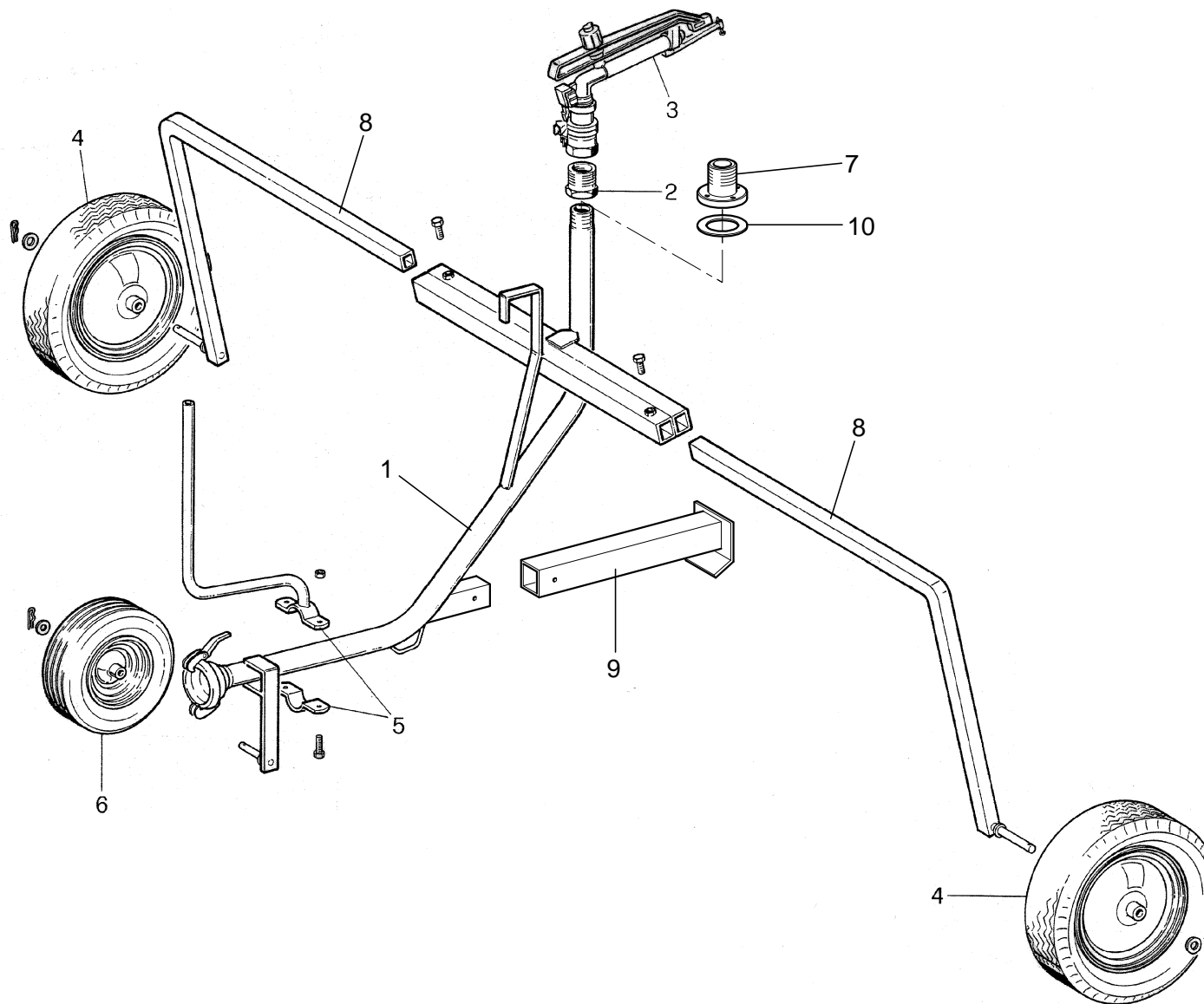
Note

Esploso I0540EGXA
MACCHINA IRRIGATRICE SUPER RAIN 540 GX EXPORT

Note

POS. Pos. Pos. Pos.	PAG. Page Seite Pagina	DENOMINAZIONE Appellation Denomination Bezeichnung Denombrocion	U.M.	N.PEZZI N.Pieces N.Pieces N.Teile N.Plez	CODICE Code Code Kode Codigo	NOTE Annotation Note Aufzeichnung Nota
102	70	TROLLEY LIFTING FRAME	n	1,00	5400033	F.54056
102	70	TROLLEY LIFTING CHASSIS	n	1,00	5401033Z	D.54057
103	70	TROLLEY LIFTING HORNS	n	1,00	5400034	F.54056
103	70	STOP CHASSIS	n	1,00	5401034Z	D.54057
104	70	BY-PASS BAR	n	1,00	5400039Z	
105	70	FIXING FOR BY-PASS TIE	n	1,00	5800058Z	F.54040-D.54057
106	70	ASTA MARCIA-ARRESTO	n	1,00	5401038Z-5400008	D.54057
106	70	ASTA MARCIA-ARRESTO	n	1,00	5400038+5400008	F.54056
107	70	FIXING FOR BY-PASS KNOB	n	1,00	5800030Z	F.54056
108	70	D.10 KNOB	n	1,00	5400129	D.54057
108	70	KNOB INT.10X25	n	1,00	5800109	F.54056
109	70	REAR LEG	n	2,00	5400028Z	
110	70	PIN COOP 03 AMA	n	2,00	COOP03AMA	
111	70	PIN FOR TROLLEY ADJUSTING D.14	n	2,00	5800042Z	
112	70	RELEASE CABLE WITH TIE	n	1,00	5500025	D.54057
113	70	SPRING FOR VALVE KIT	n	1,00	5500040	D.54057
114	70	HOLDAFST FOR CABLE D.4	n	1,00	5500131	D.54057
115	70	TURBINE T1-540	n	1,00	TUR540	
115	70	+26-27-28-29-30-31-32-33-34-35-36-37-38				

Note



RM S.p.A.
 S. QUIRICO DI TRECASALI
 (PARMA)-ITALIA

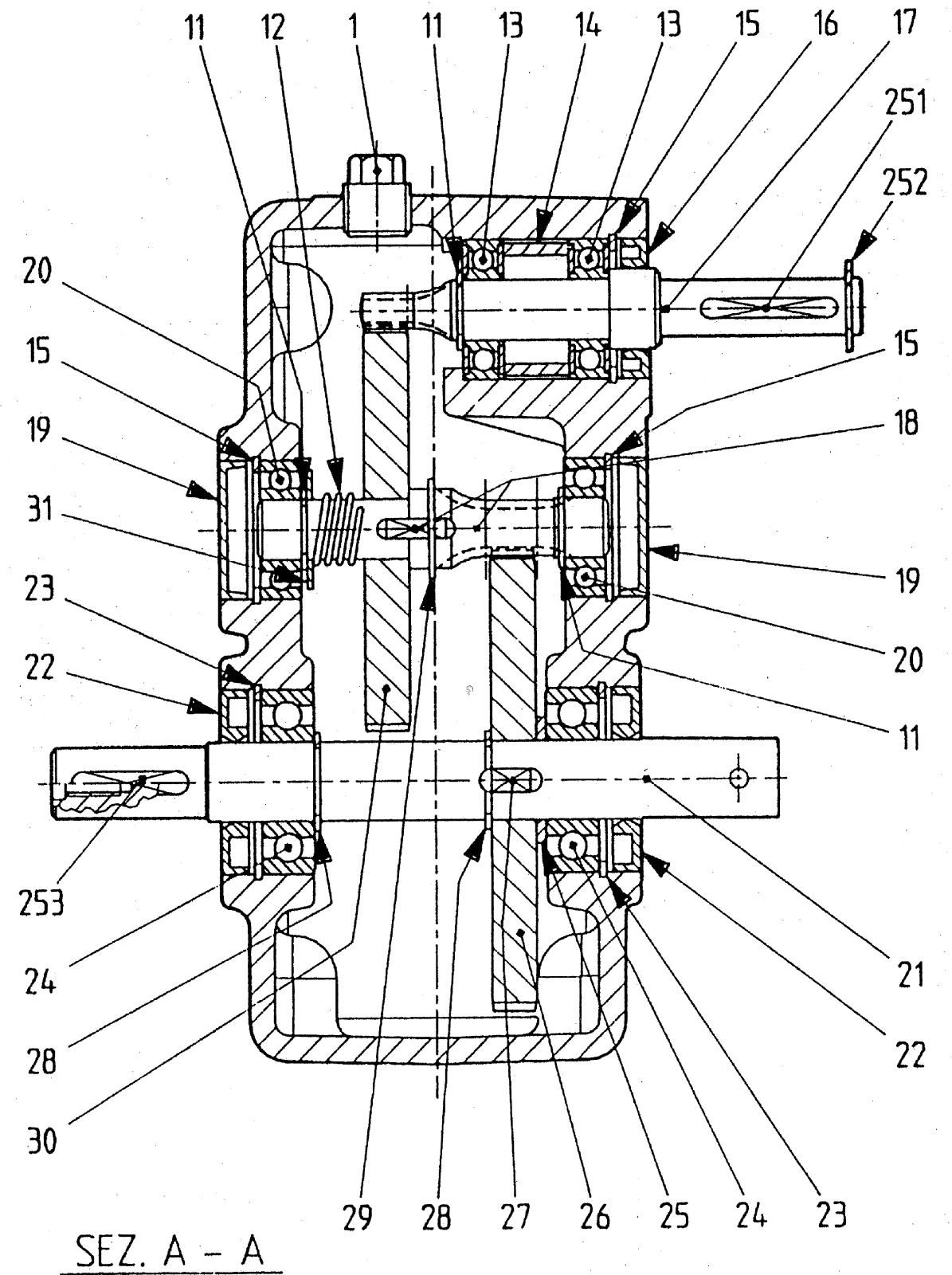
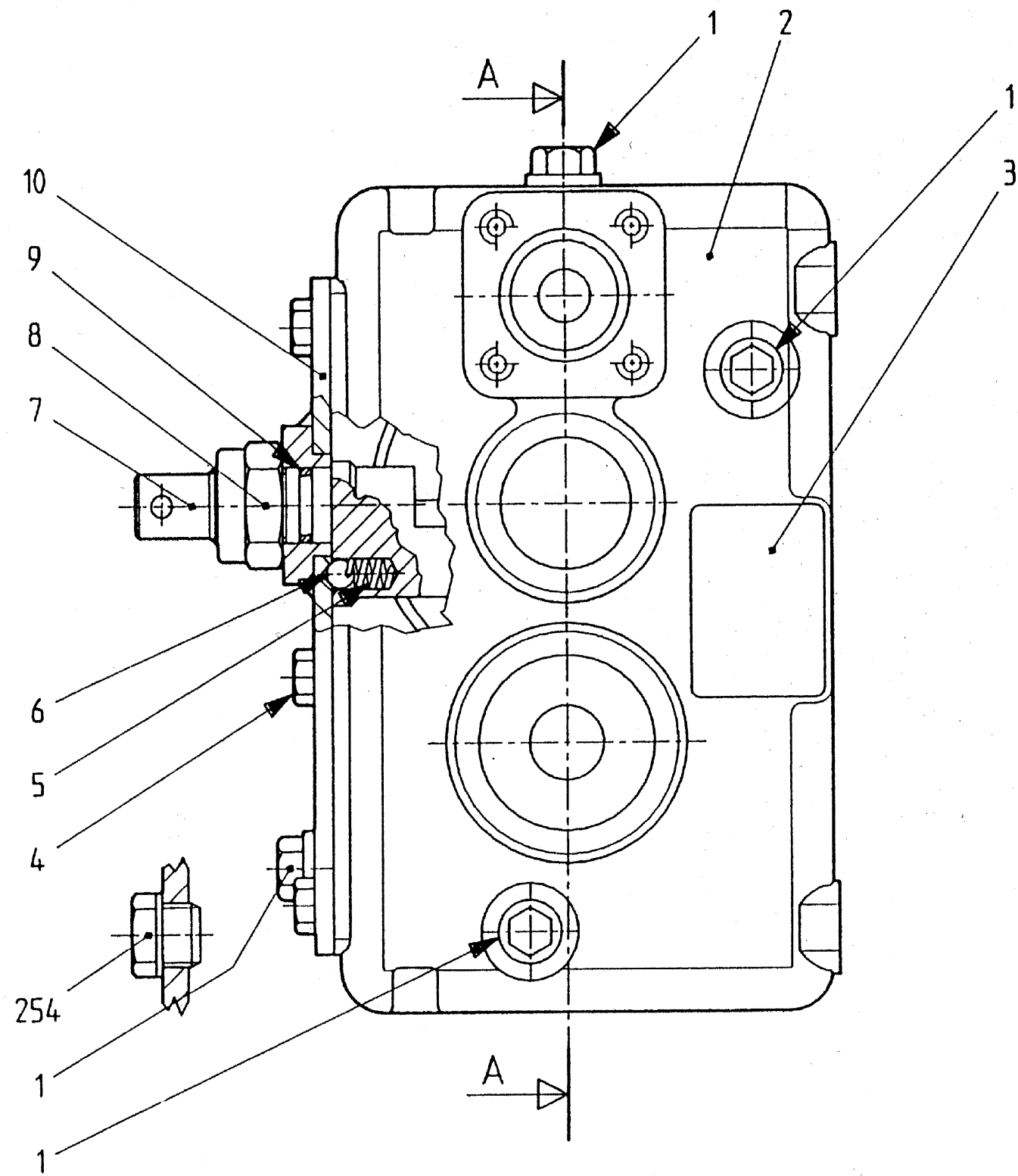
CARRELLO PORTA IRRIGATORE MOD. 540 GX
SPRINKLER-HOLDING CARRIER MODEL 540 GX
CHARIOT PORT-IRRIGATEUR MODÈLE 540 GX
WAGEN FÜR BEWÄSSERUNGSAPPARAT MOD. 540 GX
RIJDEND ONDERSTEL VOOR SPROEIER TYPE 540 GX

Esploso CARR540
CARRELLO 540

Note

POS. Pos. Pos. Pos.	PAG. Page Seite Pagina	DENOMINAZIONE Appellation Denomination Bezeichnung Denombrocion	U.M.	N.PEZZI N.Pieces N.Pieces N.Teile N.Plez	CODICE Code Code Kode Codigo	NOTE Annotation Note Aufzeichnung Nota
1	33	540 TROLLEY CENTRAL BODY	n	1,00	54000361Z	
2	33	ADAPTATION 2"M-1"1/2 F	n	1,00	5400119	Ø PE 63
3	33	GUN SIME SENIOR	n	1,00	GETSENIOR	Ø PE 63
3	33	GUN SIME HIDRA	n	1,00	GETSIMEHIDRA	Ø PE 50
4	33	WHEEL 4.80/4.00-80 + BEAR.D.25	n	2,00	4000104	
5	33	STOP BAR	n	1,00	5400050	F.54056
6	33	WHEEL 13X5.00-6 4PR	n	1,00	5400118	
7	33	1"1/2 HOSE TAIL	n	1,00	54000362Z	
8	33	540 TROLLEY LEG	n	2,00	54000364Z	
9	33	540 TROLLEY DRAWBAR	n	1,00	54000363Z	
10	33	PAPER SEAL	n	2,00	5400128	
11	33	TROLLEY CARPENTRY	n	1,00	5400036	
11	33	POS.1-5-7-8-9				

Note



Cod. 5400101

RM S.p.A.
S. QUIRICO DI TRECASALI
(PARMA)-ITALIA

RIDUTTORE D741A PER 540GX rif.741.000.10
D741A REDUCER FOR 540GX ref.741.000.10
REDUCTEUR D741A POUR 540GX réf.741.000.10
UNTERSETZER D741A FÜR 540GX bez.741.000.10
GEAR D741A VOOR 540GX ref.741.000.10

Pag.20

Rev.00

11/2010

Esploso 5400101
RIDUTTORE COMER D-741A
COD.9.741.000.20

Note

POS. Pos. Pos. Pos.	PAG. Page Seite Pagina	DENOMINAZIONE Appellation Denomination Bezeichnung Denombrocion	U.M.	N.PEZZI N.Pieces N.Pieces N.Teile N.Plez	CODICE Code Code Kode Codigo	NOTE Annotation Note Aufzeichnung Nota
1	20	COMER PLUG	n	4,00	RC86500006	
2	20	COMER BOX	n	1,00	RC0741030000	
3	20	PLATE COMER	n	1,00	RC0124710100	
4	20	SCREW ZN TE UNI5739 COMER	n	6,00	RC81101676	
5	20	COMER SPRING	n	1,00	RC0721710100	
6	20	COMER BALL	n	1,00	RC85900166	
7	20	LEVER I.D. COMER	n	1,00	RC0741700000	
8	20	COMER NUT	n	1,00	RC82600740	
9	20	SEAL O-RING COMER	n	1,00	RC87600191	
10	20	COMER COVER	n	1,00	RC2741130100	
11	20	COMER RING	n	3,00	RC85100286	
12	20	COMER SPRING	n	1,00	RC0741710200	
13	20	BEARING CLB 6202 2RS COMER	n	2,00	RC80101303	
14	20	SPACER COMER	n	1,00	RC0741710100	
15	20	COMER RING	n	3,00	RC85201265	
16	20	COMER RING	n	1,00	RC87301744	
17	20	COMER PINION SHAFT	n	1,00	RC0741500000	
18	20	PINION SHAFT + TONGUE COMER	n	1,00	RC2741500200	
19	20	COMER PLUG	n	2,00	RC87001253	
20	20	BEARING CLB 6202 COMER	n	2,00	RC80101160	
21	20	COMER OUTLET SHAFT	n	1,00	RC0741310000	
22	20	COMER BA RING	n	2,00	RC87301395	
23	20	COMER RING	n	2,00	RC85201290	
24	20	BEARING CLB 6204 COMER	n	2,00	RC80100405	
25	20	SPACER 32.0X20 COMER	n	1,00	RC0104752500	
26	20	GEAR COMER	n	1,00	RC0741600100	
27	20	COMER TONGUE	n	1,00	RC84101743	

CONTINUA

Note

RM SPA
 Via Provinciale per Cremona 41 - Fraz. San Quirico
 43010 Trecasali (PR)
 Tel 0521 872221 - Fax 0521 874027
 Cod. Fisc e Part.IVA 00153210349

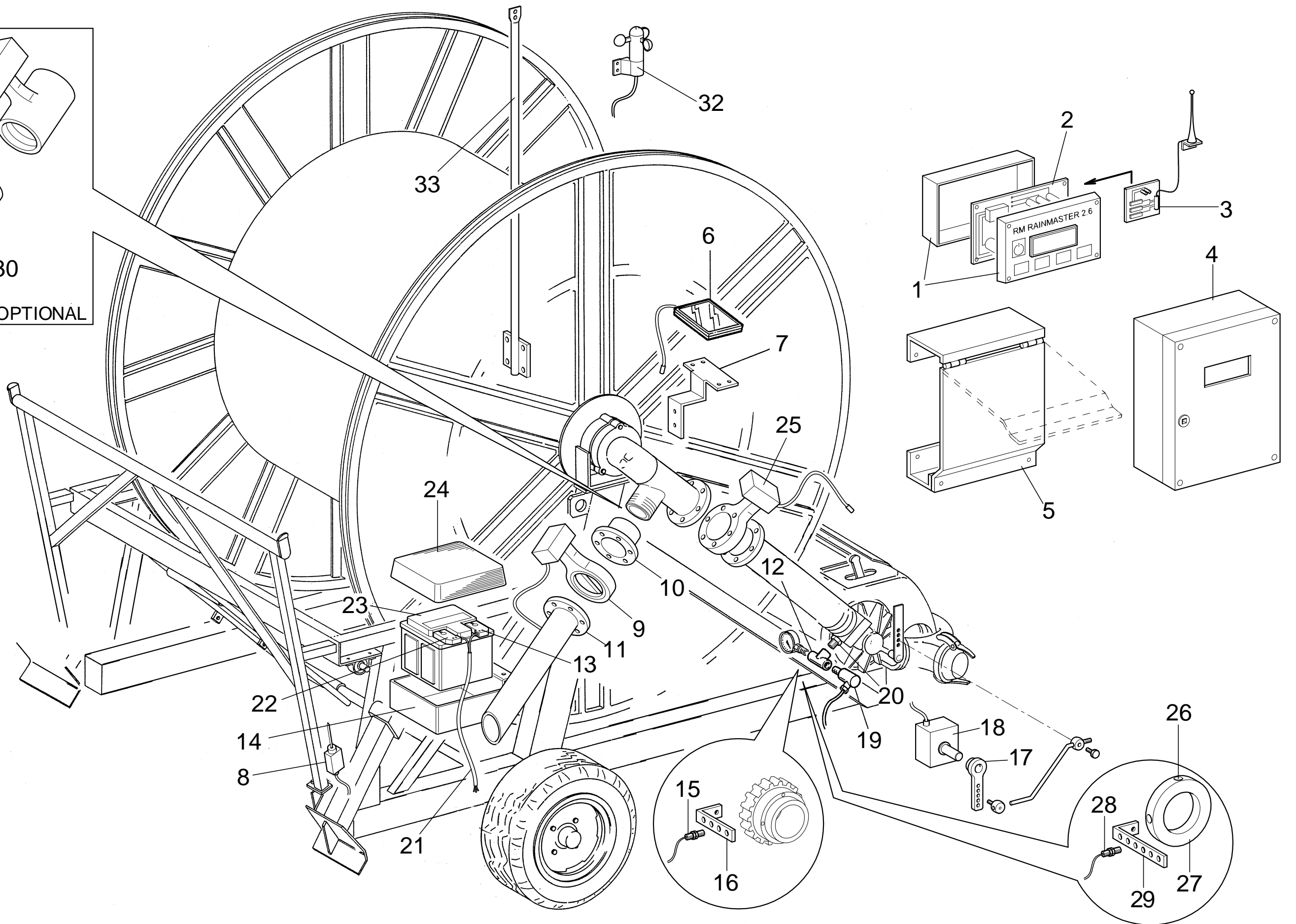
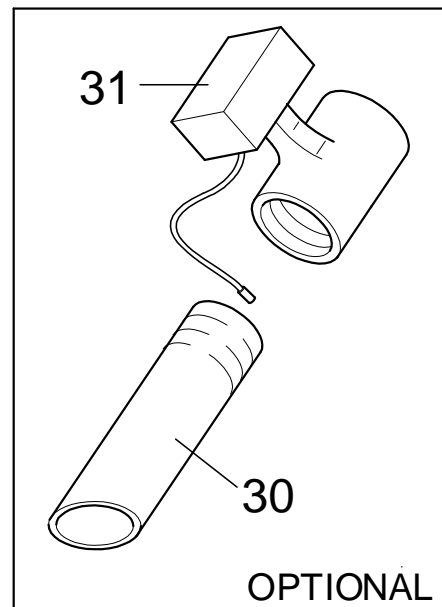
Controllo Esploso 11/0000009
 Data Creazione 28/01/2011
 Data Ult. Modifica 30/09/2011 Ora 12:10

Stampa del 01/12/2011

Esploso 5400101
RIDUTTORE COMER D-741A
COD.9.741.000.20

POS. Pos. Pos. Pos.	PAG. Page Seite Pagina	DENOMINAZIONE Appellation Denomination Bezeichnung Denombrocion	U.M.	N.PEZZI N.Pieces N.Pieces N.Teile N.Plez	CODICE Code Code Kode Codigo	NOTE Annotation Note Aufzeichnung Nota
28	20	COMER RING	n	2,00	RC85100261	
29	20	COMER RING	n	1,00	RC85301814	
30	20	GEAR I.D. COMER	n	1,00	RC0741600000	
31	20	SPACER COMER	n	1,00	RC0782751500	
251	20	TONGUE UNI6604 COMER	n	1,00	RC84101585	
252	20	COMER RING	n	1,00	RC85100886	
253	20	TONGUE UNI 6604 COMER	n	1,00	RC84100251	
254	20	COMER GAUGE	n	1,00	RC86400673	

Note



RM S.p.A.
S. QUIRICO DI TRECASALI
(PARMA)-ITALIA

PROGRAMMATORE RM RAINMASTER 2.6/RAINSTAR 160
PROGRAMMER RM RAINMASTER 2.6/RAINSTAR 160
PROGRAMMEUR RM RAINMASTER 2.6/RAINSTAR 160
PROGRAMMIEREINHEIT RM RAINMASTER 2.6/RAINSTAR 160
PROGRAMMEUR RM RAINMASTER 2.6/RAINSTAR 160

Pag.110

Rev.01
11/2010

Esploso

PROGRAMMATORE RAINMASTER 2.6 - RAINSTAR 160

Note

POS. Pos. Pos. Pos.	PAG. Page Seite Pagina	DENOMINAZIONE Appellation Denomination Bezeichnung Denombrocion	U.M.	N.PEZZI N.Pieces N.Pieces N.Teile N.Plez	CODICE Code Code Kode Codigo	NOTE Annotation Note Aufzeichnung Nota
1	110	RAINSTAR STAINL.STEEL COVER	n	1,00	0200127	C.2
2	110	RAINSTAR 260 CONTROL PANEL	n	1,00	0200128	C.1
2	110	RAINSTAR 160 CONTROL PANEL	n	1,00	0200123	C.1
3	110	GSM ELECTR. BOARD WITH ANTENNA	n	1,00	0200130	OP
4	110	COVER WITH KEY FOR PROGRAMMER	n	1,00	7000074	OP
5	110	RAINSTAR STAINL.STEEL COVER	n	1,00	0200127	
6	110	SOLAR PANEL 20902076	n	1,00	5800332	OP
7	110	SOLAR PANEL SUPPORT	n	1,00	7000082Z	OP
8	110	FINECORS A STELO + BOCCHETTONE	n	1,00	5810109+5810110	
9	110	MOTORISED VALVE 3" DN80	n	1,00	0200135	
9	110	MOTOR VALVE 20 SEC. STARTEC	n	1,00	0200129	
10	110	FLANGIA DN 100 CON MANICOTTO FILETTATO	n	1,00	FLANGEDN100C+MA NFIL89	OP
10	110	FLANGIA DN80 CON MANFIL 3"	n	1,00		C.11-OP
11	110	FLANGE DN 100 PN16 HOLE D.108	n	1,00	FLANGEDN100C	
11	110	FLANGED DISCHARGE PIPE FOR VALVE	n	1,00	0200043Z	C.10 - OP
12	110	T 1/8" F+F+F JOINT	n	1,00	5800327	
13	110	"+" BATTERY HOLDFAST	n	1,00	5800324	
14	110	BATTERY CONTAINER	n	1,00	7000081	
15	110	SPECIAL SENSOR 8 MM.	n	1,00	0200124	C.16 SOLO/ONLY POST-MONTAGGIO
16	110	SUPPORTO SENSORE	n	1,00		C.15 SOLO/ONLY POST-MONTAGGIO
17	110	GALVANISED BY-PASS LEVER	n	1,00	0200003Z	
18	110	MOTOGERABOX 12 VPC STARTEC	n	1,00	0200125	
19	110	PRESSURE SWITCH 1/4" STARTEC	n	1,00	0200126	
20	110	JOINT 1/8"-1/8"	n	1,00	5800328	
21	110	FEEDING CABLE	n	1,00	5800321	
22	110	"-" BATTERY HOLDFAST	n	1,00	5800325	
23	110	BATTERY 12V 45 AH	n	1,00	5800326	

CONTINUA

Note

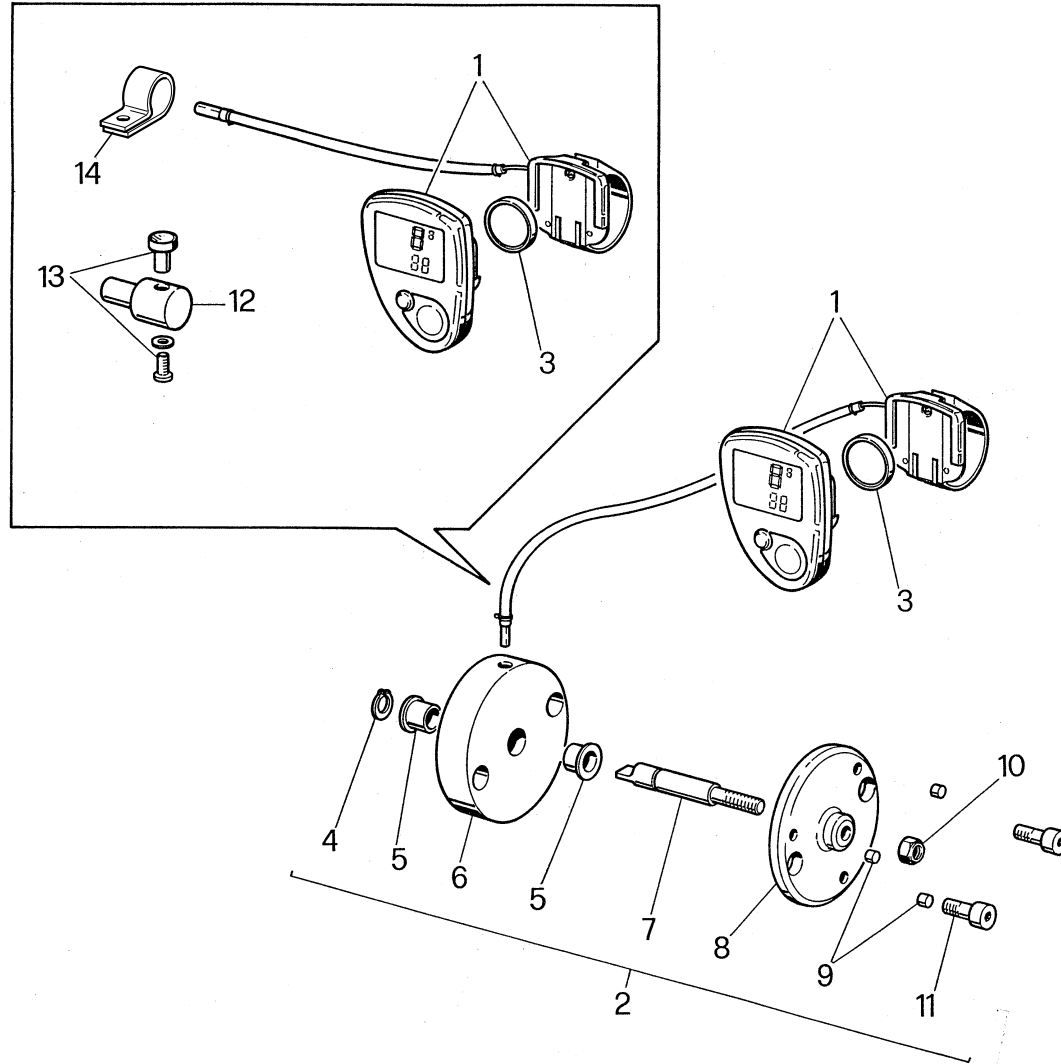
Esploso

PROGRAMMATORE RAINMASTER 2.6 - RAINSTAR 160

Note

POS. Pos. Pos. Pos.	PAG. Page Page Seite Pagina	DENOMINAZIONE Appellation Denomination Bezeichnung Denombrocion	U.M.	N.PEZZI N.Pieces N.Pieces N.Teile N.Plez	CODICE Code Code Kode Codigo	NOTE Annotation Note Aufzeichnung Nota
24	110	BATTERY COVER	n	1,00	8900049	
25	110	MOTOR VALVE 20 SEC. STARTEC	n	1,00	0200129	OP
26	110	MAGNET DIAM. 4 X 3	n	4,00	5800505	
27	110	DISK FOR GEAR Ø90X10MM	n	1,00	0200103	
28	110	RUN END SENSOR WITH MAGNET	n	1,00	5800329	C.29
29	110	SUPPORTO SENSORE	n	1,00		C.28
30	110	2" DISCHARGE PIPE	n	1,00	0200044Z	2"- OP
31	110	MOTORISED BALL VALVE 20 SEC.	n	1,00	0200132	OP
32	110	SUPPORTO ANEMOMETRO	n	1,00		OP
33	110	ANEMOMETER WITH CABLE	n	1,00	0200137	op

Note



RM S.p.A.
 S. QUIRICO DI TRECASALI
 (PARMA)-ITALIA

TACHIMETRO ELETTRONICO "VDO EURO/SPRINT"
ELECTRONIC SPEEDOMETER "VDO EURO/SPRINT"
TACHYMÈTRE ÉLECTRONIQUE "VDO EURO/SPRINT"
ELEKTRONENGESCHWINDIGKEITSMESSER "VDO EURO/SPRINT"
ELEKTRONISCH TOERENTELLER "VDO EURO/SPRINT"

Esploso

TACHIMETRO VDO EURO/SPRINT

Note

POS. Pos. Pos. Pos.	PAG. Page Seite Pagina	DENOMINAZIONE Appellation Denomination Bezeichnung Denombrocion	U.M.	N.PEZZI N.Pieces N.Pieces N.Teile N.Plez	CODICE Code Code Kode Codigo	NOTE Annotation Note Aufzeichnung Nota
1	22	TACHOMETER CYTEC 05	n	1,00	5800501	C.3+13
2	22	SPEED READER FOR TACHOMETER	n	1,00	5800508	
3	22	WASHER 4 X 10 X 1	n	1,00	5800504	
4	22	SEEGER E 8	n	1,00	5800503	
5	22	BUSH PAF 08075P10	n	2,00	5800502	
6	22	TACHOMETER SENSOR HOLDER	n	1,00	5800052	
7	22	TACHOMETER READER SHAFT	n	1,00	5800054	
8	22	TACHOMETER MAGNETS HOLDER	n	1,00	5800053	
9	22	MAGNET DIAM. 4 X 3	n	3,00	5800505	
10	22	SELF-LOC.NUT M5	n	1,00	5800211	
11	22	VITI TCEI M5x12	n	2,00		
12	22	MAGNET HOLDER	n	1,00	8900034	
13	22	MAGNETE VDO	n	1,00		C.1
14	22	CLAMP ABA D.10	n	1,00	5800507	
15	22	TACHOMETER VDO COMPLETE	n	1,00	TACHVDOEURO	
15	22	MAGNETI - POS.1-2-3				
16	22	TACHOMETER VDO (560-890-990)	n	1,00	TACHVDOSPRINT	
16	22	MAGNETE - POS.1-3-12-13-14				

Note