



# M76

POSIZIONAMENTO  
E TENUTA SENZA COLLANTI  
ADJUST NOZZLE POSITION  
AND SEAL WITHOUT BONDING



76.617.32  
76.617.32 15



76.617.31  
76.617.31 15



76.617.36  
76.617.36 15



**G1/4M.-1/4\"/>**



76.617.37  
76.617.40



76.617.69



**Kit ghiera AD/AC  
AD/AC cap kit**



256.605.7  
G3/8F. - 3/8\"/>



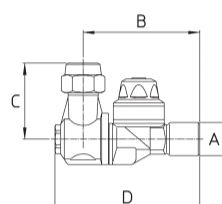
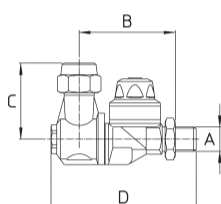
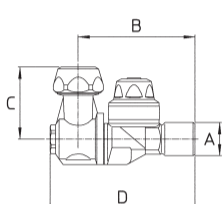
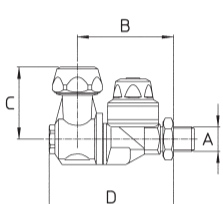
73.605.68  
11/16-16 UN



73.605.27  
G3/8F. - 3/8\"/>



75.605.46 Ø15  
75.605.47 Ø18



◀ PAGE 07/47 ▶

**Versioni standard:**  
Ø18 e Ø15 complete di ghiera - ugello non compreso  
G3/8 e 11/16-16UN complete di ghiera - ugello non compreso- opzioni con filtro

Pressione di esercizio max.: 40 bar  
Peso: G1/4M. 230 g - G1/4F. 230 g - G3/8M. 245 g - 1/4\"/>

**Materiali:** ottone - acciaio inox - NBR - FPM - PVC  
**Impiego:** su atomizzatori. Due posizioni "APERTO" inclinate 15° dalla verticale. Ogni posizione è segnalata da uno scatto. Antigoccia resistente ed efficace a bassa e ad alta pressione.

**Standard models:**  
Ø18 and Ø15 models with cap - spray tip not included  
3/8\"/>

Max. operating pressure.: 40 bar (580 psi)  
Weight: 1/4\"/>

**Materials:** brass - stainless steel - Buna N - FKM - PVC  
**Use:** for agriculture use on air blast sprayers. Two "OPEN" positions at ±15° from vertical. A click point out each position. Check valve with efficient and long lasting operations at low and high pressures.

## COME SI ORDINA / HOW TO ORDER

CODICE code	GHIERA cap	PER UGELLI for spray tips	FILTRO strainer	A	B mm	C mm	D mm		KIT RICAMBIO spare parts kit						
76.617.29	G3/8F. - HEX.20	Ø15 KIT	X			38	10								
76.617.29 A	G3/8F. - HEX.20	Ø15 KIT	-												
76.617.29 B	G3/8F. ALETTATA 3/8\"/>	Ø15 KIT	-												
76.617.29 C	G3/8F. ALETTATA 3/8\"/>	Ø15 KIT	X												
76.617.30	11/16 16UN - HEX.21	Ø15 KIT disc+core	X												
76.617.30 A	11/16 16UN - HEX.21	Ø15 KIT disc+core	-							G1/4M. 1/4\"/>	51	40	66	-	75.302.28
76.617.30 B	11/16 16UN ALETTATA 1 1/16 16UN WINGED	Ø15 KIT disc+core	-							40	-	-	-	-	-
76.617.30 C	11/16 16UN ALETTATA 1 1/16 16UN WINGED	Ø15 KIT disc+core	X							40	-	-	-	-	-
76.617.32	Ø18 - HEX.24	Ø18 KIT	-							38	10	10	10		
76.617.32 D	AD/AC	AD/AC	-							38	10	10	10		
76.617.32 15	Ø15 - HEX.24	ATR/TVI	-	38	10	10	10								
<b>FPM/FKM</b> 76.617.69	SENZA GHIERA - NO CAP 11/16 16UN	Ø15 KIT disc+core	-	G1/4M. 1/4\"/>	51	33	66	-	90.302.59						
76.617.36	Ø18 - HEX.24	Ø18 KIT	-	G3/8M.-G1/8F. 3/8\"/>	51	38	66	10	75.302.28						
76.617.36 D	AD/AC	AD/AC	-												
76.617.36 15	Ø15 - HEX.24	ATR/TVI	-												
76.617.31	Ø18 - HEX.24	Ø18 KIT	-			38	10	75.302.28							
76.617.31 D	AD/AC	AD/AC	-												
76.617.31 15	Ø15 - HEX.24	ATR/TVI	-												
76.617.37	1/16 16UN - HEX.21	Ø15 KIT disc+core	X												
76.617.37 A	11/16 16UN - HEX.21	Ø15 KIT disc+core	-						G1/4F. 1/4\"/>	62	40	77	-	-	
76.617.37 B	11/16 16UN ALETTATA 1 1/16 16UN WINGED	Ø15 KIT disc+core	-	40	-	-	-	-	-						
76.617.37 C	11/16 16UN ALETTATA 1 1/16 16UN WINGED	Ø15 KIT disc+core	X	40	-	-	-	-	-						
76.617.40	1/16 16UN - HEX.21	Ø15 KIT disc+core	X	1/4\"/>	62	40	77	10	75.302.28						
76.617.40 A	1/16 16UN - HEX.21	Ø15 KIT disc+core	-												
76.617.40 B	11/16 16UN ALETTATA 1 1/16 16UN WINGED	Ø15 KIT disc+core	-												
76.617.40 C	11/16 16UN ALETTATA 1 1/16 16UN WINGED	Ø15 KIT disc+core	X												
76.617.71	Ø15 - HEX.24	ATR/TVI	-	R1/4M.	51	38	73	-	75.302.28						



GETTI  
NOZZLES



UGELLI  
SPRAY TIPS



CATALOGHI  
CATALOGUES



RICAMBI  
SPARE PARTS :

76.617.29  
76.617.30  
76.617.31

76.617.31 15  
76.617.32  
76.617.32 15

76.617.36  
76.617.36 15  
76.617.37

76.617.40