



M74

POSIZIONAMENTO
E TENUTA SENZA COLLANTI
ADJUST NOZZLE POSITION
AND SEAL WITHOUT BONDING



74.610.109
74.610.109 15



74.610.111
74.610.111 15



74.610.115



G1/4M.-1/4"BSPPM
Dado con O Ring
Nut with O Ring



74.610.118



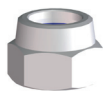
74.610.116



74.610.108



74.610.19



256.605.7
G3/8F. - 3/8"BSPPF.



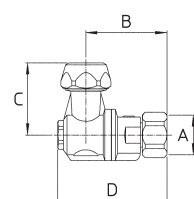
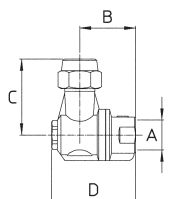
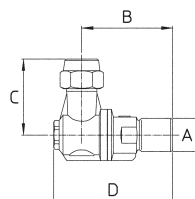
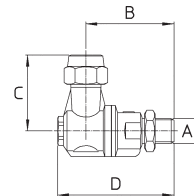
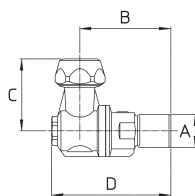
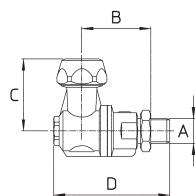
73.605.68
11/16-16 UN



73.605.27
G3/8F. - 3/8"BSPPF.
73.605.28
11/16-16 UN



75.605.46 Ø15
75.605.47 Ø18



Standard: versioni Ø18 e Ø15 complete di ghiera - ugello non compreso
versioni G3/8 e 11/16-16UN complete di ghiera - ugello non compreso - opzioni con filtro

Pressione di esercizio max.: 40 bar
Peso: G1/4M. 160 g - G1/4F. 160 g - 1/4"NPTF. 135 g

Materiali: ottone - acciaio inox - NBR - PVC

Impiego: su atomizzatori. Due posizioni "APERTO" inclinate 15° dalla verticale. Ogni posizione è segnalata da uno scatto.

Standard: Ø18 and Ø15 models with cap - spray tip not included
3/8"BSPP and 11/16-16UN models with cap - spray tip not included - options with strainer

Max. operating pressure.: 40 bar (580 psi)


Weight: 1/4"BSPPM. 160 g (5.5 oz) - 1/4"BSPPF. 160 g (5.5 oz) - 1/4"NPTF. 135 g (4.5 oz)

Materials: brass - stainless steel - Buna N - PVC

Use: on air blast sprayers. Two "OPEN" positions at ±15° from vertical. A click point out each position.

M74

COME SI ORDINA / HOW TO ORDER

CODICE code	GHIERA cap	PER UGELLI for spray tips	FILTRO strainer	A	B mm	C mm	D mm		KIT RICAMBIO spare parts kit
74.610.109 74.610.109 15	Ø18 - HEX.24 Ø15 - HEX.24	Ø18 KIT ATR/TVI	-	G1/4M. 1/4"BSPM.	37	38	52	10	70.302.27
74.610.111 74.610.111 15	Ø18 - HEX.24 Ø15 - HEX.24	Ø18 KIT ATR/TVI	-	G1/4F. 1/4"BSPF.	48	38	63	10	70.302.27
74.610.115 74.610.115 A 74.610.115 B 74.610.115 C	G3/8F. - HEX.20 G3/8F. - HEX.20 G3/8F. ALETTATA 3/8"BSPF. WINGED G3/8F. ALETTATA 3/8"BSPF. WINGED	Ø15 KIT Ø15 KIT Ø15 KIT Ø15 KIT	X - - X	G1/4M. 1/4"BSPM.	37	40	52	10	70.302.27
74.610.108 74.610.108 A 74.610.108 B 74.610.108 C	G3/8F. - HEX.20 G3/8F. - HEX.20 G3/8F. ALETTATA 3/8"BSPF. WINGED G3/8F. ALETTATA 3/8"BSPF. WINGED	Ø15 KIT Ø15 KIT Ø15 KIT Ø15 KIT	X - - X	G1/4F. 1/4"BSPF.	48	40	63	10	70.302.27
74.610.118 74.610.118 A 74.610.118 B 74.610.118 C	11/16 16UN - HEX.21 11/16 16UN - HEX.21 11/16 16UN ALETTATA WINGED 11/16 16UN ALETTATA WINGED	Ø15 KIT disc+core Ø15 KIT disc+core Ø15 KIT disc+core Ø15 KIT disc+core	X - - X	G1/4M. 1/4"BSPM.	37	40	52	10	70.302.27
74.610.116 74.610.116 A 74.610.116 B 74.610.116 C	11/16 16UN - HEX.21 11/16 16UN - HEX.21 11/16 16UN ALETTATA WINGED 11/16 16UN ALETTATA WINGED	Ø15 KIT disc+core Ø15 KIT disc+core Ø15 KIT disc+core Ø15 KIT disc+core	X - - X	1/4NPTF.	30	40	45	10	70.302.27
74.610.19	Ø15 - HEX.24	ATR/TVI	-	M18x1.5F. - Ø9	42	38	57	50	70.302.27

