



TYPE "B" SINGLE STAGE CENTRIFUGAL PUMP Electric Motor Drive

| | |
|-------------------|-----------------|
| Section | CC |
| Page | 370.1 |
| Date | January 1, 2004 |
| Supersedes 6/1/95 | |

CAST IRON IMPELLER

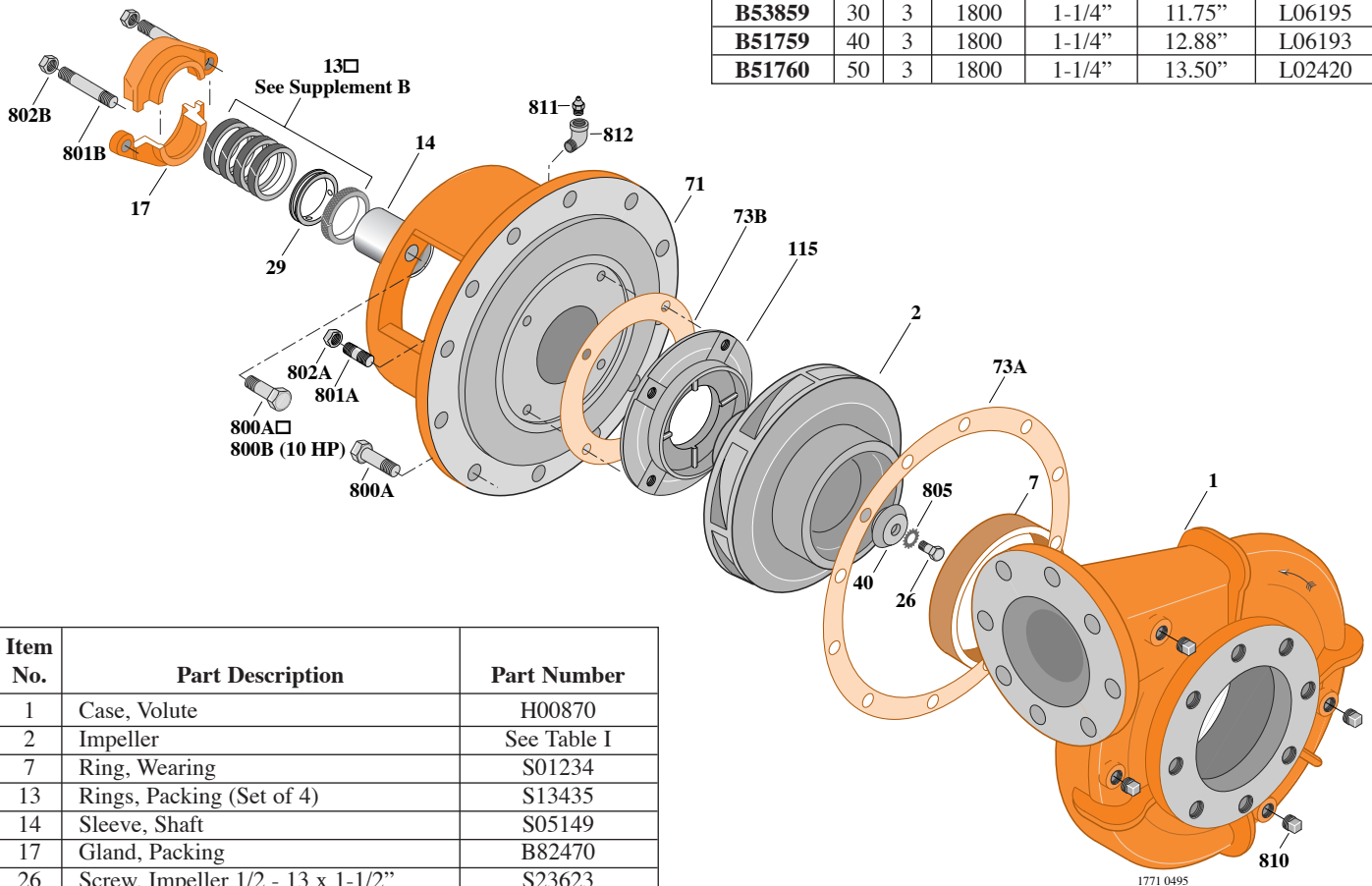
B6JPBL

Flanged Case

Packing Construction

TABLE I

| B/M No. | HP | PH | RPM | "U" Dim. | Imp. Dia. | Imp. No. |
|---------------|----|----|------|----------|-----------|----------|
| B53858 | 25 | 3 | 1800 | 1-1/4" | 11.00" | L06194 |
| B53859 | 30 | 3 | 1800 | 1-1/4" | 11.75" | L06195 |
| B51759 | 40 | 3 | 1800 | 1-1/4" | 12.88" | L06193 |
| B51760 | 50 | 3 | 1800 | 1-1/4" | 13.50" | L02420 |



| Item No. | Part Description | Part Number |
|----------|---------------------------------------|--------------|
| 1 | Case, Volute | H00870 |
| 2 | Impeller | See Table I |
| 7 | Ring, Wearing | S01234 |
| 13 | Rings, Packing (Set of 4) | S13435 |
| 14 | Sleeve, Shaft | S05149 |
| 17 | Gland, Packing | B82470 |
| 26 | Screw, Impeller 1/2 - 13 x 1-1/2" | S23623 |
| 29 | Ring, Lantern | S19200 |
| 32 | Key, 1/4 x 2-1/4" (See Note) | S23677 |
| 40 | Deflector | S06319 |
| 71 | Bracket | See Table II |
| 73A | Gasket, Volute | S06271 |
| 73B | Gasket, Balance Ring | S09943 |
| 115 | Ring, Balance | S12315 |
| 800 | Capscrew, 5/8 - 11 x 1-1/2" (16 Req.) | S26999 |
| 801A | Stud, 3/8 - 16 x 1-3/4" (4 Req.) | S23996 |
| 801B | Stud, 3/8 - 16 x 2-1/2" (2 Req.) | S04438 |
| 802A | Nut, Hex 3/8 - 16 (4 Req.) | S23103 |
| 802B | Nut, Hex 3/8 - 16 (2 Req.) | S23343 |
| 805 | Washer, Lock | S23038 |
| 810 | Plug, Pipe 1/2 NPT (4 Req.) | S23717 |
| 811 | Fitting, Grease | S23700 |
| 812 | Elbow, Street | S25421 |

TABLE II

| HP | PH | Bracket No. | "AK" Fit | "U" Dim. | Motor Frame |
|----|----|-------------|----------|----------|-------------|
| 25 | 3 | H01601 | 12-1/2" | 1-1/4" | 284JP |
| 30 | 3 | H01601 | 12-1/2" | 1-1/4" | 286JP |
| 40 | 3 | H01601 | 12-1/2" | 1-1/4" | 324JP |
| 50 | 3 | H01601 | 12-1/2" | 1-1/4" | 326JP |

NOTE: For an explanation of the tabulated material found on this page and for impeller key location, refer to *Supplement A* located at the beginning of this section.



TYPE "B" SINGLE STAGE CENTRIFUGAL PUMP Electric Motor Drive

| | |
|-------------------|-----------------|
| Section | CC |
| Page | 370.2 |
| Date | January 1, 2004 |
| Supersedes 6/1/95 | |

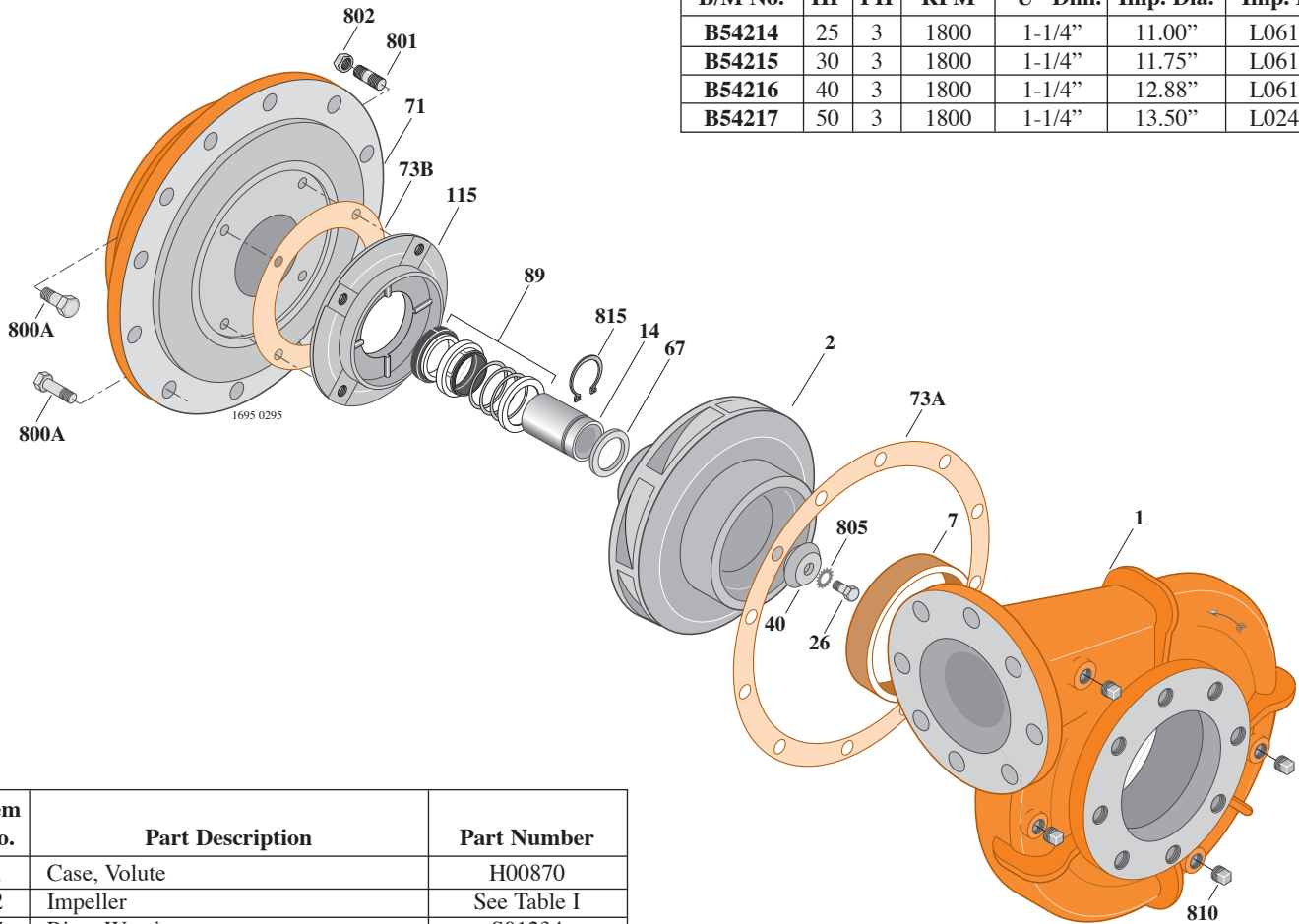
CAST IRON IMPELLERB6JPBLS

Flanged Case

Mechanical Shaft Seal Construction

TABLE I

| B/M No. | HP | PH | RPM | "U" Dim. | Imp. Dia. | Imp. No. |
|---------------|----|----|------|----------|-----------|----------|
| B54214 | 25 | 3 | 1800 | 1-1/4" | 11.00" | L06194 |
| B54215 | 30 | 3 | 1800 | 1-1/4" | 11.75" | L06195 |
| B54216 | 40 | 3 | 1800 | 1-1/4" | 12.88" | L06193 |
| B54217 | 50 | 3 | 1800 | 1-1/4" | 13.50" | L02420 |



| Item No. | Part Description | Part Number |
|----------|---------------------------------------|--------------|
| 1 | Case, Volute | H00870 |
| 2 | Impeller | See Table I |
| 7 | Ring, Wearing | S01234 |
| 14 | Sleeve, Shaft | S18869 |
| 26 | Screw, Impeller 1/2 - 13 x 1-1/2" | S23623 |
| 32 | Key, 1/4 x 2-1/4" (See Note) | S23677 |
| 40 | Deflector | S06319 |
| 67 | Ring, Spacer | S19349 |
| 71 | Bracket | See Table II |
| 73A | Gasket, Volute Case | S06271 |
| 73B | Gasket, Balance Ring | S09943 |
| 89 | Seal, Mechanical Shaft | S32015 |
| 115 | Ring, Balance | S19105 |
| 800A | Capscrew, 5/8 - 11 x 1-1/2" (16 Req.) | S26999 |
| 801 | Stud, 3/8 - 16 x 1-1/2" (4 Req.) | S23995 |
| 802 | Nut, 3/8 - 16 (4 Req.) | S23103 |
| 805 | Washer, Lock | S23038 |
| 810 | Plug, Pipe 1/2 NPT (4 Req.) | S23717 |
| 815 | Ring, Retaining | S16767 |

TABLE II

| HP | PH | Bracket No. | "AK" Fit | "U" Dim. | Motor Frame |
|----|----|-------------|----------|----------|-------------|
| 25 | 3 | H03301 | 12-1/2" | 1-1/4" | 284JM |
| 30 | 3 | H03301 | 12-1/2" | 1-1/4" | 286JM |
| 40 | 3 | H03301 | 12-1/2" | 1-1/4" | 324JM |
| 50 | 3 | H03301 | 12-1/2" | 1-1/4" | 326JM |

NOTE: For an explanation of the tabulated material found on this page and for impeller key location, refer to *Supplement A* located at the beginning of this section.



TYPE "B" SINGLE STAGE CENTRIFUGAL PUMP Electric Motor Drive

| | |
|-------------------|-----------------|
| Section | CC |
| Page | 370.3 |
| Date | January 1, 2004 |
| Supersedes 9/1/97 | |

SILICON BRONZE IMPELLER

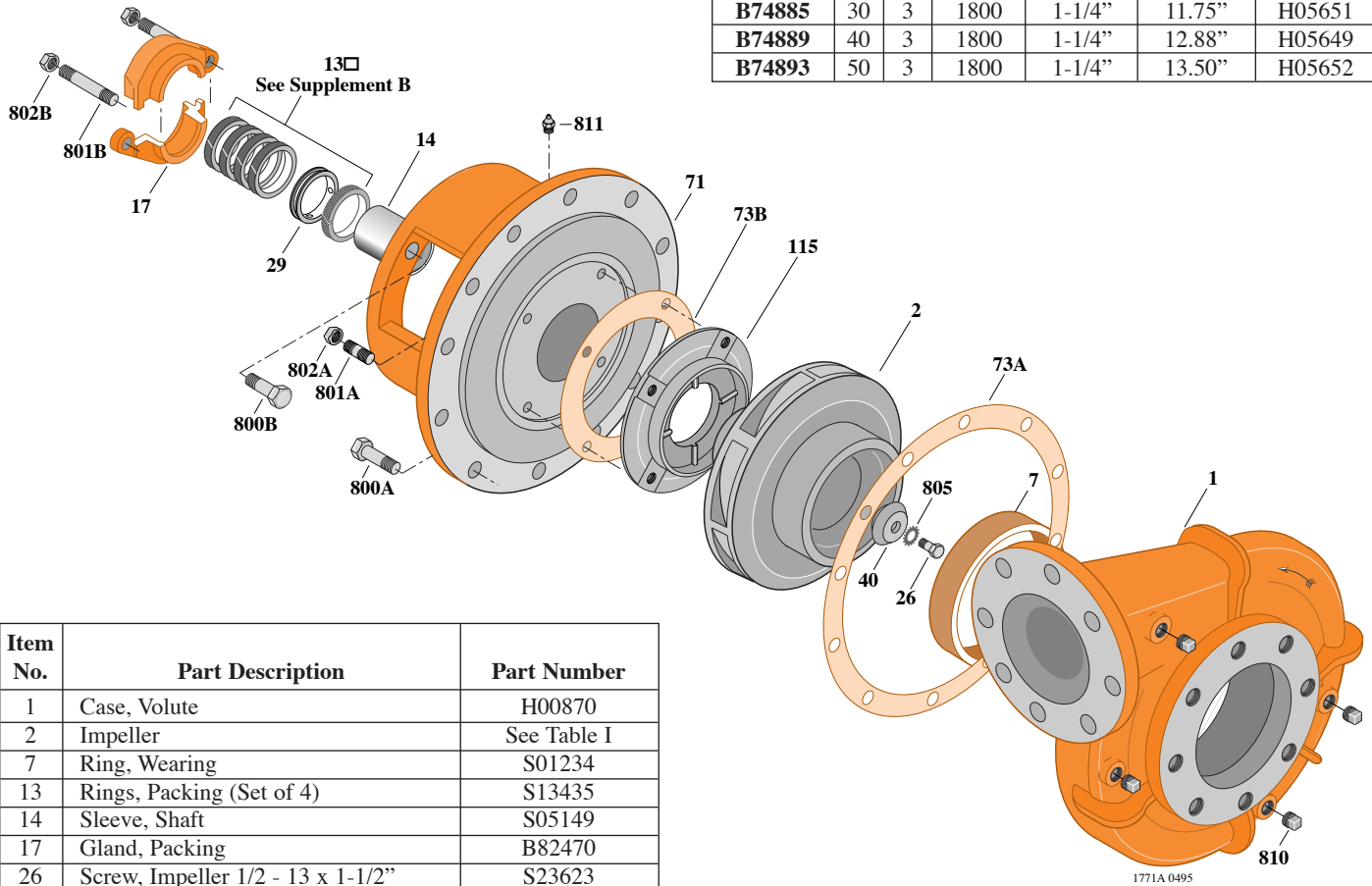
B6JPBL

Flanged Case

Packing Construction

TABLE I

| B/M No. | HP | PH | RPM | "U" Dim. | Imp. Dia. | Imp. No. |
|---------|----|----|------|----------|-----------|----------|
| B74881 | 25 | 3 | 1800 | 1-1/4" | 11.00" | H05650 |
| B74885 | 30 | 3 | 1800 | 1-1/4" | 11.75" | H05651 |
| B74889 | 40 | 3 | 1800 | 1-1/4" | 12.88" | H05649 |
| B74893 | 50 | 3 | 1800 | 1-1/4" | 13.50" | H05652 |



| Item No. | Part Description | Part Number |
|----------|---------------------------------------|--------------|
| 1 | Case, Volute | H00870 |
| 2 | Impeller | See Table I |
| 7 | Ring, Wearing | S01234 |
| 13 | Rings, Packing (Set of 4) | S13435 |
| 14 | Sleeve, Shaft | S05149 |
| 17 | Gland, Packing | B82470 |
| 26 | Screw, Impeller 1/2 - 13 x 1-1/2" | S23623 |
| 29 | Ring, Lantern | S19200 |
| 32 | Key, 1/4 x 2-1/4" (See Note) | S23677 |
| 40 | Deflector | S06319 |
| 71 | Bracket | See Table II |
| 73A | Gasket, Volute | S06271 |
| 73B | Gasket, Balance Ring | S09943 |
| 115 | Ring, Balance | S12315 |
| 800A | Capscrew, 5/8 - 11 x 1-1/2" (12 Req.) | S26999 |
| 800B | Capscrew, 5/8 - 11 x 1-1/2" (4 Req.) | S26999 |
| 801A | Stud, 3/8 - 16 x 1-3/4" (4 Req.) | S23996 |
| 801B | Stud, 3/8 - 16 x 2-1/2" (2 Req.) | S04438 |
| 802A | Nut, Hex 3/8 - 16 (4 Req.) | S23103 |
| 802B | Nut, Hex 3/8 - 16 (2 Req.) | S23343 |
| 805 | Washer, Lock | S23038 |
| 810 | Plug, Pipe 1/2" NPT (4 Req.) | S23717 |
| 811 | Fitting, Grease | S23700 |

TABLE II

| HP | PH | Bracket No. | "AK" Fit | "U" Dim. | Motor Frame |
|----|----|-------------|----------|----------|-------------|
| 25 | 3 | H01601 | 12-1/2" | 1-1/4" | 284JP |
| 30 | 3 | H01601 | 12-1/2" | 1-1/4" | 286JP |
| 40 | 3 | H01601 | 12-1/2" | 1-1/4" | 324JP |
| 50 | 3 | H01601 | 12-1/2" | 1-1/4" | 326JP |

NOTE: For an explanation of the tabulated material found on this page and for impeller key location, refer to *Supplement A* located at the beginning of this section.



TYPE "B" SINGLE STAGE CENTRIFUGAL PUMP Electric Motor Drive

| | |
|-------------------|-----------------|
| Section | CC |
| Page | 370.4 |
| Date | January 1, 2004 |
| Supersedes 9/1/97 | |

SILICON BRONZE IMPELLER

B6JPBLS

Flanged Case

Mechanical Shaft Seal Construction

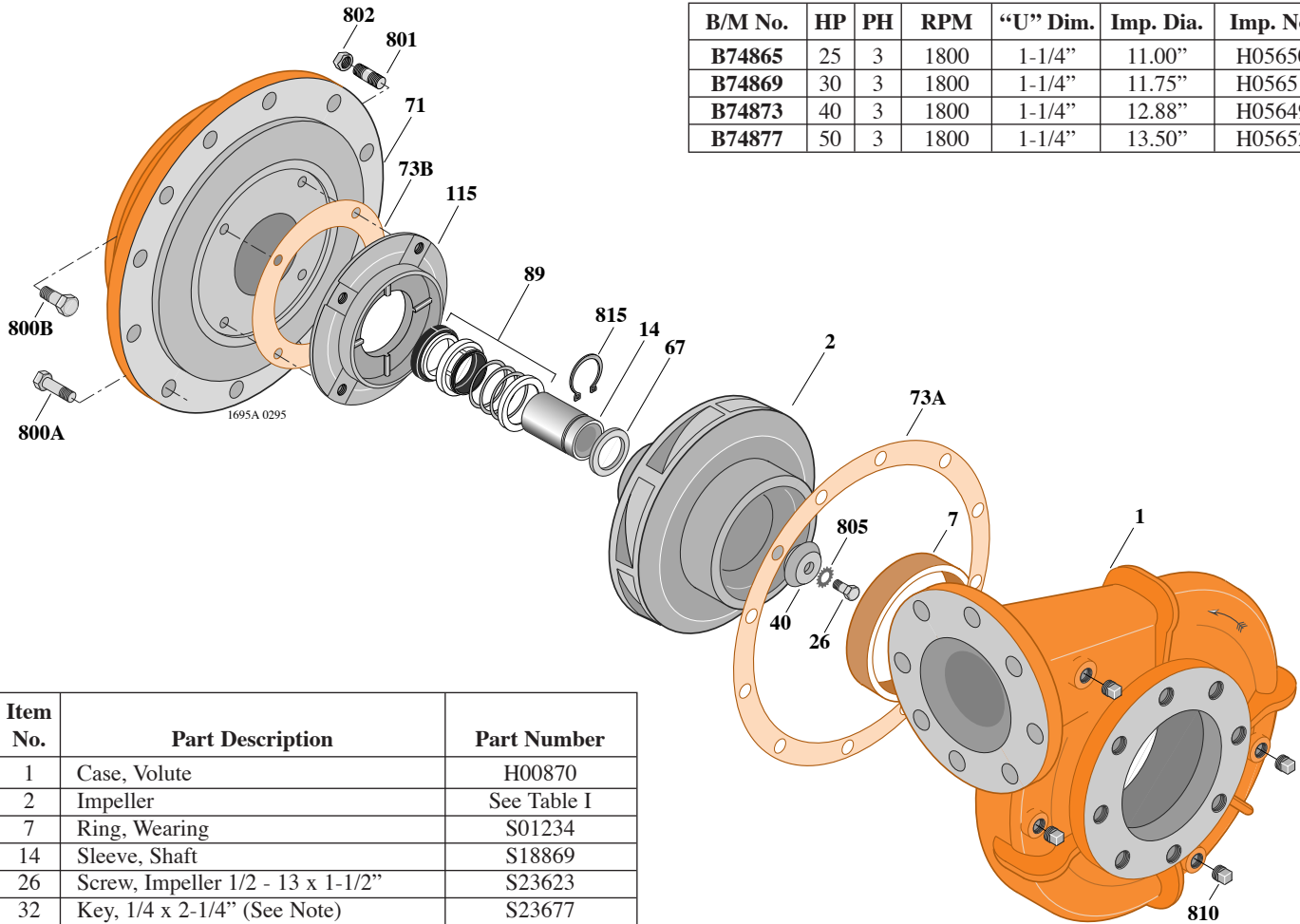


TABLE I

| B/M No. | HP | PH | RPM | "U" Dim. | Imp. Dia. | Imp. No. |
|---------|----|----|------|----------|-----------|----------|
| B74865 | 25 | 3 | 1800 | 1-1/4" | 11.00" | H05650 |
| B74869 | 30 | 3 | 1800 | 1-1/4" | 11.75" | H05651 |
| B74873 | 40 | 3 | 1800 | 1-1/4" | 12.88" | H05649 |
| B74877 | 50 | 3 | 1800 | 1-1/4" | 13.50" | H05652 |

| Item No. | Part Description | Part Number |
|----------|---------------------------------------|--------------|
| 1 | Case, Volute | H00870 |
| 2 | Impeller | See Table I |
| 7 | Ring, Wearing | S01234 |
| 14 | Sleeve, Shaft | S18869 |
| 26 | Screw, Impeller 1/2 - 13 x 1-1/2" | S23623 |
| 32 | Key, 1/4 x 2-1/4" (See Note) | S23677 |
| 40 | Deflector | S06319 |
| 67 | Ring, Spacer | S19349 |
| 71 | Bracket | See Table II |
| 73A | Gasket, Volute Case | S06271 |
| 73B | Gasket, Balance Ring | S09943 |
| 89 | Seal, Mechanical Shaft | S32015 |
| 115 | Ring, Balance | S19105 |
| 800A | Capscrew, 5/8 - 11 x 1-1/2" (12 Req.) | S26999 |
| 800B | Capscrew, 5/8 - 11 x 1-1/2" (4 Req.) | S26999 |
| 801 | Stud, 3/8 - 16 x 1-1/2" (4 Req.) | S23995 |
| 802 | Nut, 3/8 - 16 (4 Req.) | S23103 |
| 805 | Washer, Lock | S23038 |
| 810 | Plug, Pipe 1/2" NPT (4 Req.) | S23717 |
| 815 | Ring, Retaining | S16767 |
| • | Plug, Pipe 1/8" NPT (In Bracket) | S23714 |

TABLE II

| HP | PH | Bracket No. | "AK" Fit | "U" Dim. | Motor Frame |
|----|----|-------------|----------|----------|-------------|
| 25 | 3 | H03301 | 12-1/2" | 1-1/4" | 284JM |
| 30 | 3 | H03301 | 12-1/2" | 1-1/4" | 286JM |
| 40 | 3 | H03301 | 12-1/2" | 1-1/4" | 324JM |
| 50 | 3 | H03301 | 12-1/2" | 1-1/4" | 326JM |

NOTE: For an explanation of the tabulated material found on this page and for impeller key location, refer to *Supplement A* located at the beginning of this section.

NOTE: For seal flush line details, see *Supplement D*.

• Not illustrated.