



# TYPE "B" SINGLE STAGE CENTRIFUGAL PUMP Electric Motor Drive

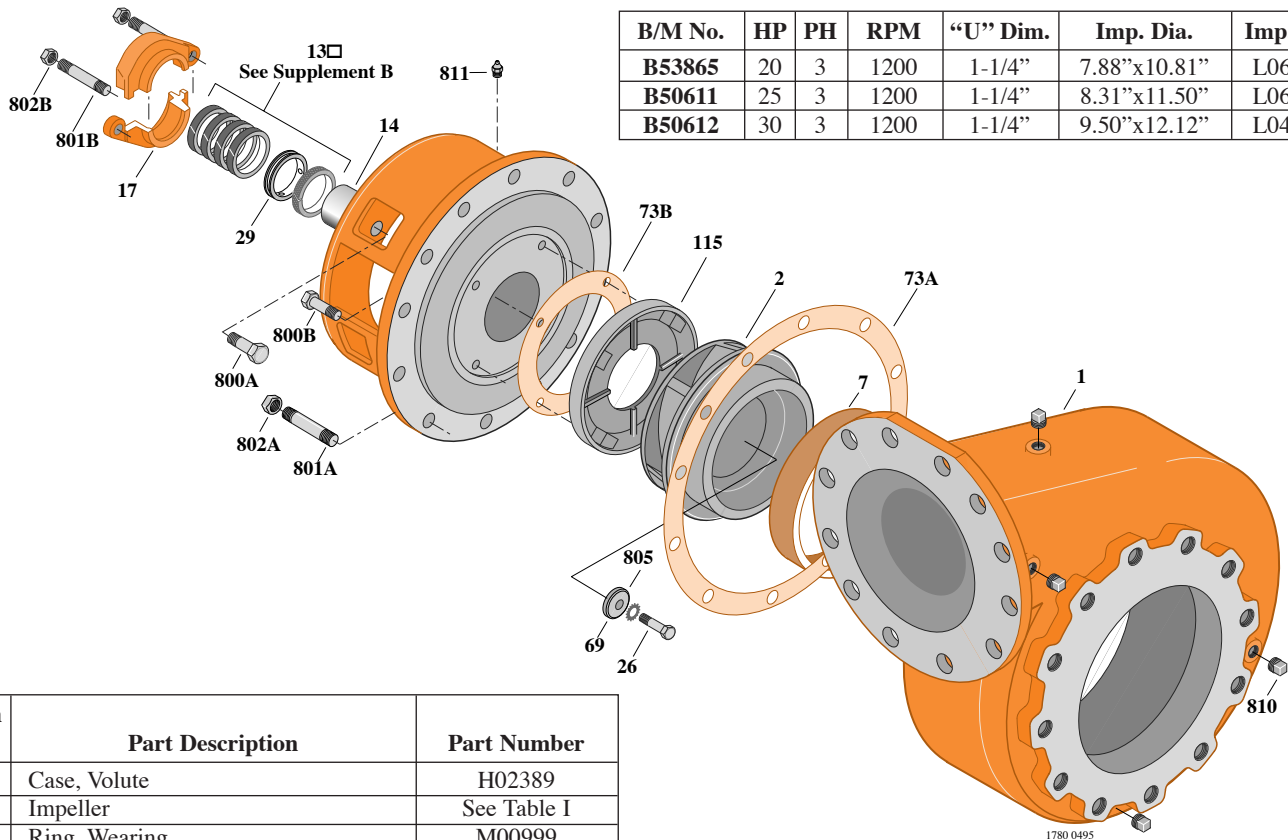
|                   |                 |
|-------------------|-----------------|
| Section           | CC              |
| Page              | 430.1           |
| Date              | January 1, 2004 |
| Supersedes 6/1/95 |                 |

## CAST IRON IMPELLER

## B10GPBM

### Flanged Case

### Packing Construction



**TABLE I**

| B/M No.       | HP | PH | RPM  | "U" Dim. | Imp. Dia.    | Imp. No. |
|---------------|----|----|------|----------|--------------|----------|
| <b>B53865</b> | 20 | 3  | 1200 | 1-1/4"   | 7.88"x10.81" | L06204   |
| <b>B50611</b> | 25 | 3  | 1200 | 1-1/4"   | 8.31"x11.50" | L06203   |
| <b>B50612</b> | 30 | 3  | 1200 | 1-1/4"   | 9.50"x12.12" | L04240   |

| Item No. | Part Description                     | Part Number  |
|----------|--------------------------------------|--------------|
| 1        | Case, Volute                         | H02389       |
| 2        | Impeller                             | See Table I  |
| 7        | Ring, Wearing                        | M00999       |
| 13       | Rings, Packing (Set of 4)            | S13435       |
| 14       | Sleeve, Shaft                        | S05149       |
| 17       | Gland, Packing                       | B82470       |
| 26       | Screw, Impeller 1/2 - 13 x 2-1/2"    | S23629       |
| 29       | Ring, Lantern                        | S19200       |
| 32       | Key, 1/4 x 2-1/4" (See Note)         | S23677       |
| 69       | Washer, Impeller                     | S06319       |
| 71       | Bracket                              | See Table II |
| 73A      | Gasket, Volute Case                  | S06271       |
| 73B      | Gasket, Balance Ring                 | S09943       |
| 115      | Ring, Balance                        | S14065       |
| 800A     | Capscrew, 5/8 - 11 x 1-1/2" (4 Req.) | S26999       |
| 800B     | Capscrew, 3/8 - 16 x 1-1/2" (4 Req.) | S26830       |
| 801A     | Stud, 5/8 - 11 x 2-1/4" (12 Req.)    | S24061       |
| 801B     | Stud, 3/8 - 16 x 2-1/2" (2 Req.)     | S04438       |
| 802A     | Nut, Hex 5/8 - 11 (12 Req.)          | S23109       |
| 802B     | Nut, Hex 3/8 - 16 (2 Req.)           | S23343       |
| 805      | Washer, Lock                         | S23038       |
| 810      | Plug, Pipe 1/2 NPT (4 Req.)          | S23717       |
| 811      | Fitting, Grease                      | S23700       |
| 812      | Elbow, Street                        | S25421       |

**TABLE II**

| HP | PH | Bracket No. | "AK" Fit | "U" Dim. | Motor Frame |
|----|----|-------------|----------|----------|-------------|
| 20 | 3  | H01601      | 12-1/2"  | 1-1/4"   | 286JP       |
| 25 | 3  | H01601      | 12-1/2"  | 1-1/4"   | 324JP       |
| 30 | 3  | H01601      | 12-1/2"  | 1-1/4"   | 326JP       |

**NOTE:** For an explanation of the tabulated material found on this page and for impeller key location, refer to *Supplement A* located at the beginning of this section.



# TYPE "B" SINGLE STAGE CENTRIFUGAL PUMP Electric Motor Drive

|                   |                 |
|-------------------|-----------------|
| Section           | CC              |
| Page              | 430.2           |
| Date              | January 1, 2004 |
| Supersedes 6/1/95 |                 |

## CAST IRON IMPELLER

## B10GPBM

### Flanged Case

### Packing Construction

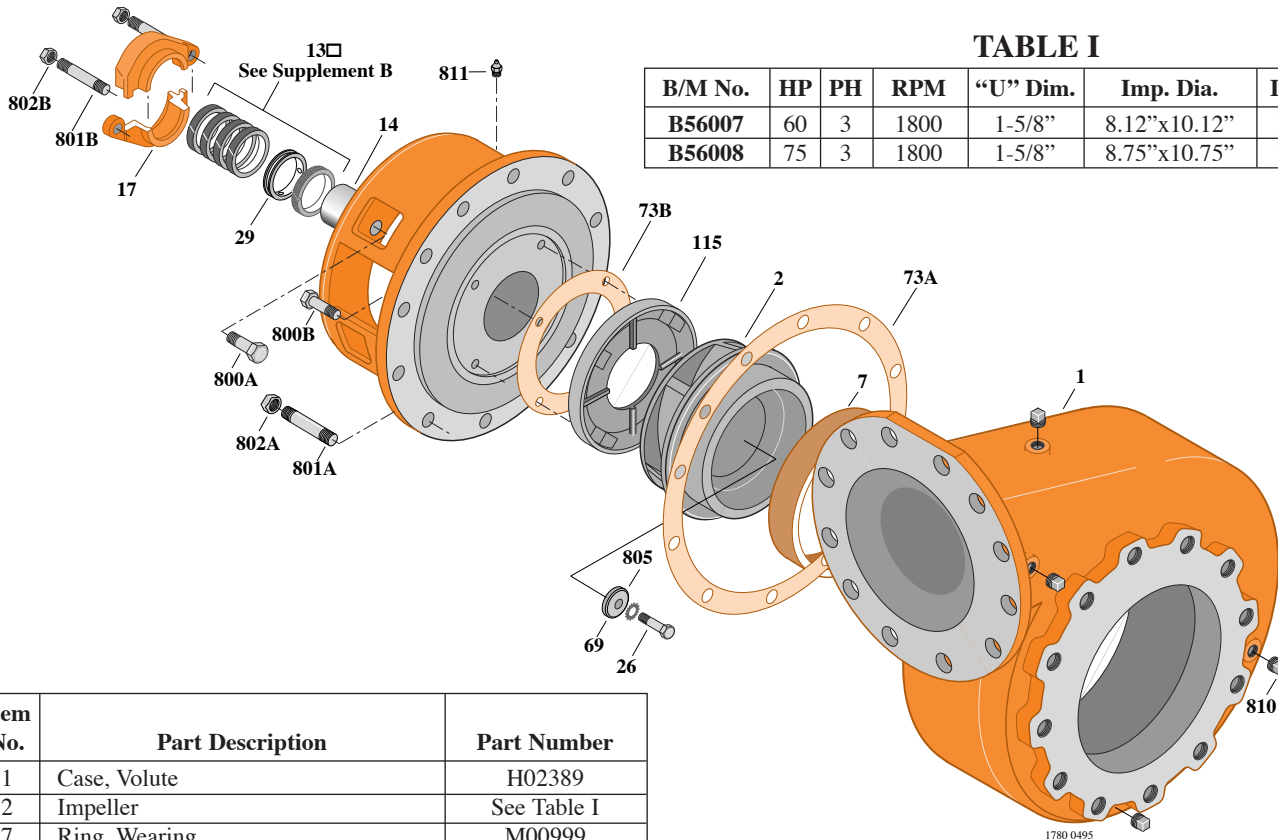


TABLE I

| B/M No. | HP | PH | RPM  | "U" Dim. | Imp. Dia.    | Imp. No. |
|---------|----|----|------|----------|--------------|----------|
| B56007  | 60 | 3  | 1800 | 1-5/8"   | 8.12"x10.12" | L06205   |
| B56008  | 75 | 3  | 1800 | 1-5/8"   | 8.75"x10.75" | L06206   |

| Item No. | Part Description                              | Part Number  |
|----------|---|--------------|
| 1        | Case, Volute                                  | H02389       |
| 2        | Impeller                                      | See Table I  |
| 7        | Ring, Wearing                                 | M00999       |
| 13       | Rings, Packing (Set of 4)                     | S13437       |
| 14       | Sleeve, Shaft                                 | S07073       |
| 17       | Gland, Packing                                | B82471       |
| 26       | Screw, Impeller 1/2 - 13 x 2-1/2"             | S23621       |
| 29       | Ring, Lantern                                 | S19198       |
| 32       | Key, 1/4 x 2-1/4" (See Note)                  | S23677       |
| 69       | Washer, Impeller                              | S34492       |
| 71       | Bracket                                       | See Table II |
| 73A      | Gasket, Volute Case                           | S06271       |
| 73B      | Gasket, Balance Ring                          | S09943       |
| 115      | Ring, Balance                                 | S14065       |
| 800A     | Capscrew, 5/8 - 11 x 1-3/4" (4 Req.)          | S27001       |
| 800B     | Capscrew, 3/8 - 16 x 1-1/2" (4 Req.)          | S26830       |
| 801A     | Stud, 5/8 - 11 x 2" (12 Req.)                 | S24060       |
| 801B     | Stud, 3/8 - 16 x 2-1/2" (2 Req.)              | S04438       |
| 802A     | Nut, Hex 5/8 - 11 (12 Req.)                   | S23109       |
| 802B     | Nut, Hex 3/8 - 16 (2 Req.)                    | S23343       |
| 805      | Washer, Lock                                  | S23038       |
| 810      | Plug, Pipe 1/2 NPT (5 Req.)                   | S23717       |
| 811      | Fitting, Grease                               | S23700       |
| 812      | Elbow, Street                                 | S25421       |
| •        | Plug, Pipe 1/4 NPT (2 Req.) (Not Illustrated) | S23715       |

TABLE II

| HP | PH | Bracket No. | "AK" Fit | "U" Dim. | Motor Frame |
|----|----|-------------|----------|----------|-------------|
| 60 | 3  | H03622      | 12-1/2"  | 1-5/8"   | 364JP       |
| 75 | 3  | H03622      | 12-1/2"  | 1-5/8"   | 365JP       |

**NOTE:** For an explanation of the tabulated material found on this page and for impeller key location, refer to *Supplement A* located at the beginning of this section.



# TYPE "B" SINGLE STAGE CENTRIFUGAL PUMP Electric Motor Drive

|                   |                 |
|-------------------|-----------------|
| Section           | CC              |
| Page              | 430.3           |
| Date              | January 1, 2004 |
| Supersedes 6/1/95 |                 |

## CAST IRON IMPELLER

## B10GPBM

### Flanged Case

### Packing Construction

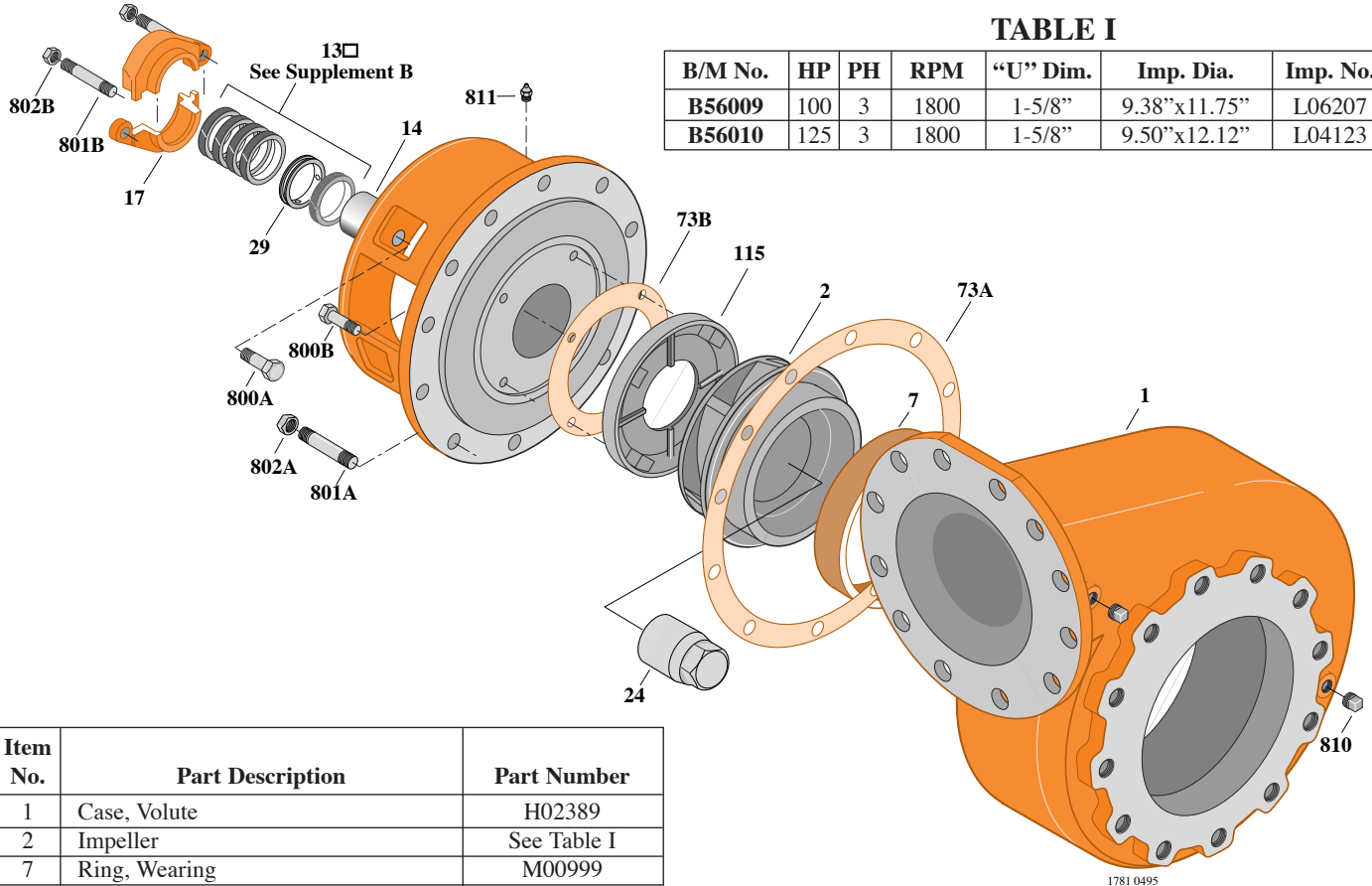


TABLE I

| B/M No. | HP  | PH | RPM  | "U" Dim. | Imp. Dia.    | Imp. No. |
|---------|-----|----|------|----------|--------------|----------|
| B56009  | 100 | 3  | 1800 | 1-5/8"   | 9.38"x11.75" | L06207   |
| B56010  | 125 | 3  | 1800 | 1-5/8"   | 9.50"x12.12" | L04123   |

| Item No. | Part Description                              | Part Number  |
|----------|---|--------------|
| 1        | Case, Volute                                  | H02389       |
| 2        | Impeller                                      | See Table I  |
| 7        | Ring, Wearing                                 | M00999       |
| 13       | Rings, Packing (Set of 4)                     | S13437       |
| 14       | Sleeve, Shaft                                 | S07073       |
| 17       | Gland, Packing                                | B82471       |
| 24       | Nut, Impeller                                 | S07829       |
| 29       | Ring, Lantern                                 | S19198       |
| 32       | Key, 3/8 x 2-1/4" (See Note)                  | S23940       |
| 71       | Bracket                                       | See Table II |
| 73A      | Gasket, Volute Case                           | S06271       |
| 73B      | Gasket, Balance Ring                          | S09943       |
| 115      | Ring, Balance                                 | S14065       |
| 800A     | Cap screw, 5/8 - 11 x 1-3/4" (4 Req.)         | S27001       |
| 800B     | Cap screw, 3/8 - 16 x 1-1/2" (4 Req.)         | S26830       |
| 801A     | Stud, 5/8 - 11 x 2" (12 Req.)                 | S24060       |
| 801B     | Stud, 3/8 - 16 x 2-1/2" (2 Req.)              | S04438       |
| 802A     | Nut, Hex 5/8 - 11 (12 Req.)                   | S23109       |
| 802B     | Nut, Hex 3/8 - 16 (2 Req.)                    | S23343       |
| 810      | Plug, Pipe 1/2 NPT (5 Req.)                   | S23717       |
| 811      | Fitting, Grease                               | S23700       |
| 812      | Elbow, Street                                 | S25421       |
| •        | Plug, Pipe 1/4 NPT (2 Req.) (Not Illustrated) | S23715       |

TABLE II

| HP  | PH | Bracket No. | "AK" Fit | "U" Dim. | Motor Frame |
|-----|----|-------------|----------|----------|-------------|
| 100 | 3  | H03622      | 12-1/2"  | 1-5/8"   | 404TC       |
| 125 | 3  | H03622      | 12-1/2"  | 1-5/8"   | 405TC       |

**NOTE:** For an explanation of the tabulated material found on this page and for impeller key location, refer to *Supplement A* located at the beginning of this section.



# TYPE "B" SINGLE STAGE CENTRIFUGAL PUMP Electric Motor Drive

|                   |                 |
|-------------------|-----------------|
| Section           | CC              |
| Page              | 430.4           |
| Date              | January 1, 2004 |
| Supersedes 6/1/95 |                 |

## CAST IRON IMPELLER

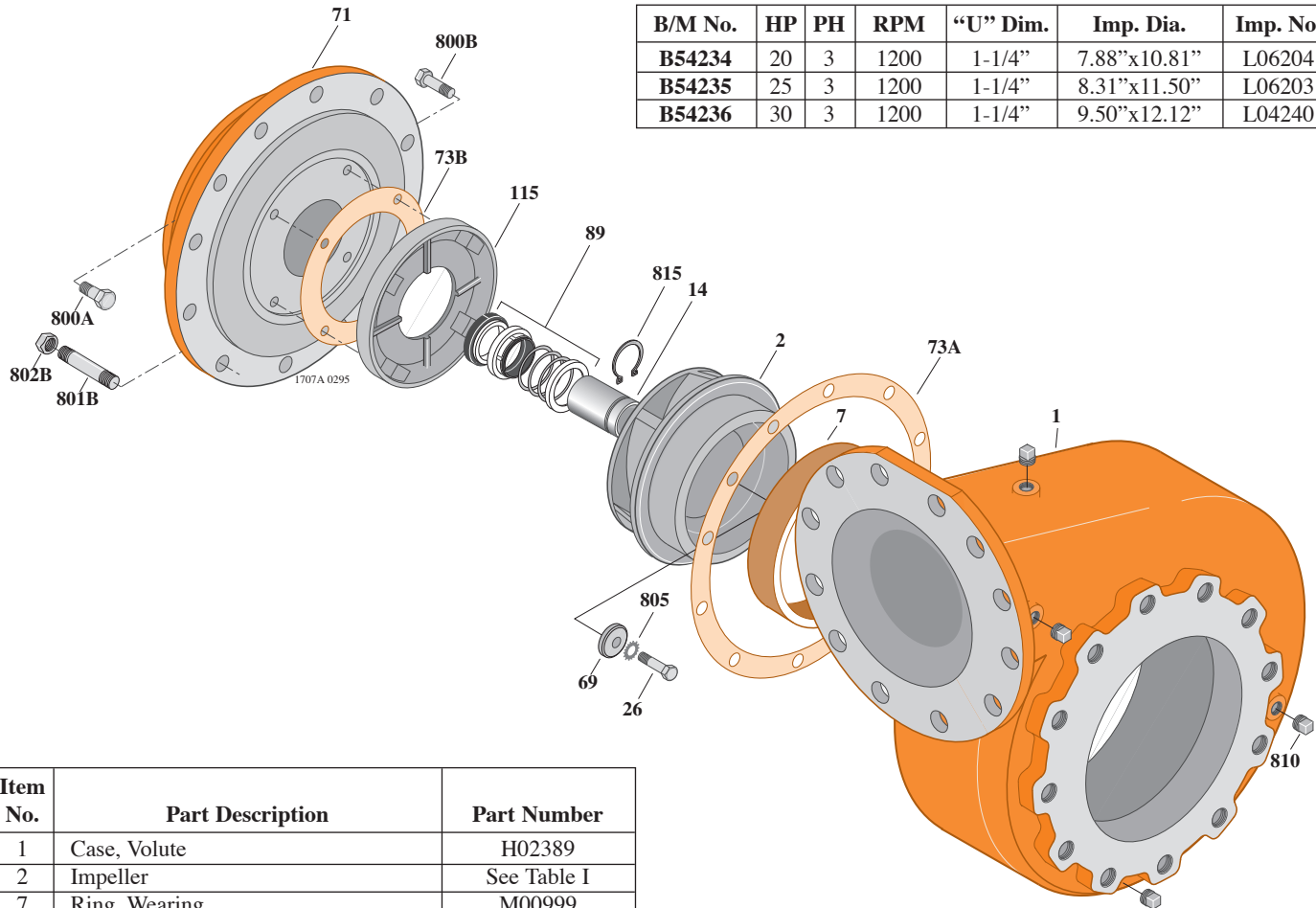
## B10GPBMS

### Flanged Case

### Mechanical Shaft Seal Construction

**TABLE I**

| B/M No.       | HP | PH | RPM  | "U" Dim. | Imp. Dia.    | Imp. No. |
|---------------|----|----|------|----------|--------------|----------|
| <b>B54234</b> | 20 | 3  | 1200 | 1-1/4"   | 7.88"x10.81" | L06204   |
| <b>B54235</b> | 25 | 3  | 1200 | 1-1/4"   | 8.31"x11.50" | L06203   |
| <b>B54236</b> | 30 | 3  | 1200 | 1-1/4"   | 9.50"x12.12" | L04240   |



| Item No. | Part Description                     | Part Number  |
|----------|--------------------------------------|--------------|
| 1        | Case, Volute                         | H02389       |
| 2        | Impeller                             | See Table I  |
| 7        | Ring, Wearing                        | M00999       |
| 14       | Sleeve, Shaft                        | S18869       |
| 26       | Screw, Impeller 1/2 - 13 x 2-1/2"    | S23629       |
| 32       | Key, 1/4 x 2-1/4" (See Note)         | S23677       |
| 69       | Washer, Impeller                     | S06319       |
| 71       | Bracket                              | See Table II |
| 73A      | Gasket, Volute Case                  | S06271       |
| 73B      | Gasket, Balance Ring                 | S09943       |
| 89       | Seal, Mechanical Shaft               | S32015       |
| 115      | Ring, Balance                        | S19073       |
| 800A     | Capscrew, 5/8 - 11 x 1-1/2" (4 Req.) | S26999       |
| 800B     | Capscrew, 3/8 - 16 x 1" (4 Req.)     | S26826       |
| 801      | Stud, 5/8 - 11 x 2-1/4" (12 Req.)    | S24061       |
| 802      | Nut, Hex 5/8 - 11 (12 Req.)          | S23109       |
| 805      | Washer, Lock                         | S23038       |
| 810      | Plug, Pipe 1/2 NPT (4 Req.)          | S23717       |
| 815      | Ring, Retaining                      | S16767       |
| •        | Ring Spacer (Not Illustrated)        | S19349       |

**TABLE II**

| HP | PH | Bracket No. | "AK" Fit | "U" Dim. | Motor Frame |
|----|----|-------------|----------|----------|-------------|
| 20 | 3  | H03301      | 12-1/2"  | 1-1/4"   | 286JM       |
| 25 | 3  | H03301      | 12-1/2"  | 1-1/4"   | 324JM       |
| 30 | 3  | H03301      | 12-1/2"  | 1-1/4"   | 326JM       |

**NOTE:** For an explanation of the tabulated material found on this page and for impeller key location, refer to *Supplement A* located at the beginning of this section.



# TYPE "B" SINGLE STAGE CENTRIFUGAL PUMP Electric Motor Drive

|                   |                 |
|-------------------|-----------------|
| Section           | CC              |
| Page              | 430.5           |
| Date              | January 1, 2004 |
| Supersedes 6/1/95 |                 |

## CAST IRON IMPELLER

## B10GPBMS

### Flanged Case

### Mechanical Shaft Seal Construction

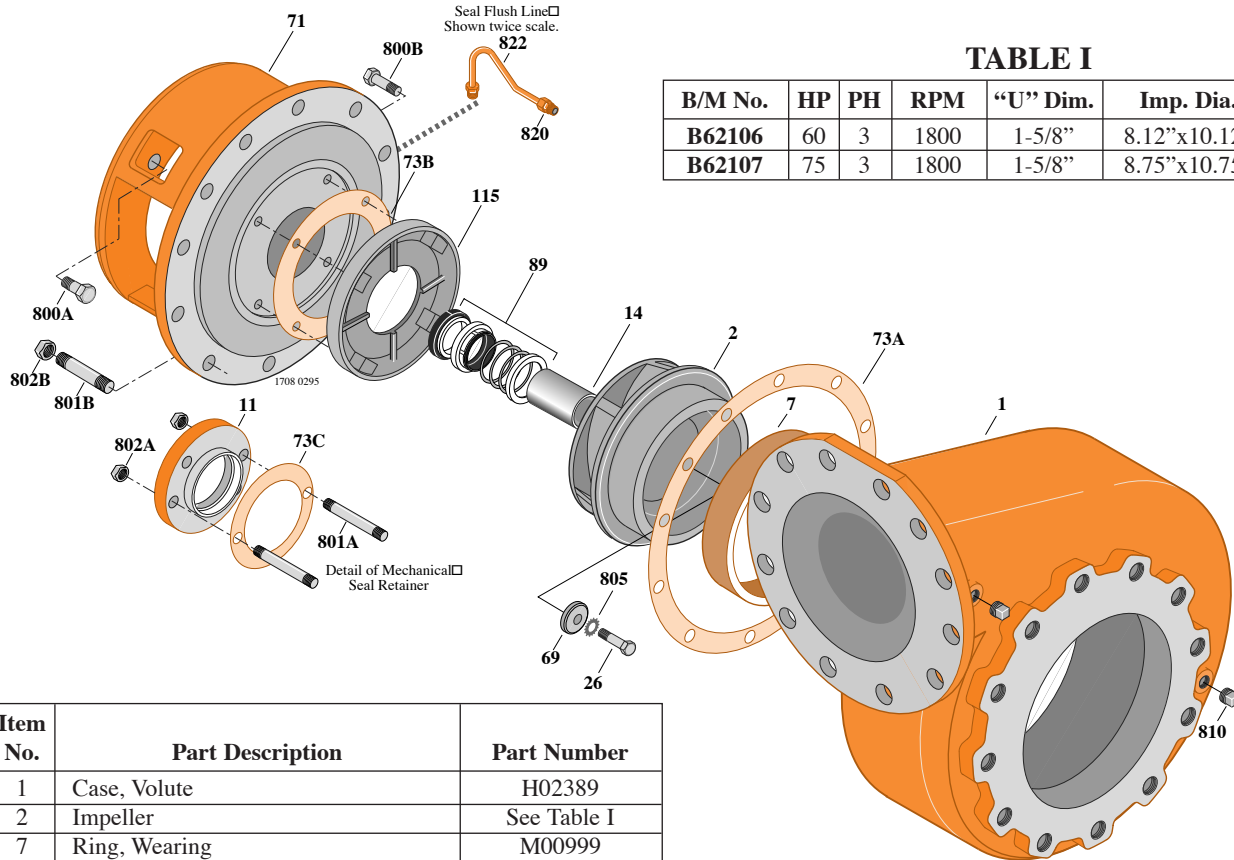


TABLE I

| B/M No. | HP | PH | RPM  | "U" Dim. | Imp. Dia.    | Imp. No. |
|---------|----|----|------|----------|--------------|----------|
| B62106  | 60 | 3  | 1800 | 1-5/8"   | 8.12"x10.12" | L06205   |
| B62107  | 75 | 3  | 1800 | 1-5/8"   | 8.75"x10.75" | L06206   |

| Item No. | Part Description                     | Part Number  |
|----------|--------------------------------------|--------------|
| 1        | Case, Volute                         | H02389       |
| 2        | Impeller                             | See Table I  |
| 7        | Ring, Wearing                        | M00999       |
| 11       | Retainer, Mechanical Shaft Seal      | S15377       |
| 14       | Sleeve, Shaft                        | S07073       |
| 26       | Screw, Impeller 1/2 - 13 x 1-1/4"    | S23621       |
| 32       | Key, 1/4 x 2-1/4" (See Note)         | S23677       |
| 69       | Washer, Impeller                     | S34492       |
| 71       | Bracket                              | See Table II |
| 73A      | Gasket, Volute Case                  | S06271       |
| 73B      | Gasket, Balance Ring                 | S09943       |
| 73C      | Gasket, Seal Retainer                | S16411       |
| 89       | Seal, Mechanical Shaft               | S32016       |
| 115      | Ring, Balance                        | S14065       |
| 800A     | Capscrew, 5/8 - 11 x 1-3/4" (4 Req.) | S27001       |
| 800B     | Capscrew, 3/8 - 16 x 1-1/2" (4 Req.) | S26830       |
| 801A     | Stud, 3/8 - 16 x 2-1/2" (2 Req.)     | S04438       |
| 801B     | Stud, 5/8 - 11 x 2" (12 Req.)        | S24060       |
| 802A     | Nut, Hex 3/8 - 16 (2 Req.)           | S23343       |
| 802B     | Nut, Hex 5/8 - 11 (12 Req.)          | S23109       |
| 805      | Washer, Lock                         | S23038       |
| 810      | Plug, Pipe 1/2 NPT (5 Req.)          | S23717       |
| 820      | Connector, Comp. Fitting (2 Req.)    | S24013       |
| 822      | Tubing, Copper                       | S20677       |
| •        | Plug, Pipe 1/8 NPT (Not Illustrated) | S23714       |
| •        | Plug, Pipe 1/4 NPT (Not Illustrated) | S19349       |

TABLE II

| HP | PH | Bracket No. | "AK" Fit | "U" Dim. | Motor Frame |
|----|----|-------------|----------|----------|-------------|
| 60 | 3  | H03936      | 12-1/2"  | 1-5/8"   | 364JP       |
| 75 | 3  | H03936      | 12-1/2"  | 1-5/8"   | 365JP       |

**NOTE:** For an explanation of the tabulated material found on this page and for impeller key location, refer to *Supplement A* located at the beginning of this section.



# TYPE "B" SINGLE STAGE CENTRIFUGAL PUMP Electric Motor Drive

|                   |                 |
|-------------------|-----------------|
| Section           | CC              |
| Page              | 430.6           |
| Date              | January 1, 2004 |
| Supersedes 6/1/95 |                 |

## CAST IRON IMPELLER

## B10GPBMS

### Flanged Case

### Mechanical Shaft Seal Construction

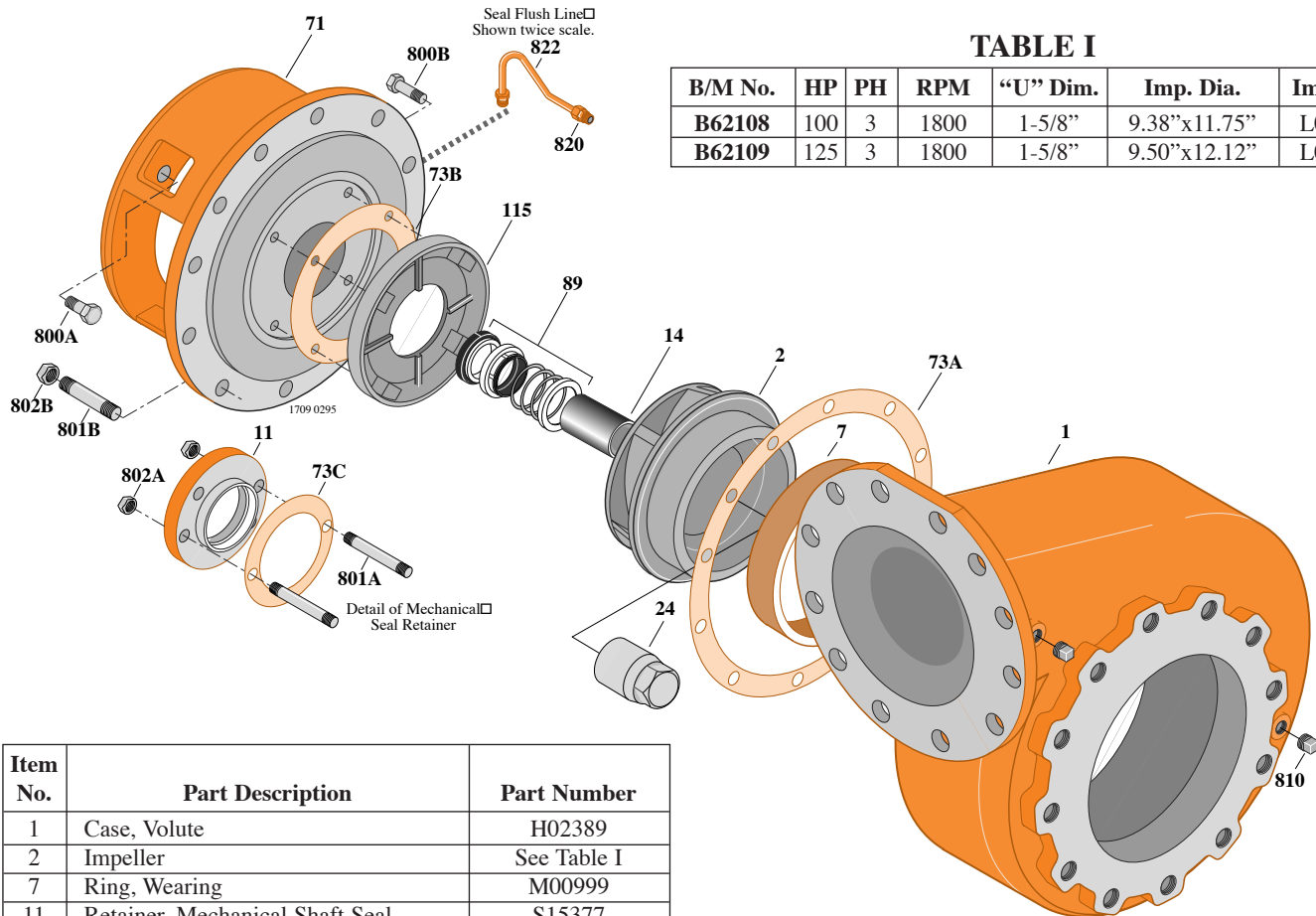


TABLE I

| B/M No. | HP  | PH | RPM  | "U" Dim. | Imp. Dia.    | Imp. No. |
|---------|-----|----|------|----------|--------------|----------|
| B62108  | 100 | 3  | 1800 | 1-5/8"   | 9.38"x11.75" | L06207   |
| B62109  | 125 | 3  | 1800 | 1-5/8"   | 9.50"x12.12" | L04123   |

| Item No. | Part Description                      | Part Number  |
|----------|---------------------------------------|--------------|
| 1        | Case, Volute                          | H02389       |
| 2        | Impeller                              | See Table I  |
| 7        | Ring, Wearing                         | M00999       |
| 11       | Retainer, Mechanical Shaft Seal       | S15377       |
| 14       | Sleeve, Shaft                         | S07073       |
| 24       | Nut, Impeller                         | S07829       |
| 32       | Key, 3/8 x 2-1/4" (See Note)          | S23940       |
| 71       | Bracket                               | See Table II |
| 73A      | Gasket, Volute Case                   | S06271       |
| 73B      | Gasket, Balance Ring                  | S09943       |
| 73C      | Gasket, Seal Retainer                 | S16411       |
| 89       | Seal, Mechanical Shaft                | S32016       |
| 115      | Ring, Balance                         | S14065       |
| 800A     | Cap screw, 5/8 - 11 x 1-3/4" (4 Req.) | S27001       |
| 800B     | Cap screw, 3/8 - 16 x 1-1/2" (4 Req.) | S26830       |
| 801A     | Stud, 3/8 - 16 x 2-1/2" (2 Req.)      | S04438       |
| 801B     | Stud, 5/8 - 11 x 2" (12 Req.)         | S24060       |
| 802A     | Nut, Hex 3/8 - 16 (2 Req.)            | S23343       |
| 802B     | Nut, Hex 5/8 - 11 (12 Req.)           | S23109       |
| 810      | Plug, Pipe 1/2 NPT (5 Req.)           | S23717       |
| 820      | Connector, Comp. Fitting (2 Req.)     | S24013       |
| 822      | Tubing, Copper                        | S20677       |
| •        | Plug, Pipe 1/8 NPT (Not Illustrated)  | S23714       |
| •        | Plug, Pipe 1/4 NPT (Not Illustrated)  | S19349       |

TABLE II

| HP  | PH | Bracket No. | "AK" Fit | "U" Dim. | Motor Frame |
|-----|----|-------------|----------|----------|-------------|
| 100 | 3  | H03936      | 12-1/2"  | 1-5/8"   | 404TC       |
| 125 | 3  | H03936      | 12-1/2"  | 1-5/8"   | 405TC       |

**NOTE:** For an explanation of the tabulated material found on this page and for impeller key location, refer to *Supplement A* located at the beginning of this section.





# TYPE "B" SINGLE STAGE CENTRIFUGAL PUMP Electric Motor Drive

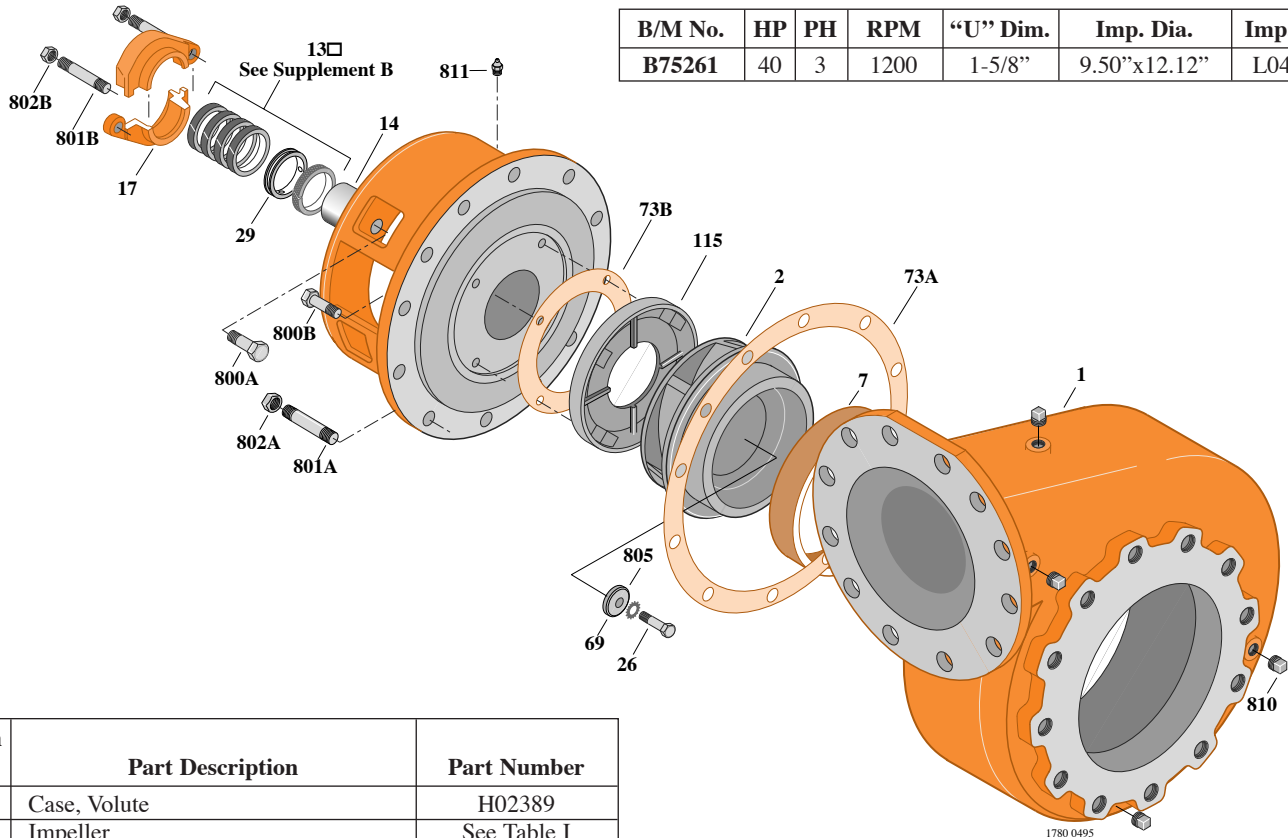
|                   |                 |
|-------------------|-----------------|
| Section           | CC              |
| Page              | 430.7           |
| Date              | January 1, 2004 |
| Supersedes 9/1/97 |                 |

## CAST IRON IMPELLER

## B10GPBM

### Flanged Case

### Packing Construction



**TABLE I**

| B/M No. | HP | PH | RPM  | "U" Dim. | Imp. Dia.    | Imp. No. |
|---------|----|----|------|----------|--------------|----------|
| B75261  | 40 | 3  | 1200 | 1-5/8"   | 9.50"x12.12" | L04123   |

| Item No. | Part Description                     | Part Number  |
|----------|--------------------------------------|--------------|
| 1        | Case, Volute                         | H02389       |
| 2        | Impeller                             | See Table I  |
| 7        | Ring, Wearing                        | M00999       |
| 13       | Rings, Packing (Set of 4)            | S13437       |
| 14       | Sleeve, Shaft                        | S07073       |
| 17       | Gland, Packing                       | B82471       |
| 26       | Screw, Impeller 1/2 - 13 x 1-1/4"    | S23621       |
| 29       | Ring, Lantern                        | S19198       |
| 32       | Key, 3/8 x 2-1/4" (See Note)         | S23940       |
| 69       | Washer, Impeller                     | S34492       |
| 71       | Bracket                              | See Table II |
| 73A      | Gasket, Volute Case                  | S06271       |
| 73B      | Gasket, Balance Ring                 | S09943       |
| 115      | Ring, Balance                        | S14065       |
| 800A     | Capscrew, 5/8 - 11 x 1-3/4" (4 Req.) | S27001       |
| 800B     | Capscrew, 3/8 - 16 x 1-1/2" (4 Req.) | S26830       |
| 801A     | Stud, 5/8 - 11 x 2" (12 Req.)        | S24060       |
| 801B     | Stud, 3/8 - 16 x 2-1/2" (2 Req.)     | S04438       |
| 802A     | Nut, Hex 5/8 - 11 (12 Req.)          | S23109       |
| 802B     | Nut, Hex 3/8 - 16 (2 Req.)           | S23343       |
| 805      | Washer, Lock                         | S23038       |
| 810      | Plug, Pipe 1/2" NPT (5 Req.)         | S23717       |
| 811      | Fitting, Grease                      | S23700       |

**TABLE II**

| HP | PH | Bracket No. | "AK" Fit | "U" Dim. | Motor Frame |
|----|----|-------------|----------|----------|-------------|
| 40 | 3  | H03622      | 12-1/2"  | 1-5/8"   | 364TCZ      |

**NOTE:** For an explanation of the tabulated material found on this page and for impeller key location, refer to *Supplement A* located at the beginning of this section.

