

**CURVES**

C900 R3

---

# Lineshaft and Submersible Turbine Pump Curves

900 RPM CURVES - 60 CYCLE PERFORMANCE

---

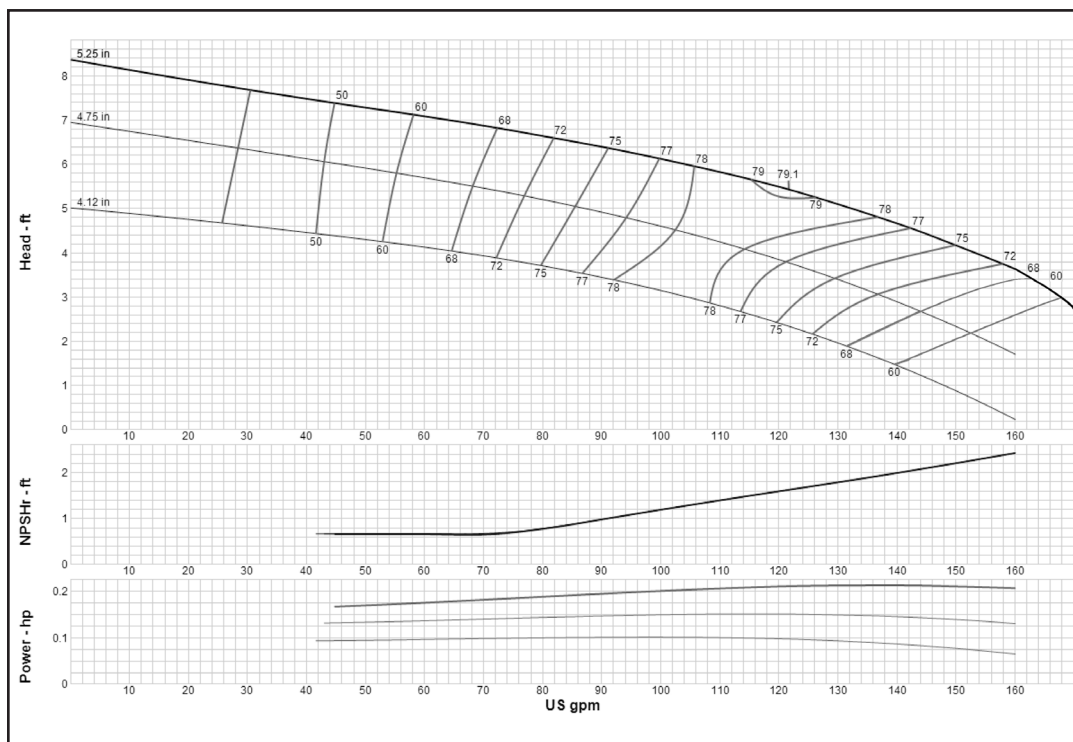
 **GOULDS**  
WATER TECHNOLOGY  
a xylem brand

## INDEX – 60 CYCLE PERFORMANCE – 900 RPM

Model	RPM	Curve Number	Date Issued
8RJLC	885	E6408REPC2	September 1, 2017
10MO	880	E6812MCPC1	September 1, 2017
10RJHC	885	E6410RCPC1	September 1, 2017
10RJLC	880	E6410REPC1	September 1, 2017
12MLO	880	E6812MBPC1	September 1, 2017
12MMO	880	E6812MCPC1	September 1, 2017
20EHC	880	E6820EAPC1	July 1, 2014
20EHC ADD	880	E6820EAPC1	July 1, 2014
20EHXC	880	E6820ERPC0	July 1, 2014
20ELC	880	E6820RDPC3	July 1, 2014
20GHC	885	E6620GAPCI	September 1, 2017
20GHC ADD	885	E6620GAPCI	July 1, 2014
20GHXC	880	E6620GGPF0	July 1, 2014
20GLC	885	E6620GCPCO	September 1, 2017
20GLXC	880	E6420GLPF0	July 1, 2014
20RCHC	880	E6620CCPC1	July 1, 2014
20RCLC	880	E6620CFPC1	July 1, 2014
24CHC	880	E6824CCPC1	July 1, 2014
24CLC	880	E6824CFPC1	July 1, 2014
24DMC	880	E6824DJPC0	July 1, 2014
24DMC ADD	880	E6824DJPC0	July 1, 2014
24DXC	885	E01033F	July 1, 2014
24EHC	880	E6824EBPC1	July 1, 2014
24EHC ADD	880	E6824EBPC1	July 1, 2014
24ELC	880	E6824EDPC2	July 1, 2014
24FHC	880	E6824FAPC2	September 1, 2017
24GHC	880	E6824GAPP1	September 1, 2017
24GHC ADD	880	E6824GAPP1	July 1, 2014
24GHXC	880	E6824GGPC1	July 1, 2014
24GLC	880	E6824GCPC1	September 1, 2017
26GHC	880	E6826GAPC1	September 1, 2017
26GHC ADD	880	E6826GAPC1	July 1, 2014
26GHXC	880	E6626GCPC1	July 1, 2014
28BHC	880	E6828BBPC0	July 1, 2014
28BLC	880	E6828BEPC0	July 1, 2014
28GHC	880	E6828GAPC1	July 1, 2014
30BHC	880	E6630BDPC2	September 1, 2017
30BHC ADD	880	E6630BDPC2	July 1, 2014
30BLC	880	E6830BGPC3	September 1, 2017
30BLC ADD	880	E6830BGPC3	July 1, 2014

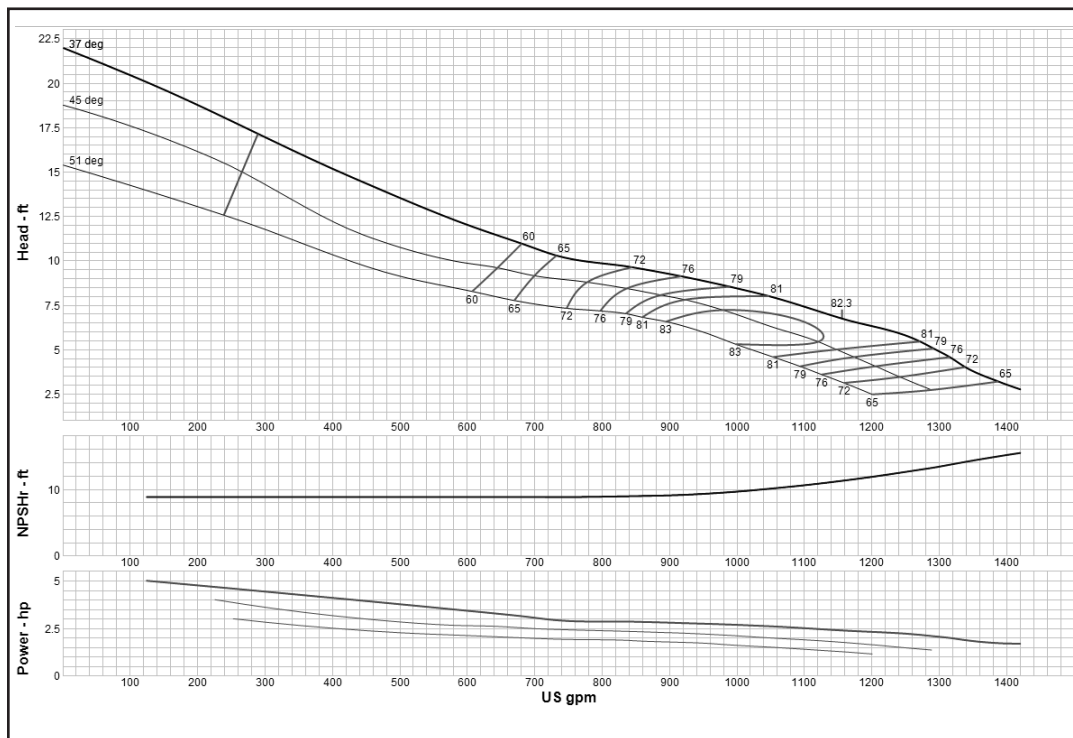
## Turbine

### MODEL 8RJLC (Effective September 1, 2017)



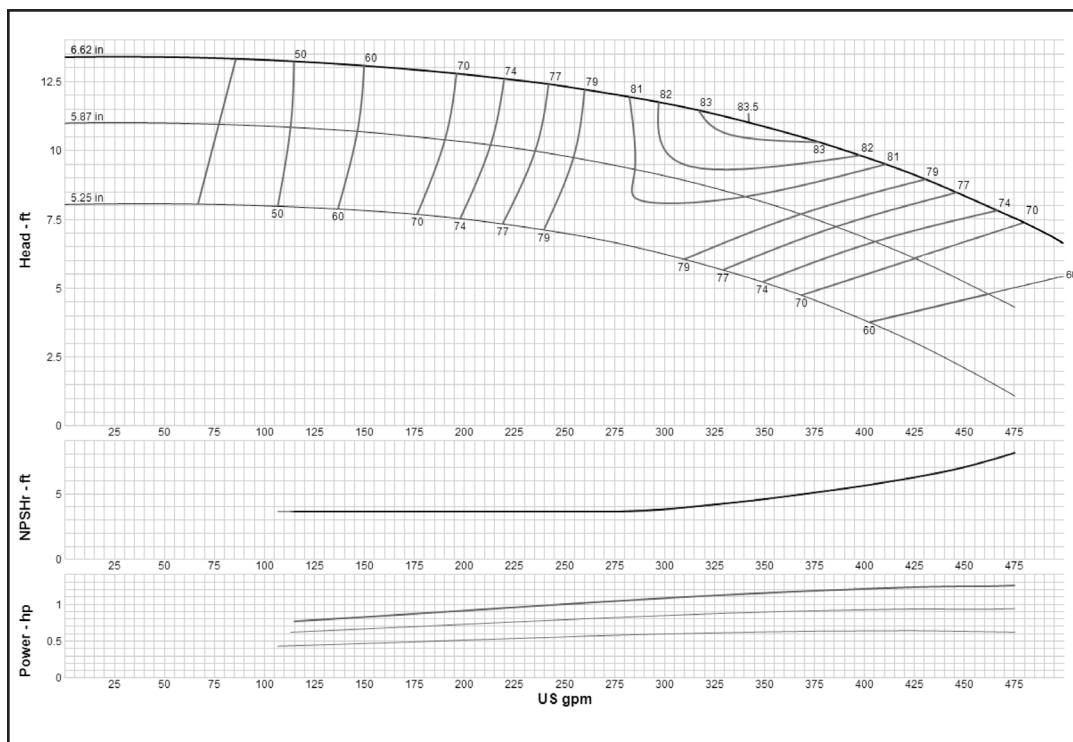
<b>Curve No. E6408REPC2</b>	
<b>Model</b>	<b>8RJLC</b>
<b>RPM</b>	<b>885</b>
EFFICIENCY CORRECTION	
1-STAGE	0
2-STAGE	0
3-STAGE	0
4-STAGE	0
<b>Impeller</b>	<b>OPEN</b>
<b>Ns =</b>	<b>7186</b>
<b>K =</b>	<b>31.5</b>
Bowl O. D.	18.00 in
Bowl Lateral	0.44
Max. PSI	160
Disch size	12", 14"
<b>TURBINE OPERATIONS</b>	
Lubbock, Texas	
BOWL PERFORMANCE CURVE BASED ON PUMPING CLEAR, NON-AERATED WATER. RATED POINT ONLY IS GUARANTEED. CURVES REPRESENT SINGLE STAGE PERFORMANCE BASED ON TEST OF MULTI-STAGE BOWL ASSEMBLY. EFFICIENCY CORRECTION APPLIES TO HEAD, FLOW AND HORSEPOWER FOR LESSER STAGES.	

### MODEL 10MO (Effective September 1, 2017)



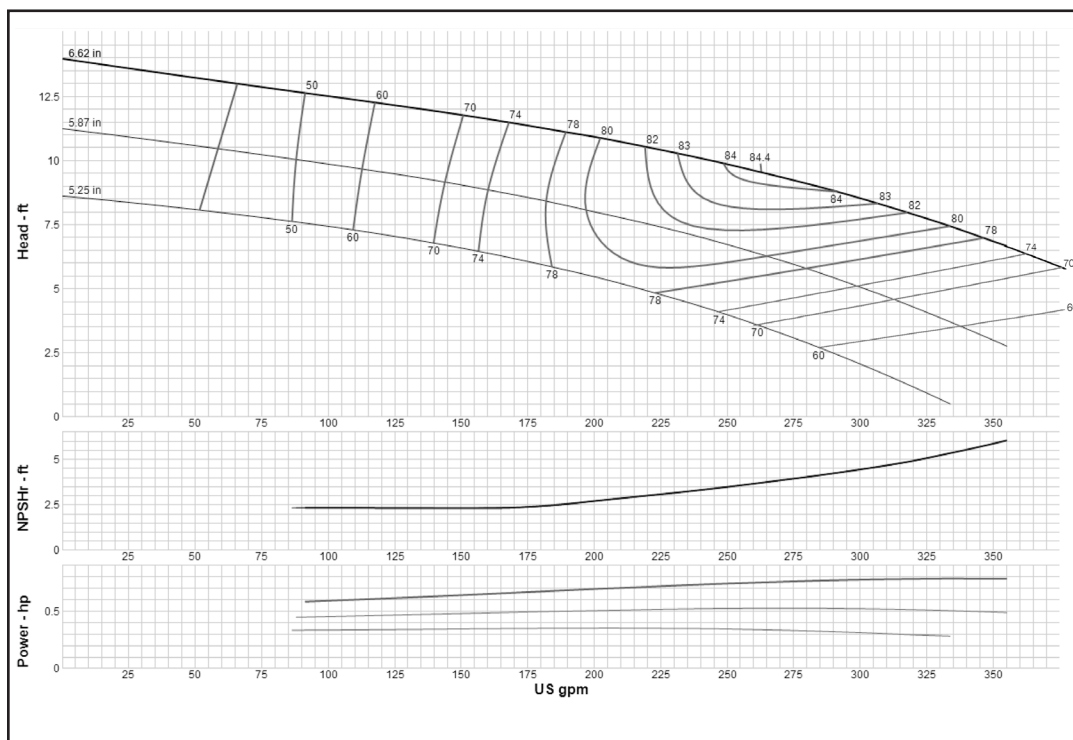
<b>Curve No. E6812MPC1</b>	
<b>Model</b>	<b>10MO</b>
<b>RPM</b>	<b>880</b>
EFFICIENCY CORRECTION	
1-STAGE	0
2-STAGE	N/A
3-STAGE	N/A
4-STAGE	N/A
<b>Impeller</b>	<b>OPEN</b>
<b>Ns =</b>	<b>6663</b>
<b>K =</b>	<b>31.3</b>
Bowl O. D.	18.00 in
Bowl Lateral	0.44
Max. PSI	160
Disch size	12", 14"
<b>TURBINE OPERATIONS</b>	
Lubbock, Texas	
BOWL PERFORMANCE CURVE BASED ON PUMPING CLEAR, NON-AERATED WATER. RATED POINT ONLY IS GUARANTEED. CURVES REPRESENT SINGLE STAGE PERFORMANCE BASED ON TEST OF MULTI-STAGE BOWL ASSEMBLY. EFFICIENCY CORRECTION APPLIES TO HEAD, FLOW AND HORSEPOWER FOR LESSER STAGES.	

### MODEL 10RJHC (Effective September 1, 2017)



<b>Curve No. E6410RCPC1</b>	
<b>Model</b>	<b>10RJHC</b>
<b>RPM</b>	<b>885</b>
EFFICIENCY CORRECTION	
1-STAGE	0
2-STAGE	0
3-STAGE	0
4-STAGE	0
<b>Impeller</b>	<b>OPEN</b>
<b>Ns =</b>	<b>7186</b>
<b>K =</b>	<b>31.5</b>
Bowl O. D.	18.00 in
Bowl Lateral	0.44
Max. PSI	160
Disch size	12", 14"
<b>TURBINE OPERATIONS</b>	
Lubbock, Texas	
BOWL PERFORMANCE CURVE BASED ON PUMPING CLEAR, NON-AERATED WATER. RATED POINT ONLY IS GUARANTEED. CURVES REPRESENT SINGLE STAGE PERFORMANCE BASED ON TEST OF MULTI-STAGE BOWL ASSEMBLY. EFFICIENCY CORRECTION APPLIES TO HEAD, FLOW AND HORSEPOWER FOR LESSER STAGES.	

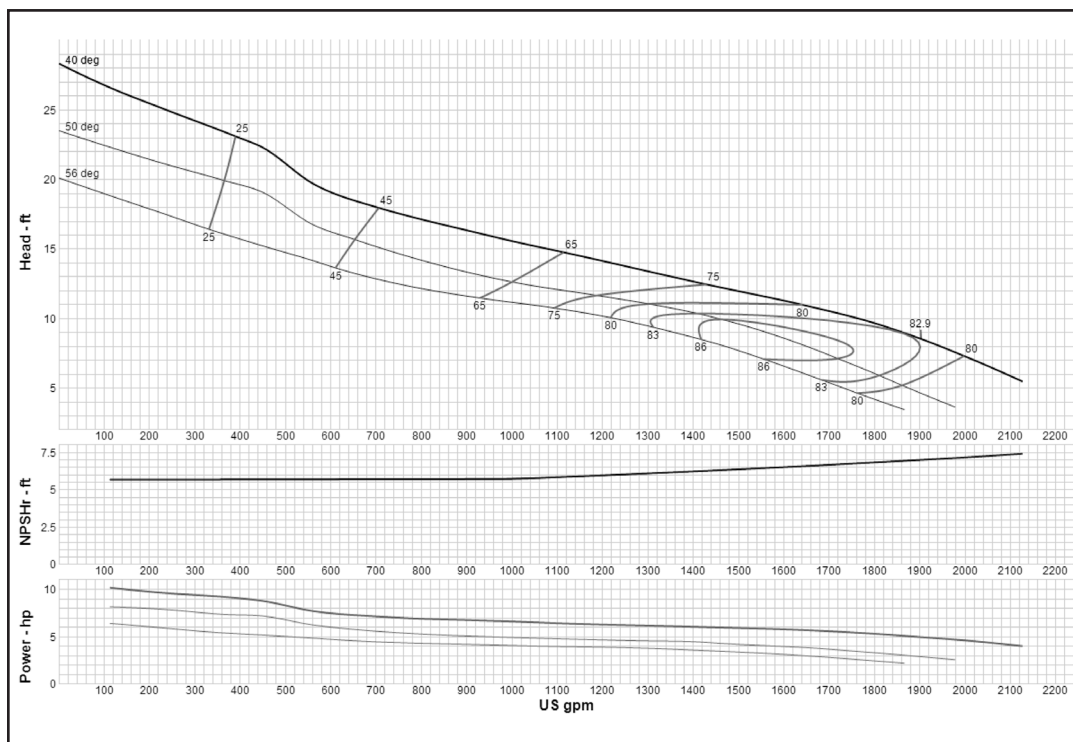
### MODEL 10RJLC (Effective September 1, 2017)



<b>Curve No. E6410REPC1</b>	
<b>Model</b>	<b>10RJLC</b>
<b>RPM</b>	<b>880</b>
EFFICIENCY CORRECTION	
1-STAGE	0
2-STAGE	0
3-STAGE	0
4-STAGE	0
<b>Impeller</b>	<b>OPEN</b>
<b>Ns =</b>	<b>6663</b>
<b>K =</b>	<b>31.3</b>
Bowl O. D.	18.00 in
Bowl Lateral	0.44
Max. PSI	160
Disch size	12", 14"
<b>TURBINE OPERATIONS</b>	
Lubbock, Texas	
BOWL PERFORMANCE CURVE BASED ON PUMPING CLEAR, NON-AERATED WATER. RATED POINT ONLY IS GUARANTEED. CURVES REPRESENT SINGLE STAGE PERFORMANCE BASED ON TEST OF MULTI-STAGE BOWL ASSEMBLY. EFFICIENCY CORRECTION APPLIES TO HEAD, FLOW AND HORSEPOWER FOR LESSER STAGES.	

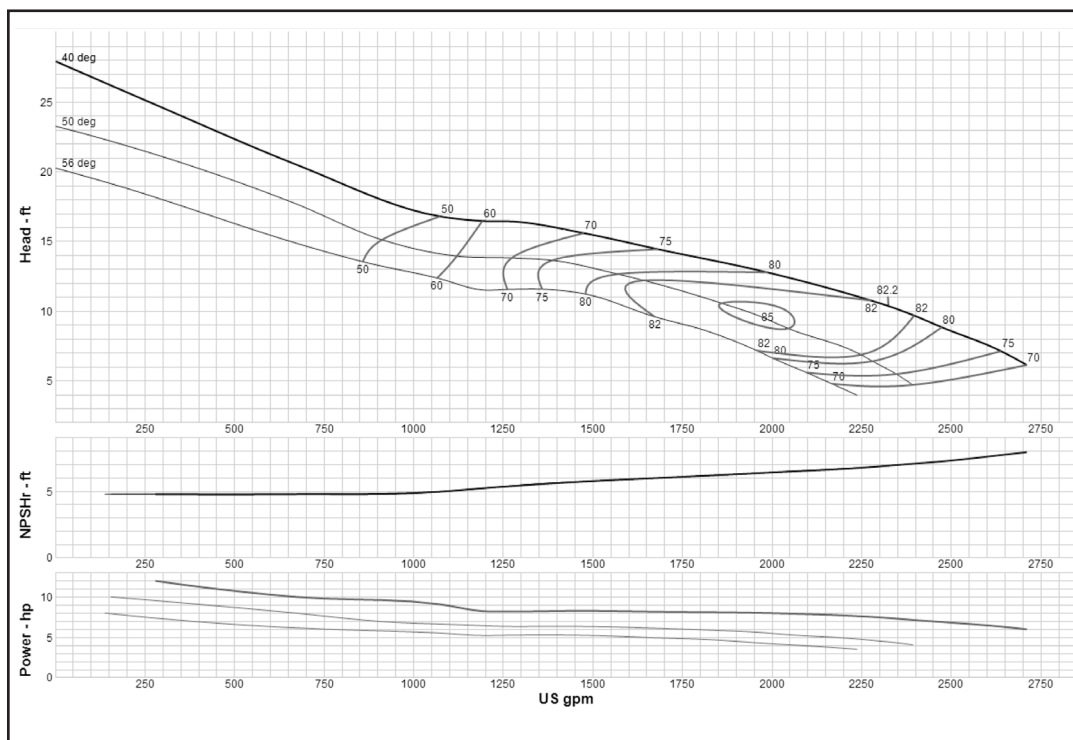
## Turbine

### MODEL 12MLO (Effective September 1, 2017)



<b>Curve No. E6812MBPC1</b>	
<b>Model</b>	<b>12MLO</b>
<b>RPM</b>	<b>880</b>
EFFICIENCY CORRECTION	
1-STAGE	0
2-STAGE	N/A
3-STAGE	N/A
4-STAGE	N/A
<b>Impeller</b>	<b>OPEN</b>
<b>Ns =</b>	<b>7186</b>
<b>K =</b>	<b>31.5</b>
Bowl O. D.	18.00 in
Bowl Lateral	0.44
Max. PSI	160
Disch size	12", 14"
<b>TURBINE OPERATIONS</b>	
Lubbock, Texas	
BOWL PERFORMANCE CURVE BASED ON PUMPING CLEAR, NON-AERATED WATER. RATED POINT ONLY IS GUARANTEED. CURVES REPRESENT SINGLE STAGE PERFORMANCE BASED ON TEST OF MULTI-STAGE BOWL ASSEMBLY. EFFICIENCY CORRECTION APPLIES TO HEAD, FLOW AND HORSEPOWER FOR LESSER STAGES.	

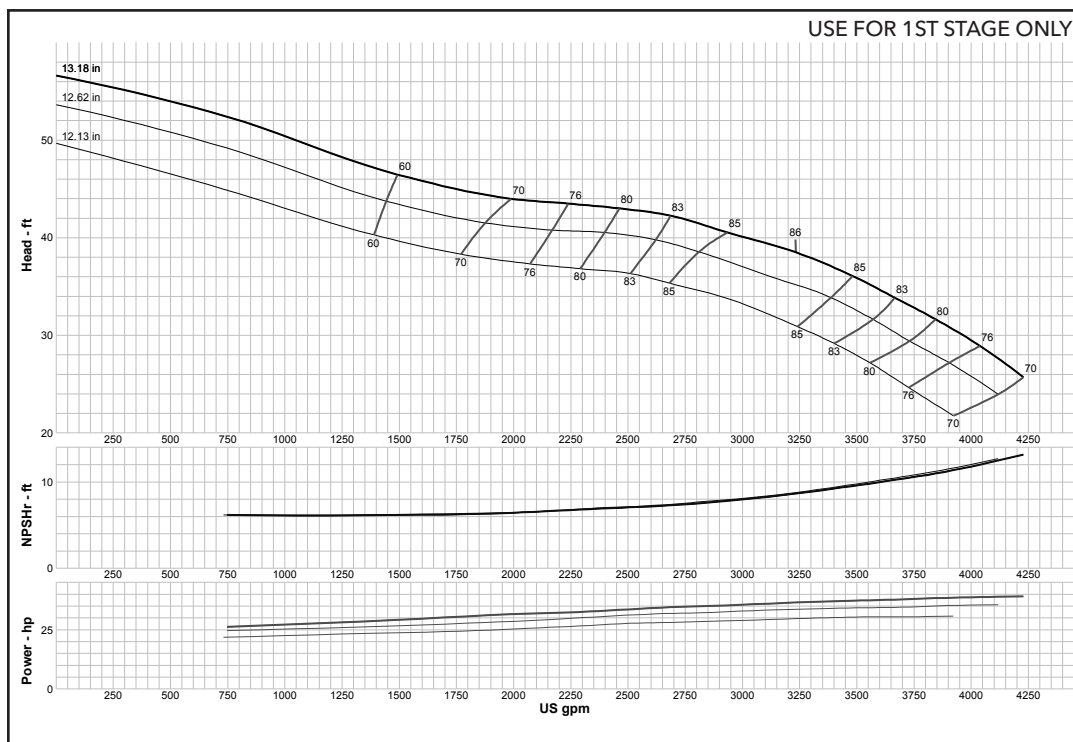
### MODEL 12MMO (Effective September 1, 2017)



<b>Curve No. E6812MPC1</b>	
<b>Model</b>	<b>12MMO</b>
<b>RPM</b>	<b>880</b>
EFFICIENCY CORRECTION	
1-STAGE	0
2-STAGE	N/A
3-STAGE	N/A
4-STAGE	N/A
<b>Impeller</b>	<b>OPEN</b>
<b>Ns =</b>	<b>6663</b>
<b>K =</b>	<b>31.3</b>
Bowl O. D.	18.00 in
Bowl Lateral	0.44
Max. PSI	160
Disch size	12", 14"
<b>TURBINE OPERATIONS</b>	
Lubbock, Texas	
BOWL PERFORMANCE CURVE BASED ON PUMPING CLEAR, NON-AERATED WATER. RATED POINT ONLY IS GUARANTEED. CURVES REPRESENT SINGLE STAGE PERFORMANCE BASED ON TEST OF MULTI-STAGE BOWL ASSEMBLY. EFFICIENCY CORRECTION APPLIES TO HEAD, FLOW AND HORSEPOWER FOR LESSER STAGES.	

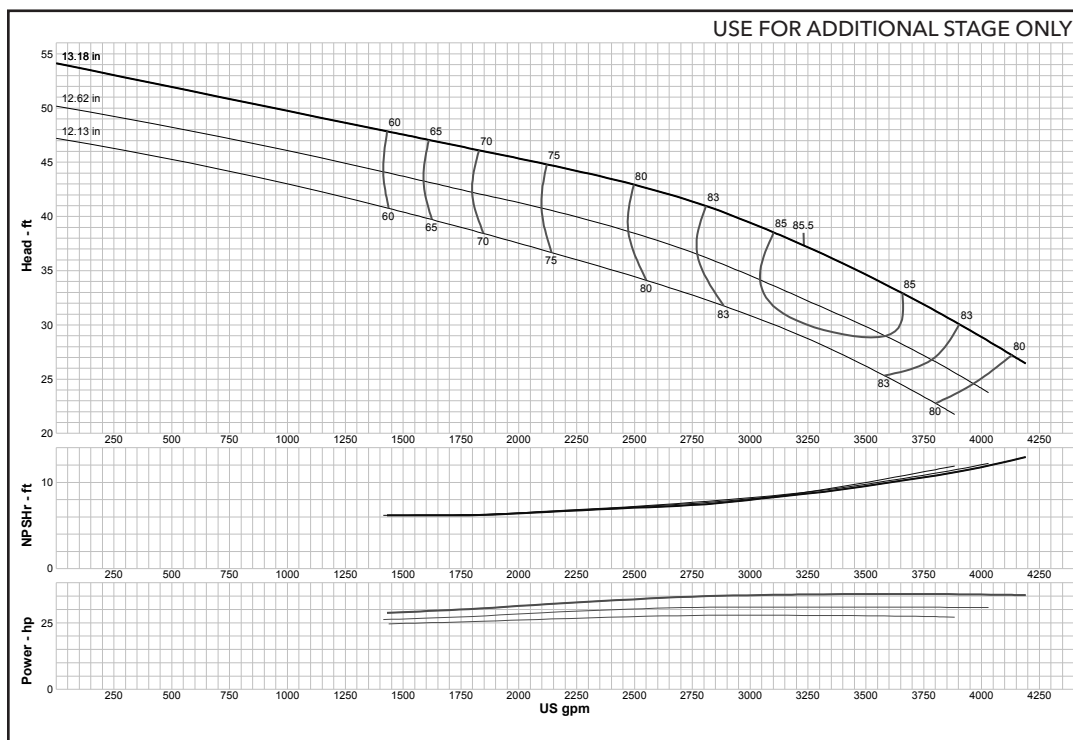
## Turbine

### MODEL 20EHC (Effective July 1, 2014)



<b>Curve No. E6820EAPC1</b>	
<b>Model</b>	<b>20EHC</b>
<b>RPM</b>	<b>880</b>
EFFICIENCY CORRECTION	
1-STAGE	0
2-STAGE	0
3-STAGE	0
4-STAGE	0
<b>Impeller</b>	<b>ENCLOSED</b>
<b>Ns =</b>	<b>3233</b>
<b>K =</b>	<b>36</b>
Bowl O. D.	18.94 in
Bowl Lateral	0.88
Max. PSI	310
Disch size	--
<b>TURBINE OPERATIONS</b>	
Lubbock, Texas	
BOWL PERFORMANCE CURVE BASED ON PUMPING CLEAR, NON-AERATED WATER. RATED POINT ONLY IS GUARANTEED. CURVES REPRESENT SINGLE STAGE PERFORMANCE BASED ON TEST OF MULTI-STAGE BOWL ASSEMBLY. EFFICIENCY CORRECTION APPLIES TO HEAD, FLOW AND HORSEPOWER FOR LESSER STAGES.	

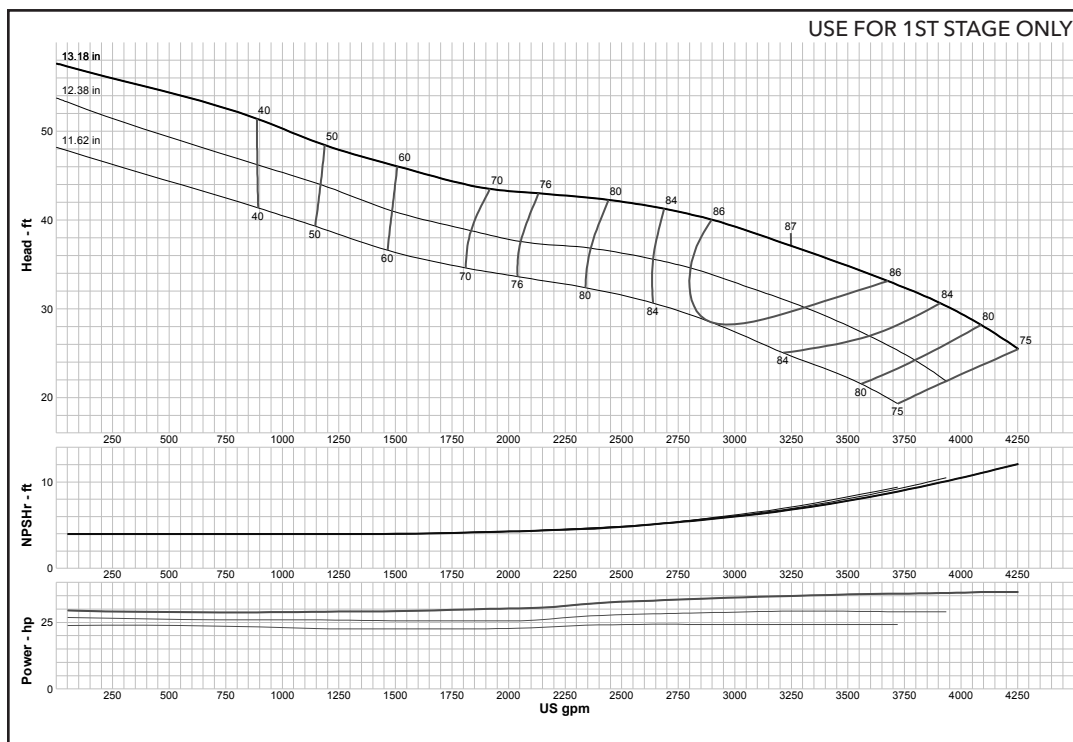
### MODEL 20EHC (Effective July 1, 2014)



<b>Curve No. E6820EAPC1</b>	
<b>Model</b>	<b>20EHC</b>
<b>RPM</b>	<b>880</b>
EFFICIENCY CORRECTION	
1-STAGE	0
2-STAGE	0
3-STAGE	0
4-STAGE	0
<b>Impeller</b>	<b>ENCLOSED</b>
<b>Ns =</b>	<b>3233</b>
<b>K =</b>	<b>36</b>
Bowl O. D.	18.94 in
Bowl Lateral	0.88
Max. PSI	310
Disch size	--
<b>TURBINE OPERATIONS</b>	
Lubbock, Texas	
BOWL PERFORMANCE CURVE BASED ON PUMPING CLEAR, NON-AERATED WATER. RATED POINT ONLY IS GUARANTEED. CURVES REPRESENT SINGLE STAGE PERFORMANCE BASED ON TEST OF MULTI-STAGE BOWL ASSEMBLY. EFFICIENCY CORRECTION APPLIES TO HEAD, FLOW AND HORSEPOWER FOR LESSER STAGES.	

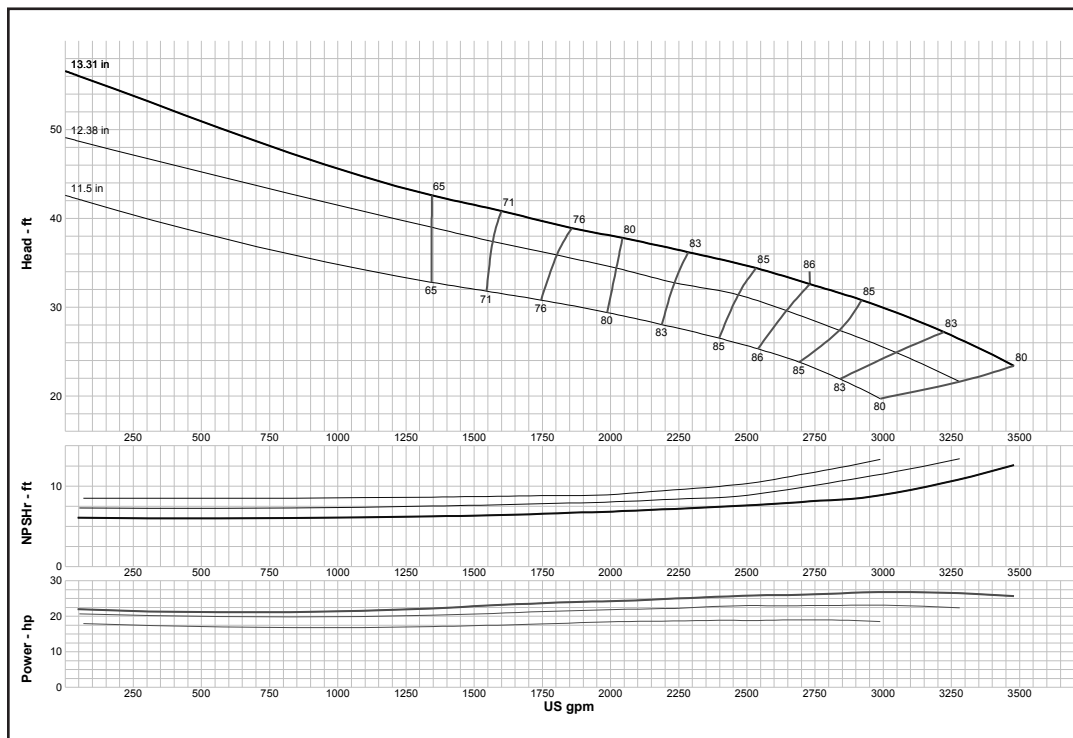
## Turbine

### MODEL 20EHXC (Effective July 1, 2014)



<b>Curve No. E6820ERPC0</b>	
<b>Model</b>	<b>20EHXC</b>
<b>RPM</b>	<b>880</b>
EFFICIENCY CORRECTION	
1-STAGE	0
2-STAGE	0
3-STAGE	0
4-STAGE	0
<b>Impeller</b>	<b>ENCLOSED</b>
<b>Ns =</b>	<b>3329</b>
<b>K =</b>	<b>36</b>
Bowl O. D.	18.94 in
Bowl Lateral	0.88
Max. PSI	380
Disch size	--
<b>TURBINE OPERATIONS</b>	
Lubbock, Texas	
BOWL PERFORMANCE CURVE BASED ON PUMPING CLEAR, NON-AERATED WATER. RATED POINT ONLY IS GUARANTEED. CURVES REPRESENT SINGLE STAGE PERFORMANCE BASED ON TEST OF MULTI-STAGE BOWL ASSEMBLY. EFFICIENCY CORRECTION APPLIES TO HEAD, FLOW AND HORSEPOWER FOR LESSER STAGES.	

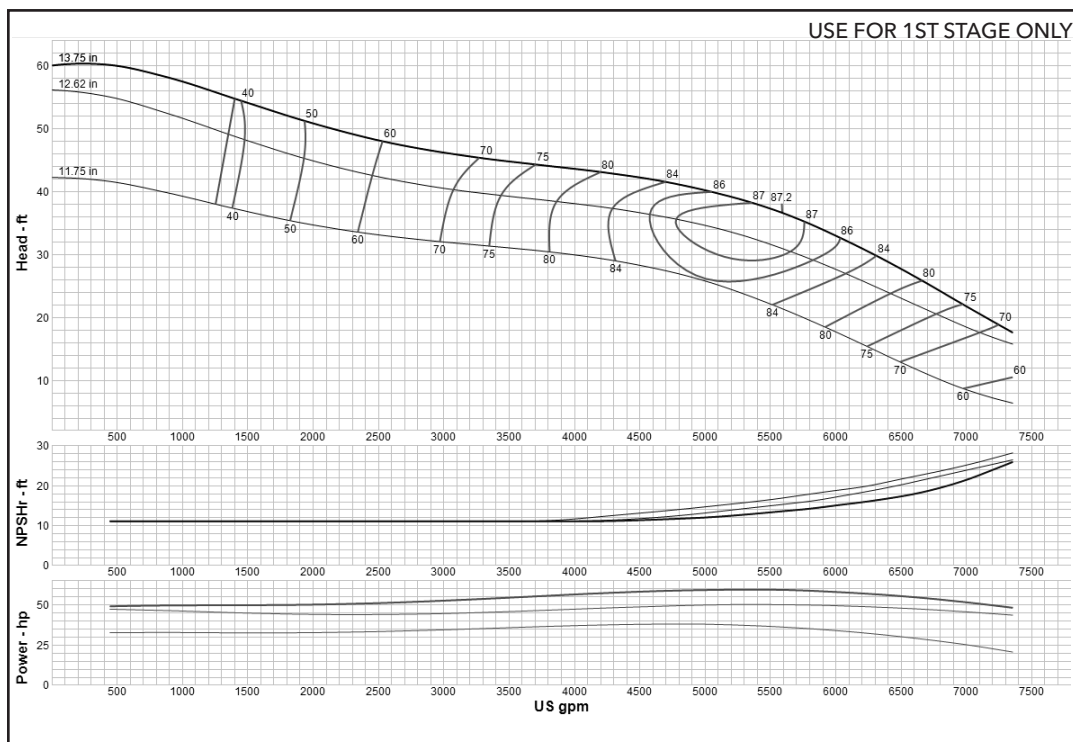
### MODEL 20ELC (Effective July 1, 2014)



<b>Curve No. E6820RDPC3</b>	
<b>Model</b>	<b>20ELC</b>
<b>RPM</b>	<b>880</b>
EFFICIENCY CORRECTION	
1-STAGE	-3
2-STAGE	-1
3-STAGE	0
4-STAGE	0
<b>Impeller</b>	<b>ENCLOSED</b>
<b>Ns =</b>	<b>3371</b>
<b>K =</b>	<b>31</b>
Bowl O. D.	18.94 in
Bowl Lateral	0.88
Max. PSI	310
Disch size	--
<b>TURBINE OPERATIONS</b>	
Lubbock, Texas	
BOWL PERFORMANCE CURVE BASED ON PUMPING CLEAR, NON-AERATED WATER. RATED POINT ONLY IS GUARANTEED. CURVES REPRESENT SINGLE STAGE PERFORMANCE BASED ON TEST OF MULTI-STAGE BOWL ASSEMBLY. EFFICIENCY CORRECTION APPLIES TO HEAD, FLOW AND HORSEPOWER FOR LESSER STAGES.	

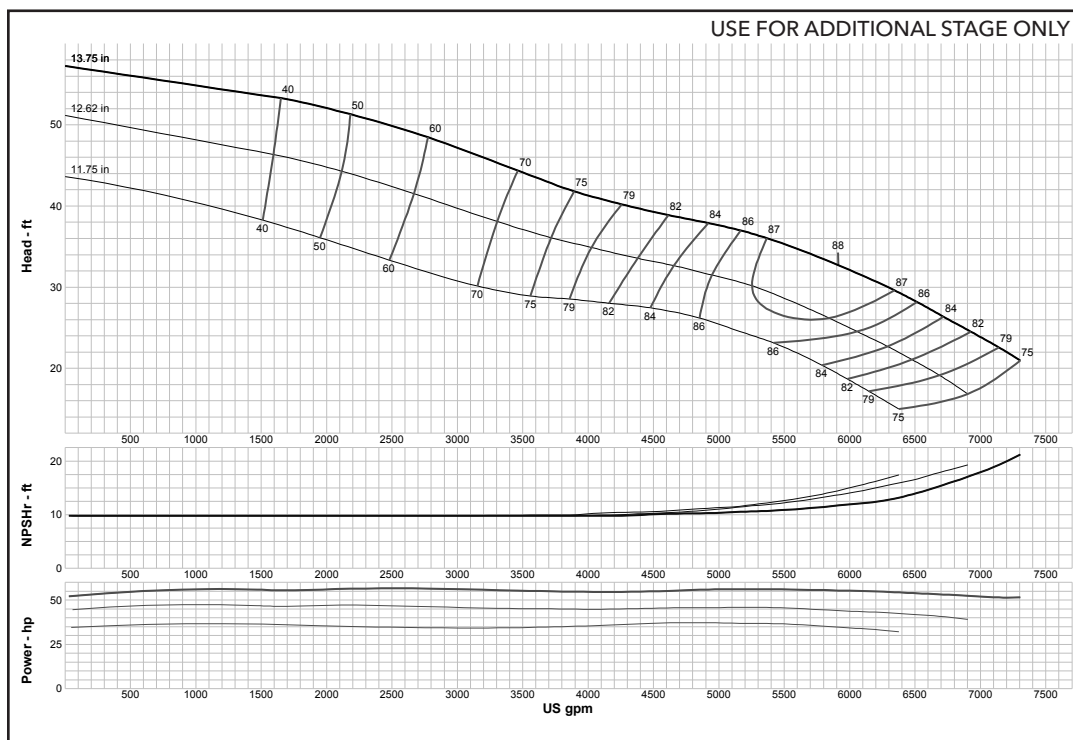


### MODEL 20GHC (Effective September 1, 2017)



<b>Curve No. E6620GAPCI</b>	
<b>Model</b>	<b>20GHC</b>
<b>RPM</b>	<b>885</b>
EFFICIENCY CORRECTION	
1-STAGE	0
2-STAGE	0
3-STAGE	0
4-STAGE	0
<b>Impeller</b>	<b>ENCLOSED</b>
<b>Ns =</b>	<b>4550</b>
<b>K =</b>	<b>41.2</b>
Bowl O. D.	20.75 in
Bowl Lateral	1.41
Max. PSI	270
Disch size	--
<b>TURBINE OPERATIONS</b>	
Lubbock, Texas	
BOWL PERFORMANCE CURVE BASED ON PUMPING CLEAR, NON-AERATED WATER. RATED POINT ONLY IS GUARANTEED. CURVES REPRESENT SINGLE STAGE PERFORMANCE BASED ON TEST OF MULTI-STAGE BOWL ASSEMBLY. EFFICIENCY CORRECTION APPLIES TO HEAD, FLOW AND HORSEPOWER FOR LESSER STAGES.	

### MODEL 20GHC (Effective July 1, 2014)

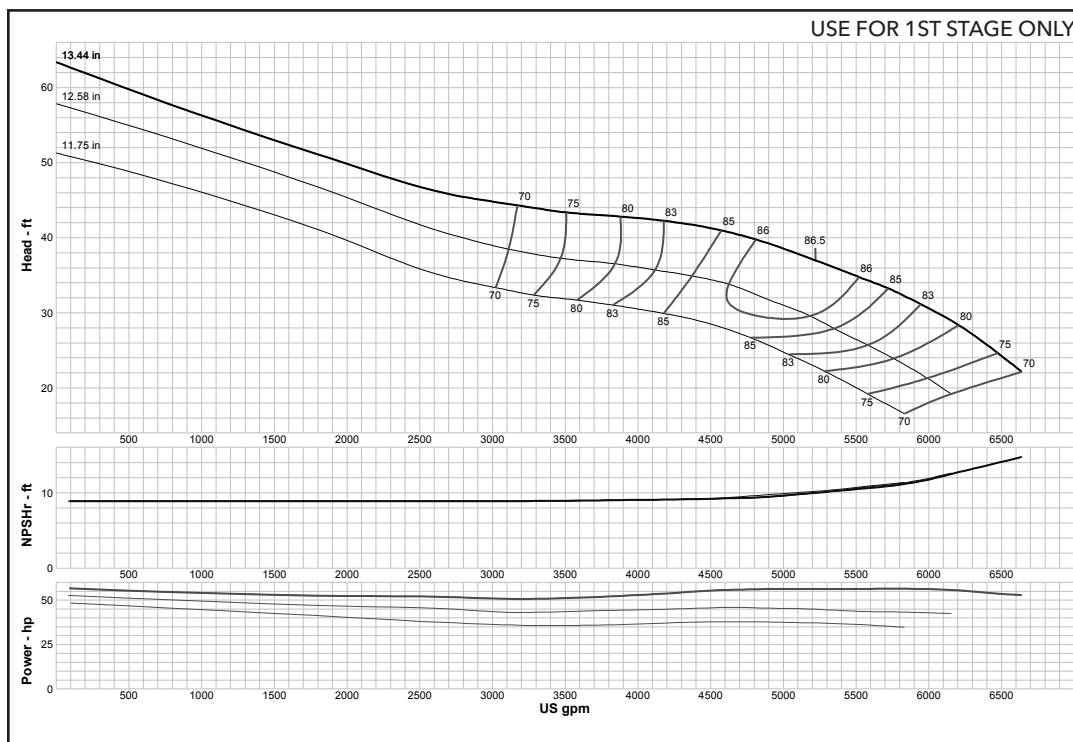


<b>Curve No. E6620GAPCI</b>	
<b>Model</b>	<b>20GHC</b>
<b>RPM</b>	<b>885</b>
EFFICIENCY CORRECTION	
1-STAGE	0
2-STAGE	0
3-STAGE	0
4-STAGE	0
<b>Impeller</b>	<b>ENCLOSED</b>
<b>Ns =</b>	<b>4550</b>
<b>K =</b>	<b>41.2</b>
Bowl O. D.	20.75 in
Bowl Lateral	1.41
Max. PSI	270
Disch size	--
<b>TURBINE OPERATIONS</b>	
Lubbock, Texas	
BOWL PERFORMANCE CURVE BASED ON PUMPING CLEAR, NON-AERATED WATER. RATED POINT ONLY IS GUARANTEED. CURVES REPRESENT SINGLE STAGE PERFORMANCE BASED ON TEST OF MULTI-STAGE BOWL ASSEMBLY. EFFICIENCY CORRECTION APPLIES TO HEAD, FLOW AND HORSEPOWER FOR LESSER STAGES.	



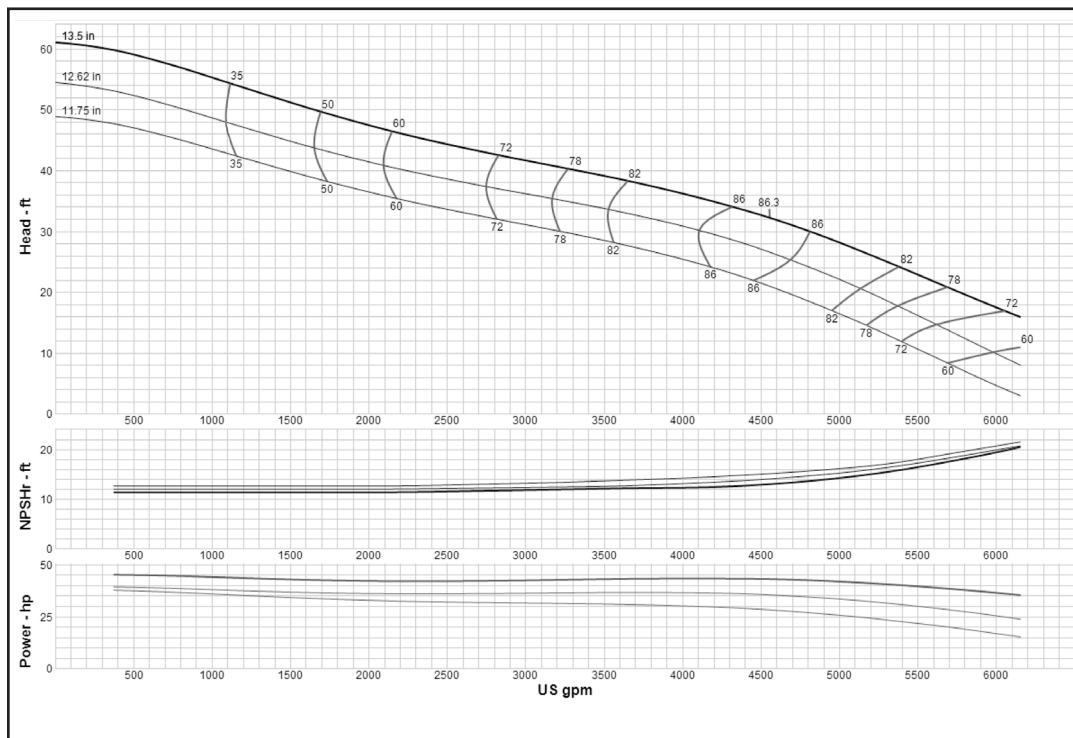
## Turbine

### MODEL 20GHXC (Effective July 1, 2014)



<b>Curve No. E6620GGPFO</b>	
<b>Model</b>	<b>20GHXC</b>
<b>RPM</b>	<b>880</b>
EFFICIENCY CORRECTION	
1-STAGE	0
2-STAGE	0
3-STAGE	0
4-STAGE	0
<b>Impeller</b>	<b>ENCLOSED</b>
<b>Ns =</b>	<b>4255</b>
<b>K =</b>	<b>52</b>
Bowl O. D.	20.75 in
Bowl Lateral	1.41
Max. PSI	300
Disch size	--
<b>TURBINE OPERATIONS</b>	
Lubbock, Texas	
BOWL PERFORMANCE CURVE BASED ON PUMPING CLEAR, NON-AERATED WATER. RATED POINT ONLY IS GUARANTEED. CURVES REPRESENT SINGLE STAGE PERFORMANCE BASED ON TEST OF MULTI-STAGE BOWL ASSEMBLY. EFFICIENCY CORRECTION APPLIES TO HEAD, FLOW AND HORSEPOWER FOR LESSER STAGES.	

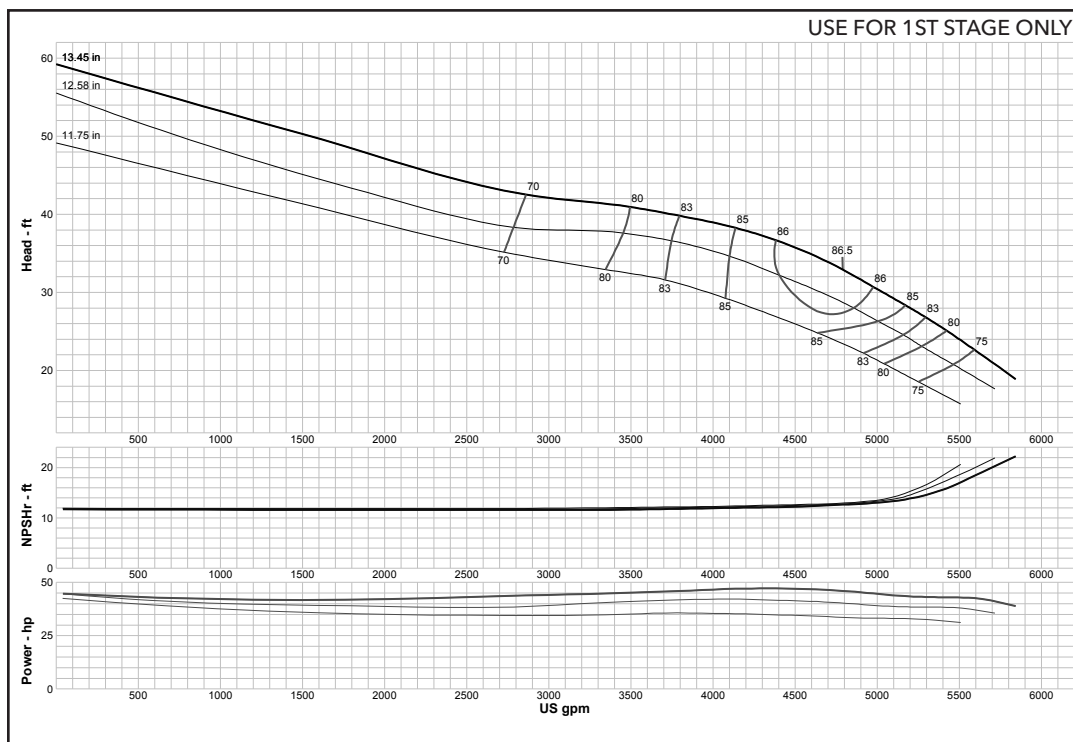
### MODEL 20GLC (Effective September 1, 2017)



<b>Curve No. E6620GCPCO</b>	
<b>Model</b>	<b>20GLC</b>
<b>RPM</b>	<b>885</b>
EFFICIENCY CORRECTION	
1-STAGE	-1
2-STAGE	0
3-STAGE	0
4-STAGE	0
<b>Impeller</b>	<b>ENCLOSED</b>
<b>Ns =</b>	<b>4807</b>
<b>K =</b>	<b>45</b>
Bowl O. D.	20.75 in
Bowl Lateral	1.41
Max. PSI	270
Disch size	--
<b>TURBINE OPERATIONS</b>	
Lubbock, Texas	
BOWL PERFORMANCE CURVE BASED ON PUMPING CLEAR, NON-AERATED WATER. RATED POINT ONLY IS GUARANTEED. CURVES REPRESENT SINGLE STAGE PERFORMANCE BASED ON TEST OF MULTI-STAGE BOWL ASSEMBLY. EFFICIENCY CORRECTION APPLIES TO HEAD, FLOW AND HORSEPOWER FOR LESSER STAGES.	

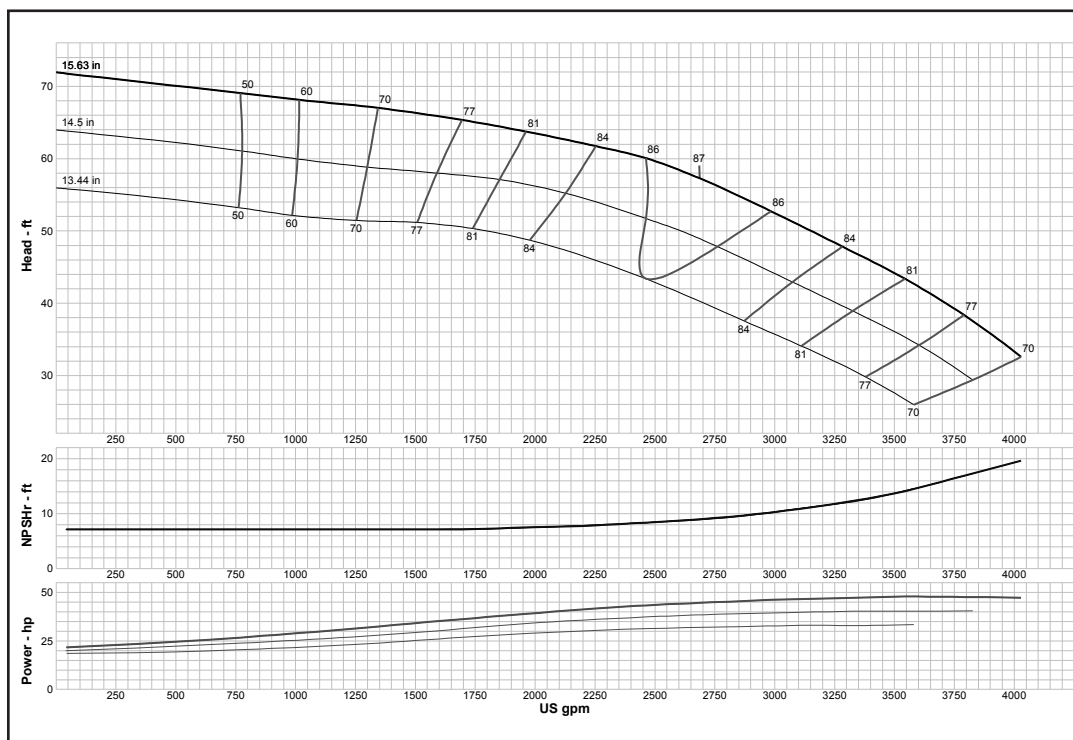
## Turbine

### MODEL 20GLXC (Effective July 1, 2014)



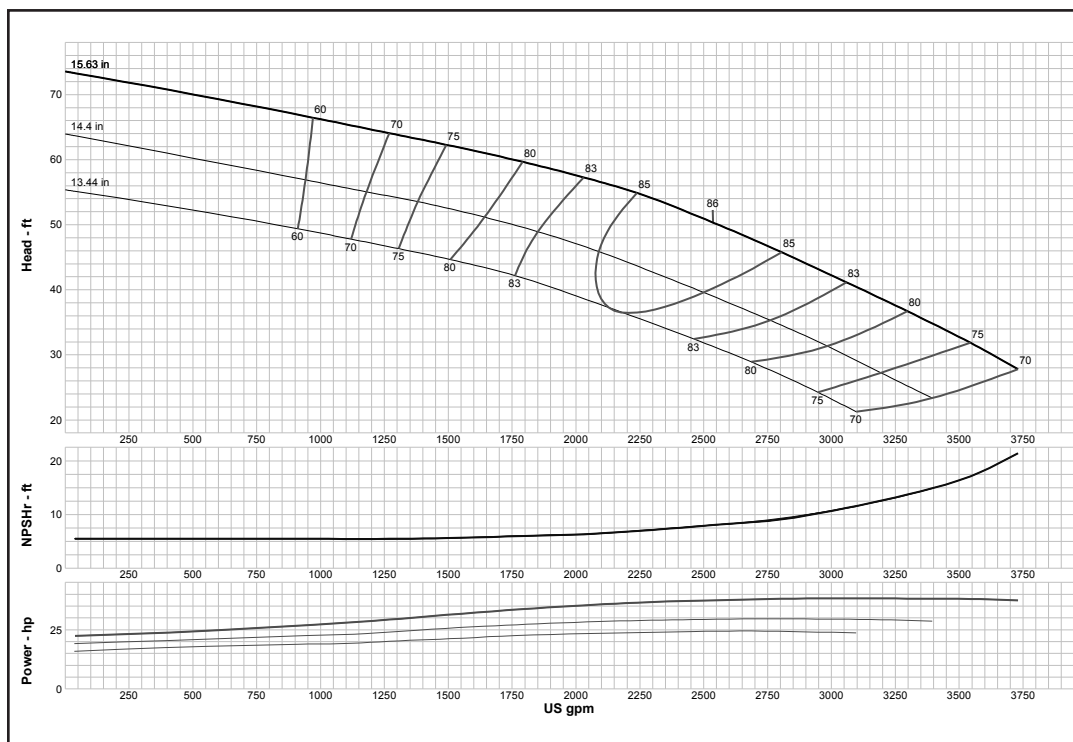
<b>Curve No. E6420GLPFO</b>	
<b>Model</b>	<b>20GLXC</b>
<b>RPM</b>	<b>880</b>
EFFICIENCY CORRECTION	
1-STAGE	0
2-STAGE	0
3-STAGE	0
4-STAGE	0
<b>Impeller</b>	<b>ENCLOSED</b>
<b>Ns =</b>	<b>4345</b>
<b>K =</b>	<b>55.4</b>
Bowl O. D.	20.75 in
Bowl Lateral	1.41
Max. PSI	300
Disch size	--
<b>TURBINE OPERATIONS</b>	
Lubbock, Texas	
BOWL PERFORMANCE CURVE BASED ON PUMPING CLEAR, NON-AERATED WATER. RATED POINT ONLY IS GUARANTEED. CURVES REPRESENT SINGLE STAGE PERFORMANCE BASED ON TEST OF MULTI-STAGE BOWL ASSEMBLY. EFFICIENCY CORRECTION APPLIES TO HEAD, FLOW AND HORSEPOWER FOR LESSER STAGES.	

### MODEL 20RCHC (Effective July 1, 2014)



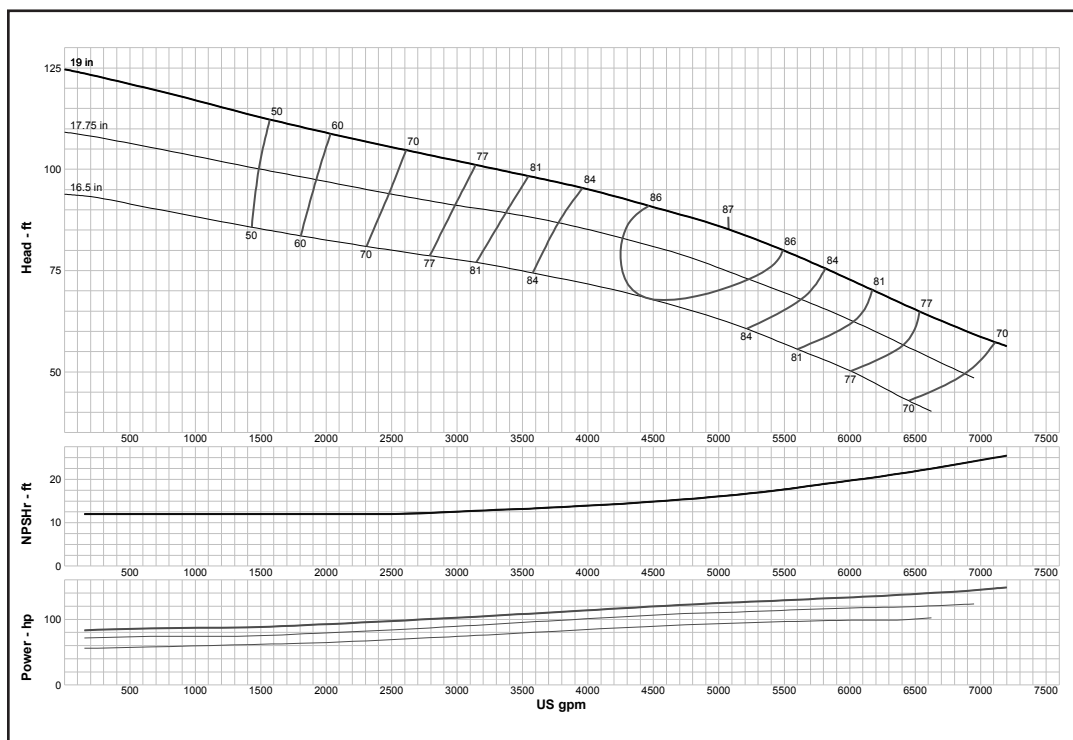
<b>Curve No. E6620CCPC1</b>	
<b>Model</b>	<b>20RCHC</b>
<b>RPM</b>	<b>880</b>
EFFICIENCY CORRECTION	
1-STAGE	-1
2-STAGE	0
3-STAGE	0
4-STAGE	0
<b>Impeller</b>	<b>ENCLOSED</b>
<b>Ns =</b>	<b>2190</b>
<b>K =</b>	<b>24</b>
Bowl O. D.	20.50 in
Bowl Lateral	1.12
Max. PSI	400
Disch size	--
<b>TURBINE OPERATIONS</b>	
Lubbock, Texas	
BOWL PERFORMANCE CURVE BASED ON PUMPING CLEAR, NON-AERATED WATER. RATED POINT ONLY IS GUARANTEED. CURVES REPRESENT SINGLE STAGE PERFORMANCE BASED ON TEST OF MULTI-STAGE BOWL ASSEMBLY. EFFICIENCY CORRECTION APPLIES TO HEAD, FLOW AND HORSEPOWER FOR LESSER STAGES.	

### MODEL 20RCLC (Effective July 1, 2014)



<b>Curve No. E6620CFPC1</b>	
<b>Model</b>	<b>20RCLC</b>
<b>RPM</b>	<b>880</b>
EFFICIENCY CORRECTION	
1-STAGE	-1
2-STAGE	0
3-STAGE	0
4-STAGE	0
<b>Impeller</b>	<b>ENCLOSED</b>
<b>Ns =</b>	<b>2345</b>
<b>K =</b>	<b>24</b>
Bowl O. D.	20.50 in
Bowl Lateral	1.12
Max. PSI	400
Disch size	--
<b>TURBINE OPERATIONS</b>	
Lubbock, Texas	
BOWL PERFORMANCE CURVE BASED ON PUMPING CLEAR, NON-AERATED WATER. RATED POINT ONLY IS GUARANTEED. CURVES REPRESENT SINGLE STAGE PERFORMANCE BASED ON TEST OF MULTI-STAGE BOWL ASSEMBLY. EFFICIENCY CORRECTION APPLIES TO HEAD, FLOW AND HORSEPOWER FOR LESSER STAGES.	

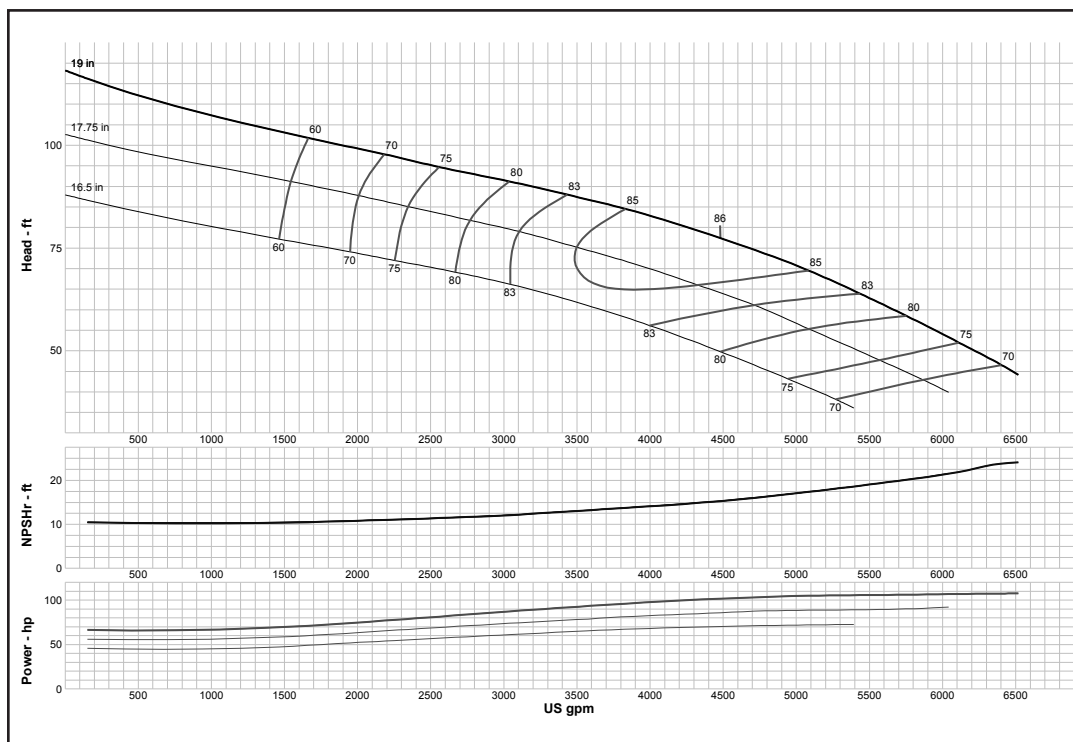
### MODEL 24CHC (Effective July 1, 2014)



<b>Curve No. E6824CCPC1</b>	
<b>Model</b>	<b>24CHC</b>
<b>RPM</b>	<b>880</b>
EFFICIENCY CORRECTION	
1-STAGE	-1.5
2-STAGE	0
3-STAGE	0
4-STAGE	0
<b>Impeller</b>	<b>ENCLOSED</b>
<b>Ns =</b>	<b>2232</b>
<b>K =</b>	<b>37.8</b>
Bowl O. D.	25.00 in
Bowl Lateral	0.87
Max. PSI	270
Disch size	--
<b>TURBINE OPERATIONS</b>	
Lubbock, Texas	
BOWL PERFORMANCE CURVE BASED ON PUMPING CLEAR, NON-AERATED WATER. RATED POINT ONLY IS GUARANTEED. CURVES REPRESENT SINGLE STAGE PERFORMANCE BASED ON TEST OF MULTI-STAGE BOWL ASSEMBLY. EFFICIENCY CORRECTION APPLIES TO HEAD, FLOW AND HORSEPOWER FOR LESSER STAGES.	

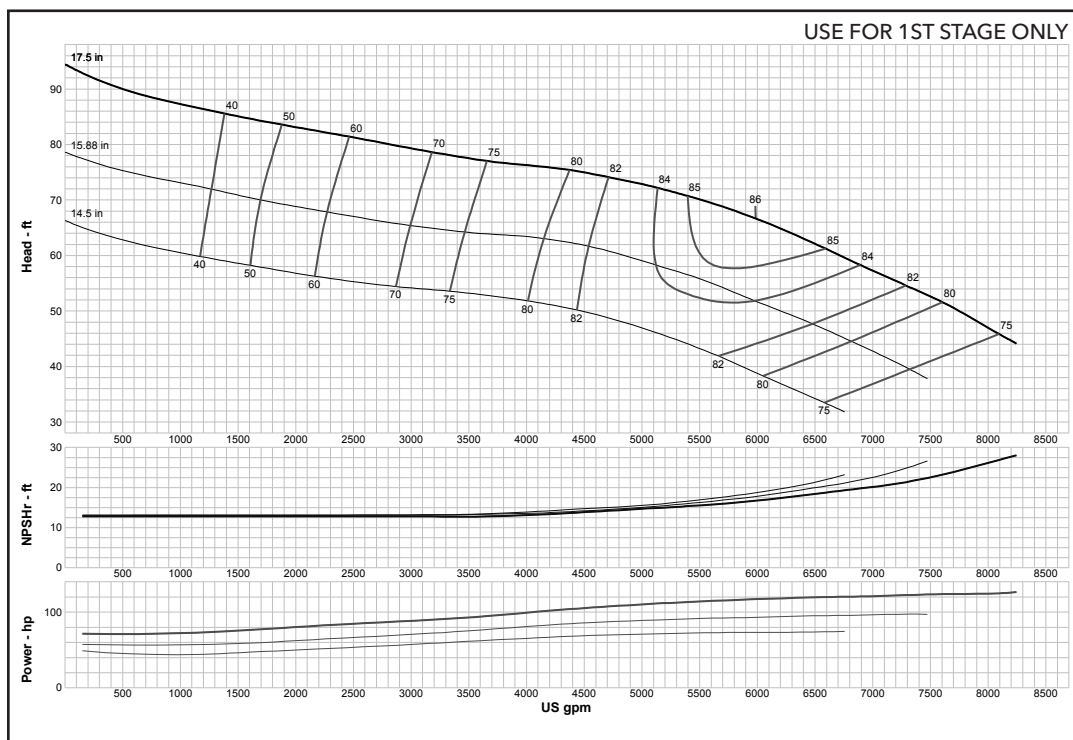
## Turbine

### MODEL 24CLC (Effective July 1, 2014)



<b>Curve No. E6824CFPC1</b>	
<b>Model</b>	<b>24CLC</b>
<b>RPM</b>	<b>880</b>
EFFICIENCY CORRECTION	
1-STAGE	-1.5
2-STAGE	0
3-STAGE	0
4-STAGE	0
<b>Impeller</b>	<b>ENCLOSED</b>
<b>Ns =</b>	<b>2258</b>
<b>K =</b>	<b>43.2</b>
Bowl O. D.	25.00 in
Bowl Lateral	0.87
Max. PSI	270
Disch size	--
<b>TURBINE OPERATIONS</b>	
Lubbock, Texas	
BOWL PERFORMANCE CURVE BASED ON PUMPING CLEAR, NON-AERATED WATER. RATED POINT ONLY IS GUARANTEED. CURVES REPRESENT SINGLE STAGE PERFORMANCE BASED ON TEST OF MULTI-STAGE BOWL ASSEMBLY. EFFICIENCY CORRECTION APPLIES TO HEAD, FLOW AND HORSEPOWER FOR LESSER STAGES.	

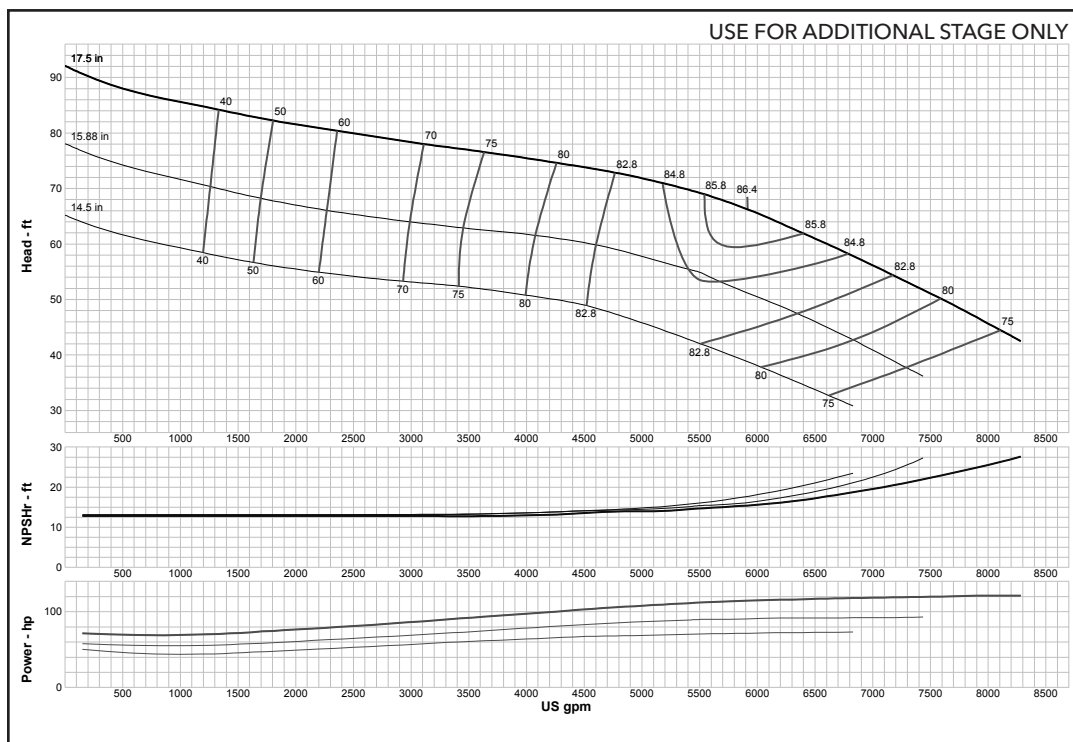
### MODEL 24DMC (Effective July 1, 2014)



<b>Curve No. E6824DJPC0</b>	
<b>Model</b>	<b>24DMC</b>
<b>RPM</b>	<b>880</b>
EFFICIENCY CORRECTION	
1-STAGE	0
2-STAGE	0
3-STAGE	0
4-STAGE	0
<b>Impeller</b>	<b>ENCLOSED</b>
<b>Ns =</b>	<b>2926</b>
<b>K =</b>	<b>39.5</b>
Bowl O. D.	24.25 in
Bowl Lateral	1.12
Max. PSI	290
Disch size	--
<b>TURBINE OPERATIONS</b>	
Lubbock, Texas	
BOWL PERFORMANCE CURVE BASED ON PUMPING CLEAR, NON-AERATED WATER. RATED POINT ONLY IS GUARANTEED. CURVES REPRESENT SINGLE STAGE PERFORMANCE BASED ON TEST OF MULTI-STAGE BOWL ASSEMBLY. EFFICIENCY CORRECTION APPLIES TO HEAD, FLOW AND HORSEPOWER FOR LESSER STAGES.	

## Turbine

### MODEL 24DMC (Effective July 1, 2014)



**Curve No. E6824DJPC0**

**Model 24DMC**

**RPM 880**

EFFICIENCY CORRECTION

1-STAGE	0
2-STAGE	0
3-STAGE	0
4-STAGE	0

**Impeller ENCLOSED**

**Ns = 2926**

**K = 39.5**

Bowl O. D. 24.25 in

Bowl Lateral 1.12

Max. PSI 290

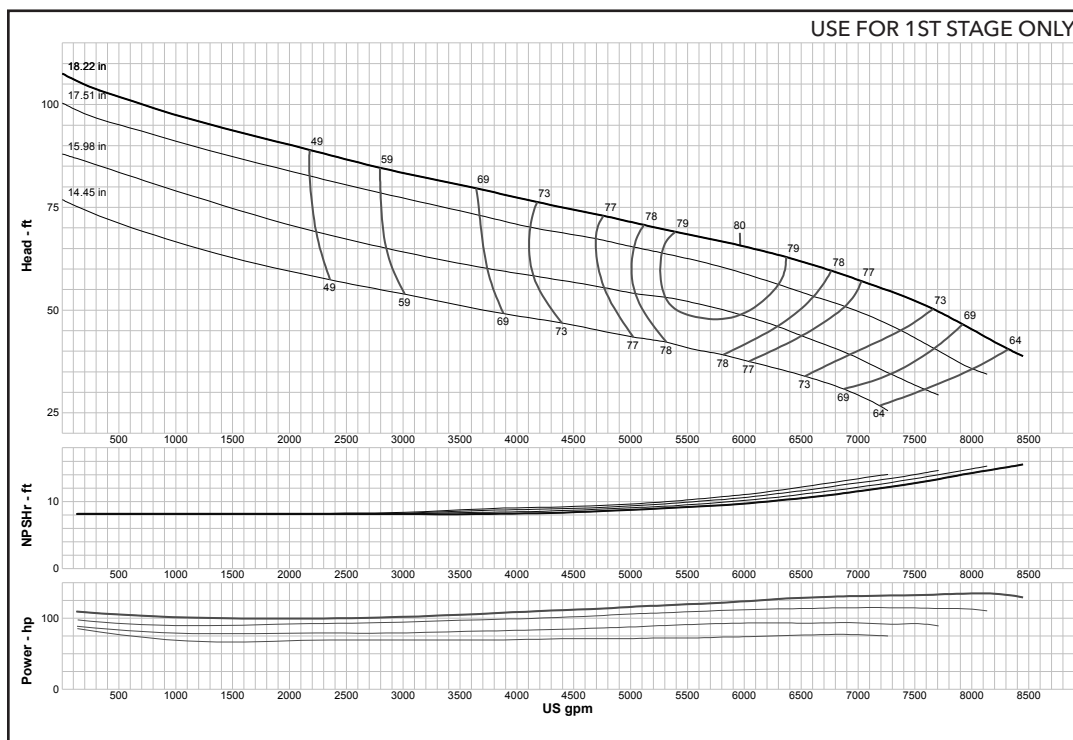
Disch size --

**TURBINE OPERATIONS**

Lubbock, Texas

BOWL PERFORMANCE CURVE BASED ON PUMPING CLEAR, NON-AERATED WATER. RATED POINT ONLY IS GUARANTEED. CURVES REPRESENT SINGLE STAGE PERFORMANCE BASED ON TEST OF MULTI-STAGE BOWL ASSEMBLY. EFFICIENCY CORRECTION APPLIES TO HEAD, FLOW AND HORSEPOWER FOR LESSER STAGES.

### MODEL 24DXC (Effective July 1, 2014)



**Curve No. E01033F**

**Model 24DXC**

**RPM 885**

EFFICIENCY CORRECTION

1-STAGE	0
2-STAGE	0
3-STAGE	0
4-STAGE	0

**Impeller ENCLOSED**

**Ns = 2912**

**K = 59.2**

Bowl O. D. 24.25 in

Bowl Lateral 0.62

Max. PSI 256

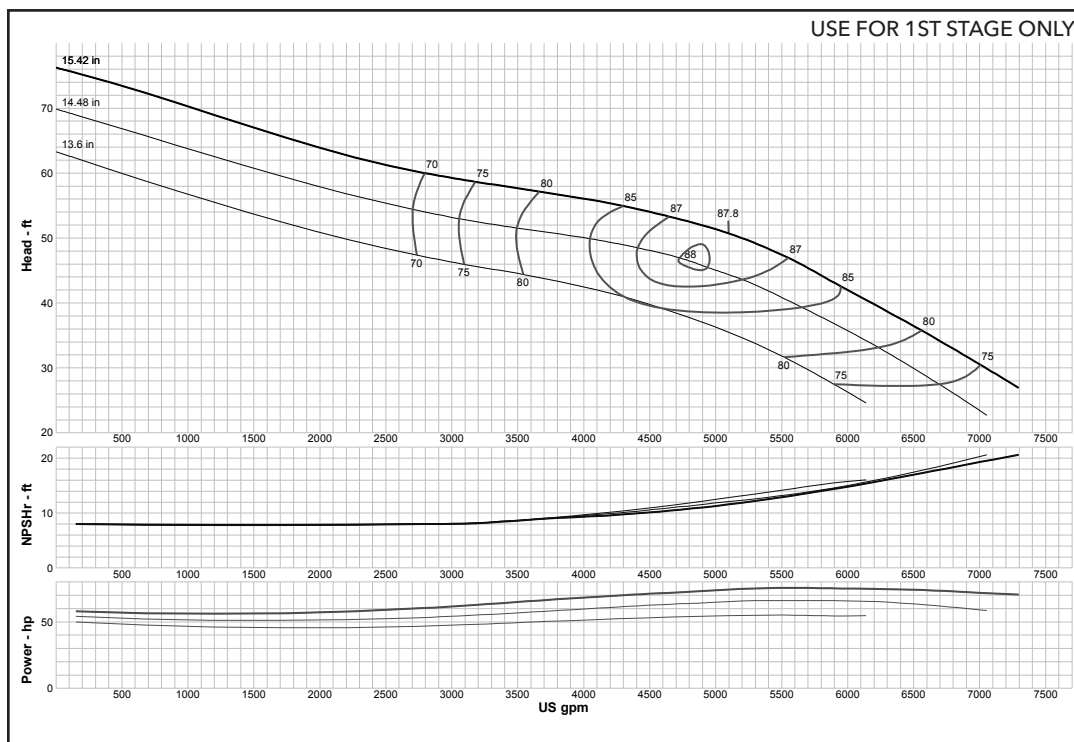
Disch size --

**TURBINE OPERATIONS**

Lubbock, Texas

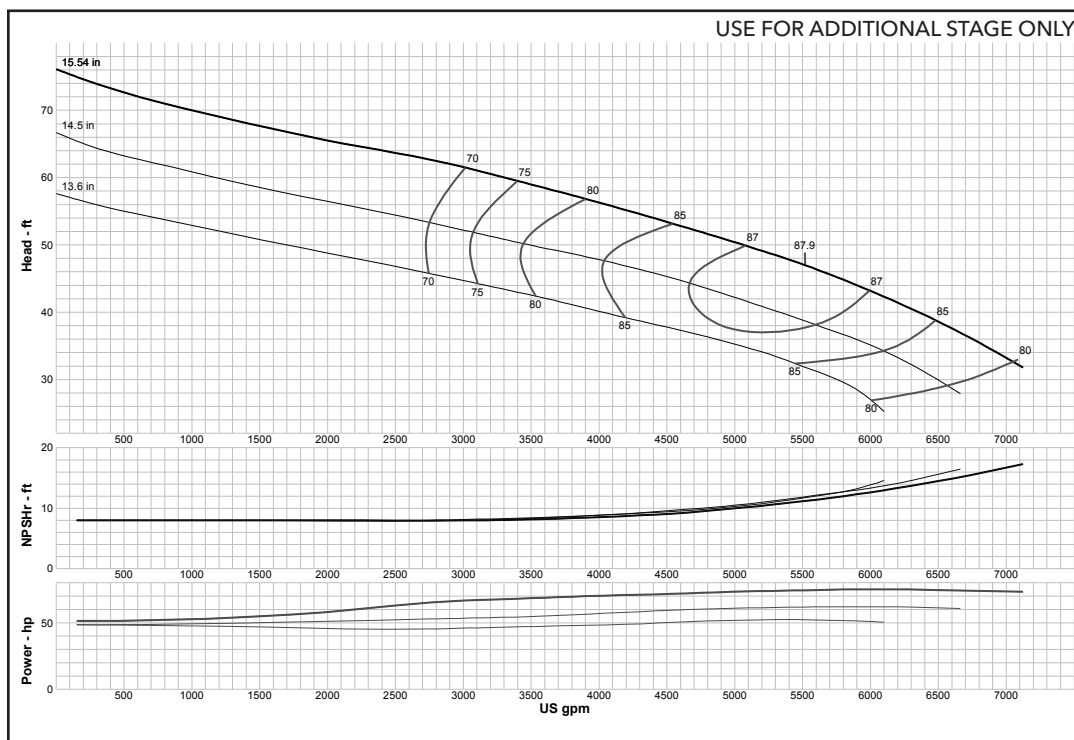
BOWL PERFORMANCE CURVE BASED ON PUMPING CLEAR, NON-AERATED WATER. RATED POINT ONLY IS GUARANTEED. CURVES REPRESENT SINGLE STAGE PERFORMANCE BASED ON TEST OF MULTI-STAGE BOWL ASSEMBLY. EFFICIENCY CORRECTION APPLIES TO HEAD, FLOW AND HORSEPOWER FOR LESSER STAGES.

### MODEL 24EHC (Effective July 1, 2014)



<b>Curve No. E6824EBPC1</b>	
<b>Model</b>	<b>24EHC</b>
<b>RPM</b>	<b>880</b>
EFFICIENCY CORRECTION	
1-STAGE	0
2-STAGE	0
3-STAGE	0
4-STAGE	0
<b>Impeller</b>	<b>ENCLOSED</b>
<b>Ns =</b>	<b>3297</b>
<b>K =</b>	<b>49.3</b>
Bowl O. D.	22.25 in
Bowl Lateral	0.87
Max. PSI	260
Disch size	--
<b>TURBINE OPERATIONS</b>	
Lubbock, Texas	
BOWL PERFORMANCE CURVE BASED ON PUMPING CLEAR, NON-AERATED WATER. RATED POINT ONLY IS GUARANTEED. CURVES REPRESENT SINGLE STAGE PERFORMANCE BASED ON TEST OF MULTI-STAGE BOWL ASSEMBLY. EFFICIENCY CORRECTION APPLIES TO HEAD, FLOW AND HORSEPOWER FOR LESSER STAGES.	

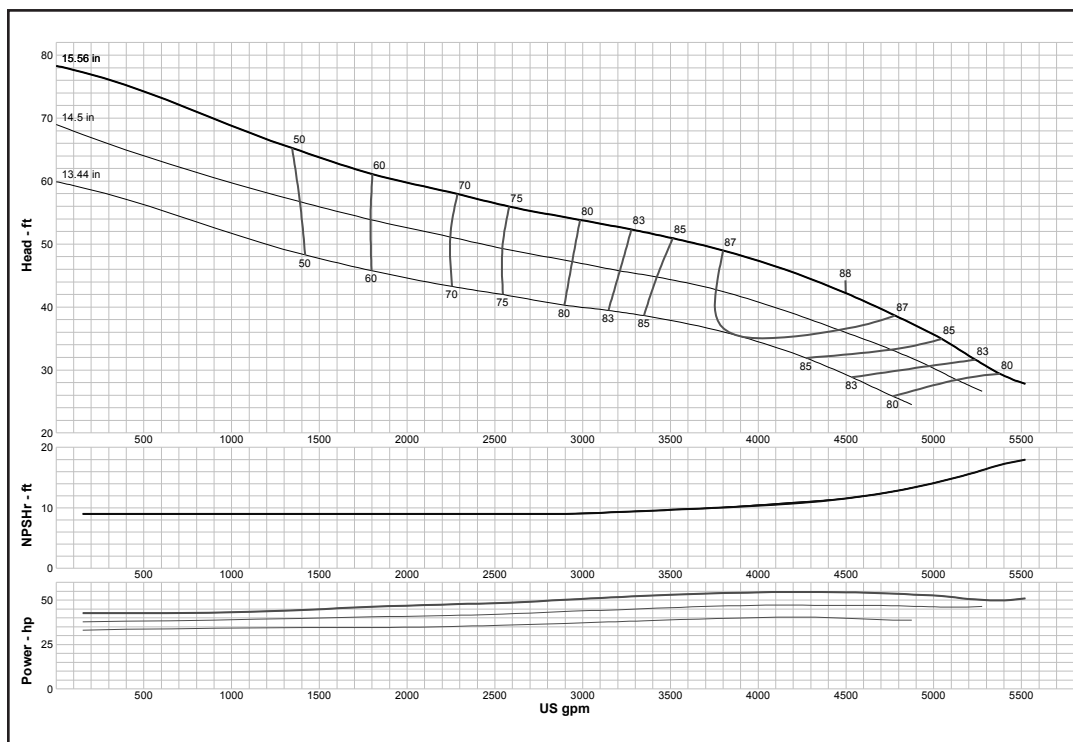
### MODEL 24EHC (Effective July 1, 2014)



<b>Curve No. E6824EBPC1</b>	
<b>Model</b>	<b>24EHC</b>
<b>RPM</b>	<b>880</b>
EFFICIENCY CORRECTION	
1-STAGE	0
2-STAGE	0
3-STAGE	0
4-STAGE	0
<b>Impeller</b>	<b>ENCLOSED</b>
<b>Ns =</b>	<b>3297</b>
<b>K =</b>	<b>49.3</b>
Bowl O. D.	22.25 in
Bowl Lateral	0.87
Max. PSI	260
Disch size	--
<b>TURBINE OPERATIONS</b>	
Lubbock, Texas	
BOWL PERFORMANCE CURVE BASED ON PUMPING CLEAR, NON-AERATED WATER. RATED POINT ONLY IS GUARANTEED. CURVES REPRESENT SINGLE STAGE PERFORMANCE BASED ON TEST OF MULTI-STAGE BOWL ASSEMBLY. EFFICIENCY CORRECTION APPLIES TO HEAD, FLOW AND HORSEPOWER FOR LESSER STAGES.	

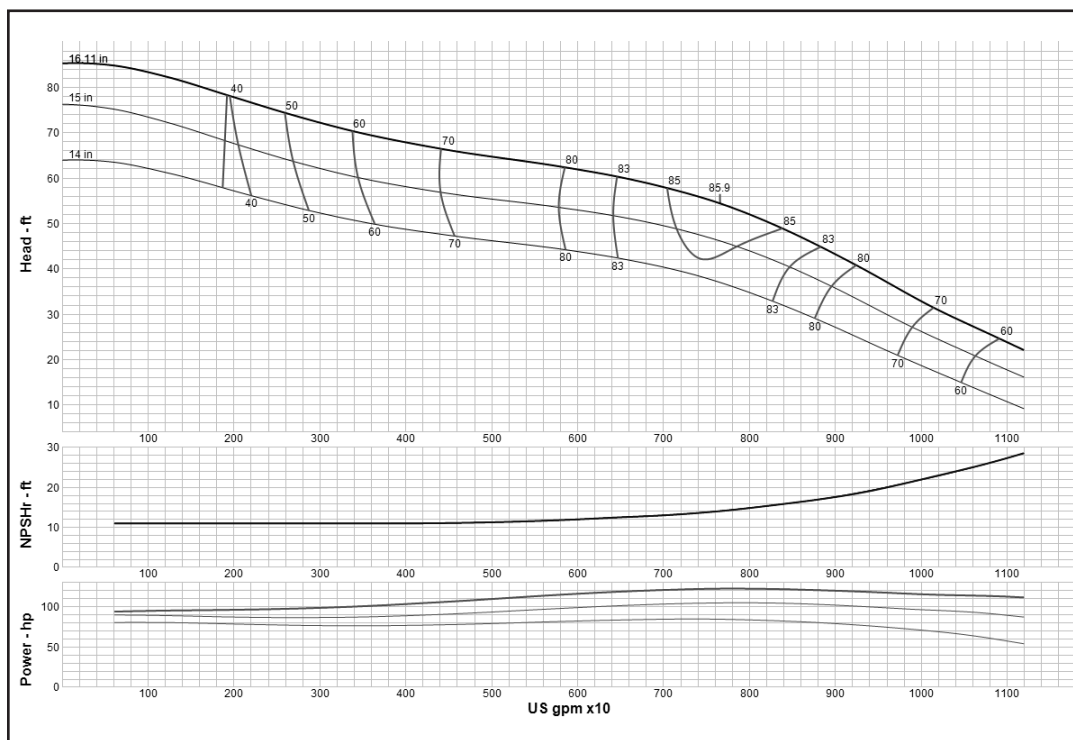
## Turbine

### MODEL 24ELC (Effective July 1, 2014)



<b>Curve No. E6824EDPC2</b>	
<b>Model</b>	<b>24ELC</b>
<b>RPM</b>	<b>880</b>
EFFICIENCY CORRECTION	
1-STAGE	0
2-STAGE	0
3-STAGE	0
4-STAGE	0
<b>Impeller</b>	<b>ENCLOSED</b>
<b>Ns =</b>	<b>3538</b>
<b>K =</b>	<b>42</b>
Bowl O. D.	22.25 in
Bowl Lateral	0.87
Max. PSI	260
Disch size	--
<b>TURBINE OPERATIONS</b>	
Lubbock, Texas	
BOWL PERFORMANCE CURVE BASED ON PUMPING CLEAR, NON-AERATED WATER. RATED POINT ONLY IS GUARANTEED. CURVES REPRESENT SINGLE STAGE PERFORMANCE BASED ON TEST OF MULTI-STAGE BOWL ASSEMBLY. EFFICIENCY CORRECTION APPLIES TO HEAD, FLOW AND HORSEPOWER FOR LESSER STAGES.	

### MODEL 24FHC (Effective September 1, 2017)

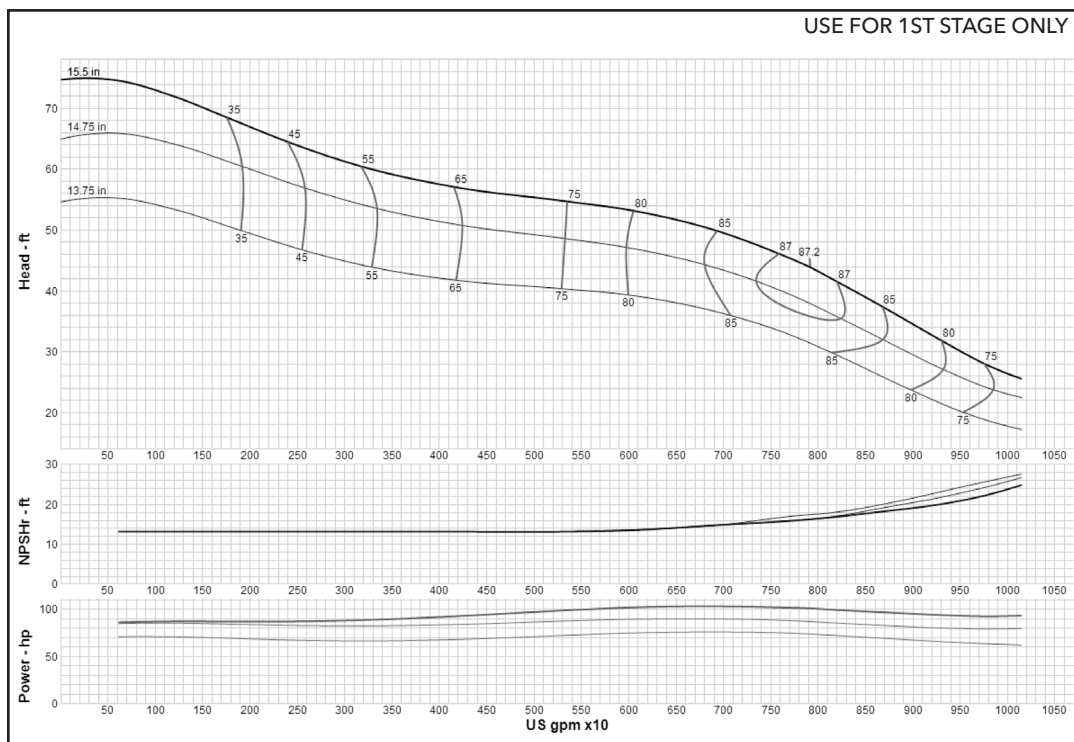


<b>Curve No. E6824FAPC2</b>	
<b>Model</b>	<b>24FHC</b>
<b>RPM</b>	<b>880</b>
EFFICIENCY CORRECTION	
1-STAGE	-0.5
2-STAGE	0
3-STAGE	0
4-STAGE	0
<b>Impeller</b>	<b>ENCLOSED</b>
<b>Ns =</b>	<b>4270</b>
<b>K =</b>	<b>31</b>
Bowl O. D.	24.25 in
Bowl Lateral	0.87
Max. PSI	320
Disch size	--
<b>TURBINE OPERATIONS</b>	
Lubbock, Texas	
BOWL PERFORMANCE CURVE BASED ON PUMPING CLEAR, NON-AERATED WATER. RATED POINT ONLY IS GUARANTEED. CURVES REPRESENT SINGLE STAGE PERFORMANCE BASED ON TEST OF MULTI-STAGE BOWL ASSEMBLY. EFFICIENCY CORRECTION APPLIES TO HEAD, FLOW AND HORSEPOWER FOR LESSER STAGES.	



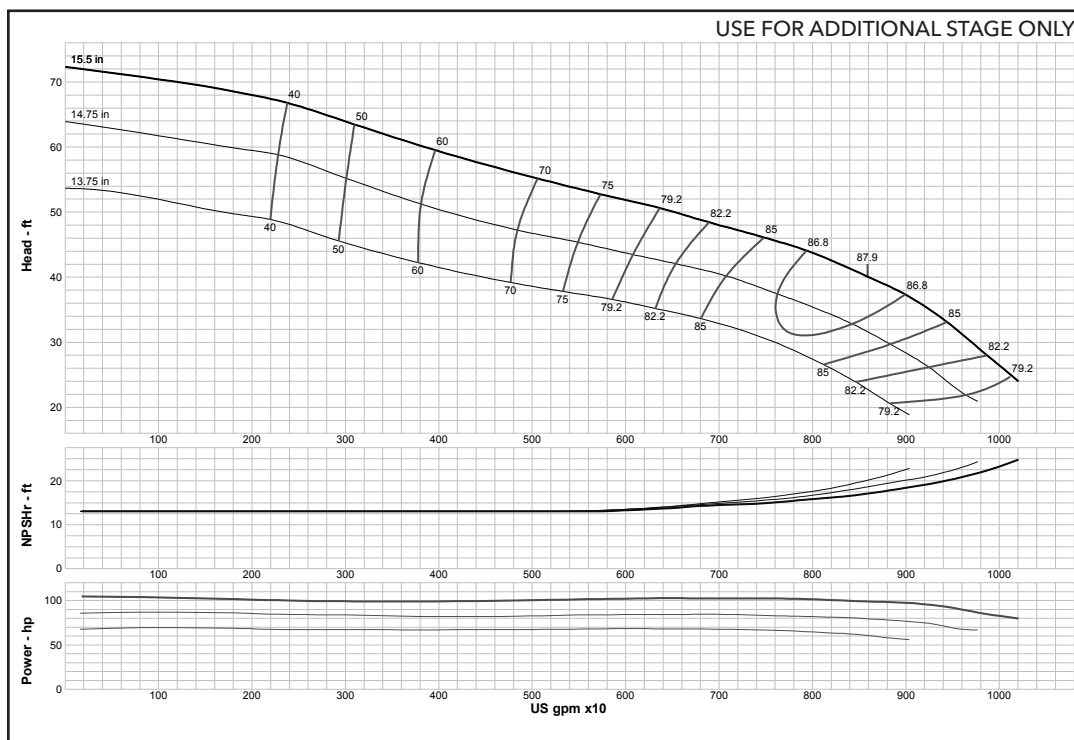
## Turbine

### MODEL 24GHC (Effective September 1, 2017)



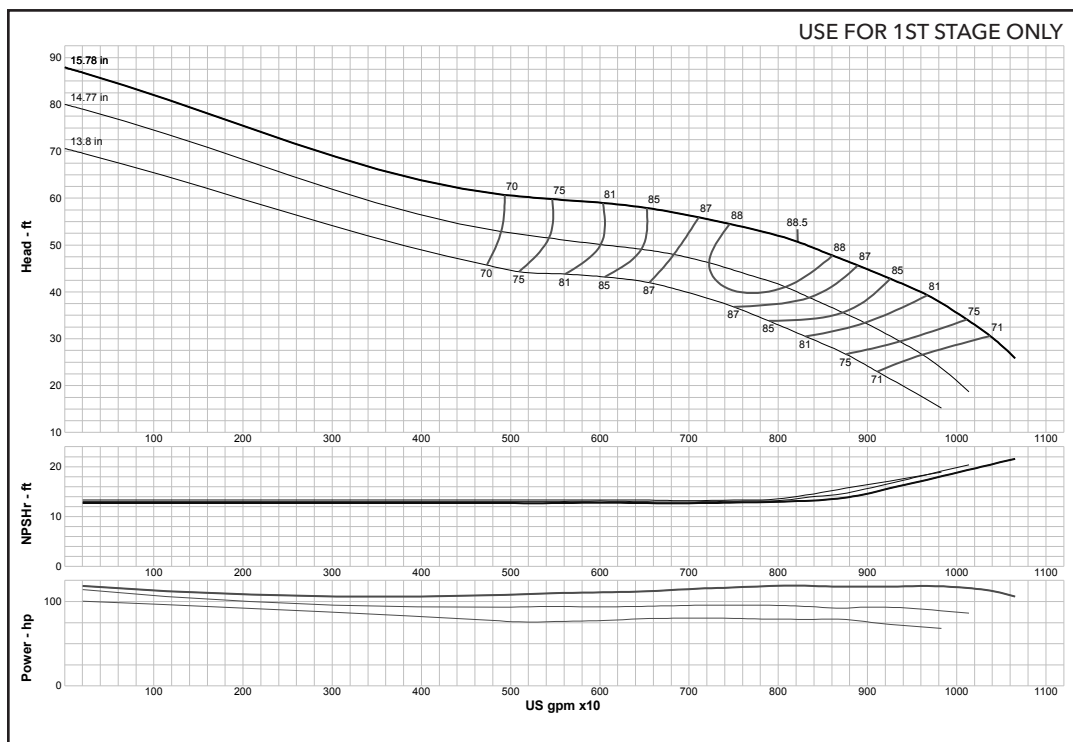
<b>Curve No. E6824GAPP1</b>	
<b>Model</b>	<b>24GHC</b>
<b>RPM</b>	<b>880</b>
EFFICIENCY CORRECTION	
1-STAGE	0
2-STAGE	0
3-STAGE	0
4-STAGE	0
<b>Impeller</b>	<b>ENCLOSED</b>
<b>Ns =</b>	<b>4774</b>
<b>K =</b>	<b>60</b>
Bowl O. D.	24.25 in
Bowl Lateral	1.62
Max. PSI	250
Disch size	--
<b>TURBINE OPERATIONS</b>	
Lubbock, Texas	
BOWL PERFORMANCE CURVE BASED ON PUMPING CLEAR, NON-AERATED WATER. RATED POINT ONLY IS GUARANTEED. CURVES REPRESENT SINGLE STAGE PERFORMANCE BASED ON TEST OF MULTI-STAGE BOWL ASSEMBLY. EFFICIENCY CORRECTION APPLIES TO HEAD, FLOW AND HORSEPOWER FOR LESSER STAGES.	

### MODEL 24GHC (Effective July 1, 2014)



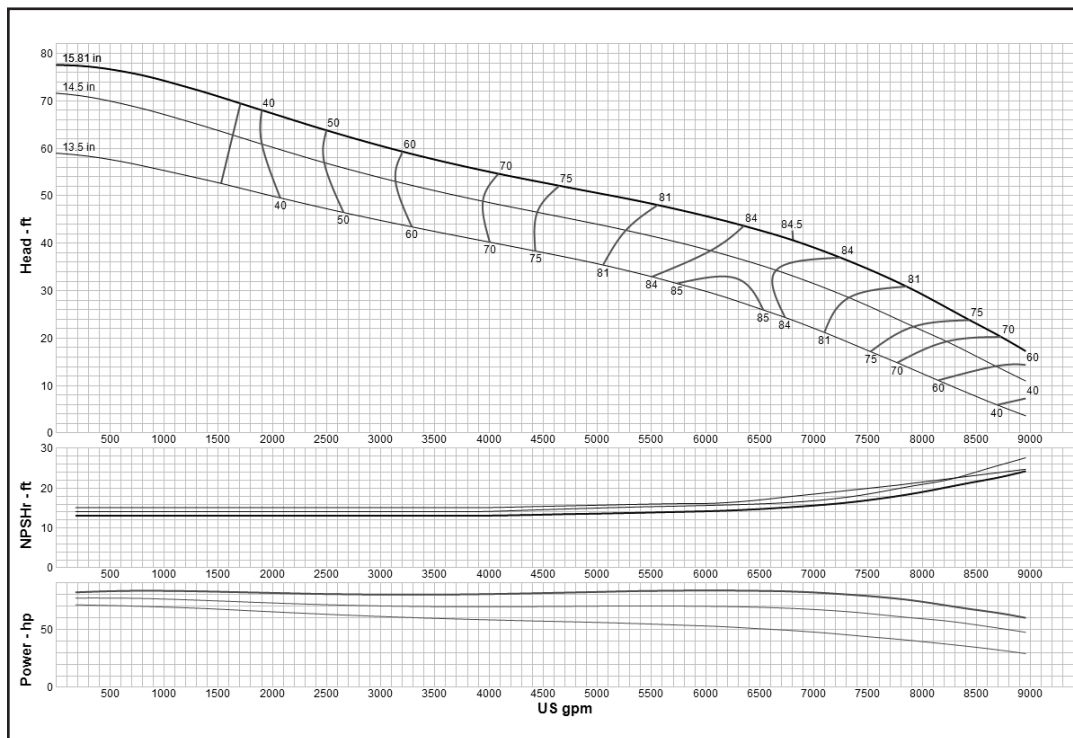
<b>Curve No. E6824GAPP1</b>	
<b>Model</b>	<b>24GHC</b>
<b>RPM</b>	<b>880</b>
EFFICIENCY CORRECTION	
1-STAGE	0
2-STAGE	0
3-STAGE	0
4-STAGE	0
<b>Impeller</b>	<b>ENCLOSED</b>
<b>Ns =</b>	<b>4774</b>
<b>K =</b>	<b>60</b>
Bowl O. D.	24.25 in
Bowl Lateral	1.62
Max. PSI	250
Disch size	--
<b>TURBINE OPERATIONS</b>	
Lubbock, Texas	
BOWL PERFORMANCE CURVE BASED ON PUMPING CLEAR, NON-AERATED WATER. RATED POINT ONLY IS GUARANTEED. CURVES REPRESENT SINGLE STAGE PERFORMANCE BASED ON TEST OF MULTI-STAGE BOWL ASSEMBLY. EFFICIENCY CORRECTION APPLIES TO HEAD, FLOW AND HORSEPOWER FOR LESSER STAGES.	

### MODEL 24GHXC (Effective July 1, 2014)



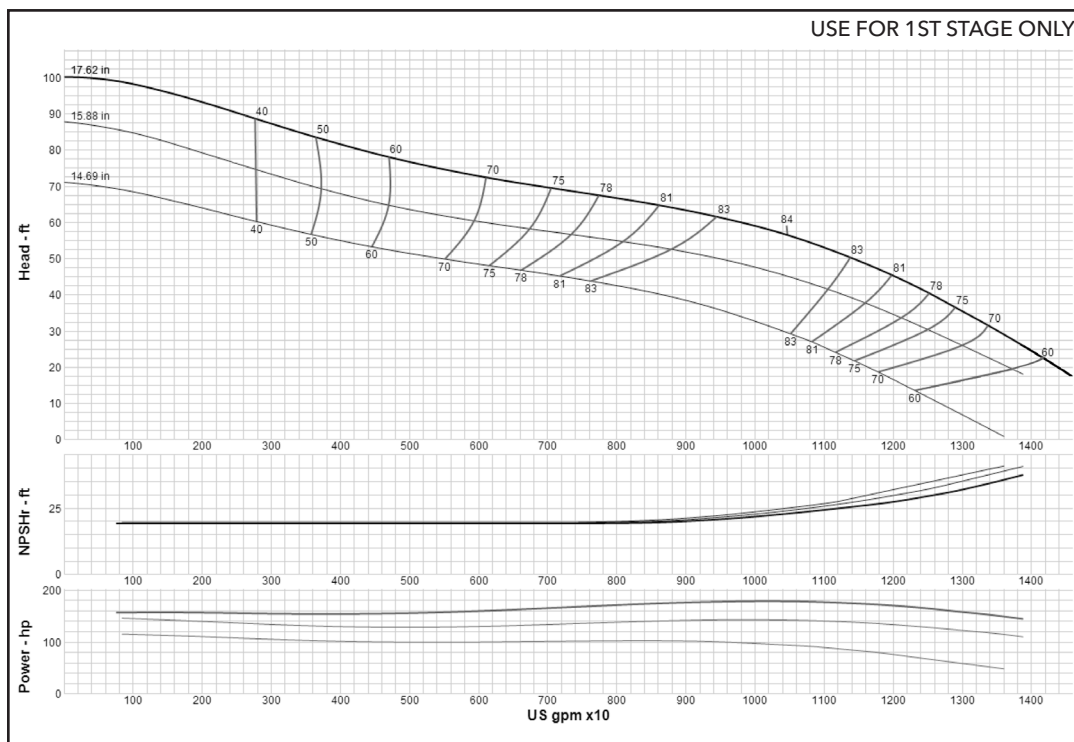
<b>Curve No. E6824GGPC1</b>	
<b>Model</b>	<b>24GHXC</b>
<b>RPM</b>	<b>880</b>
EFFICIENCY CORRECTION	
1-STAGE	0
2-STAGE	0
3-STAGE	0
4-STAGE	0
<b>Impeller</b>	<b>ENCLOSED</b>
<b>Ns =</b>	<b>4174</b>
<b>K =</b>	<b>68.7</b>
Bowl O. D.	24.25 in
Bowl Lateral	1.62
Max. PSI	300
Disch size	--
<b>TURBINE OPERATIONS</b>	
Lubbock, Texas	
BOWL PERFORMANCE CURVE BASED ON PUMPING CLEAR, NON-AERATED WATER. RATED POINT ONLY IS GUARANTEED. CURVES REPRESENT SINGLE STAGE PERFORMANCE BASED ON TEST OF MULTI-STAGE BOWL ASSEMBLY. EFFICIENCY CORRECTION APPLIES TO HEAD, FLOW AND HORSEPOWER FOR LESSER STAGES.	

### MODEL 24GLC (Effective September 1, 2017)



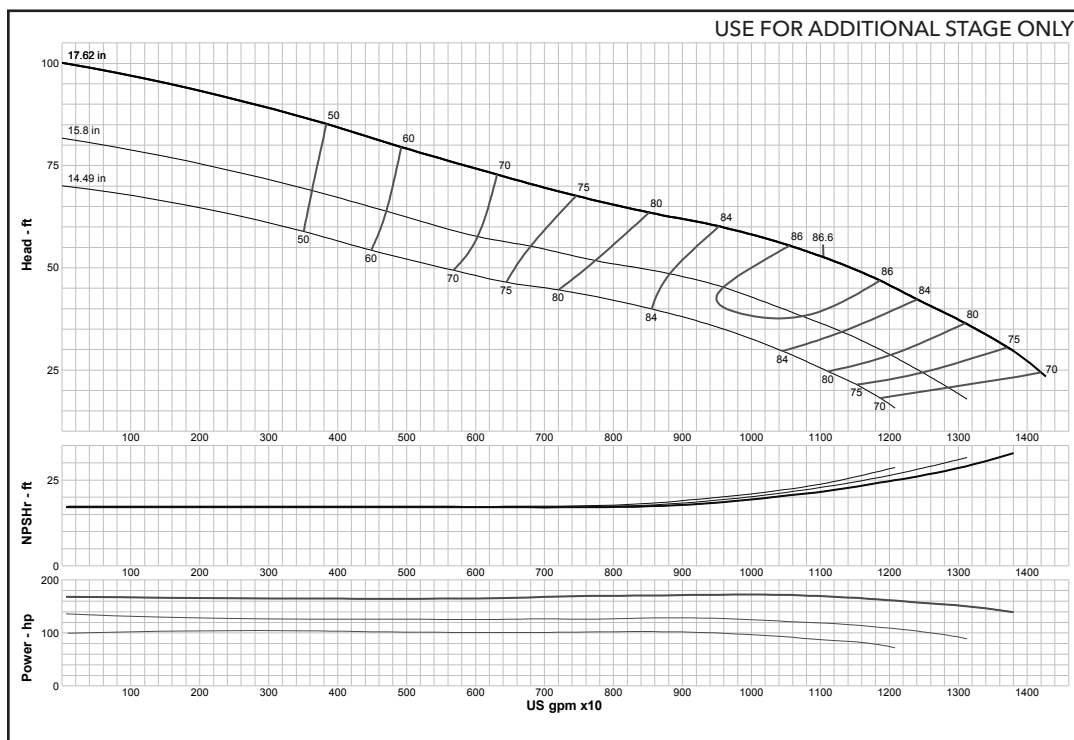
<b>Curve No. E6824GCPC1</b>	
<b>Model</b>	<b>24GLC</b>
<b>RPM</b>	<b>880</b>
EFFICIENCY CORRECTION	
1-STAGE	0
2-STAGE	0
3-STAGE	0
4-STAGE	0
<b>Impeller</b>	<b>ENCLOSED</b>
<b>Ns =</b>	<b>4654</b>
<b>K =</b>	<b>59.5</b>
Bowl O. D.	24.25 in
Bowl Lateral	1.62
Max. PSI	250
Disch size	--
<b>TURBINE OPERATIONS</b>	
Lubbock, Texas	
BOWL PERFORMANCE CURVE BASED ON PUMPING CLEAR, NON-AERATED WATER. RATED POINT ONLY IS GUARANTEED. CURVES REPRESENT SINGLE STAGE PERFORMANCE BASED ON TEST OF MULTI-STAGE BOWL ASSEMBLY. EFFICIENCY CORRECTION APPLIES TO HEAD, FLOW AND HORSEPOWER FOR LESSER STAGES.	

### MODEL 26GHC (Effective September 1, 2017)



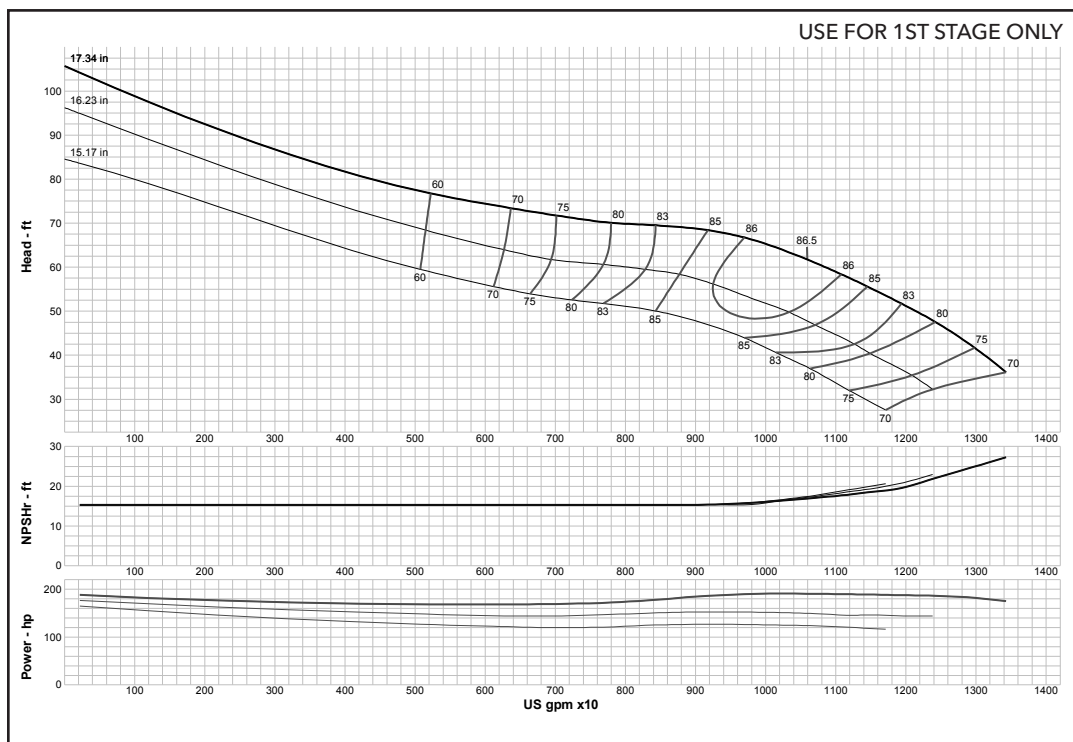
<b>Curve No. E6826GAPC1</b>	
<b>Model</b>	<b>26GHC</b>
<b>RPM</b>	<b>880</b>
EFFICIENCY CORRECTION	
1-STAGE	0
2-STAGE	0
3-STAGE	0
4-STAGE	0
<b>Impeller</b>	<b>ENCLOSED</b>
<b>Ns =</b>	<b>4376</b>
<b>K =</b>	<b>64.2</b>
Bowl O. D.	26.00 in
Bowl Lateral	1
Max. PSI	230
Disch size	--
<b>TURBINE OPERATIONS</b>	
Lubbock, Texas	
BOWL PERFORMANCE CURVE BASED ON PUMPING CLEAR, NON-AERATED WATER. RATED POINT ONLY IS GUARANTEED. CURVES REPRESENT SINGLE STAGE PERFORMANCE BASED ON TEST OF MULTI-STAGE BOWL ASSEMBLY. EFFICIENCY CORRECTION APPLIES TO HEAD, FLOW AND HORSEPOWER FOR LESSER STAGES.	

### MODEL 26GHC (Effective July 1, 2014)



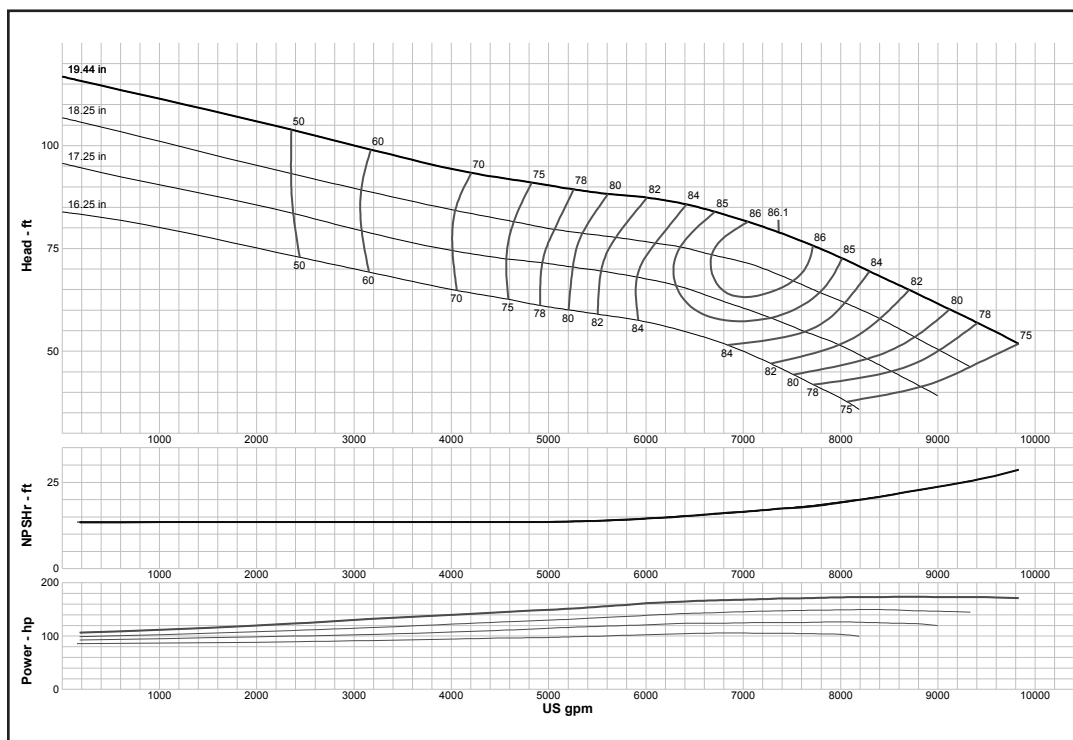
<b>Curve No. E6826GAPC1</b>	
<b>Model</b>	<b>26GHC</b>
<b>RPM</b>	<b>880</b>
EFFICIENCY CORRECTION	
1-STAGE	0
2-STAGE	0
3-STAGE	0
4-STAGE	0
<b>Impeller</b>	<b>ENCLOSED</b>
<b>Ns =</b>	<b>4376</b>
<b>K =</b>	<b>64.2</b>
Bowl O. D.	26.00 in
Bowl Lateral	1
Max. PSI	230
Disch size	--
<b>TURBINE OPERATIONS</b>	
Lubbock, Texas	
BOWL PERFORMANCE CURVE BASED ON PUMPING CLEAR, NON-AERATED WATER. RATED POINT ONLY IS GUARANTEED. CURVES REPRESENT SINGLE STAGE PERFORMANCE BASED ON TEST OF MULTI-STAGE BOWL ASSEMBLY. EFFICIENCY CORRECTION APPLIES TO HEAD, FLOW AND HORSEPOWER FOR LESSER STAGES.	

### MODEL 26GHXC (Effective July 1, 2014)



<b>Curve No. E6626GPC1</b>	
<b>Model</b>	<b>26GHXC</b>
<b>RPM</b>	<b>880</b>
EFFICIENCY CORRECTION	
1-STAGE	0
2-STAGE	0
3-STAGE	0
4-STAGE	0
<b>Impeller</b>	<b>ENCLOSED</b>
<b>Ns =</b>	<b>4130</b>
<b>K =</b>	<b>80.9</b>
Bowl O. D.	26.00 in
Bowl Lateral	1
Max. PSI	200
Disch size	--
<b>TURBINE OPERATIONS</b>	
Lubbock, Texas	
BOWL PERFORMANCE CURVE BASED ON PUMPING CLEAR, NON-AERATED WATER. RATED POINT ONLY IS GUARANTEED. CURVES REPRESENT SINGLE STAGE PERFORMANCE BASED ON TEST OF MULTI-STAGE BOWL ASSEMBLY. EFFICIENCY CORRECTION APPLIES TO HEAD, FLOW AND HORSEPOWER FOR LESSER STAGES.	

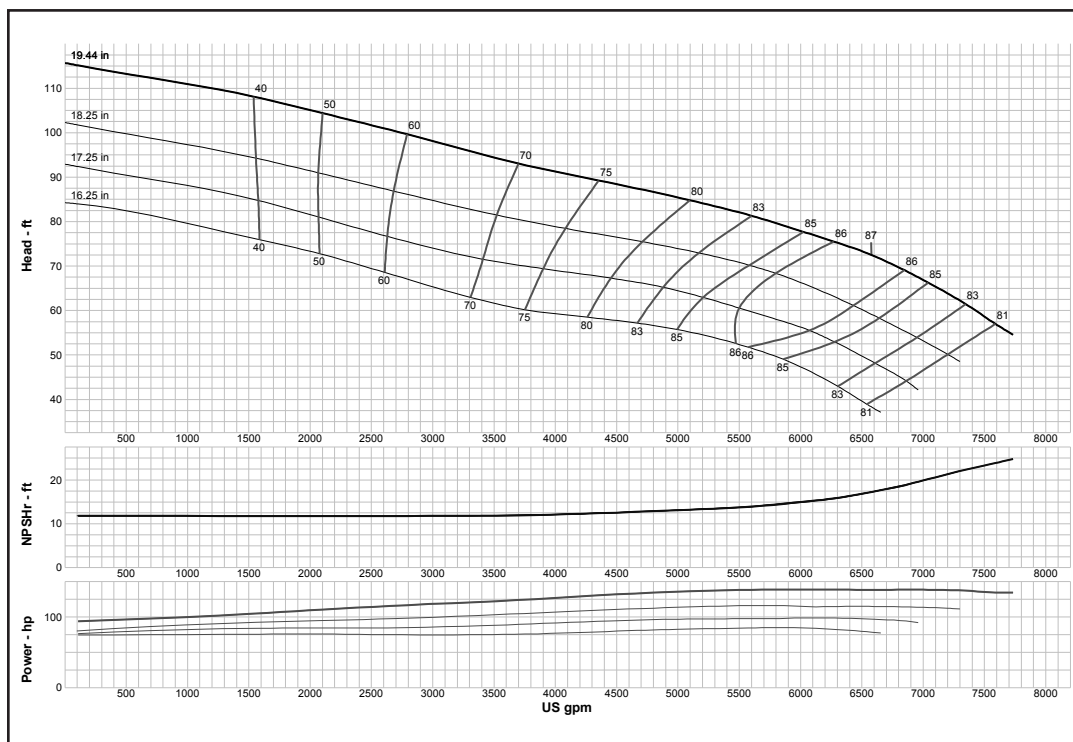
### MODEL 28BHC (Effective July 1, 2014)



<b>Curve No. E6828BBPC0</b>	
<b>Model</b>	<b>28BHC</b>
<b>RPM</b>	<b>880</b>
EFFICIENCY CORRECTION	
1-STAGE	-1
2-STAGE	0
3-STAGE	0
4-STAGE	0
<b>Impeller</b>	<b>ENCLOSED</b>
<b>Ns =</b>	<b>2836</b>
<b>K =</b>	<b>68.5</b>
Bowl O. D.	26.88 in
Bowl Lateral	0.87
Max. PSI	220
Disch size	--
<b>TURBINE OPERATIONS</b>	
Lubbock, Texas	
BOWL PERFORMANCE CURVE BASED ON PUMPING CLEAR, NON-AERATED WATER. RATED POINT ONLY IS GUARANTEED. CURVES REPRESENT SINGLE STAGE PERFORMANCE BASED ON TEST OF MULTI-STAGE BOWL ASSEMBLY. EFFICIENCY CORRECTION APPLIES TO HEAD, FLOW AND HORSEPOWER FOR LESSER STAGES.	

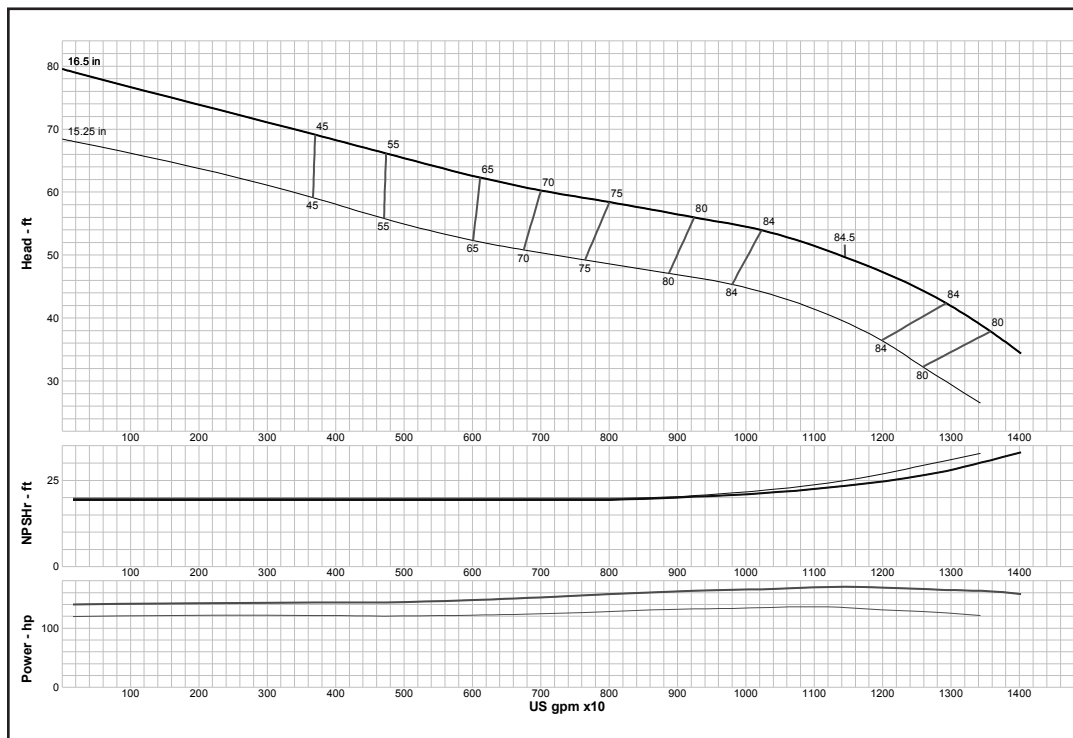
## Turbine

### MODEL 28BLC (Effective July 1, 2014)



<b>Curve No. E6828BEPC0</b>	
<b>Model</b>	<b>28BLC</b>
<b>RPM</b>	<b>880</b>
EFFICIENCY CORRECTION	
1-STAGE	-3
2-STAGE	-1
3-STAGE	0
4-STAGE	0
<b>Impeller</b>	<b>ENCLOSED</b>
<b>Ns =</b>	<b>2849</b>
<b>K =</b>	<b>68.5</b>
Bowl O. D.	26.88 in
Bowl Lateral	0.87
Max. PSI	220
Disch size	--
<b>TURBINE OPERATIONS</b>	
Lubbock, Texas	
BOWL PERFORMANCE CURVE BASED ON PUMPING CLEAR, NON-AERATED WATER. RATED POINT ONLY IS GUARANTEED. CURVES REPRESENT SINGLE STAGE PERFORMANCE BASED ON TEST OF MULTI-STAGE BOWL ASSEMBLY. EFFICIENCY CORRECTION APPLIES TO HEAD, FLOW AND HORSEPOWER FOR LESSER STAGES.	

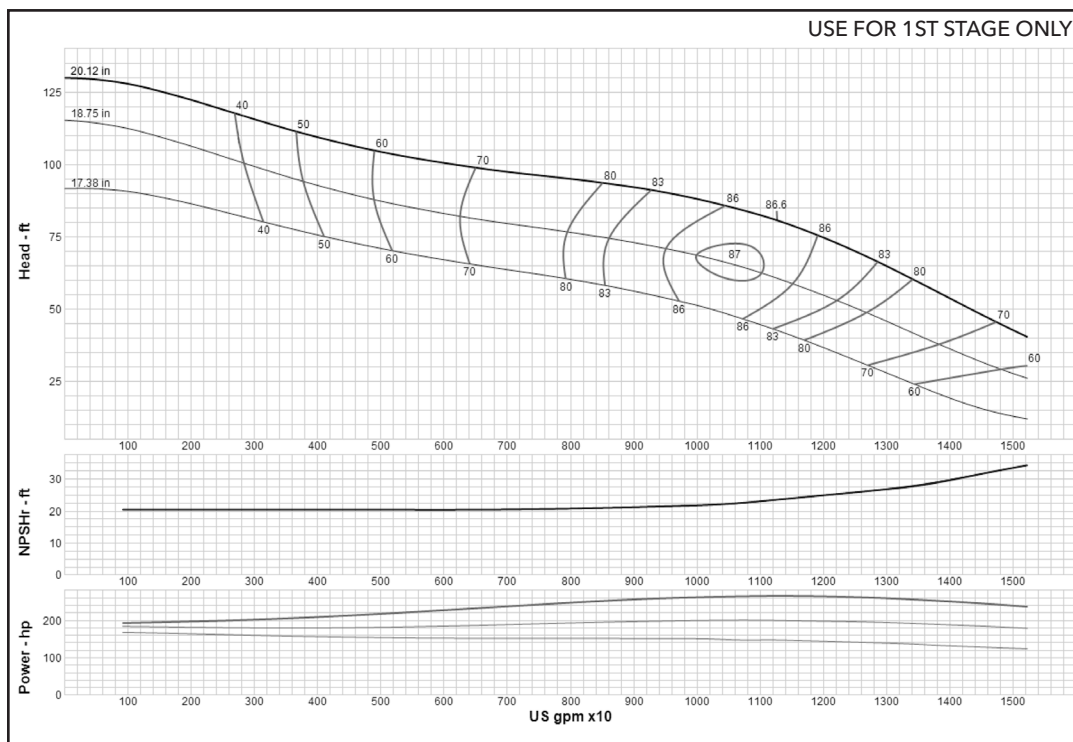
### MODEL 28GHC (Effective July 1, 2014)



<b>Curve No. E6828GAPC1</b>	
<b>Model</b>	<b>28GHC</b>
<b>RPM</b>	<b>880</b>
EFFICIENCY CORRECTION	
1-STAGE	0
2-STAGE	0
3-STAGE	0
4-STAGE	0
<b>Impeller</b>	<b>ENCLOSED</b>
<b>Ns =</b>	<b>4481</b>
<b>K =</b>	<b>69</b>
Bowl O. D.	26.88 in
Bowl Lateral	1.5
Max. PSI	190
Disch size	--
<b>TURBINE OPERATIONS</b>	
Lubbock, Texas	
BOWL PERFORMANCE CURVE BASED ON PUMPING CLEAR, NON-AERATED WATER. RATED POINT ONLY IS GUARANTEED. CURVES REPRESENT SINGLE STAGE PERFORMANCE BASED ON TEST OF MULTI-STAGE BOWL ASSEMBLY. EFFICIENCY CORRECTION APPLIES TO HEAD, FLOW AND HORSEPOWER FOR LESSER STAGES.	

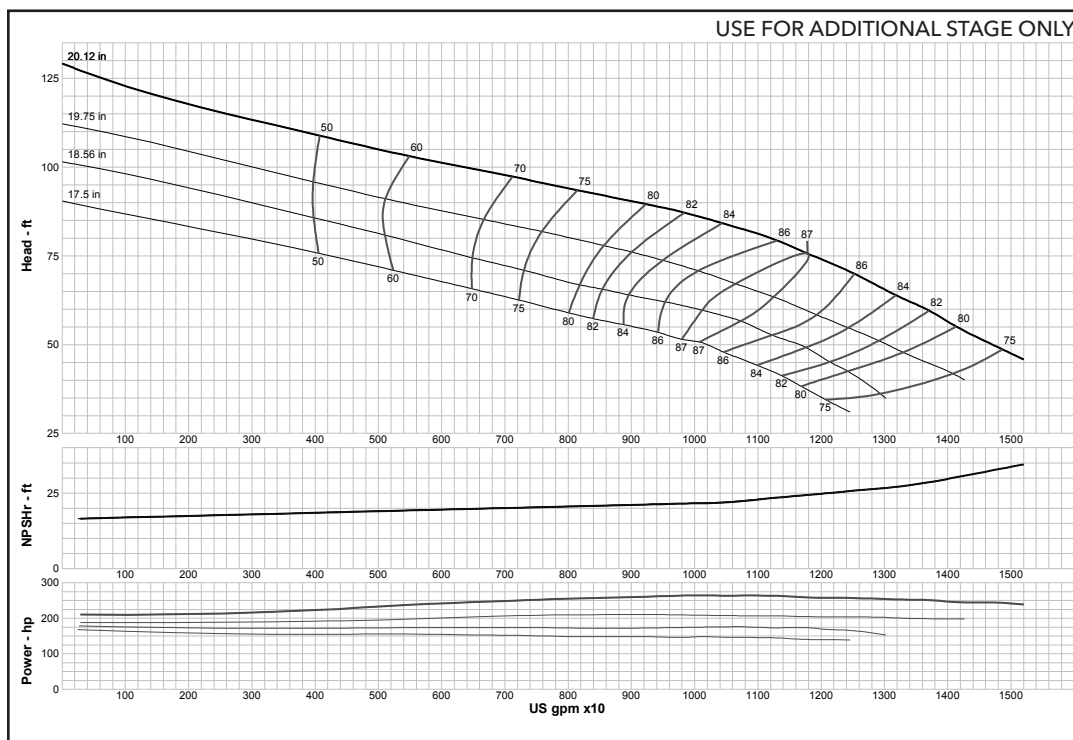
## Turbine

### MODEL 30BHC (Effective September 1, 2017)



<b>Curve No. E6630BDPC2</b>	
<b>Model</b>	<b>30BHC</b>
<b>RPM</b>	<b>880</b>
EFFICIENCY CORRECTION	
1-STAGE	0
2-STAGE	0
3-STAGE	0
4-STAGE	0
<b>Impeller</b>	<b>ENCLOSED</b>
<b>Ns =</b>	<b>3540</b>
<b>K =</b>	<b>92</b>
Bowl O. D.	29.50 in
Bowl Lateral	0.87
Max. PSI	216
Disch size	--
<b>TURBINE OPERATIONS</b>	
Lubbock, Texas	
BOWL PERFORMANCE CURVE BASED ON PUMPING CLEAR, NON-AERATED WATER. RATED POINT ONLY IS GUARANTEED. CURVES REPRESENT SINGLE STAGE PERFORMANCE BASED ON TEST OF MULTI-STAGE BOWL ASSEMBLY. EFFICIENCY CORRECTION APPLIES TO HEAD, FLOW AND HORSEPOWER FOR LESSER STAGES.	

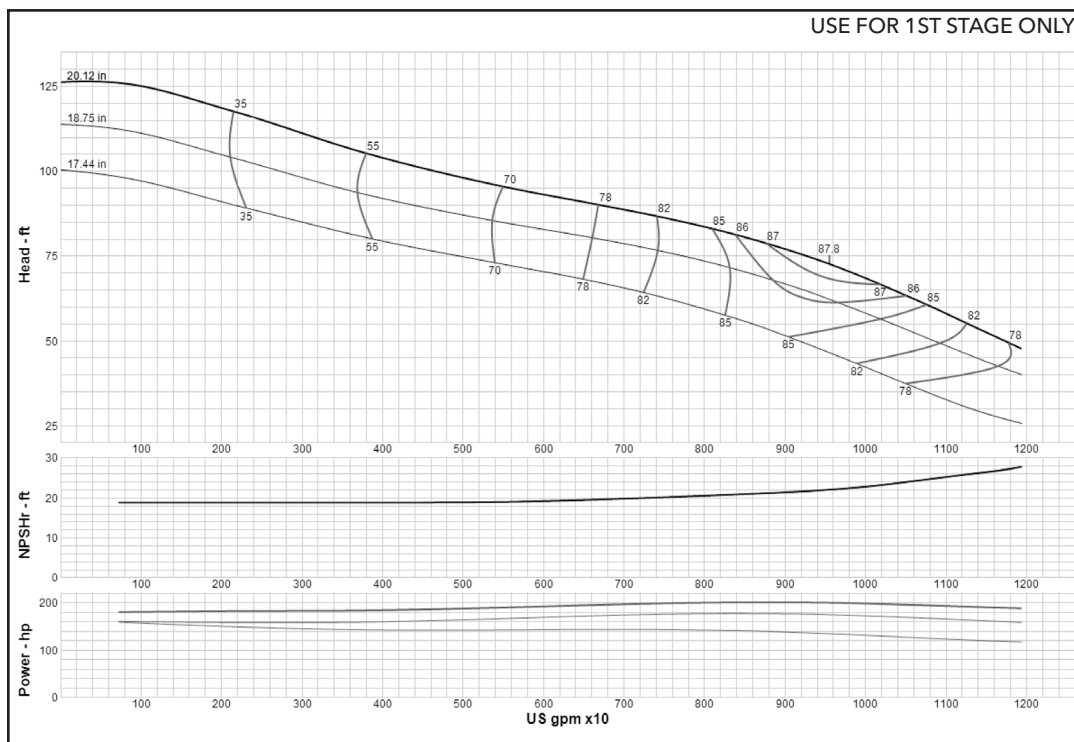
### MODEL 30BHC (Effective July 1, 2014)



<b>Curve No. E6630BDPC2</b>	
<b>Model</b>	<b>30BHC</b>
<b>RPM</b>	<b>880</b>
EFFICIENCY CORRECTION	
1-STAGE	0
2-STAGE	0
3-STAGE	0
4-STAGE	0
<b>Impeller</b>	<b>ENCLOSED</b>
<b>Ns =</b>	<b>3540</b>
<b>K =</b>	<b>92</b>
Bowl O. D.	29.50 in
Bowl Lateral	0.87
Max. PSI	216
Disch size	--
<b>TURBINE OPERATIONS</b>	
Lubbock, Texas	
BOWL PERFORMANCE CURVE BASED ON PUMPING CLEAR, NON-AERATED WATER. RATED POINT ONLY IS GUARANTEED. CURVES REPRESENT SINGLE STAGE PERFORMANCE BASED ON TEST OF MULTI-STAGE BOWL ASSEMBLY. EFFICIENCY CORRECTION APPLIES TO HEAD, FLOW AND HORSEPOWER FOR LESSER STAGES.	

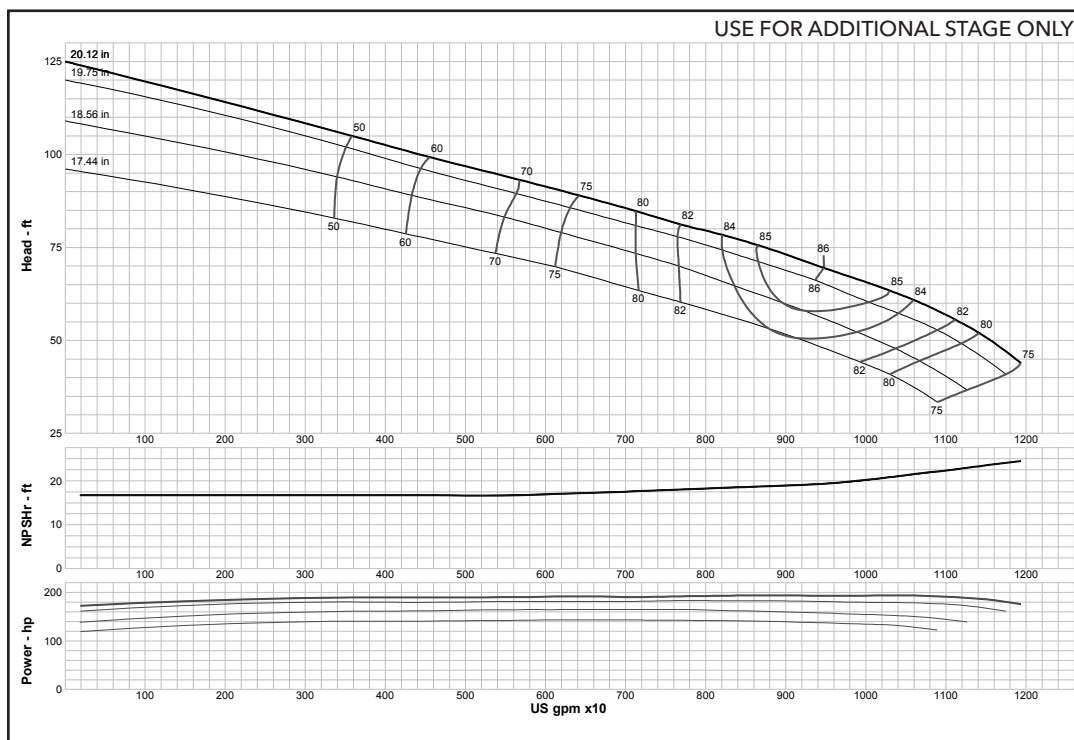


### MODEL 30BLC (Effective September 1, 2017)



<b>Curve No. E6830BGPC3</b>	
<b>Model</b>	<b>30BLC</b>
<b>RPM</b>	<b>880</b>
EFFICIENCY CORRECTION	
1-STAGE	0
2-STAGE	0
3-STAGE	0
4-STAGE	0
<b>Impeller</b>	<b>ENCLOSED</b>
<b>Ns =</b>	<b>3557</b>
<b>K =</b>	<b>92</b>
Bowl O. D.	29.50 in
Bowl Lateral	0.87
Max. PSI	216
Disch size	--
<b>TURBINE OPERATIONS</b>	
Lubbock, Texas	
BOWL PERFORMANCE CURVE BASED ON PUMPING CLEAR, NON-AERATED WATER. RATED POINT ONLY IS GUARANTEED. CURVES REPRESENT SINGLE STAGE PERFORMANCE BASED ON TEST OF MULTI-STAGE BOWL ASSEMBLY. EFFICIENCY CORRECTION APPLIES TO HEAD, FLOW AND HORSEPOWER FOR LESSER STAGES.	

### MODEL 30BLC (Effective July 1, 2014)



<b>Curve No. E6830BGPC3</b>	
<b>Model</b>	<b>30BLC</b>
<b>RPM</b>	<b>880</b>
EFFICIENCY CORRECTION	
1-STAGE	0
2-STAGE	0
3-STAGE	0
4-STAGE	0
<b>Impeller</b>	<b>ENCLOSED</b>
<b>Ns =</b>	<b>3557</b>
<b>K =</b>	<b>92</b>
Bowl O. D.	29.50 in
Bowl Lateral	0.87
Max. PSI	216
Disch size	--
<b>TURBINE OPERATIONS</b>	
Lubbock, Texas	
BOWL PERFORMANCE CURVE BASED ON PUMPING CLEAR, NON-AERATED WATER. RATED POINT ONLY IS GUARANTEED. CURVES REPRESENT SINGLE STAGE PERFORMANCE BASED ON TEST OF MULTI-STAGE BOWL ASSEMBLY. EFFICIENCY CORRECTION APPLIES TO HEAD, FLOW AND HORSEPOWER FOR LESSER STAGES.	



## NOTES

# Xylem |'zīləm|

- 1) The tissue in plants that brings water upward from the roots;
- 2) a leading global water technology company.

We're a global team unified in a common purpose: creating advanced technology solutions to the world's water challenges. Developing new technologies that will improve the way water is used, conserved, and re-used in the future is central to our work. Our products and services move, treat, analyze, monitor and return water to the environment, in public utility, industrial, residential and commercial building services, and agricultural settings. With its October 2016 acquisition of Sensus, Xylem added smart metering, network technologies and advanced data analytics for water, gas and electric utilities to its portfolio of solutions. In more than 150 countries, we have strong, long-standing relationships with customers who know us for our powerful combination of leading product brands and applications expertise with a strong focus on developing comprehensive, sustainable solutions.

**For more information on how Xylem can help you, go to [www.xylem.com](http://www.xylem.com)**



Xylem Inc.  
P.O. Box 5487  
Lubbock, TX 79408  
Tel +1.806.763.7867  
Fax +1.800.453.4749  
[www.xylem.com](http://www.xylem.com)

Goulds is a registered trademark of Goulds Pumps, Inc. and is used under license.  
© 2018 Xylem Inc. C900 R3 January 2018