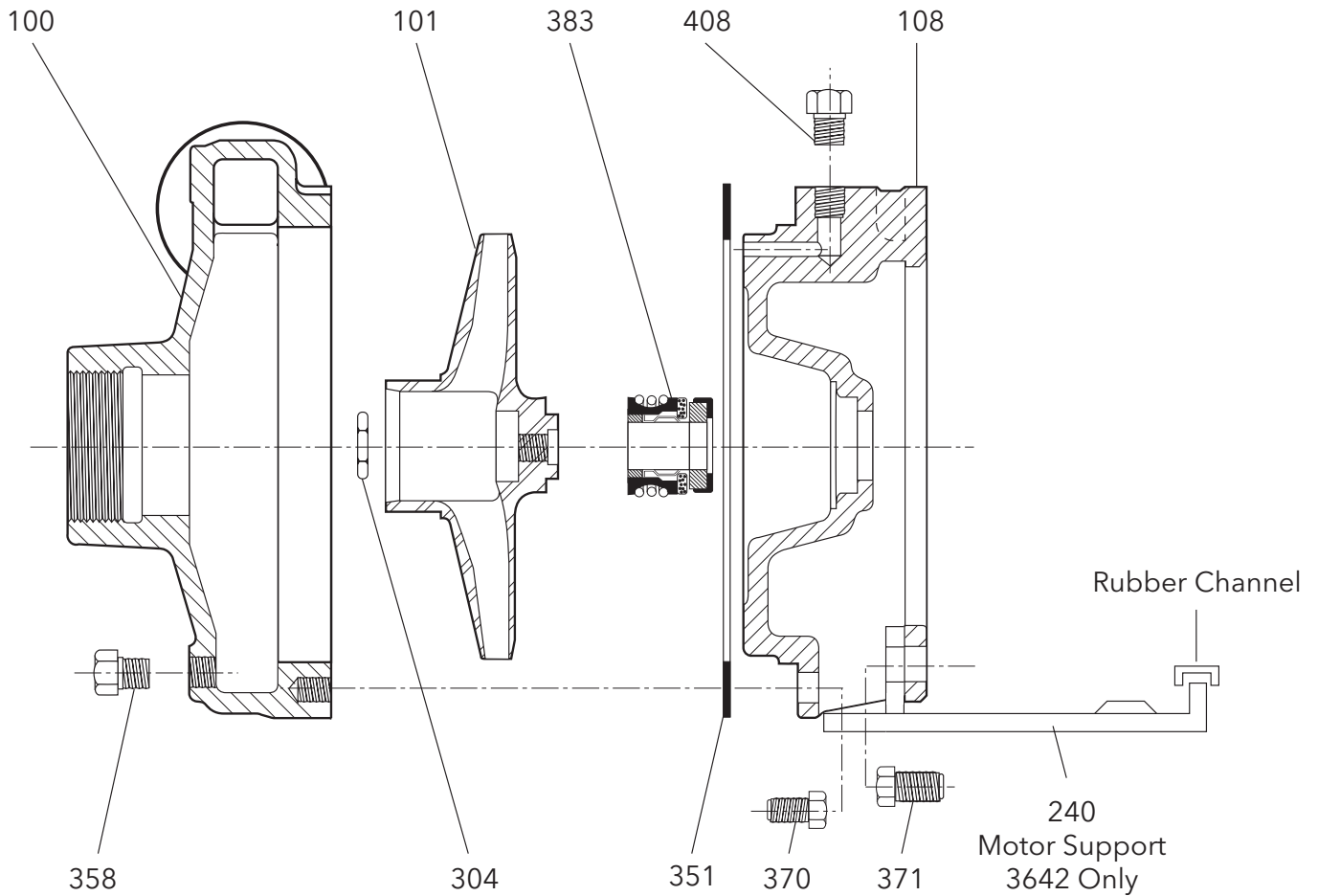


# 3642/3742

## REPAIR PARTS



For XS-Group power frame individual parts,  
see XS-Group power frame repair parts page.

| REPLACEMENT PARTS LISTING |                                       | PART ORDER NO. |       |          |       |            |       |
|---------------------------|---------------------------------------|----------------|-------|----------|-------|------------|-------|
| Item No.                  | Description                           | Material       |       |          |       |            |       |
|                           |                                       | Bronze Fitted  |       | All Iron |       | All Bronze |       |
|                           |                                       | Pump Size      |       |          |       |            |       |
|                           |                                       | 1BF            | 2BF   | 1AI      | 2AI   | 1AB        | 2AB   |
| 100                       | Casing with plug                      | 1K70           | 1K73  | 1K70     | 1K73  | 1K72       | 1K75  |
| 101                       | Impeller diameter - 5 $\frac{3}{8}$ " | 2K36           | 2K920 | 2K75     | 2K90  | 2K36       | 2K920 |
|                           | 5 $\frac{1}{8}$ "                     | 2K37           | -     | 2K76     | -     | 2K37       | -     |
|                           | 5"                                    | -              | 2K921 | -        | 2K91  | -          | 2K921 |
|                           | 4 $\frac{7}{16}$ "                    | 2K38           | -     | 2K77     | -     | 2K38       | -     |
|                           | 4 $\frac{3}{8}$ "                     | -              | 2K922 | -        | 2K92  | -          | 2K922 |
|                           | 3 $\frac{7}{8}$ "                     | 2K39           | 2K923 | 2K78     | 2K93  | 2K39       | 2K923 |
|                           | 3 $\frac{5}{8}$ "                     | -              | 2K924 | -        | 2K94  | -          | 2K924 |
|                           | 3 $\frac{3}{16}$ "                    | 2K40           | -     | 2K79     | -     | 2K40       | -     |
|                           | 3 $\frac{1}{16}$ "                    | 2K41           | -     | 2K80     | -     | 2K41       | -     |
|                           | 3 $\frac{1}{8}$ "                     | -              | 2K925 | -        | 2K95  | -          | 2K925 |
|                           | 2 $\frac{7}{8}$ "                     | -              | 2K926 | -        | 2K96  | -          | 2K926 |
| 108                       | Frame adapter                         | 1K265          |       |          | 1K266 |            |       |
| 240                       | Motor Support                         | 4K520          |       |          |       |            |       |
|                           | Rubber Channel                        |                |       |          |       |            |       |
| 304                       | Impeller locknut - three phase only   | 13K286         |       |          |       |            |       |
| 351                       | Casing gasket                         | 5K115          |       |          |       |            |       |
| 358                       | Drain plug                            | 6K1            |       |          |       |            |       |
| 370                       | Hex head screws - casing              | 13K3           |       |          |       |            |       |
| 371                       | Hex head screws - adapter             | 13K71          |       |          |       |            |       |
| 383                       | Mechanical Seal                       |                |       |          |       |            |       |
|                           | Carbon/ceramic/BUNA                   | 10K10          |       |          |       |            |       |
|                           | Carbon/Ni-resist/BUNA                 | 10K6           |       |          |       |            |       |
|                           | Carbon/sil-car/EPR                    | 10K18          |       |          |       |            |       |
|                           | Carbon/sil-car/viton                  | 10K55          |       |          |       |            |       |
| 408                       | Prime plug                            | 6K2            |       |          |       |            |       |

\* Lubrication of socket head screw is recommended to avoid galling of stainless steel parts.

#### MOTOR REFERENCE CHART (for 3642 only)

|           | NEMA Standard<br>56J Flange | Single Phase |        | Three Phase |              |
|-----------|-----------------------------|--------------|--------|-------------|--------------|
|           |                             | ODP          | TEFC   | ODP         | TEFC*        |
| Motor RPM | ½ HP                        | E04853S      | E04821 | E04873S     | E04876       |
|           | ¾ HP                        | E05853S      | E05821 | E05873S     | E05876       |
|           | 1 HP                        | E06853S      | E06821 | E06873S     | E06C32E5EB5G |
|           | 1½ HP                       | E07858S      | E07821 | E07878S     | E07C32E5EB4G |
|           | 2 HP                        | E08854S      | E08821 | E08874S     | E08C32E5EB3G |
|           | 3 HP                        | E09854S      | E09821 | E09874S     | E09C32E5EB2G |

NOTE: For motor pricing see end suction price booklet. For complete power frame assembly use part no. 14L61.

1AI, 1BF, 1AB = 1 x 1¼ - 5

2AI, 2BF, 2AB = 1¼ x 1½ - 5

\* Premium Efficient where required by DOE regulation

### Xylem Inc.

2881 East Bayard Street Ext., Suite A, Seneca Falls, NY 13148

Phone: (800) 453-6777 Fax: (888) 322-5877

www.gouldswatertechnology.com

