

**CURVES**

C3600 R3

---

# Lineshaft and Submersible Turbine Pump Curves

3600 RPM CURVES - 60 CYCLE PERFORMANCE

---

 **GOULDS**  
WATER TECHNOLOGY  
a xylem brand

## INDEX – 60 CYCLE PERFORMANCE – 3600 RPM

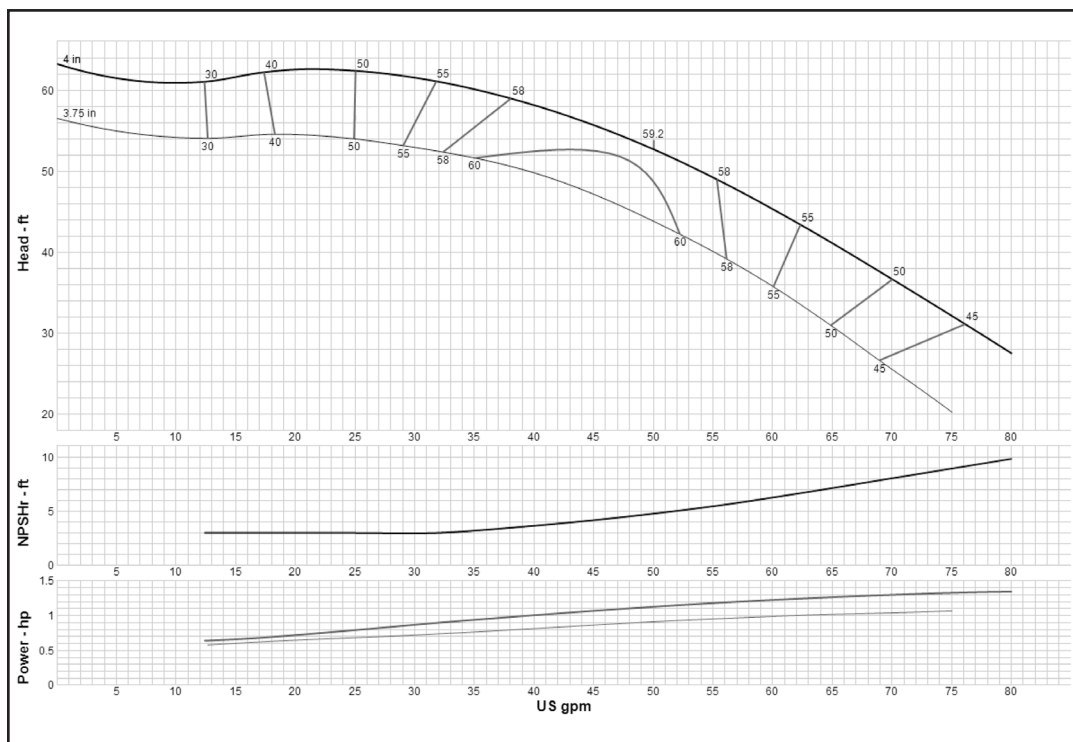
Model	RPM	Curve Number	Date Issued
5ALC	3550	E6205ACPC1	September 1, 2017
5CHC	3550	E6205CCPC2	July 1, 2014
5CLC	3550	E6205CFPC2	July 1, 2014
5RWAHC	3550	E6205WCPC2	September 1, 2017
5RWALC	3550	E6205WDPC2	July 1, 2014
5THC	3550	E6205TFPC1	July 1, 2014
5TLC	3550	E6205TEPC0	July 1, 2014
6CHC	3550	E6206CCPC2	September 1, 2017
6CLC	3550	E6206CFPC2	September 1, 2017
6DHHC	3550	E6206DCPCO	July 1, 2014
6DHHO	3550	E6206DDPC2	July 1, 2014
6DHLC	3550	E6206DEPCO	July 1, 2014
6DHLO	3550	E6206DFPC1	July 1, 2014
6RAHC	3550	E6206AAPC4	September 1, 2017
6RALC	3550	E6206ACPC4	September 1, 2017
7CHC	3550	E6207CCPC2	September 1, 2017
7CHO	3550	E6207CHPC0	July 1, 2014
7CLC	3550	E6207CFPC1	September 1, 2017
7CLO	3550	E6207CJPC0	July 1, 2014
7RAHC	3550	E6207RAPC1	September 1, 2017
7RALC	3550	E6207RBPC1	July 1, 2014
7THC	3550	E6207TFPC2	July 1, 2014
7TLC	3550	E6207TAPC2	July 1, 2014
7WAHC	3550	E6207WAPC1	September 1, 2017
7WALC	3550	E6207WBPCO	September 1, 2017
8FDHC	3550	E6208FDPC0	July 1, 2014
8FDHO	3550	E6208FEPC0	July 1, 2014
8FDLC	3550	E6208FFPC0	July 1, 2014
8FDLO	3550	E6208FGPC0	July 1, 2014
8RAHC	3550	E6208AAPC7	July 1, 2014
8RALC	3550	E6208ACPC5	July 1, 2014
8RJHC	3550	E6208RCPCO	July 1, 2014
8RJHO	3550	E6208RDPC1	July 1, 2014
8RJLC	3550	E6208REPC1	September 1, 2017
8RJLO	3550	E6208RFPC1	July 1, 2014
9RCHC	3550	E6209CCPC2	September 1, 2017
9RCHO	3550	E6409CHPC1	July 1, 2014
9RCLC	3550	E6209CFPC2	July 1, 2014
9RCLO	3550	E6409CJPC1	July 1, 2014
9THC	3550	E6209TEPC2	July 1, 2014
9TLC	3550	E6209TAPC2	July 1, 2014

## INDEX – 60 CYCLE PERFORMANCE – 3600 RPM

<b>Model</b>	<b>RPM</b>	<b>Curve Number</b>	<b>Date Issued</b>
9WAHC	3550	E6209WAPCO	September 1, 2017
9WALC	3550	E6209WBPCO	July 1, 2014
10RAHC	3550	E6210RAPC1	September 1, 2017
10RAHXC	3550	E6210ABPC2	July 1, 2014
10RALC	3550	E6210RBPC1	September 1, 2017
10RJHC	3550	E6410RCPC1	September 1, 2017
10RJLC	3550	E6210REPC1	September 1, 2017
10RJLO	3550	E6210RFPC1	July 1, 2014
10RJMC	3550	E6210RGPC1	July 1, 2014
10RJMO	3550	E6210RHPC1	July 1, 2014
10WAHC	3550	E6210WAPC1	July 1, 2014
10WALC	3550	E6210WBPC2	July 1, 2014
11CLC	3550	E6211CFPC1	September 1, 2017
11CLO	3550	E6411CJPCO	July 1, 2014
11RAHC	3550	E6211RAPC1	July 1, 2014
11RAHXC	3550	E6211ABPC2	July 1, 2014
11RALC	3550	E6211RBPC1	July 1, 2014
11WAHC	3550	E6211WAPCO	July 1, 2014
11WALC	3550	E6211WBPCO	July 1, 2014
12WAHC	3550	E60412WAPCO	July 1, 2014
12WALC	3550	E60412WBPCO	July 1, 2014
13RAHC	3550	E6213RAPC1	July 1, 2014
13RAHXC	3550	E6213ABPC2	July 1, 2014
13RALC	3550	E6213RBPC1	July 1, 2014

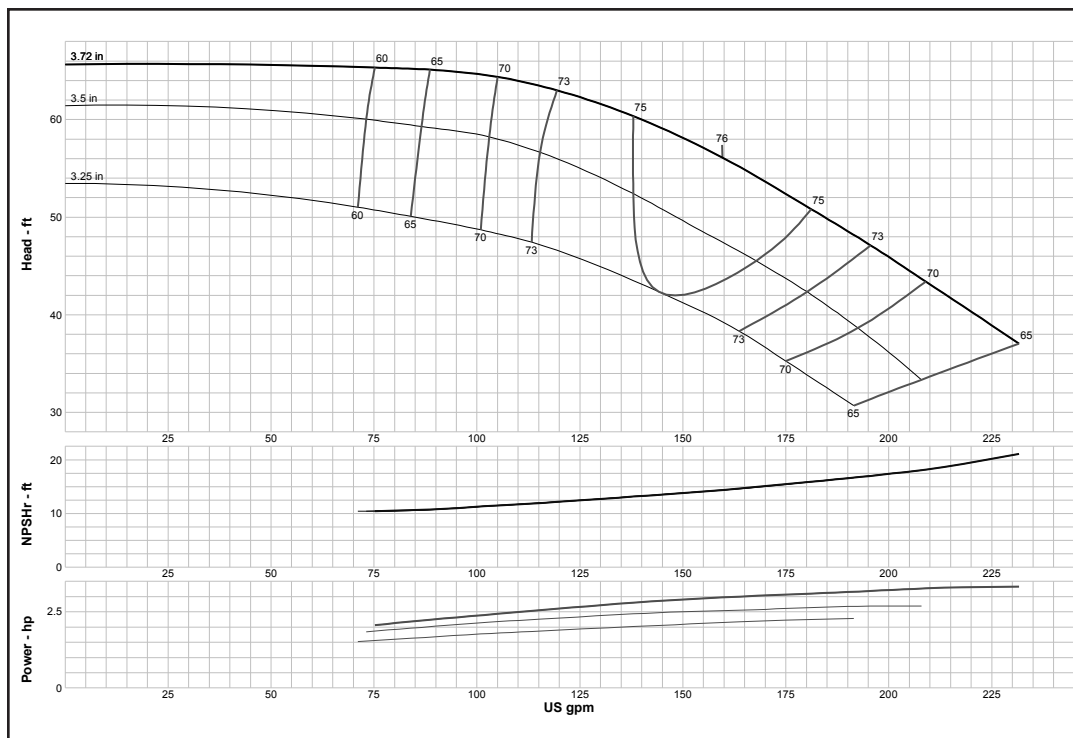
## Turbine

### MODEL 5ALC (Effective September 1, 2017)



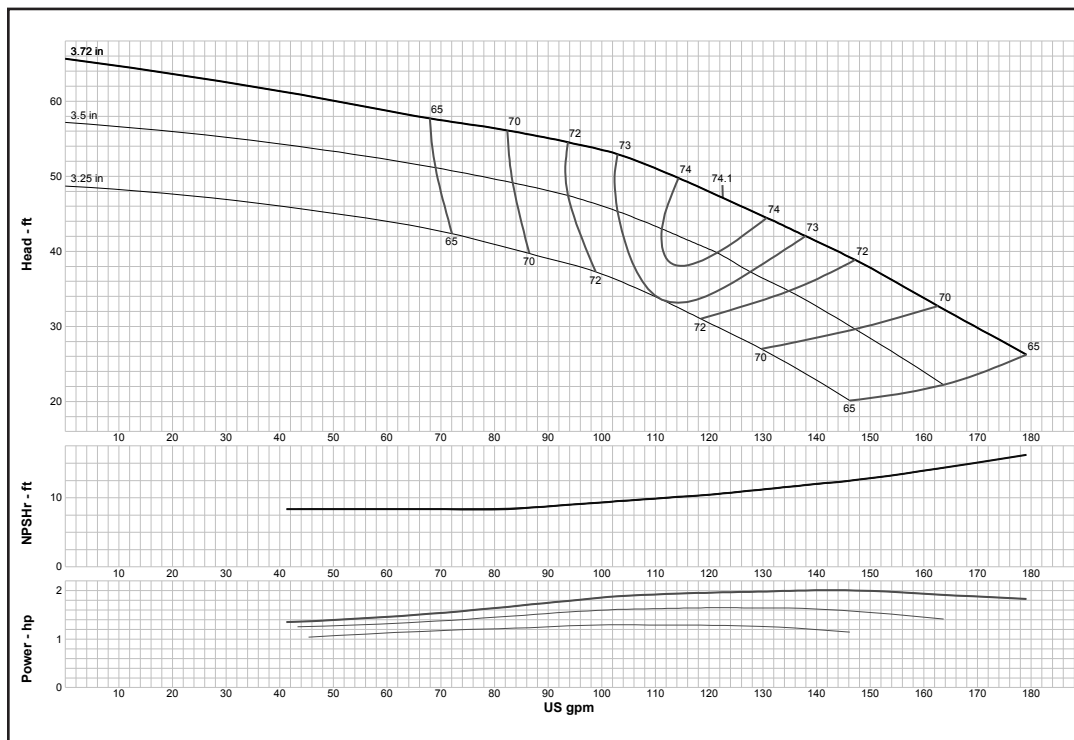
<b>Curve No. E6205ACPC1</b>	
<b>Model</b>	<b>5ALC</b>
<b>RPM</b>	<b>3550</b>
EFFICIENCY CORRECTION	
1-STAGE	-4
2-STAGE	-3
3-STAGE	-1.5
4-STAGE	0
<b>Impeller</b>	<b>ENCLOSED</b>
<b>Ns =</b>	<b>2187</b>
<b>K =</b>	<b>1.3</b>
Bowl O. D.	5.20 in
Bowl Lateral	0.25
Max. PSI	480
Disch size	3", 4"
<b>TURBINE OPERATIONS</b>	
Lubbock, Texas	
BOWL PERFORMANCE CURVE BASED ON PUMPING CLEAR, NON-AERATED WATER. RATED POINT ONLY IS GUARANTEED. CURVES REPRESENT SINGLE STAGE PERFORMANCE BASED ON TEST OF MULTI-STAGE BOWL ASSEMBLY. EFFICIENCY CORRECTION APPLIES TO HEAD, FLOW AND HORSEPOWER FOR LESSER STAGES.	

### MODEL 5CHC (Effective July 1, 2014)



<b>Curve No. E6205CCPC2</b>	
<b>Model</b>	<b>5CHC</b>
<b>RPM</b>	<b>3550</b>
EFFICIENCY CORRECTION	
1-STAGE	-4
2-STAGE	-3
3-STAGE	-1.5
4-STAGE	0
<b>Impeller</b>	<b>ENCLOSED</b>
<b>Ns =</b>	<b>2187</b>
<b>K =</b>	<b>1.3</b>
Bowl O. D.	5.20 in
Bowl Lateral	0.25
Max. PSI	480
Disch size	3", 4"
<b>TURBINE OPERATIONS</b>	
Lubbock, Texas	
BOWL PERFORMANCE CURVE BASED ON PUMPING CLEAR, NON-AERATED WATER. RATED POINT ONLY IS GUARANTEED. CURVES REPRESENT SINGLE STAGE PERFORMANCE BASED ON TEST OF MULTI-STAGE BOWL ASSEMBLY. EFFICIENCY CORRECTION APPLIES TO HEAD, FLOW AND HORSEPOWER FOR LESSER STAGES.	

### MODEL 5CLC (Effective July 1, 2014)



**Curve No. E6205CFPC2**

**Model 5CLC**

**RPM 3550**

EFFICIENCY CORRECTION

1-STAGE	-4
2-STAGE	-3
3-STAGE	-1.5
4-STAGE	0

**Impeller ENCLOSED**

**Ns = 2184**

**K = 1.4**

Bowl O. D. 5.20 in

Bowl Lateral 0.25

Max. PSI 480

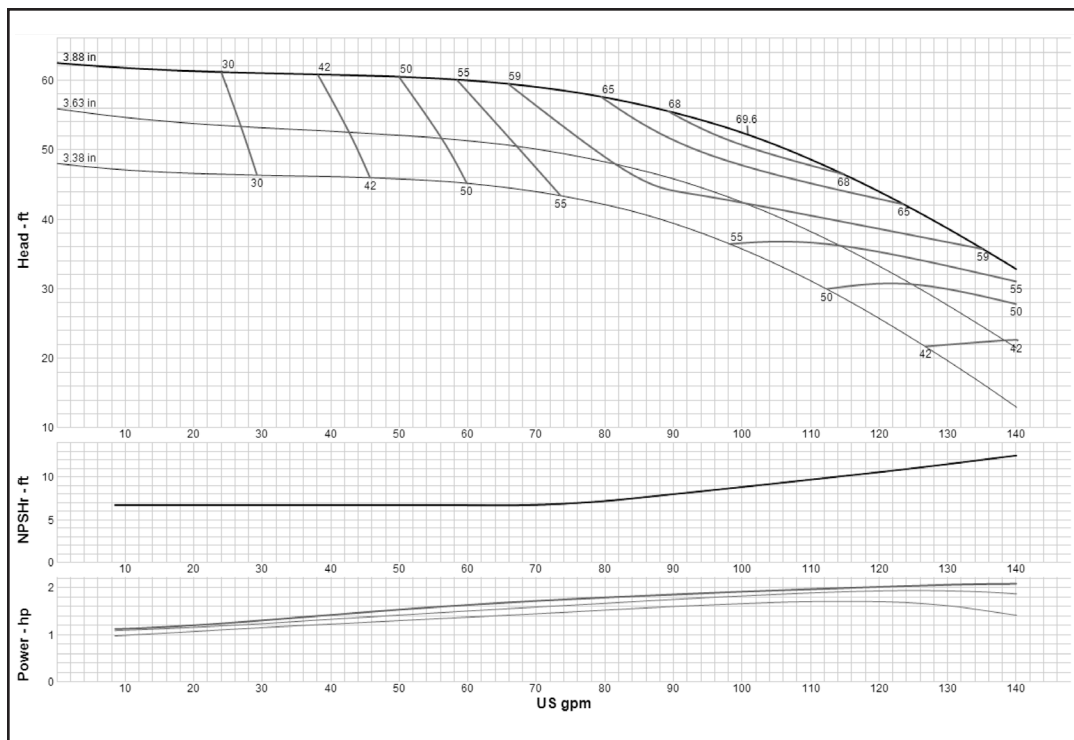
Disch size 3", 4"

**TURBINE OPERATIONS**

Lubbock, Texas

BOWL PERFORMANCE CURVE BASED ON PUMPING CLEAR, NON-AERATED WATER. RATED POINT ONLY IS GUARANTEED. CURVES REPRESENT SINGLE STAGE PERFORMANCE BASED ON TEST OF MULTI-STAGE BOWL ASSEMBLY. EFFICIENCY CORRECTION APPLIES TO HEAD, FLOW AND HORSEPOWER FOR LESSER STAGES.

### MODEL 5RWAHC (Effective September 1, 2017)



**Curve No. E6205WPC2**

**Model 5RWAHC**

**RPM 3550**

EFFICIENCY CORRECTION

1-STAGE	-4
2-STAGE	-2
3-STAGE	-1
4-STAGE	0

**Impeller ENCLOSED**

**Ns = 1810**

**K = 1.3**

Bowl O. D. 5.20 in

Bowl Lateral 0.5

Max. PSI 480

Disch size 3", 4"

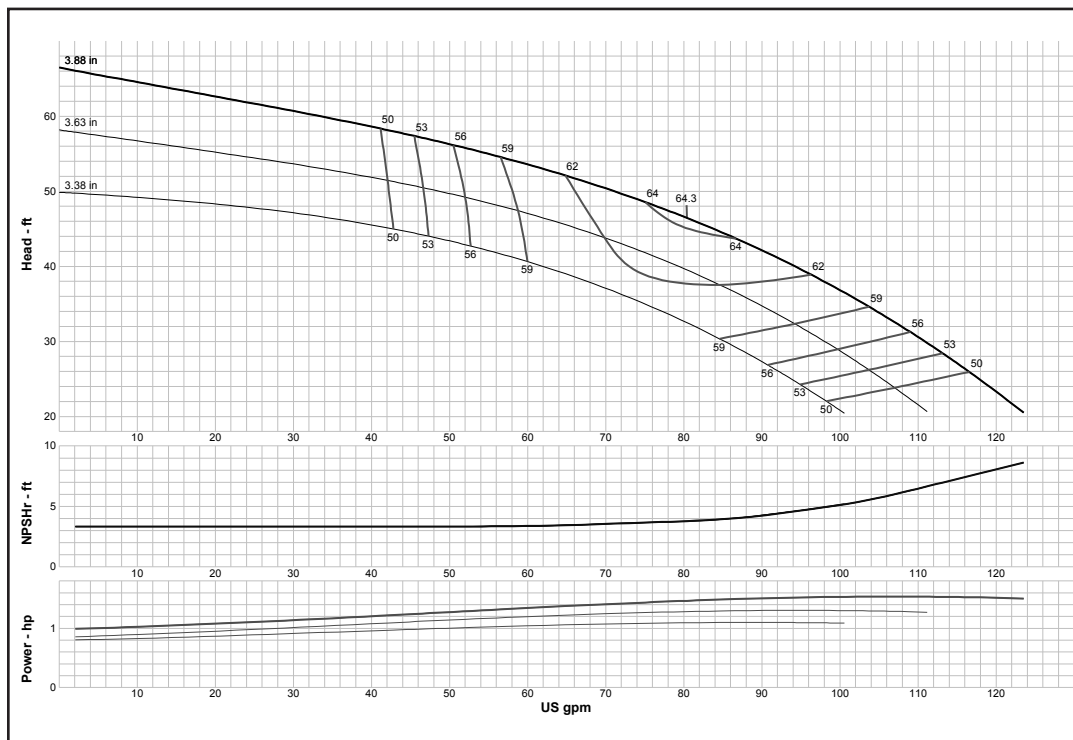
**TURBINE OPERATIONS**

Lubbock, Texas

BOWL PERFORMANCE CURVE BASED ON PUMPING CLEAR, NON-AERATED WATER. RATED POINT ONLY IS GUARANTEED. CURVES REPRESENT SINGLE STAGE PERFORMANCE BASED ON TEST OF MULTI-STAGE BOWL ASSEMBLY. EFFICIENCY CORRECTION APPLIES TO HEAD, FLOW AND HORSEPOWER FOR LESSER STAGES.

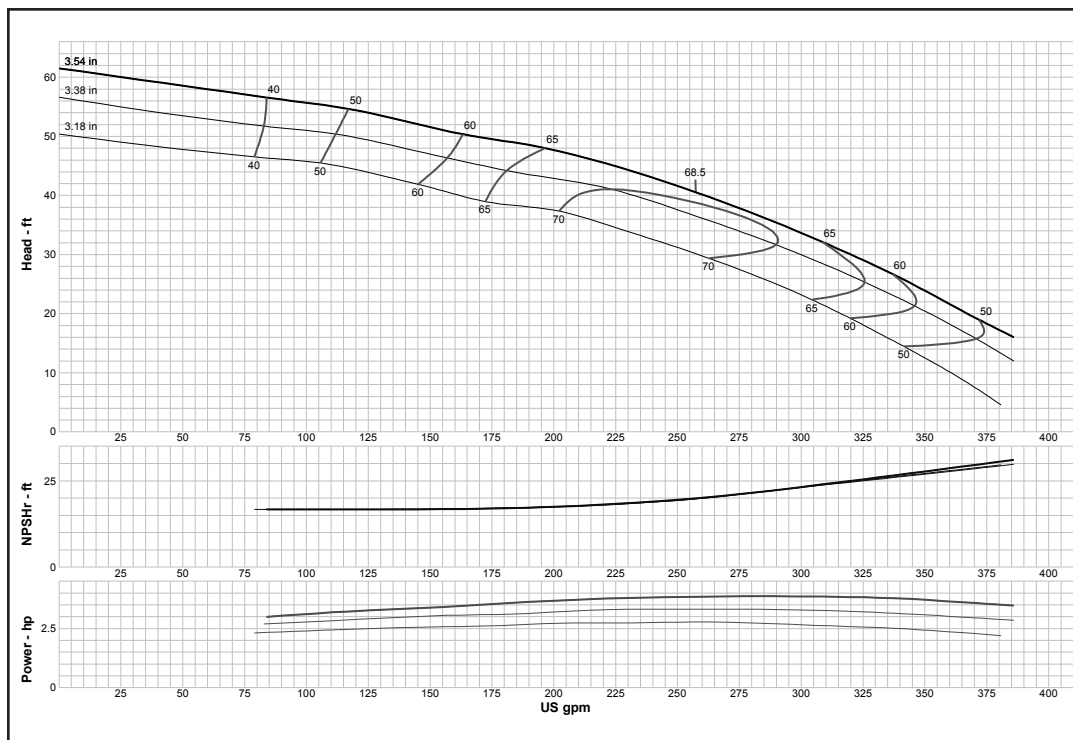
## Turbine

### MODEL 5RWALC (Effective July 1, 2014)



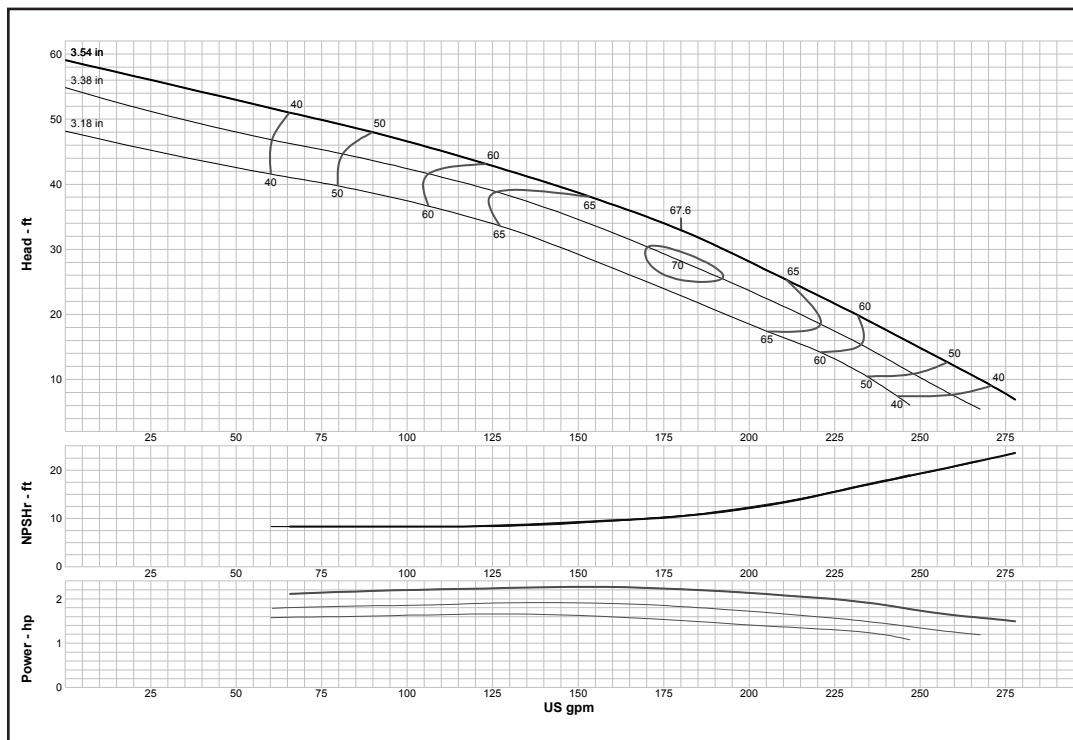
<b>Curve No. E6205WDPC2</b>	
<b>Model</b>	<b>5RWALC</b>
<b>RPM</b>	<b>3550</b>
EFFICIENCY CORRECTION	
1-STAGE	-4
2-STAGE	-2
3-STAGE	-1
4-STAGE	0
<b>Impeller</b>	<b>ENCLOSED</b>
<b>Ns =</b>	<b>2000</b>
<b>K =</b>	<b>1.3</b>
Bowl O. D.	5.20 in
Bowl Lateral	0.5
Max. PSI	480
Disch size	3", 4"
<b>TURBINE OPERATIONS</b>	
Lubbock, Texas	
BOWL PERFORMANCE CURVE BASED ON PUMPING CLEAR, NON-AERATED WATER. RATED POINT ONLY IS GUARANTEED. CURVES REPRESENT SINGLE STAGE PERFORMANCE BASED ON TEST OF MULTI-STAGE BOWL ASSEMBLY. EFFICIENCY CORRECTION APPLIES TO HEAD, FLOW AND HORSEPOWER FOR LESSER STAGES.	

### MODEL 5THC (Effective July 1, 2014)



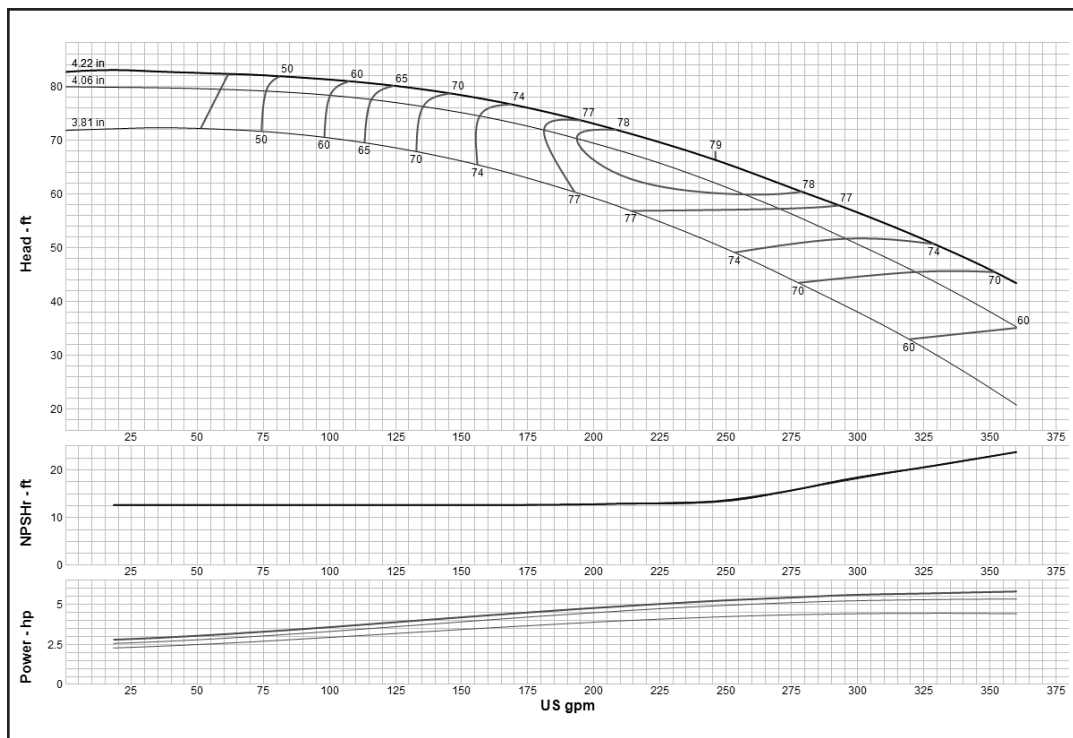
<b>Curve No. E6205TFPC1</b>	
<b>Model</b>	<b>5THC</b>
<b>RPM</b>	<b>3550</b>
EFFICIENCY CORRECTION	
1-STAGE	-3
2-STAGE	-2
3-STAGE	-1
4-STAGE	0
<b>Impeller</b>	<b>ENCLOSED</b>
<b>Ns =</b>	<b>3395</b>
<b>K =</b>	<b>2.36</b>
Bowl O. D.	5.20 in
Bowl Lateral	0.25
Max. PSI	480
Disch size	3", 4"
<b>TURBINE OPERATIONS</b>	
Lubbock, Texas	
BOWL PERFORMANCE CURVE BASED ON PUMPING CLEAR, NON-AERATED WATER. RATED POINT ONLY IS GUARANTEED. CURVES REPRESENT SINGLE STAGE PERFORMANCE BASED ON TEST OF MULTI-STAGE BOWL ASSEMBLY. EFFICIENCY CORRECTION APPLIES TO HEAD, FLOW AND HORSEPOWER FOR LESSER STAGES.	

### MODEL 5TLC (Effective July 1, 2014)



<b>Curve No. E6205TEPC0</b>	
<b>Model</b>	<b>5TLC</b>
<b>RPM</b>	<b>3550</b>
EFFICIENCY CORRECTION	
1-STAGE	-3
2-STAGE	-2
3-STAGE	-0.5
4-STAGE	0
<b>Impeller</b>	<b>ENCLOSED</b>
Ns =	<b>3314</b>
K =	<b>2.36</b>
Bowl O. D.	5.20 in
Bowl Lateral	0.25
Max. PSI	480
Disch size	3", 4"
<b>TURBINE OPERATIONS</b>	
Lubbock, Texas	
BOWL PERFORMANCE CURVE BASED ON PUMPING CLEAR, NON-AERATED WATER. RATED POINT ONLY IS GUARANTEED. CURVES REPRESENT SINGLE STAGE PERFORMANCE BASED ON TEST OF MULTI-STAGE BOWL ASSEMBLY. EFFICIENCY CORRECTION APPLIES TO HEAD, FLOW AND HORSEPOWER FOR LESSER STAGES.	

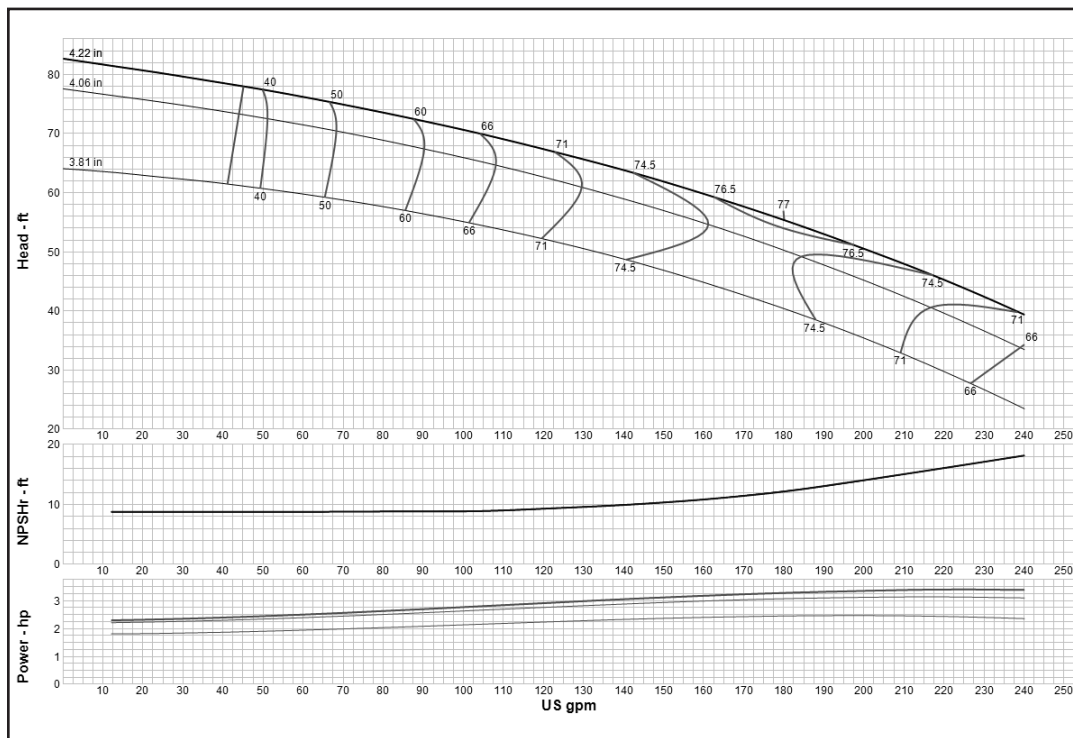
### MODEL 6CHC (Effective September 1, 2017)



<b>Curve No. E6206CCPC2</b>	
<b>Model</b>	<b>6CHC</b>
<b>RPM</b>	<b>3550</b>
EFFICIENCY CORRECTION	
1-STAGE	-3
2-STAGE	-2
3-STAGE	-0.5
4-STAGE	0
<b>Impeller</b>	<b>ENCLOSED</b>
Ns =	<b>2340</b>
K =	<b>2.1</b>
Bowl O. D.	5.88 in
Bowl Lateral	0.25
Max. PSI	420
Disch size	3", 4"
<b>TURBINE OPERATIONS</b>	
Lubbock, Texas	
BOWL PERFORMANCE CURVE BASED ON PUMPING CLEAR, NON-AERATED WATER. RATED POINT ONLY IS GUARANTEED. CURVES REPRESENT SINGLE STAGE PERFORMANCE BASED ON TEST OF MULTI-STAGE BOWL ASSEMBLY. EFFICIENCY CORRECTION APPLIES TO HEAD, FLOW AND HORSEPOWER FOR LESSER STAGES.	

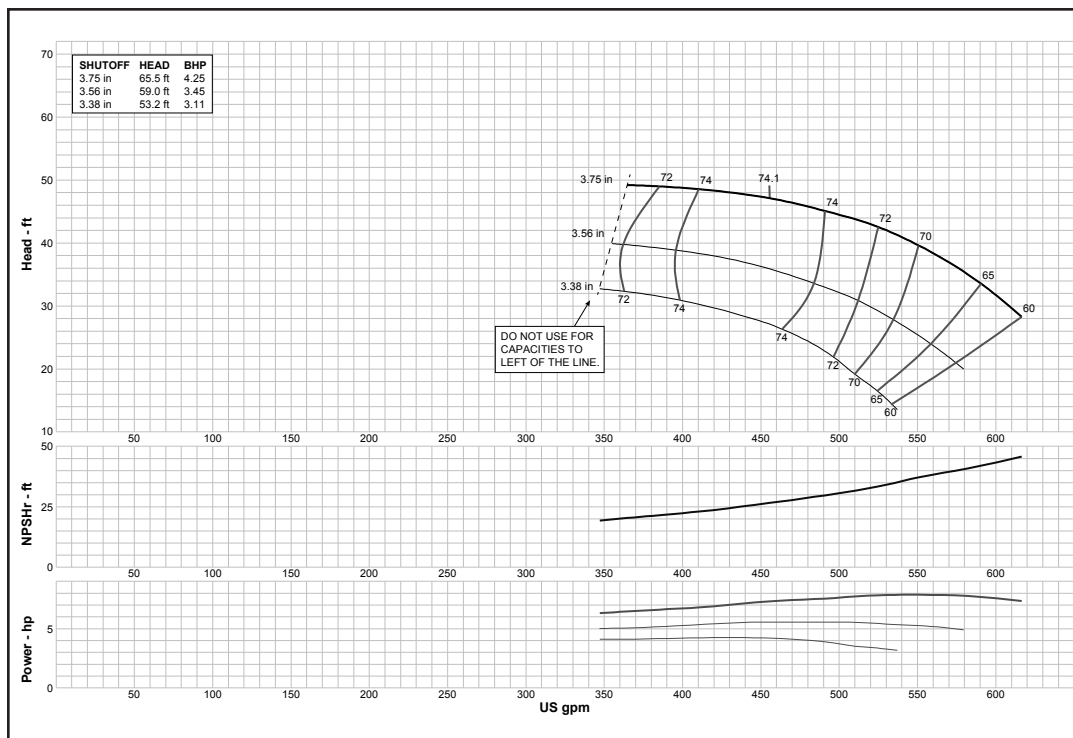
## Turbine

### MODEL 6CLC (Effective September 1, 2017)



<b>Curve No. E6206CFPC2</b>	
<b>Model</b>	<b>6CLC</b>
<b>RPM</b>	<b>3550</b>
EFFICIENCY CORRECTION	
1-STAGE	-3
2-STAGE	-2
3-STAGE	-0.5
4-STAGE	0
<b>Impeller</b>	<b>ENCLOSED</b>
<b>Ns =</b>	<b>2292</b>
<b>K =</b>	<b>2.1</b>
Bowl O. D.	5.88 in
Bowl Lateral	0.25
Max. PSI	420
Disch size	3", 4"
<b>TURBINE OPERATIONS</b>	
Lubbock, Texas	
BOWL PERFORMANCE CURVE BASED ON PUMPING CLEAR, NON-AERATED WATER. RATED POINT ONLY IS GUARANTEED. CURVES REPRESENT SINGLE STAGE PERFORMANCE BASED ON TEST OF MULTI-STAGE BOWL ASSEMBLY. EFFICIENCY CORRECTION APPLIES TO HEAD, FLOW AND HORSEPOWER FOR LESSER STAGES.	

### MODEL 6DHHC (Effective July 1, 2014)

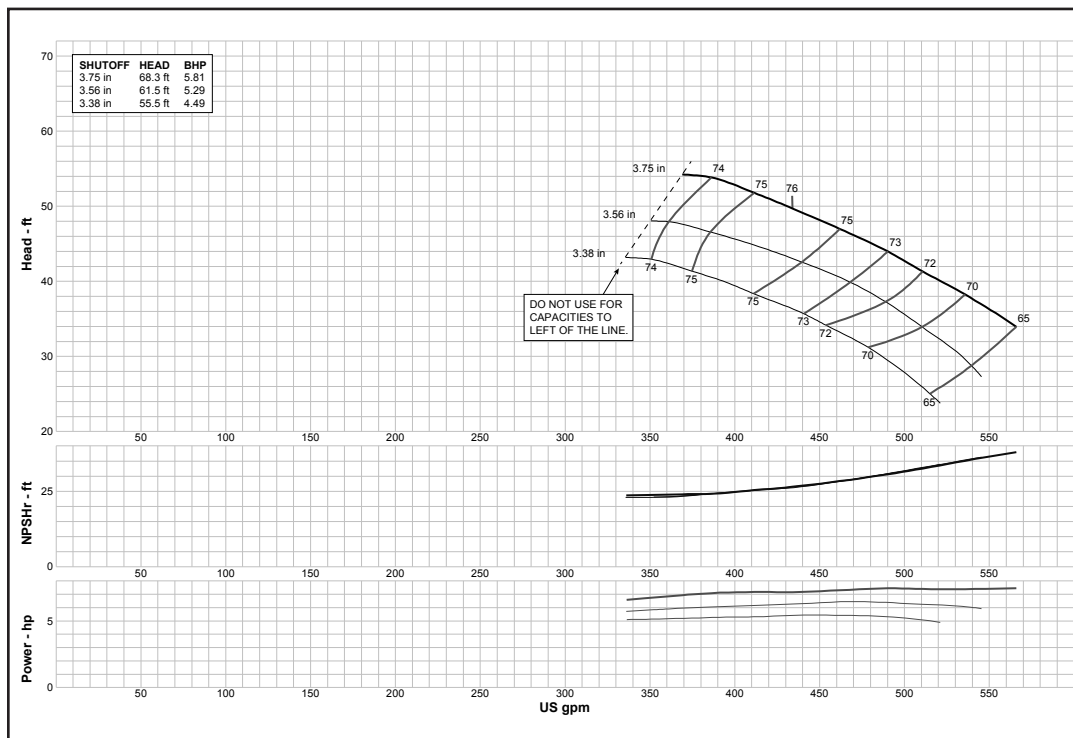


<b>Curve No. E6206DCPCO</b>	
<b>Model</b>	<b>6DHHC</b>
<b>RPM</b>	<b>3550</b>
EFFICIENCY CORRECTION	
1-STAGE	-3
2-STAGE	-2
3-STAGE	-0.5
4-STAGE	0
<b>Impeller</b>	<b>ENCLOSED</b>
<b>Ns =</b>	<b>3950</b>
<b>K =</b>	<b>5.6</b>
Bowl O. D.	5.50 in
Bowl Lateral	0.56
Max. PSI	200
Disch size	3", 4"
<b>TURBINE OPERATIONS</b>	
Lubbock, Texas	
BOWL PERFORMANCE CURVE BASED ON PUMPING CLEAR, NON-AERATED WATER. RATED POINT ONLY IS GUARANTEED. CURVES REPRESENT SINGLE STAGE PERFORMANCE BASED ON TEST OF MULTI-STAGE BOWL ASSEMBLY. EFFICIENCY CORRECTION APPLIES TO HEAD, FLOW AND HORSEPOWER FOR LESSER STAGES.	



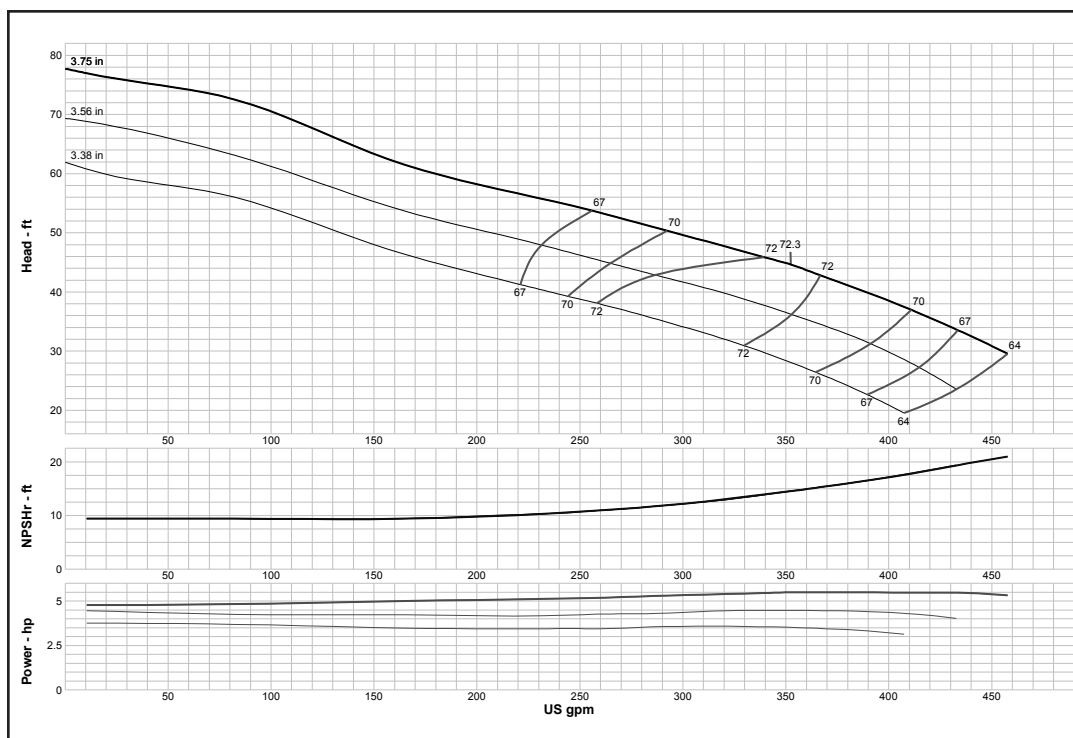
## Turbine

### MODEL 6DHHO (Effective July 1, 2014)



<b>Curve No. E6206DDPC2</b>	
<b>Model</b>	<b>6DHHO</b>
<b>RPM</b>	<b>3550</b>
EFFICIENCY CORRECTION	
1-STAGE	-3
2-STAGE	-2
3-STAGE	-1
4-STAGE	0
<b>Impeller</b>	<b>OPEN</b>
<b>Ns =</b>	<b>3950</b>
<b>K =</b>	<b>5.6</b>
Bowl O. D.	5.50 in
Bowl Lateral	0.56
Max. PSI	200
Disch size	3", 4"
<b>TURBINE OPERATIONS</b>	
Lubbock, Texas	
BOWL PERFORMANCE CURVE BASED ON PUMPING CLEAR, NON-AERATED WATER. RATED POINT ONLY IS GUARANTEED. CURVES REPRESENT SINGLE STAGE PERFORMANCE BASED ON TEST OF MULTI-STAGE BOWL ASSEMBLY. EFFICIENCY CORRECTION APPLIES TO HEAD, FLOW AND HORSEPOWER FOR LESSER STAGES.	

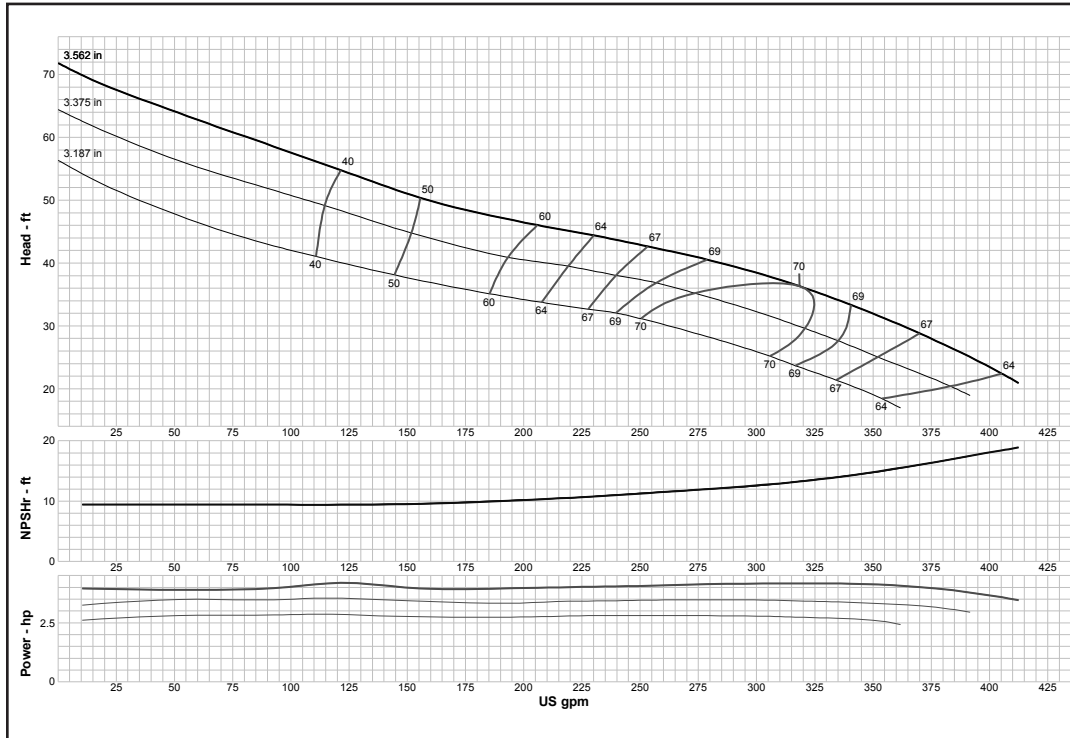
### MODEL 6DHLC (Effective July 1, 2014)



<b>Curve No. E6206DEPCO</b>	
<b>Model</b>	<b>6DHLC</b>
<b>RPM</b>	<b>3550</b>
EFFICIENCY CORRECTION	
1-STAGE	-3
2-STAGE	-2
3-STAGE	-0.5
4-STAGE	0
<b>Impeller</b>	<b>ENCLOSED</b>
<b>Ns =</b>	<b>4280</b>
<b>K =</b>	<b>5.6</b>
Bowl O. D.	5.50 in
Bowl Lateral	0.56
Max. PSI	200
Disch size	3", 4"
<b>TURBINE OPERATIONS</b>	
Lubbock, Texas	
BOWL PERFORMANCE CURVE BASED ON PUMPING CLEAR, NON-AERATED WATER. RATED POINT ONLY IS GUARANTEED. CURVES REPRESENT SINGLE STAGE PERFORMANCE BASED ON TEST OF MULTI-STAGE BOWL ASSEMBLY. EFFICIENCY CORRECTION APPLIES TO HEAD, FLOW AND HORSEPOWER FOR LESSER STAGES.	

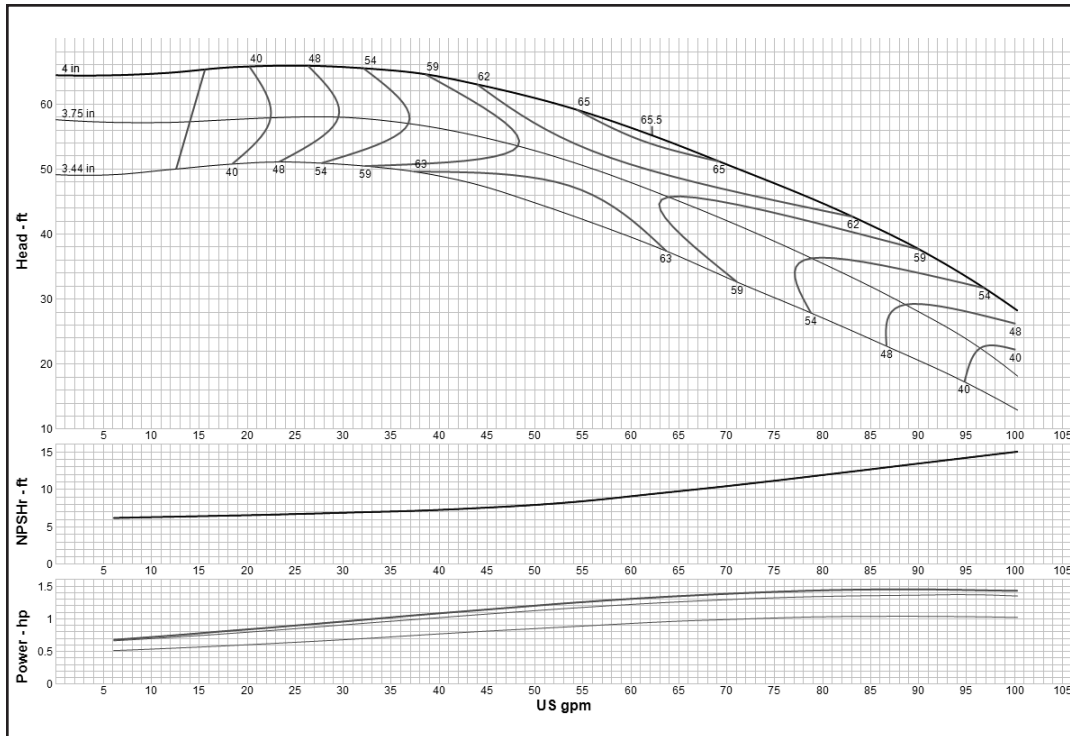
## Turbine

### MODEL 6DHLO (Effective July 1, 2014)



<b>Curve No. E6206DFPC1</b>	
<b>Model</b>	<b>6DHLO</b>
<b>RPM</b>	<b>3550</b>
EFFICIENCY CORRECTION	
1-STAGE	-3
2-STAGE	-2
3-STAGE	-1
4-STAGE	0
<b>Impeller</b>	<b>OPEN</b>
<b>Ns =</b>	<b>4280</b>
<b>K =</b>	<b>5.6</b>
Bowl O. D.	5.50 in
Bowl Lateral	0.56
Max. PSI	200
Disch size	3", 4"
<b>TURBINE OPERATIONS</b>	
Lubbock, Texas	
BOWL PERFORMANCE CURVE BASED ON PUMPING CLEAR, NON-AERATED WATER. RATED POINT ONLY IS GUARANTEED. CURVES REPRESENT SINGLE STAGE PERFORMANCE BASED ON TEST OF MULTI-STAGE BOWL ASSEMBLY. EFFICIENCY CORRECTION APPLIES TO HEAD, FLOW AND HORSEPOWER FOR LESSER STAGES.	

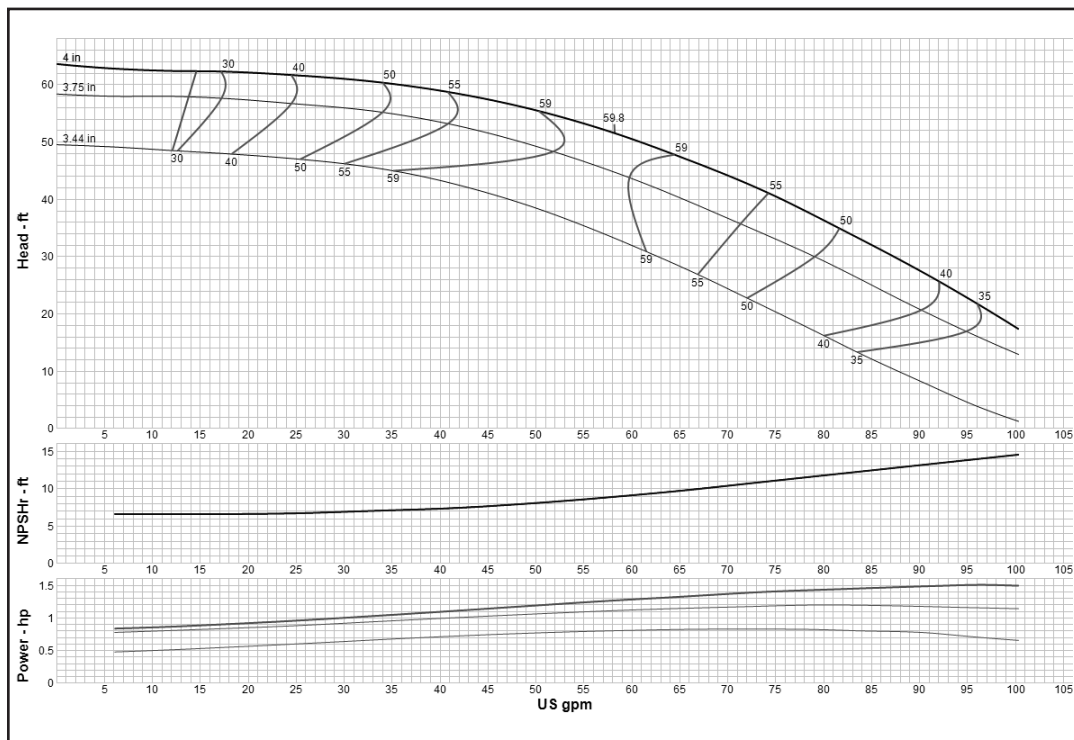
### MODEL 6RAHC (Effective September 1, 2017)



<b>Curve No. E6206AAPC4</b>	
<b>Model</b>	<b>6RAHC</b>
<b>RPM</b>	<b>3550</b>
EFFICIENCY CORRECTION	
1-STAGE	-4
2-STAGE	-2
3-STAGE	-1
4-STAGE	0
<b>Impeller</b>	<b>ENCLOSED</b>
<b>Ns =</b>	<b>1450</b>
<b>K =</b>	<b>1.18</b>
Bowl O. D.	5.50 in
Bowl Lateral	0.25
Max. PSI	430
Disch size	3", 4"
<b>TURBINE OPERATIONS</b>	
Lubbock, Texas	
BOWL PERFORMANCE CURVE BASED ON PUMPING CLEAR, NON-AERATED WATER. RATED POINT ONLY IS GUARANTEED. CURVES REPRESENT SINGLE STAGE PERFORMANCE BASED ON TEST OF MULTI-STAGE BOWL ASSEMBLY. EFFICIENCY CORRECTION APPLIES TO HEAD, FLOW AND HORSEPOWER FOR LESSER STAGES.	

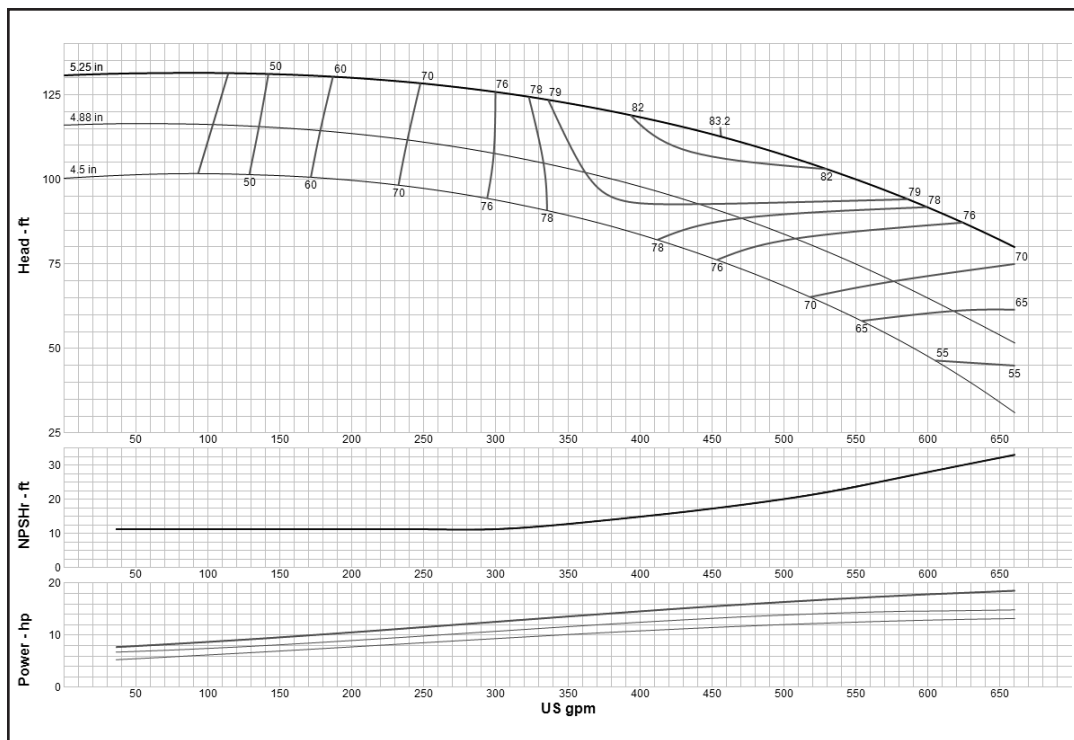
## Turbine

### MODEL 6RALC (Effective September 1, 2017)



<b>Curve No. E6206ACPC4</b>	
<b>Model</b>	<b>6RALC</b>
<b>RPM</b>	<b>3550</b>
EFFICIENCY CORRECTION	
1-STAGE	-4
2-STAGE	-2
3-STAGE	-1
4-STAGE	0
<b>Impeller</b>	<b>ENCLOSED</b>
<b>Ns =</b>	<b>1270</b>
<b>K =</b>	<b>1.18</b>
Bowl O. D.	5.50 in
Bowl Lateral	0.25
Max. PSI	430
Disch size	3", 4"
<b>TURBINE OPERATIONS</b>	
Lubbock, Texas	
BOWL PERFORMANCE CURVE BASED ON PUMPING CLEAR, NON-AERATED WATER. RATED POINT ONLY IS GUARANTEED. CURVES REPRESENT SINGLE STAGE PERFORMANCE BASED ON TEST OF MULTI-STAGE BOWL ASSEMBLY. EFFICIENCY CORRECTION APPLIES TO HEAD, FLOW AND HORSEPOWER FOR LESSER STAGES.	

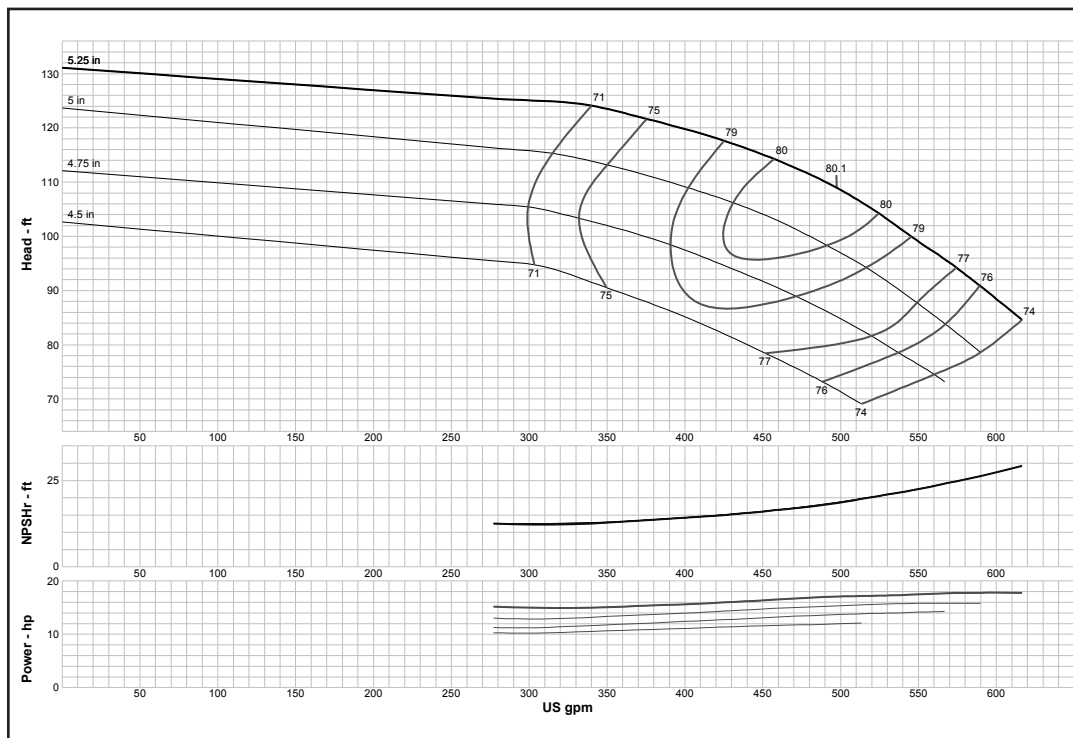
### MODEL 7CHC (Effective September 1, 2017)



<b>Curve No. E6207CCPC2</b>	
<b>Model</b>	<b>7CHC</b>
<b>RPM</b>	<b>3550</b>
EFFICIENCY CORRECTION	
1-STAGE	-3
2-STAGE	-1
3-STAGE	0
4-STAGE	0
<b>Impeller</b>	<b>ENCLOSED</b>
<b>Ns =</b>	<b>2210</b>
<b>K =</b>	<b>3.5</b>
Bowl O. D.	7.13 in
Bowl Lateral	0.5
Max. PSI	415
Disch size	4", 5", 6"
<b>TURBINE OPERATIONS</b>	
Lubbock, Texas	
BOWL PERFORMANCE CURVE BASED ON PUMPING CLEAR, NON-AERATED WATER. RATED POINT ONLY IS GUARANTEED. CURVES REPRESENT SINGLE STAGE PERFORMANCE BASED ON TEST OF MULTI-STAGE BOWL ASSEMBLY. EFFICIENCY CORRECTION APPLIES TO HEAD, FLOW AND HORSEPOWER FOR LESSER STAGES.	

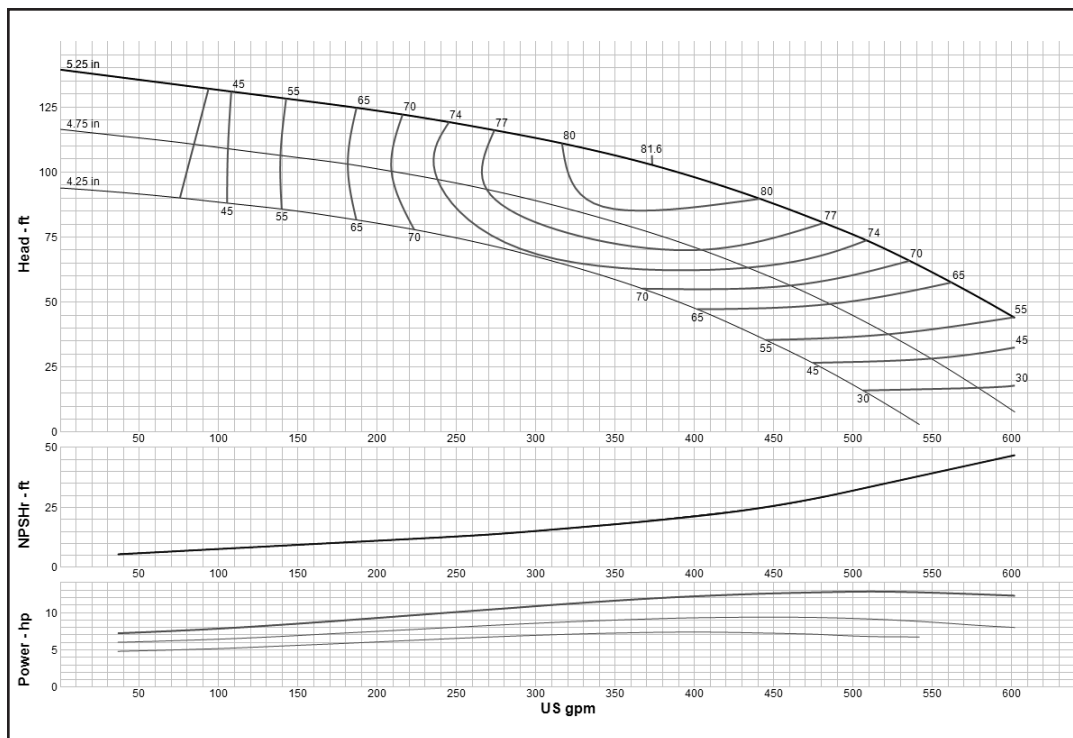
## Turbine

### MODEL 7CHO (Effective July 1, 2014)



<b>Curve No. E6207CHPC0</b>	
<b>Model</b>	<b>7CHO</b>
<b>RPM</b>	<b>3550</b>
EFFICIENCY CORRECTION	
1-STAGE	-2
2-STAGE	-1
3-STAGE	-0.5
4-STAGE	0
<b>Impeller</b>	<b>OPEN</b>
<b>Ns =</b>	<b>2300</b>
<b>K =</b>	<b>3.8</b>
Bowl O. D.	7.13 in
Bowl Lateral	0.5
Max. PSI	415
Disch size	4", 5", 6"
<b>TURBINE OPERATIONS</b>	
Lubbock, Texas	
BOWL PERFORMANCE CURVE BASED ON PUMPING CLEAR, NON-AERATED WATER. RATED POINT ONLY IS GUARANTEED. CURVES REPRESENT SINGLE STAGE PERFORMANCE BASED ON TEST OF MULTI-STAGE BOWL ASSEMBLY. EFFICIENCY CORRECTION APPLIES TO HEAD, FLOW AND HORSEPOWER FOR LESSER STAGES.	

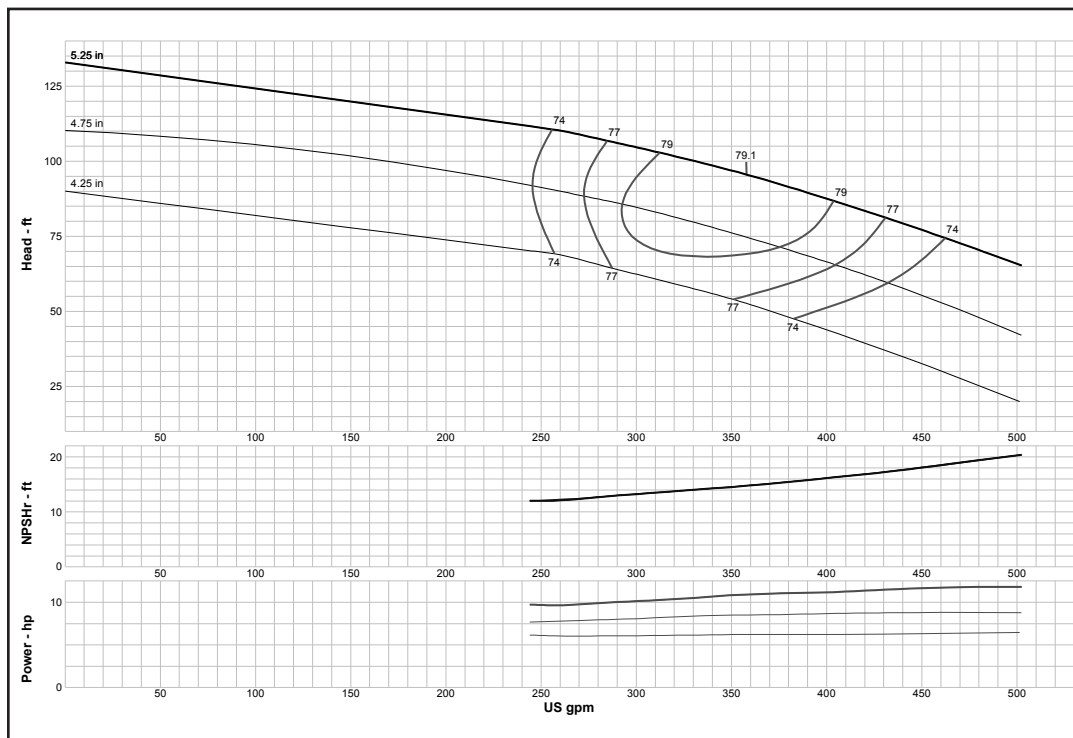
### MODEL 7CLC (Effective September 1, 2017)



<b>Curve No. E6207CFPC1</b>	
<b>Model</b>	<b>7CLC</b>
<b>RPM</b>	<b>3550</b>
EFFICIENCY CORRECTION	
1-STAGE	-3
2-STAGE	-1
3-STAGE	0
4-STAGE	0
<b>Impeller</b>	<b>ENCLOSED</b>
<b>Ns =</b>	<b>2422</b>
<b>K =</b>	<b>3.5</b>
Bowl O. D.	7.13 in
Bowl Lateral	0.5
Max. PSI	415
Disch size	4", 5", 6"
<b>TURBINE OPERATIONS</b>	
Lubbock, Texas	
BOWL PERFORMANCE CURVE BASED ON PUMPING CLEAR, NON-AERATED WATER. RATED POINT ONLY IS GUARANTEED. CURVES REPRESENT SINGLE STAGE PERFORMANCE BASED ON TEST OF MULTI-STAGE BOWL ASSEMBLY. EFFICIENCY CORRECTION APPLIES TO HEAD, FLOW AND HORSEPOWER FOR LESSER STAGES.	

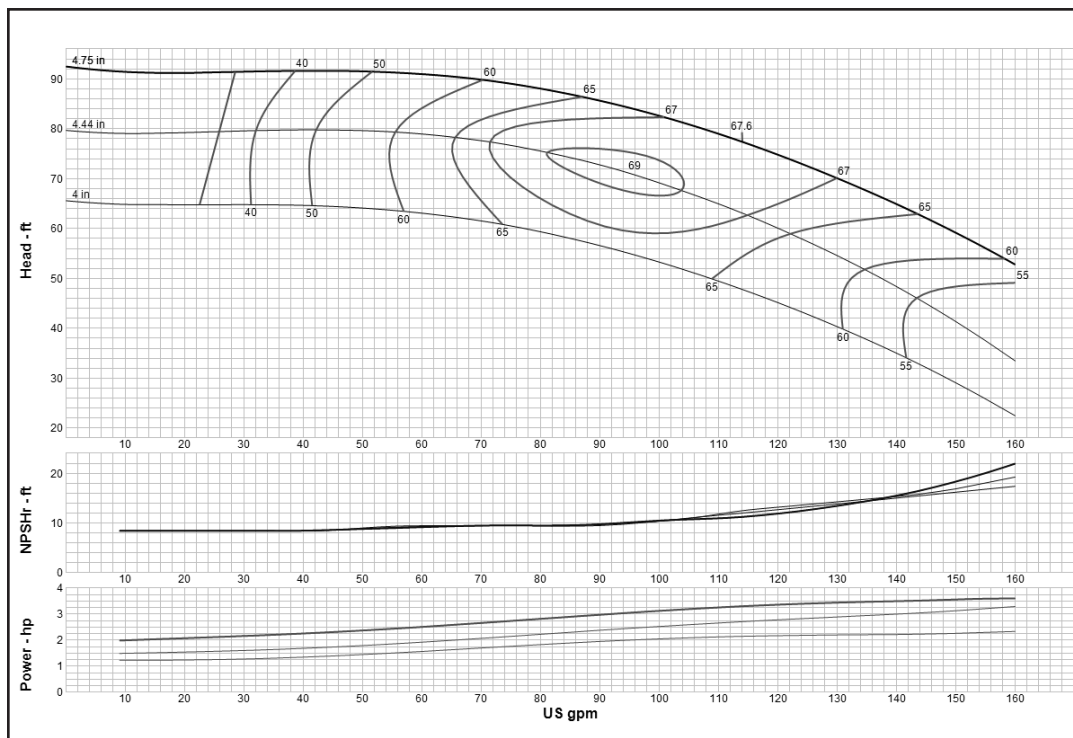
## Turbine

### MODEL 7CLO (Effective July 1, 2014)



<b>Curve No. E6207CJPC0</b>	
<b>Model</b>	<b>7CLO</b>
<b>RPM</b>	<b>3550</b>
EFFICIENCY CORRECTION	
1-STAGE	-2
2-STAGE	-1
3-STAGE	-0.5
4-STAGE	0
<b>Impeller</b>	<b>OPEN</b>
<b>Ns =</b>	<b>2160</b>
<b>K =</b>	<b>3.8</b>
Bowl O. D.	7.13 in
Bowl Lateral	0.5
Max. PSI	415
Disch size	4", 5", 6"
<b>TURBINE OPERATIONS</b>	
Lubbock, Texas	
BOWL PERFORMANCE CURVE BASED ON PUMPING CLEAR, NON-AERATED WATER. RATED POINT ONLY IS GUARANTEED. CURVES REPRESENT SINGLE STAGE PERFORMANCE BASED ON TEST OF MULTI-STAGE BOWL ASSEMBLY. EFFICIENCY CORRECTION APPLIES TO HEAD, FLOW AND HORSEPOWER FOR LESSER STAGES.	

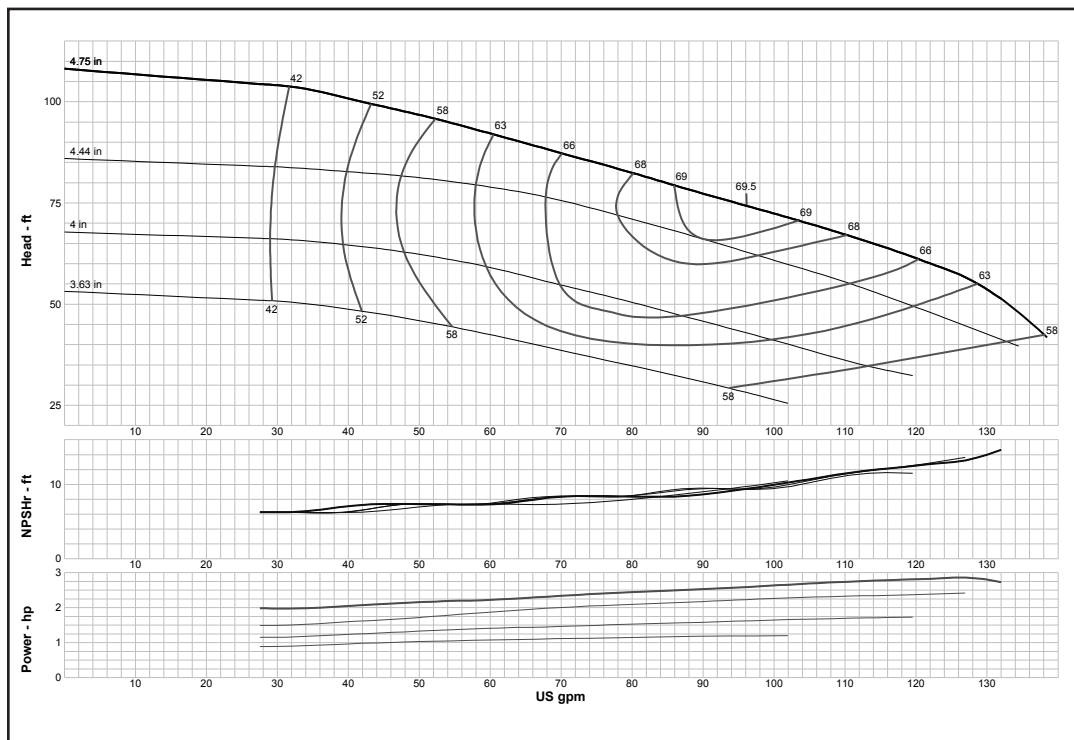
### MODEL 7RAHC (Effective September 1, 2017)



<b>Curve No. E6207RAPC1</b>	
<b>Model</b>	<b>7RAHC</b>
<b>RPM</b>	<b>3550</b>
EFFICIENCY CORRECTION	
1-STAGE	-4
2-STAGE	-2
3-STAGE	-1
4-STAGE	0
<b>Impeller</b>	<b>ENCLOSED</b>
<b>Ns =</b>	<b>1290</b>
<b>K =</b>	<b>1.61</b>
Bowl O. D.	7.50 in
Bowl Lateral	0.25
Max. PSI	430
Disch size	3", 4"
<b>TURBINE OPERATIONS</b>	
Lubbock, Texas	
BOWL PERFORMANCE CURVE BASED ON PUMPING CLEAR, NON-AERATED WATER. RATED POINT ONLY IS GUARANTEED. CURVES REPRESENT SINGLE STAGE PERFORMANCE BASED ON TEST OF MULTI-STAGE BOWL ASSEMBLY. EFFICIENCY CORRECTION APPLIES TO HEAD, FLOW AND HORSEPOWER FOR LESSER STAGES.	

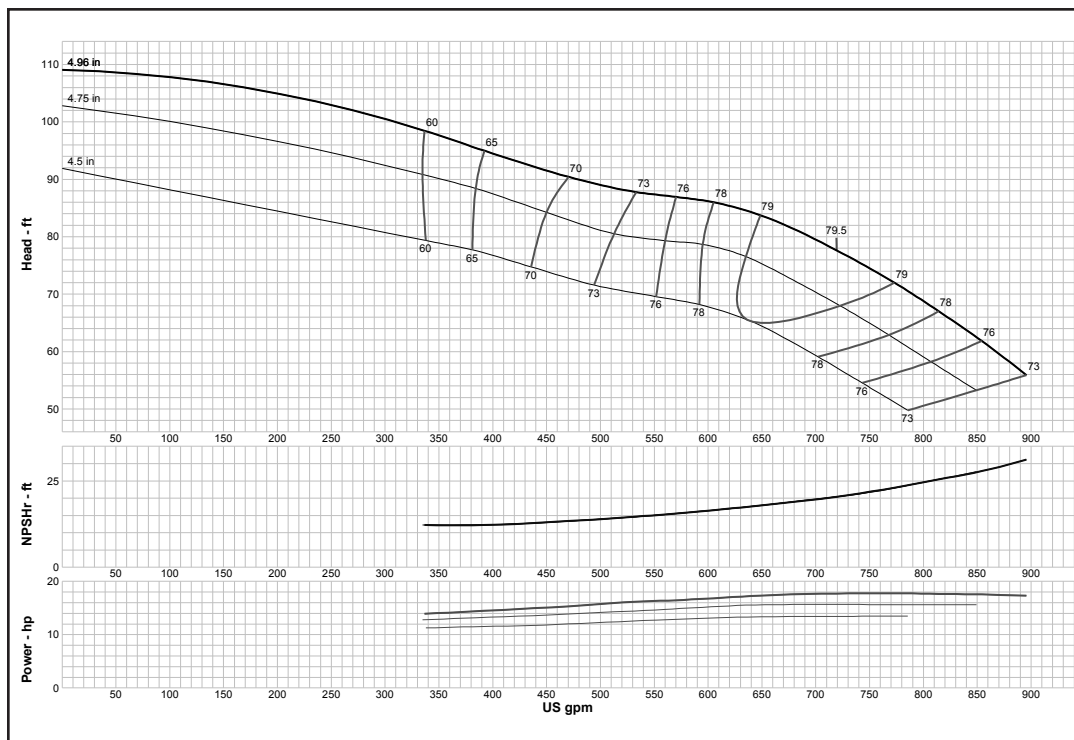
## Turbine

### MODEL 7RALC (Effective July 1, 2014)



<b>Curve No. E6207RBPC1</b>	
<b>Model</b>	<b>7RALC</b>
<b>RPM</b>	<b>3550</b>
EFFICIENCY CORRECTION	
1-STAGE	-4
2-STAGE	-2
3-STAGE	-1
4-STAGE	0
<b>Impeller</b>	<b>ENCLOSED</b>
<b>Ns =</b>	<b>1325</b>
<b>K =</b>	<b>1.61</b>
Bowl O. D.	7.50 in
Bowl Lateral	0.25
Max. PSI	430
Disch size	3", 4"
<b>TURBINE OPERATIONS</b>	
Lubbock, Texas	
BOWL PERFORMANCE CURVE BASED ON PUMPING CLEAR, NON-AERATED WATER. RATED POINT ONLY IS GUARANTEED. CURVES REPRESENT SINGLE STAGE PERFORMANCE BASED ON TEST OF MULTI-STAGE BOWL ASSEMBLY. EFFICIENCY CORRECTION APPLIES TO HEAD, FLOW AND HORSEPOWER FOR LESSER STAGES.	

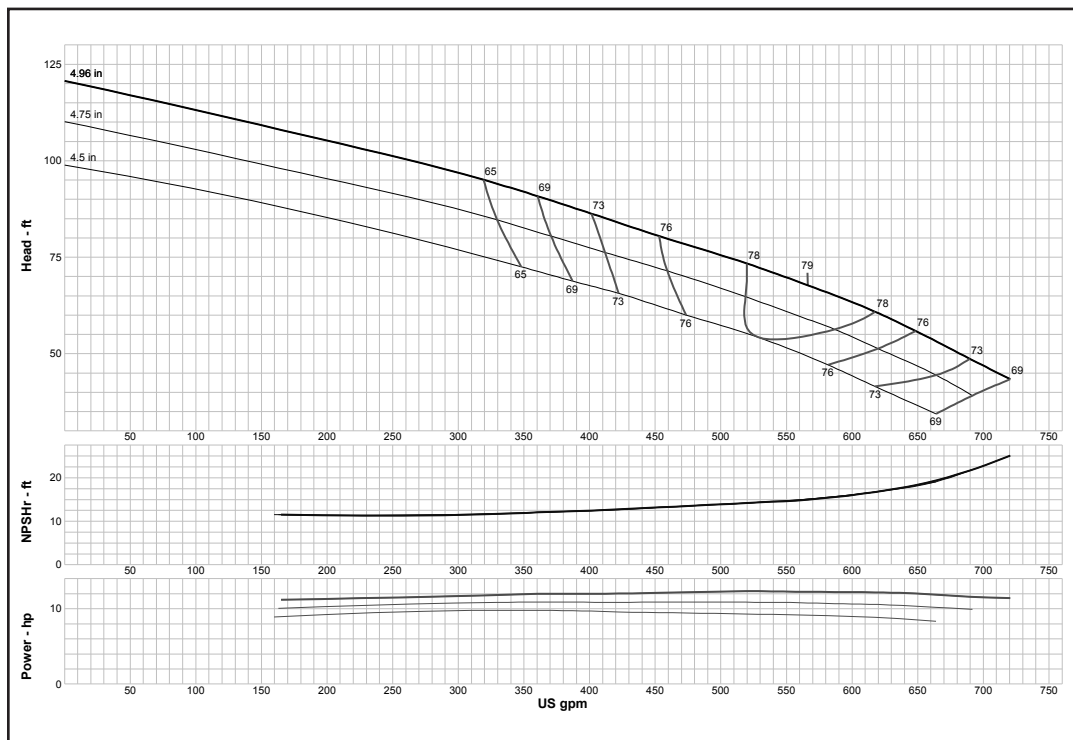
### MODEL 7THC (Effective July 1, 2014)



<b>Curve No. E6207TFPC2</b>	
<b>Model</b>	<b>7THC</b>
<b>RPM</b>	<b>3550</b>
EFFICIENCY CORRECTION	
1-STAGE	-3
2-STAGE	-2
3-STAGE	-1
4-STAGE	0
<b>Impeller</b>	<b>ENCLOSED</b>
<b>Ns =</b>	<b>3655</b>
<b>K =</b>	<b>4.56</b>
Bowl O. D.	7.13 in
Bowl Lateral	0.38
Max. PSI	310
Disch size	5", 6"
<b>TURBINE OPERATIONS</b>	
Lubbock, Texas	
BOWL PERFORMANCE CURVE BASED ON PUMPING CLEAR, NON-AERATED WATER. RATED POINT ONLY IS GUARANTEED. CURVES REPRESENT SINGLE STAGE PERFORMANCE BASED ON TEST OF MULTI-STAGE BOWL ASSEMBLY. EFFICIENCY CORRECTION APPLIES TO HEAD, FLOW AND HORSEPOWER FOR LESSER STAGES.	

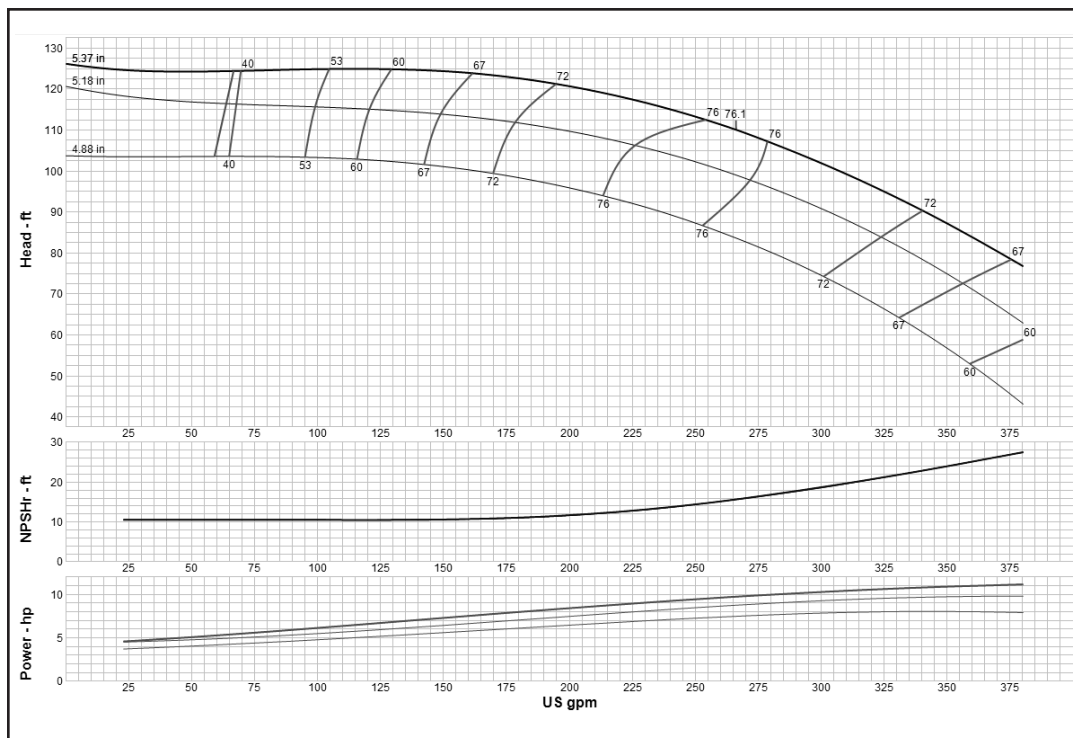
## Turbine

### MODEL 7TLC (Effective July 1, 2014)



<b>Curve No. E6207TAPC2</b>	
<b>Model</b>	<b>7TLC</b>
<b>RPM</b>	<b>3550</b>
EFFICIENCY CORRECTION	
1-STAGE	-3
2-STAGE	-2
3-STAGE	-1
4-STAGE	0
<b>Impeller</b>	<b>ENCLOSED</b>
Ns =	<b>3575</b>
K =	<b>4.5</b>
Bowl O. D.	7.13 in
Bowl Lateral	0.38
Max. PSI	310
Disch size	5", 6"
<b>TURBINE OPERATIONS</b>	
Lubbock, Texas	
BOWL PERFORMANCE CURVE BASED ON PUMPING CLEAR, NON-AERATED WATER. RATED POINT ONLY IS GUARANTEED. CURVES REPRESENT SINGLE STAGE PERFORMANCE BASED ON TEST OF MULTI-STAGE BOWL ASSEMBLY. EFFICIENCY CORRECTION APPLIES TO HEAD, FLOW AND HORSEPOWER FOR LESSER STAGES.	

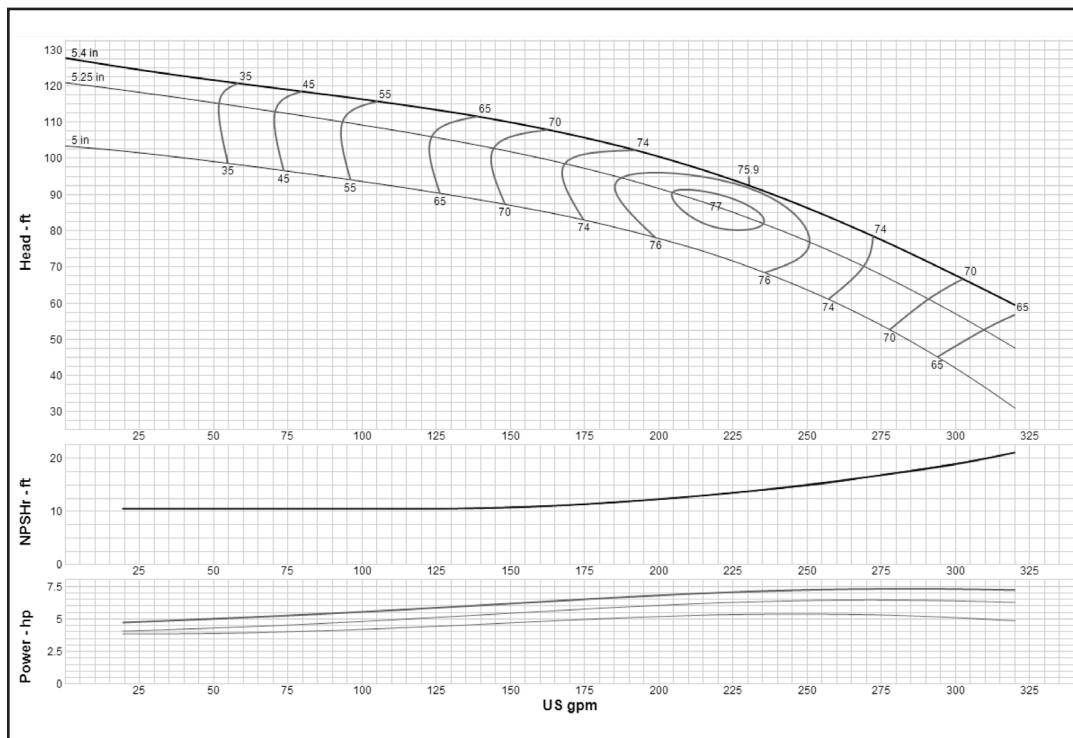
### MODEL 7WAHC (Effective September 1, 2017)



<b>Curve No. E6207WAPC1</b>	
<b>Model</b>	<b>7WAHC</b>
<b>RPM</b>	<b>3550</b>
EFFICIENCY CORRECTION	
1-STAGE	-2
2-STAGE	-1
3-STAGE	-0.5
4-STAGE	0
<b>Impeller</b>	<b>ENCLOSED</b>
Ns =	<b>1567</b>
K =	<b>2.63</b>
Bowl O. D.	7.13 in
Bowl Lateral	0.5
Max. PSI	365
Disch size	4", 5", 6"
<b>TURBINE OPERATIONS</b>	
Lubbock, Texas	
BOWL PERFORMANCE CURVE BASED ON PUMPING CLEAR, NON-AERATED WATER. RATED POINT ONLY IS GUARANTEED. CURVES REPRESENT SINGLE STAGE PERFORMANCE BASED ON TEST OF MULTI-STAGE BOWL ASSEMBLY. EFFICIENCY CORRECTION APPLIES TO HEAD, FLOW AND HORSEPOWER FOR LESSER STAGES.	

## Turbine

### MODEL 7WALC (Effective September 1, 2017)



**Curve No. E6207WBPCO**

**Model 7WALC**

**RPM 3550**

EFFICIENCY CORRECTION

1-STAGE	-2
2-STAGE	-1
3-STAGE	-0.5
4-STAGE	0

**Impeller ENCLOSED**

**Ns = 1655**

**K = 2.63**

Bowl O. D. 7.13 in

Bowl Lateral 0.5

Max. PSI 365

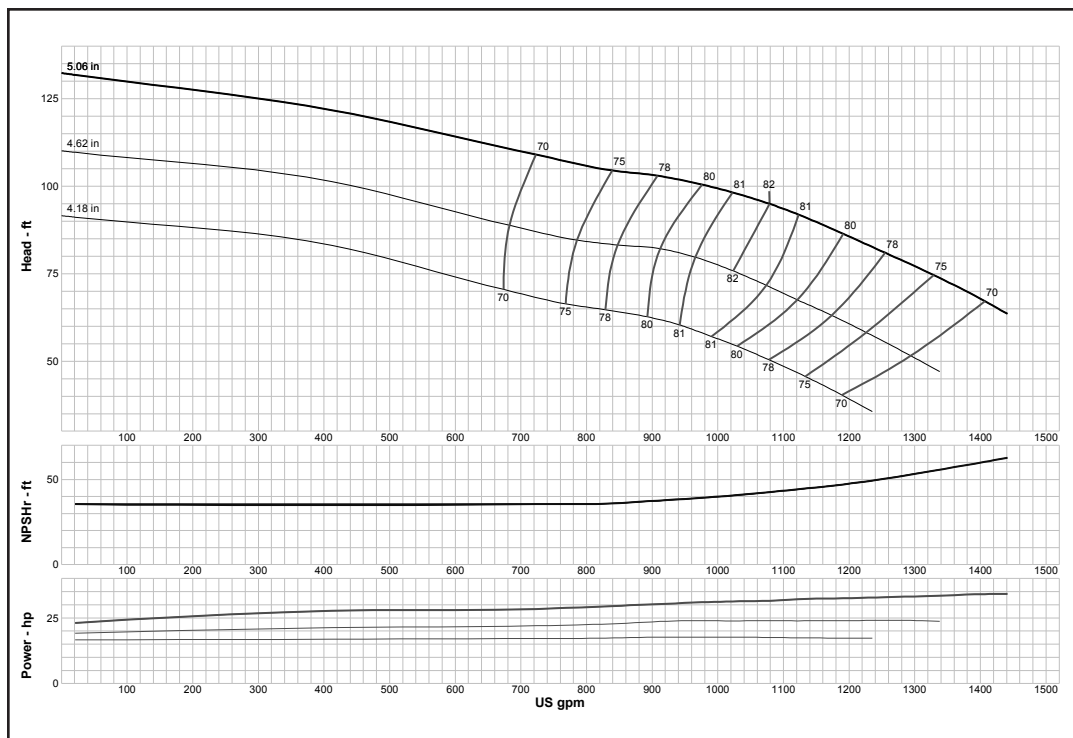
Disch size 4", 5", 6"

**TURBINE OPERATIONS**

Lubbock, Texas

BOWL PERFORMANCE CURVE BASED ON PUMPING CLEAR, NON-AERATED WATER. RATED POINT ONLY IS GUARANTEED. CURVES REPRESENT SINGLE STAGE PERFORMANCE BASED ON TEST OF MULTI-STAGE BOWL ASSEMBLY. EFFICIENCY CORRECTION APPLIES TO HEAD, FLOW AND HORSEPOWER FOR LESSER STAGES.

### MODEL 8FDHC (Effective July 1, 2014)



**Curve No. E6208FDPCO**

**Model 8FDHC**

**RPM 3550**

EFFICIENCY CORRECTION

1-STAGE	-4
2-STAGE	-2
3-STAGE	-1
4-STAGE	0

**Impeller ENCLOSED**

**Ns = 3850**

**K = 7.9**

Bowl O. D. 7.31 in

Bowl Lateral 0.56

Max. PSI 400

Disch size 5", 6"

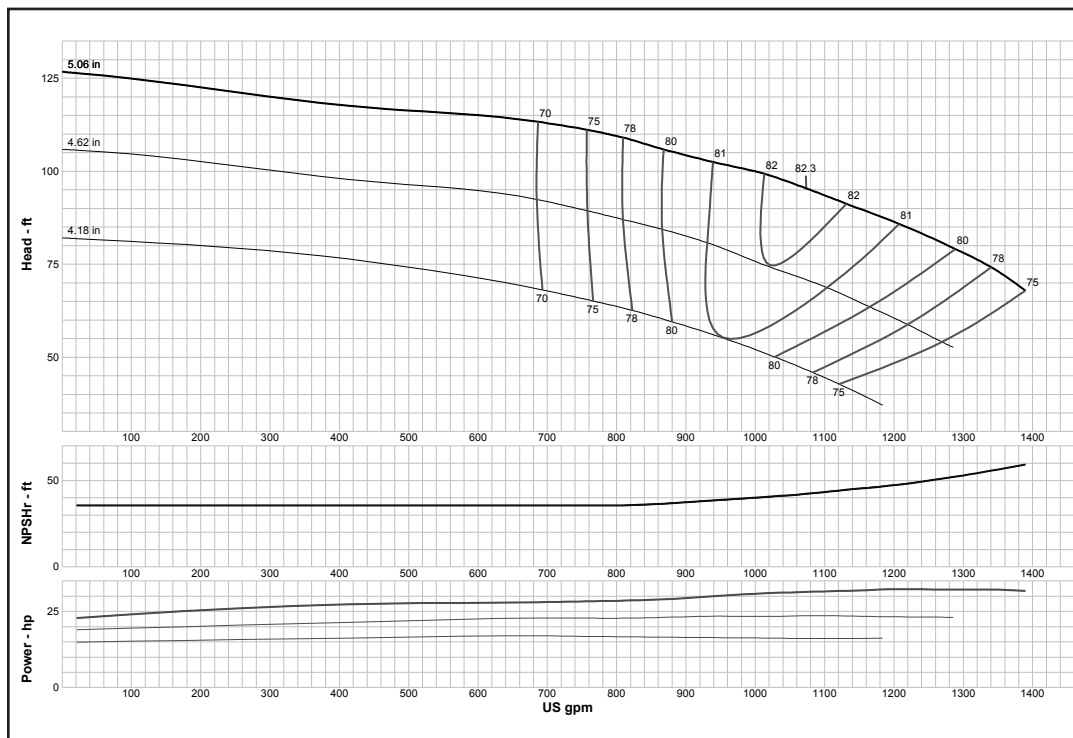
**TURBINE OPERATIONS**

Lubbock, Texas

BOWL PERFORMANCE CURVE BASED ON PUMPING CLEAR, NON-AERATED WATER. RATED POINT ONLY IS GUARANTEED. CURVES REPRESENT SINGLE STAGE PERFORMANCE BASED ON TEST OF MULTI-STAGE BOWL ASSEMBLY. EFFICIENCY CORRECTION APPLIES TO HEAD, FLOW AND HORSEPOWER FOR LESSER STAGES.

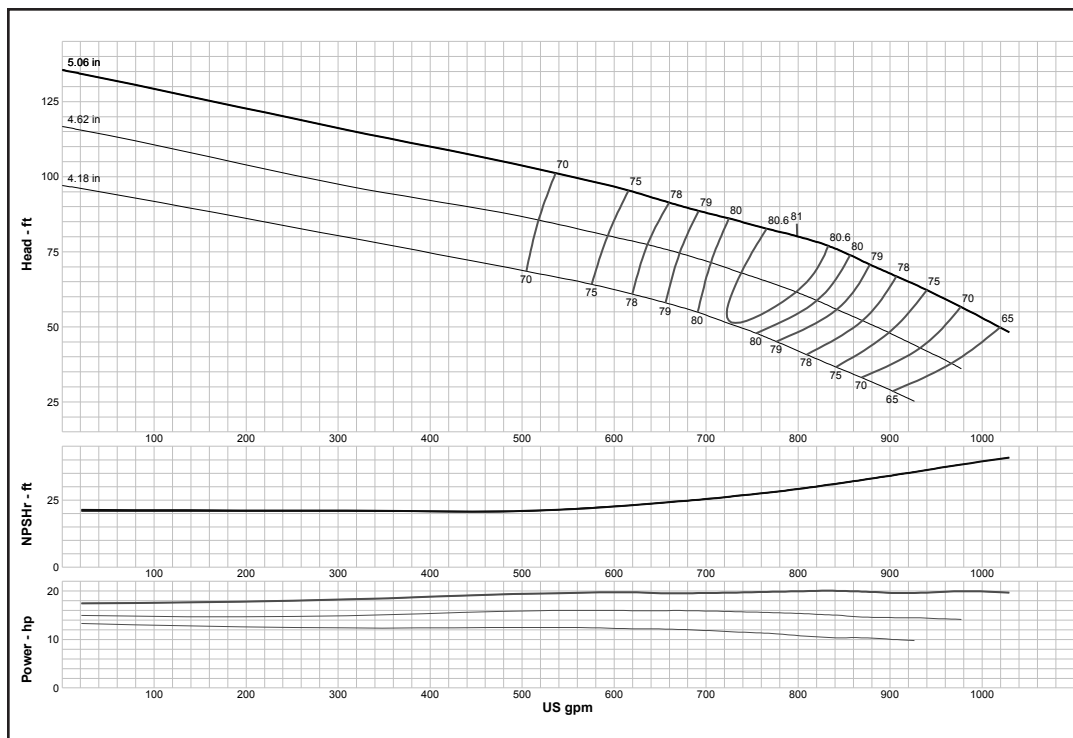


### MODEL 8FDHO (Effective July 1, 2014)



<b>Curve No. E6208FEPC0</b>	
<b>Model</b>	<b>8FDHO</b>
<b>RPM</b>	<b>3550</b>
EFFICIENCY CORRECTION	
1-STAGE	-3
2-STAGE	-1.5
3-STAGE	-1
4-STAGE	0
<b>Impeller</b>	<b>OPEN</b>
<b>Ns =</b>	<b>3850</b>
<b>K =</b>	<b>9.9</b>
Bowl O. D.	7.31 in
Bowl Lateral	0.56
Max. PSI	400
Disch size	5", 6"
<b>TURBINE OPERATIONS</b>	
Lubbock, Texas	
BOWL PERFORMANCE CURVE BASED ON PUMPING CLEAR, NON-AERATED WATER. RATED POINT ONLY IS GUARANTEED. CURVES REPRESENT SINGLE STAGE PERFORMANCE BASED ON TEST OF MULTI-STAGE BOWL ASSEMBLY. EFFICIENCY CORRECTION APPLIES TO HEAD, FLOW AND HORSEPOWER FOR LESSER STAGES.	

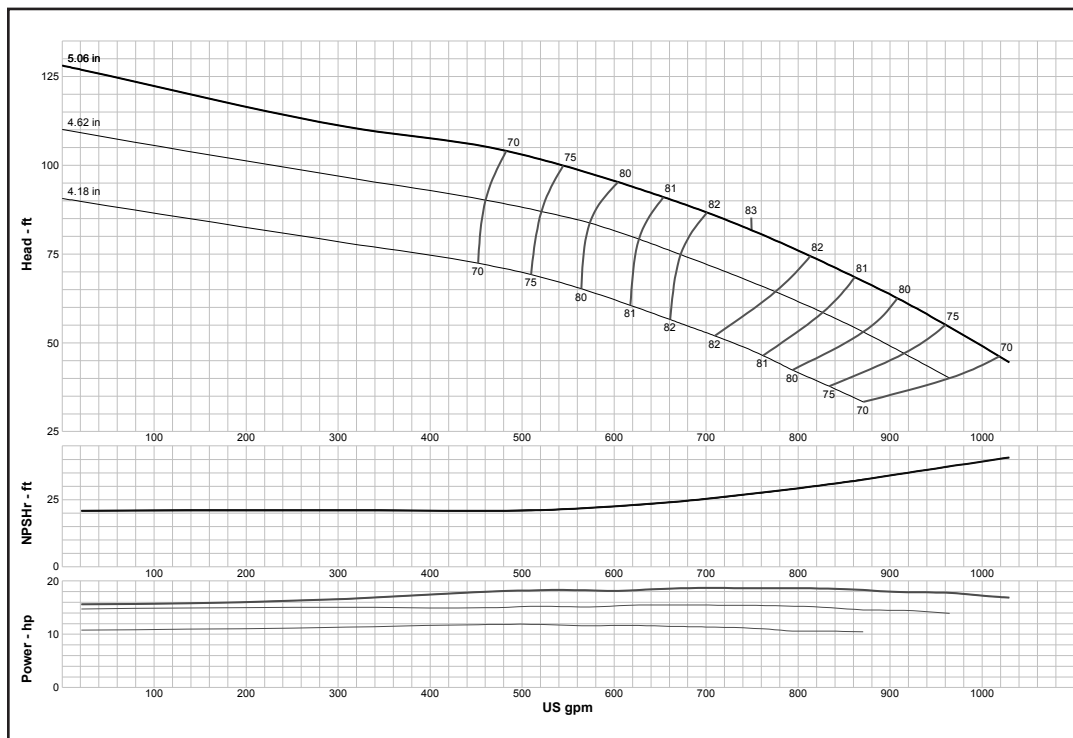
### MODEL 8FDLC (Effective July 1, 2014)



<b>Curve No. E6208FFPC0</b>	
<b>Model</b>	<b>8FDLC</b>
<b>RPM</b>	<b>3550</b>
EFFICIENCY CORRECTION	
1-STAGE	-3
2-STAGE	-1.5
3-STAGE	-1
4-STAGE	0
<b>Impeller</b>	<b>ENCLOSED</b>
<b>Ns =</b>	<b>3750</b>
<b>K =</b>	<b>7.9</b>
Bowl O. D.	7.31 in
Bowl Lateral	0.56
Max. PSI	400
Disch size	5", 6"
<b>TURBINE OPERATIONS</b>	
Lubbock, Texas	
BOWL PERFORMANCE CURVE BASED ON PUMPING CLEAR, NON-AERATED WATER. RATED POINT ONLY IS GUARANTEED. CURVES REPRESENT SINGLE STAGE PERFORMANCE BASED ON TEST OF MULTI-STAGE BOWL ASSEMBLY. EFFICIENCY CORRECTION APPLIES TO HEAD, FLOW AND HORSEPOWER FOR LESSER STAGES.	

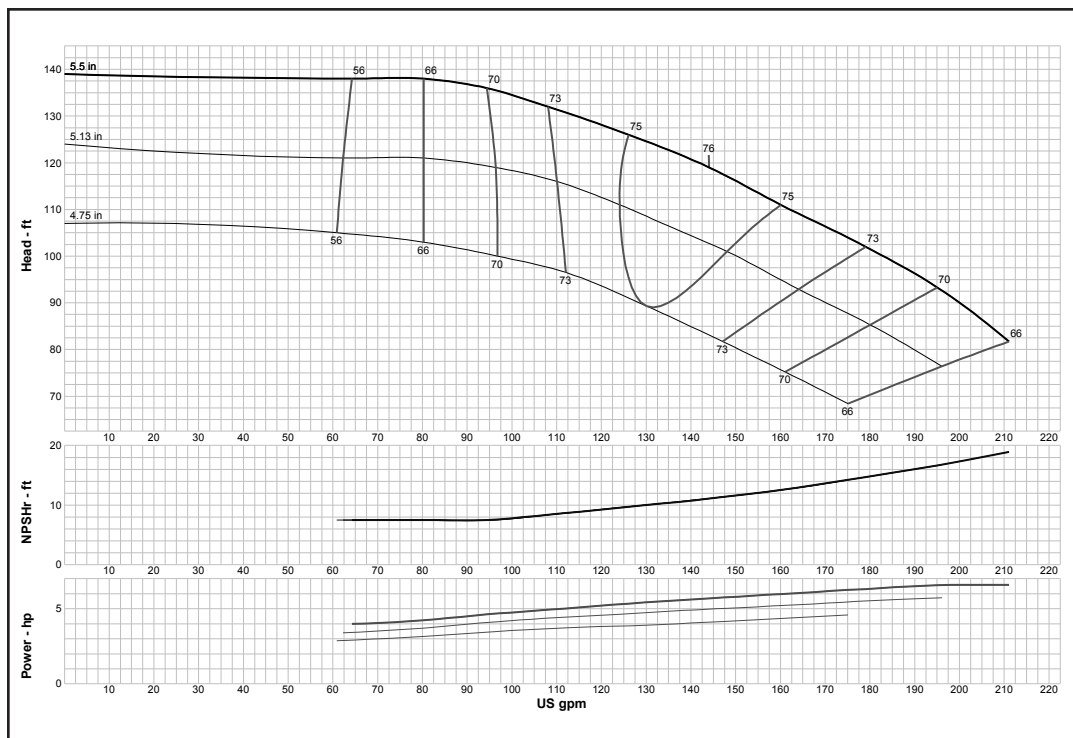
## Turbine

### MODEL 8FDLO (Effective July 1, 2014)



<b>Curve No. E6208FGPC0</b>	
<b>Model</b>	<b>8FDLO</b>
<b>RPM</b>	<b>3550</b>
EFFICIENCY CORRECTION	
1-STAGE	-3
2-STAGE	-1.5
3-STAGE	-1
4-STAGE	0
<b>Impeller</b>	<b>OPEN</b>
<b>Ns =</b>	<b>3750</b>
<b>K =</b>	<b>9.9</b>
Bowl O. D.	7.31 in
Bowl Lateral	0.56
Max. PSI	400
Disch size	5", 6"
<b>TURBINE OPERATIONS</b>	
Lubbock, Texas	
BOWL PERFORMANCE CURVE BASED ON PUMPING CLEAR, NON-AERATED WATER. RATED POINT ONLY IS GUARANTEED. CURVES REPRESENT SINGLE STAGE PERFORMANCE BASED ON TEST OF MULTI-STAGE BOWL ASSEMBLY. EFFICIENCY CORRECTION APPLIES TO HEAD, FLOW AND HORSEPOWER FOR LESSER STAGES.	

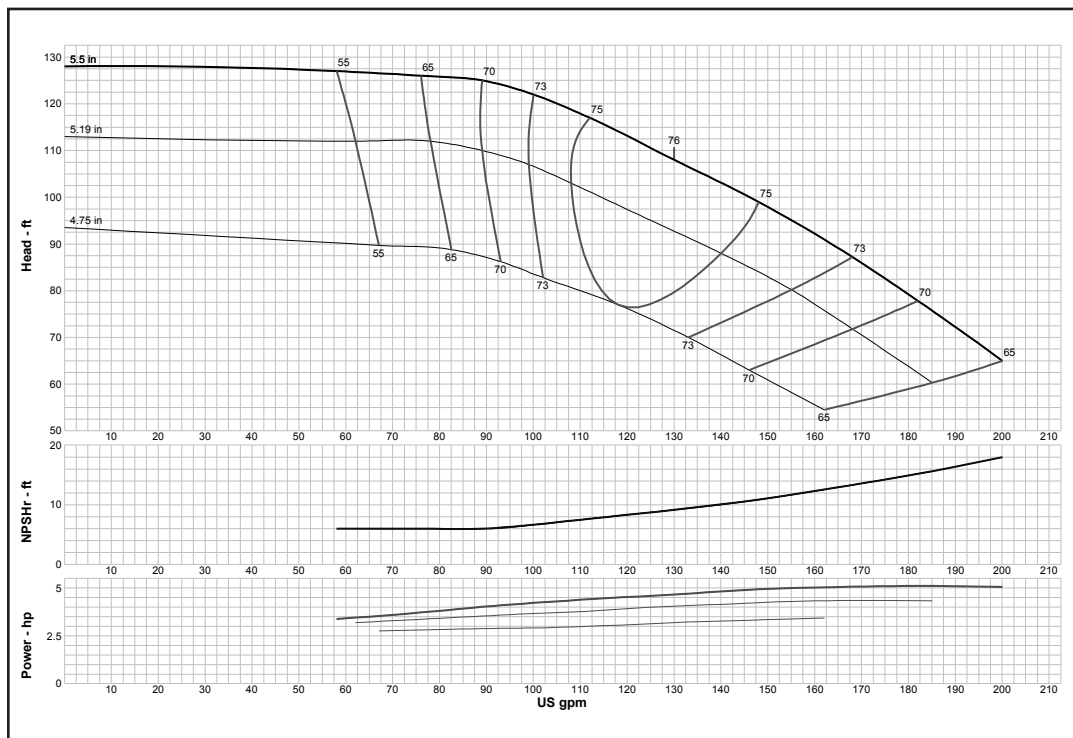
### MODEL 8RAHC (Effective July 1, 2014)



<b>Curve No. E6208AAPC7</b>	
<b>Model</b>	<b>8RAHC</b>
<b>RPM</b>	<b>3550</b>
EFFICIENCY CORRECTION	
1-STAGE	-4
2-STAGE	-2
3-STAGE	-1
4-STAGE	0
<b>Impeller</b>	<b>ENCLOSED</b>
<b>Ns =</b>	<b>1184</b>
<b>K =</b>	<b>2</b>
Bowl O. D.	7.50 in
Bowl Lateral	0.25
Max. PSI	430
Disch size	4", 5", 6"
<b>TURBINE OPERATIONS</b>	
Lubbock, Texas	
BOWL PERFORMANCE CURVE BASED ON PUMPING CLEAR, NON-AERATED WATER. RATED POINT ONLY IS GUARANTEED. CURVES REPRESENT SINGLE STAGE PERFORMANCE BASED ON TEST OF MULTI-STAGE BOWL ASSEMBLY. EFFICIENCY CORRECTION APPLIES TO HEAD, FLOW AND HORSEPOWER FOR LESSER STAGES.	

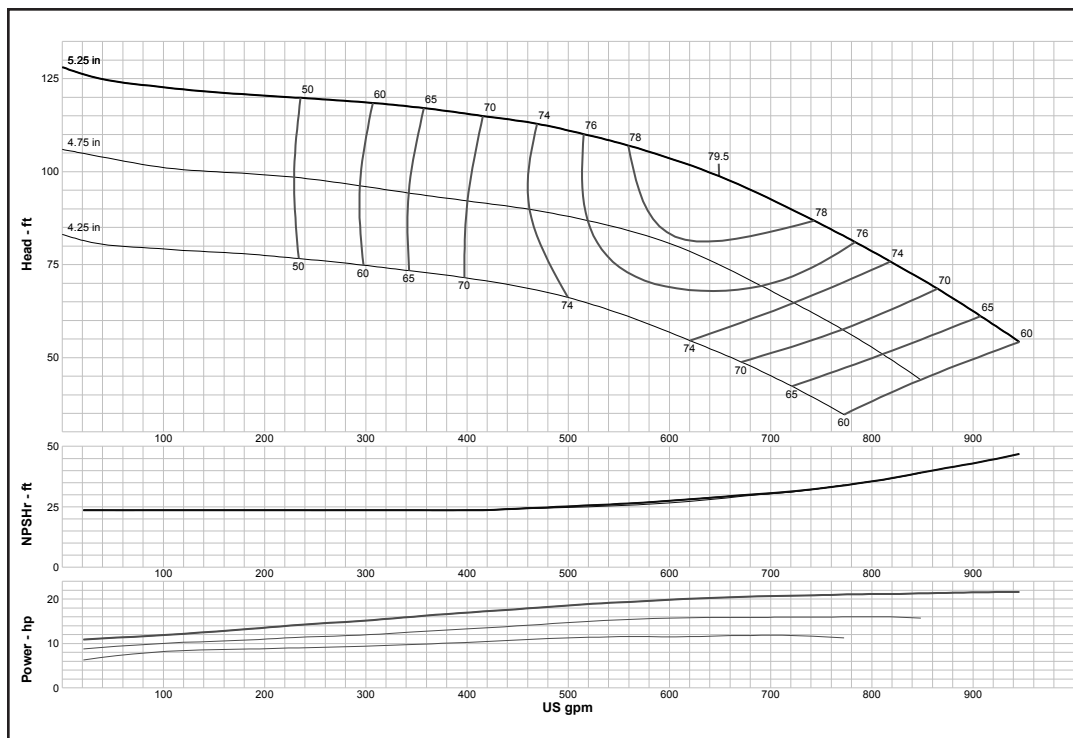
## Turbine

### MODEL 8RALC (Effective July 1, 2014)



<b>Curve No. E6208ACPC5</b>	
<b>Model</b>	<b>8RALC</b>
<b>RPM</b>	<b>3550</b>
EFFICIENCY CORRECTION	
1-STAGE	-4
2-STAGE	-2
3-STAGE	-1
4-STAGE	0
<b>Impeller</b>	<b>ENCLOSED</b>
Ns =	<b>1208</b>
K =	<b>2</b>
Bowl O. D.	7.50 in
Bowl Lateral	0.25
Max. PSI	430
Disch size	4", 5", 6"
<b>TURBINE OPERATIONS</b>	
Lubbock, Texas	
BOWL PERFORMANCE CURVE BASED ON PUMPING CLEAR, NON-AERATED WATER. RATED POINT ONLY IS GUARANTEED. CURVES REPRESENT SINGLE STAGE PERFORMANCE BASED ON TEST OF MULTI-STAGE BOWL ASSEMBLY. EFFICIENCY CORRECTION APPLIES TO HEAD, FLOW AND HORSEPOWER FOR LESSER STAGES.	

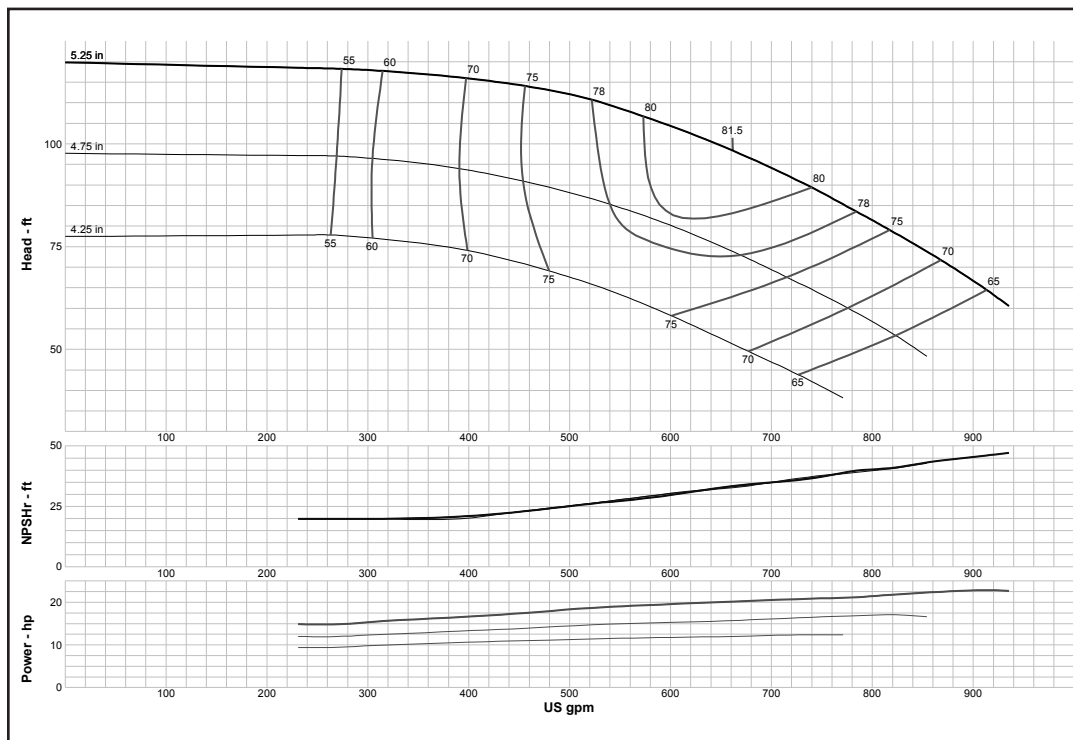
### MODEL 8RJHC (Effective July 1, 2014)



<b>Curve No. E6208RCPCO</b>	
<b>Model</b>	<b>8RJHC</b>
<b>RPM</b>	<b>3550</b>
EFFICIENCY CORRECTION	
1-STAGE	0
2-STAGE	0
3-STAGE	0
4-STAGE	0
<b>Impeller</b>	<b>ENCLOSED</b>
Ns =	<b>2849</b>
K =	<b>4</b>
Bowl O. D.	7.50 in
Bowl Lateral	0.63
Max. PSI	425
Disch size	4", 5", 6"
<b>TURBINE OPERATIONS</b>	
Lubbock, Texas	
BOWL PERFORMANCE CURVE BASED ON PUMPING CLEAR, NON-AERATED WATER. RATED POINT ONLY IS GUARANTEED. CURVES REPRESENT SINGLE STAGE PERFORMANCE BASED ON TEST OF MULTI-STAGE BOWL ASSEMBLY. EFFICIENCY CORRECTION APPLIES TO HEAD, FLOW AND HORSEPOWER FOR LESSER STAGES.	

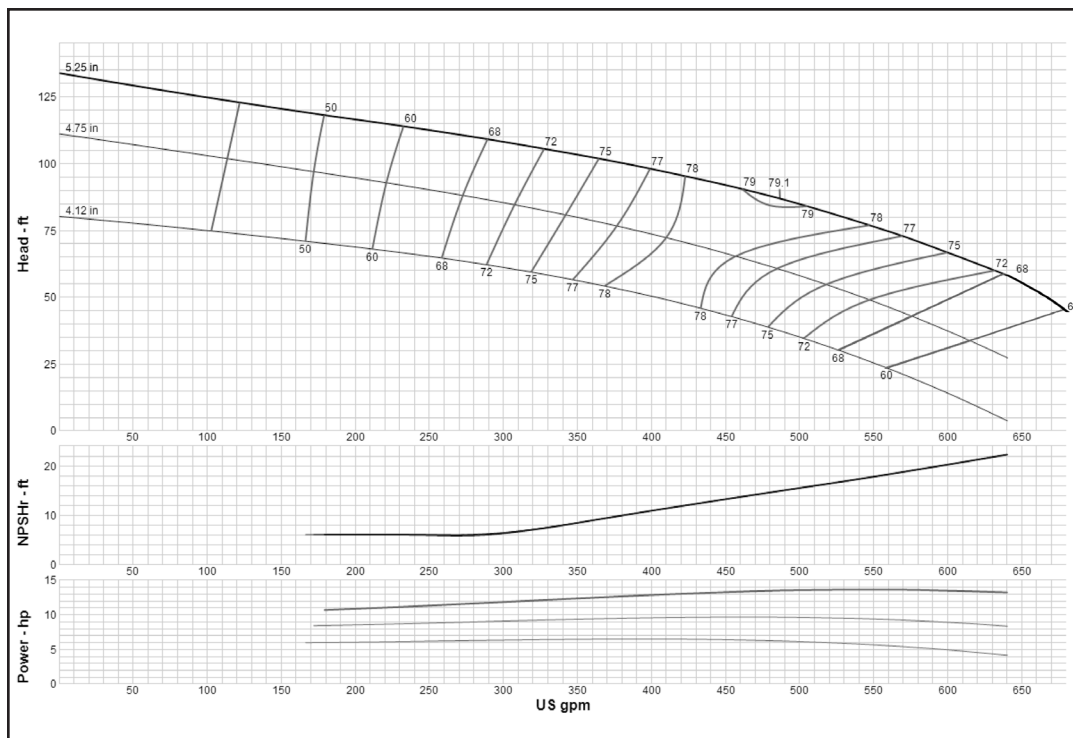
## Turbine

### MODEL 8RJHO (Effective July 1, 2014)



<b>Curve No. E6208RDPC1</b>	
<b>Model</b>	<b>8RJHO</b>
<b>RPM</b>	<b>3550</b>
EFFICIENCY CORRECTION	
1-STAGE	0
2-STAGE	0
3-STAGE	0
4-STAGE	0
<b>Impeller</b>	<b>OPEN</b>
<b>Ns =</b>	<b>2825</b>
<b>K =</b>	<b>5.3</b>
Bowl O. D.	7.50 in
Bowl Lateral	0.63
Max. PSI	425
Disch size	4", 5", 6"
<b>TURBINE OPERATIONS</b>	
Lubbock, Texas	
BOWL PERFORMANCE CURVE BASED ON PUMPING CLEAR, NON-AERATED WATER. RATED POINT ONLY IS GUARANTEED. CURVES REPRESENT SINGLE STAGE PERFORMANCE BASED ON TEST OF MULTI-STAGE BOWL ASSEMBLY. EFFICIENCY CORRECTION APPLIES TO HEAD, FLOW AND HORSEPOWER FOR LESSER STAGES.	

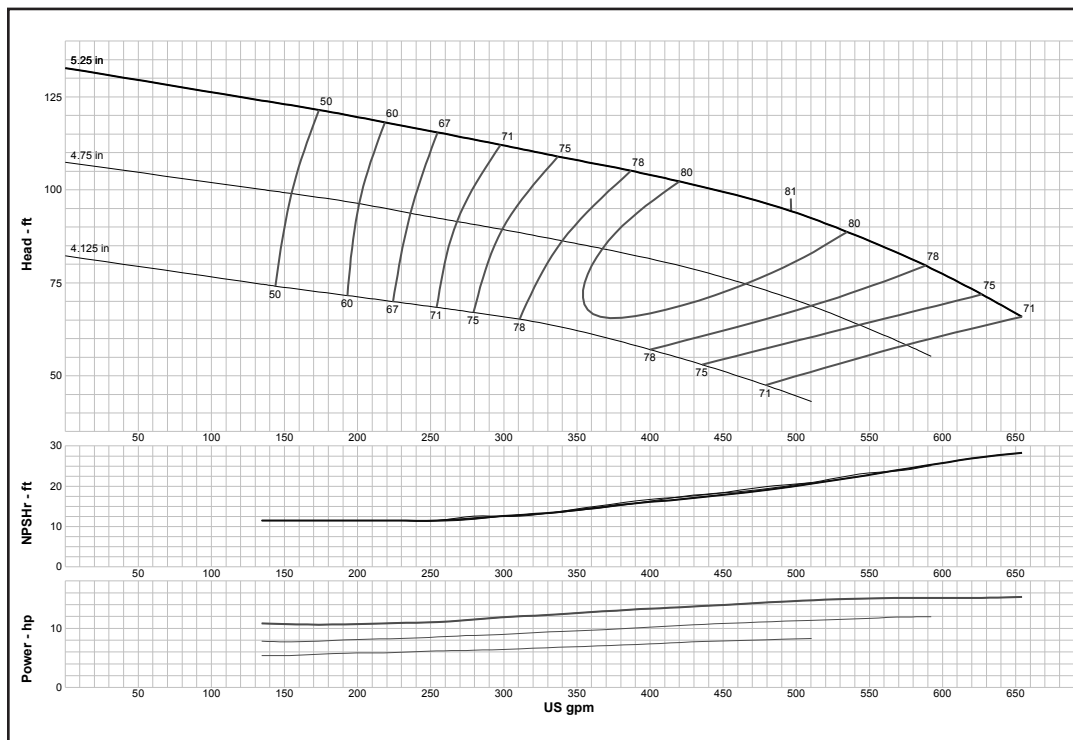
### MODEL 8RJLC (Effective September 1, 2017)



<b>Curve No. E6208REPC1</b>	
<b>Model</b>	<b>8RJLC</b>
<b>RPM</b>	<b>3550</b>
EFFICIENCY CORRECTION	
1-STAGE	0
2-STAGE	0
3-STAGE	0
4-STAGE	0
<b>Impeller</b>	<b>ENCLOSED</b>
<b>Ns =</b>	<b>2815</b>
<b>K =</b>	<b>4</b>
Bowl O. D.	7.50 in
Bowl Lateral	0.62
Max. PSI	425
Disch size	4", 5", 6"
<b>TURBINE OPERATIONS</b>	
Lubbock, Texas	
BOWL PERFORMANCE CURVE BASED ON PUMPING CLEAR, NON-AERATED WATER. RATED POINT ONLY IS GUARANTEED. CURVES REPRESENT SINGLE STAGE PERFORMANCE BASED ON TEST OF MULTI-STAGE BOWL ASSEMBLY. EFFICIENCY CORRECTION APPLIES TO HEAD, FLOW AND HORSEPOWER FOR LESSER STAGES.	

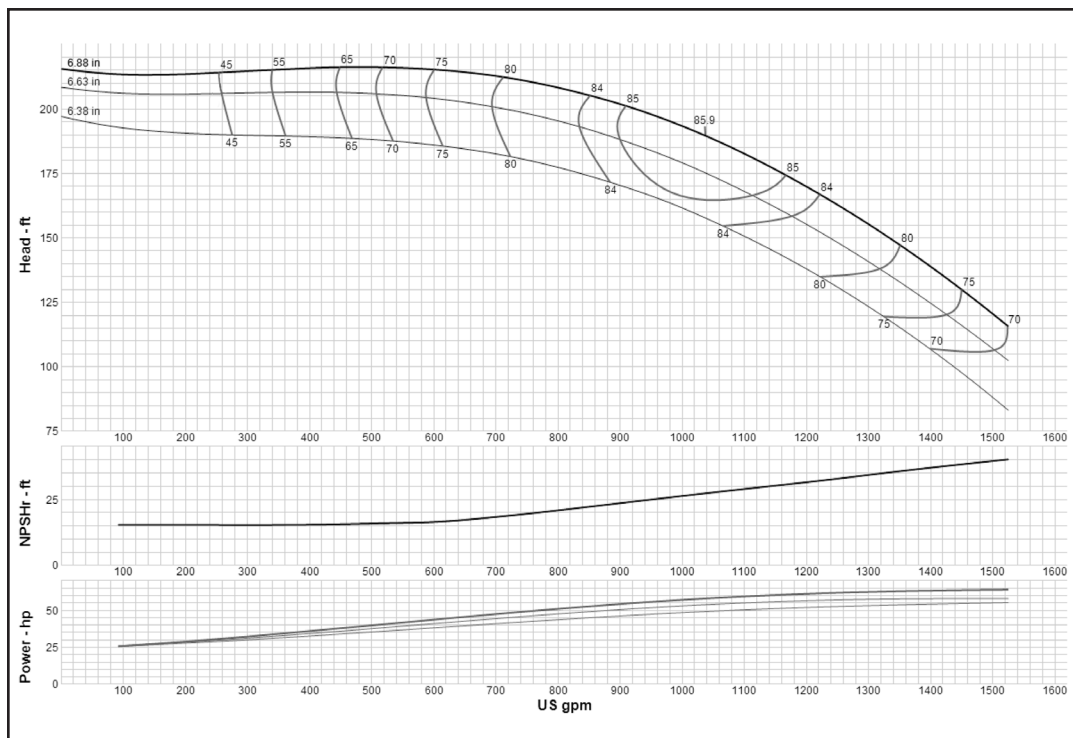
## Turbine

### MODEL 8RJLO (Effective July 1, 2014)



<b>Curve No. E6208RFPC1</b>	
<b>Model</b>	<b>8RJLO</b>
<b>RPM</b>	<b>3550</b>
EFFICIENCY CORRECTION	
1-STAGE	0
2-STAGE	0
3-STAGE	0
4-STAGE	0
<b>Impeller</b>	<b>OPEN</b>
<b>Ns =</b>	<b>2625</b>
<b>K =</b>	<b>5.3</b>
Bowl O. D.	7.50 in
Bowl Lateral	0.63
Max. PSI	425
Disch size	4", 5", 6"
<b>TURBINE OPERATIONS</b>	
Lubbock, Texas	
BOWL PERFORMANCE CURVE BASED ON PUMPING CLEAR, NON-AERATED WATER. RATED POINT ONLY IS GUARANTEED. CURVES REPRESENT SINGLE STAGE PERFORMANCE BASED ON TEST OF MULTI-STAGE BOWL ASSEMBLY. EFFICIENCY CORRECTION APPLIES TO HEAD, FLOW AND HORSEPOWER FOR LESSER STAGES.	

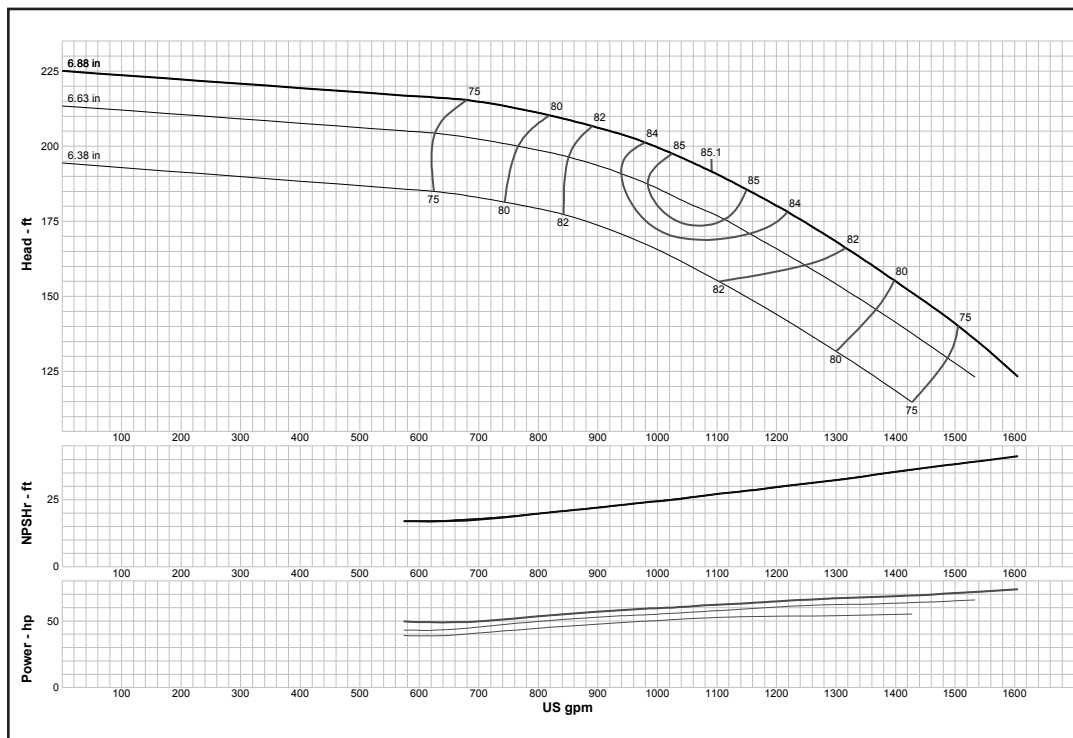
### MODEL 9RCHC (Effective September 1, 2017)



<b>Curve No. E6209CCPC2</b>	
<b>Model</b>	<b>9RCHC</b>
<b>RPM</b>	<b>3550</b>
EFFICIENCY CORRECTION	
1-STAGE	-2
2-STAGE	-1
3-STAGE	-0.5
4-STAGE	0
<b>Impeller</b>	<b>ENCLOSED</b>
<b>Ns =</b>	<b>2283</b>
<b>K =</b>	<b>4.9</b>
Bowl O. D.	9.25 in
Bowl Lateral	0.88
Max. PSI	400
Disch size	5", 6", 8"
<b>TURBINE OPERATIONS</b>	
Lubbock, Texas	
BOWL PERFORMANCE CURVE BASED ON PUMPING CLEAR, NON-AERATED WATER. RATED POINT ONLY IS GUARANTEED. CURVES REPRESENT SINGLE STAGE PERFORMANCE BASED ON TEST OF MULTI-STAGE BOWL ASSEMBLY. EFFICIENCY CORRECTION APPLIES TO HEAD, FLOW AND HORSEPOWER FOR LESSER STAGES.	

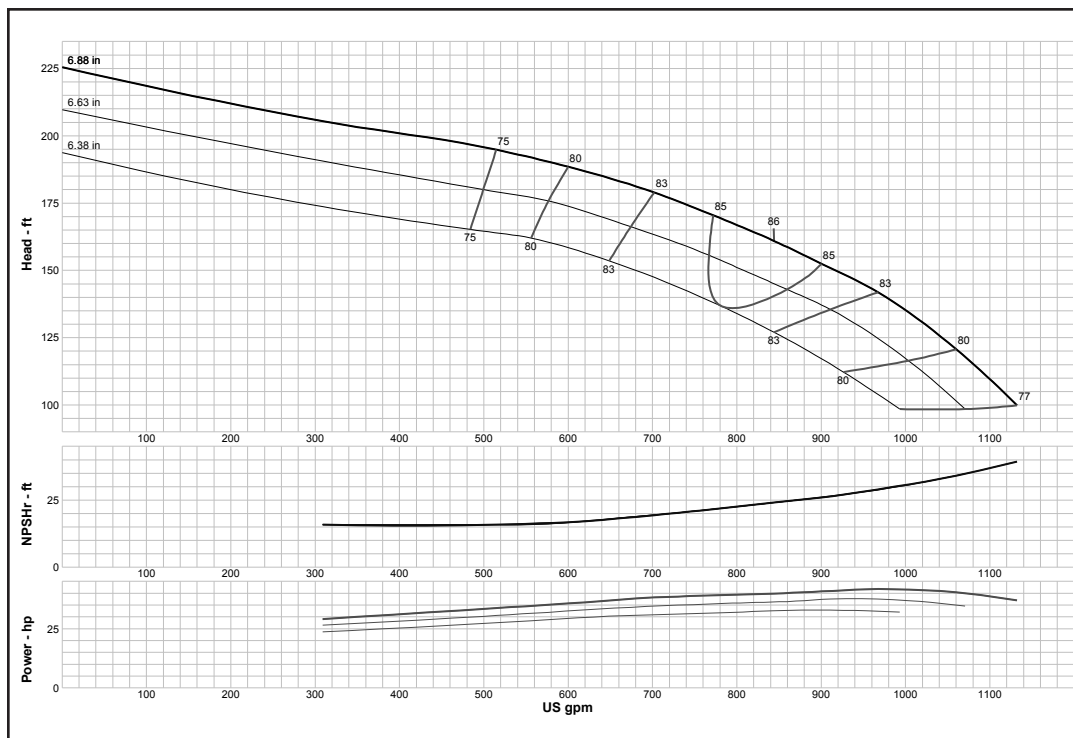
## Turbine

### MODEL 9RCHO (Effective July 1, 2014)



<b>Curve No. E6409CHPC1</b>	
<b>Model</b>	<b>9RCHO</b>
<b>RPM</b>	<b>3550</b>
EFFICIENCY CORRECTION	
1-STAGE	-2
2-STAGE	-1
3-STAGE	-0.5
4-STAGE	0
<b>Impeller</b>	<b>OPEN</b>
<b>Ns =</b>	<b>2300</b>
<b>K =</b>	<b>7</b>
Bowl O. D.	9.25 in
Bowl Lateral	0.88
Max. PSI	400
Disch size	5", 6", 8"
<b>TURBINE OPERATIONS</b>	
Lubbock, Texas	
BOWL PERFORMANCE CURVE BASED ON PUMPING CLEAR, NON-AERATED WATER. RATED POINT ONLY IS GUARANTEED. CURVES REPRESENT SINGLE STAGE PERFORMANCE BASED ON TEST OF MULTI-STAGE BOWL ASSEMBLY. EFFICIENCY CORRECTION APPLIES TO HEAD, FLOW AND HORSEPOWER FOR LESSER STAGES.	

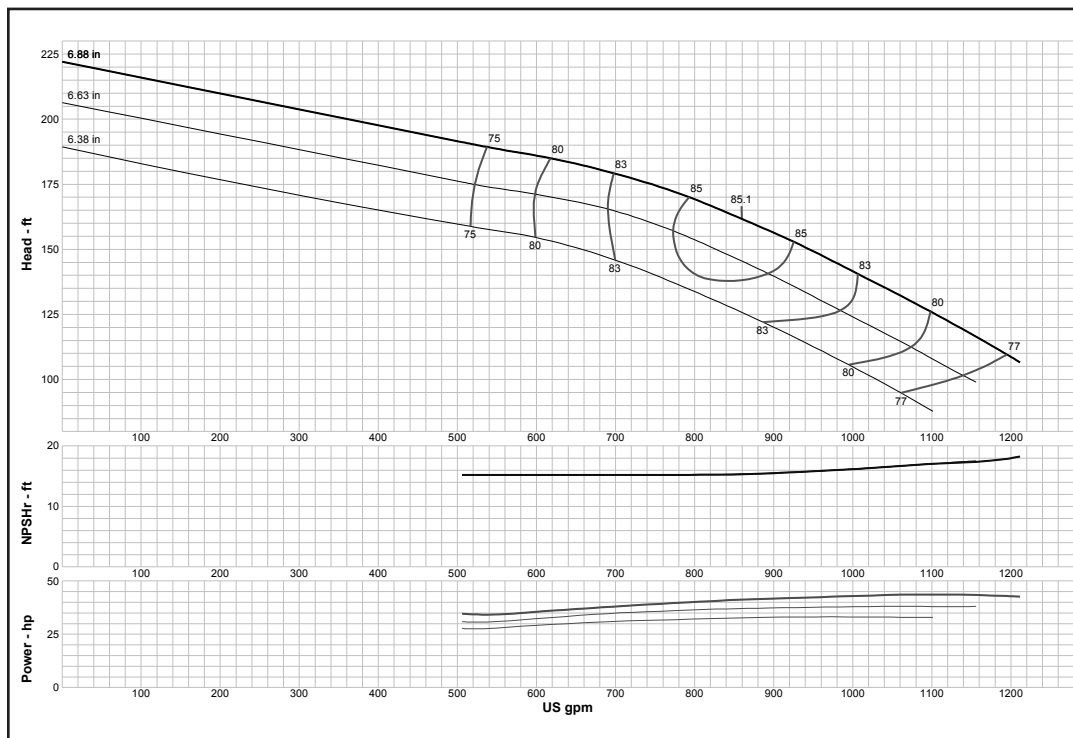
### MODEL 9RCLC (Effective July 1, 2014)



<b>Curve No. E6209CFPC2</b>	
<b>Model</b>	<b>9RCLC</b>
<b>RPM</b>	<b>3550</b>
EFFICIENCY CORRECTION	
1-STAGE	-2
2-STAGE	-1
3-STAGE	-0.5
4-STAGE	0
<b>Impeller</b>	<b>ENCLOSED</b>
<b>Ns =</b>	<b>2282</b>
<b>K =</b>	<b>4.9</b>
Bowl O. D.	9.25 in
Bowl Lateral	0.88
Max. PSI	400
Disch size	5", 6", 8"
<b>TURBINE OPERATIONS</b>	
Lubbock, Texas	
BOWL PERFORMANCE CURVE BASED ON PUMPING CLEAR, NON-AERATED WATER. RATED POINT ONLY IS GUARANTEED. CURVES REPRESENT SINGLE STAGE PERFORMANCE BASED ON TEST OF MULTI-STAGE BOWL ASSEMBLY. EFFICIENCY CORRECTION APPLIES TO HEAD, FLOW AND HORSEPOWER FOR LESSER STAGES.	

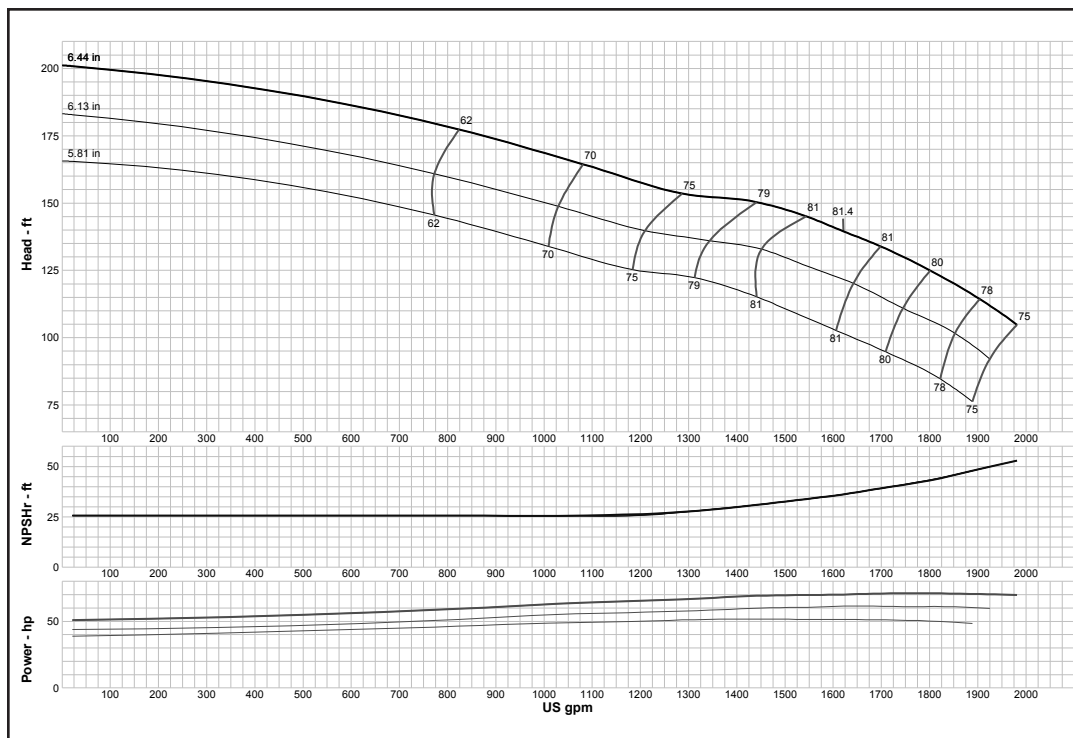
## Turbine

### MODEL 9RCLO (Effective July 1, 2014)



<b>Curve No. E6409CJPC1</b>	
<b>Model</b>	<b>9RCLO</b>
<b>RPM</b>	<b>3550</b>
EFFICIENCY CORRECTION	
1-STAGE	-2
2-STAGE	-1
3-STAGE	-0.5
4-STAGE	0
<b>Impeller</b>	<b>OPEN</b>
<b>Ns =</b>	<b>2290</b>
<b>K =</b>	<b>7</b>
Bowl O. D.	9.25 in
Bowl Lateral	0.88
Max. PSI	400
Disch size	5", 6", 8"
<b>TURBINE OPERATIONS</b>	
Lubbock, Texas	
BOWL PERFORMANCE CURVE BASED ON PUMPING CLEAR, NON-AERATED WATER. RATED POINT ONLY IS GUARANTEED. CURVES REPRESENT SINGLE STAGE PERFORMANCE BASED ON TEST OF MULTI-STAGE BOWL ASSEMBLY. EFFICIENCY CORRECTION APPLIES TO HEAD, FLOW AND HORSEPOWER FOR LESSER STAGES.	

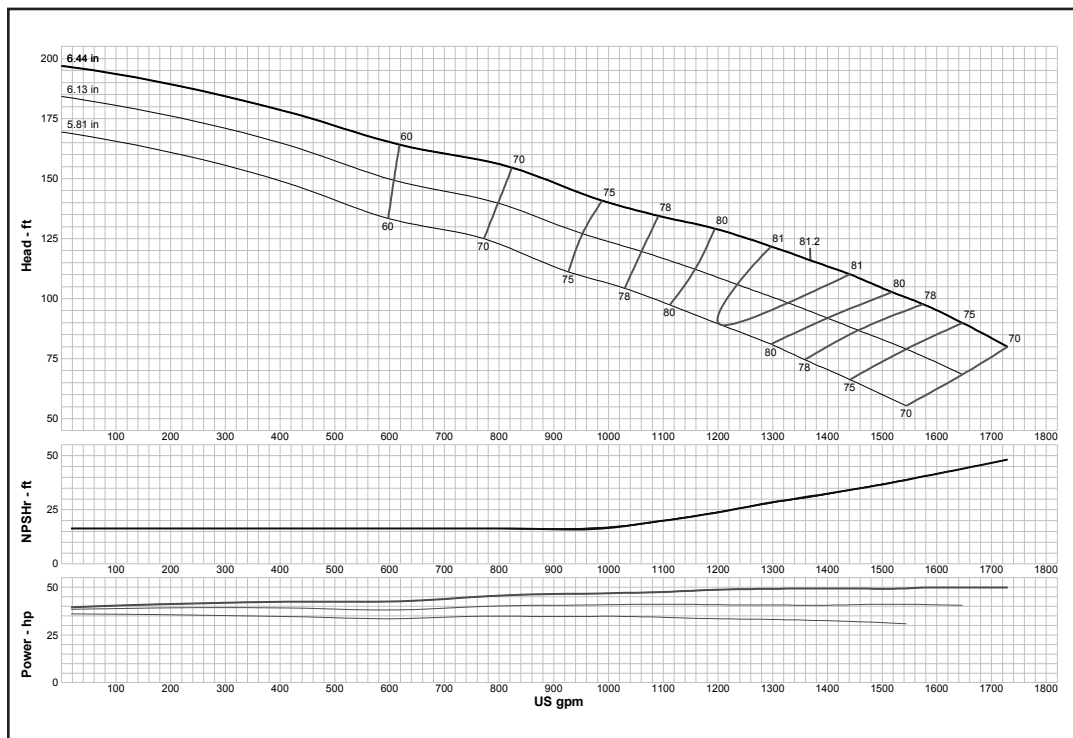
### MODEL 9THC (Effective July 1, 2014)



<b>Curve No. E6209TEPC2</b>	
<b>Model</b>	<b>9THC</b>
<b>RPM</b>	<b>3550</b>
EFFICIENCY CORRECTION	
1-STAGE	-2
2-STAGE	-1
3-STAGE	0
4-STAGE	0
<b>Impeller</b>	<b>ENCLOSED</b>
<b>Ns =</b>	<b>3520</b>
<b>K =</b>	<b>9</b>
Bowl O. D.	9.25 in
Bowl Lateral	0.75
Max. PSI	530
Disch size	5", 6", 8"
<b>TURBINE OPERATIONS</b>	
Lubbock, Texas	
BOWL PERFORMANCE CURVE BASED ON PUMPING CLEAR, NON-AERATED WATER. RATED POINT ONLY IS GUARANTEED. CURVES REPRESENT SINGLE STAGE PERFORMANCE BASED ON TEST OF MULTI-STAGE BOWL ASSEMBLY. EFFICIENCY CORRECTION APPLIES TO HEAD, FLOW AND HORSEPOWER FOR LESSER STAGES.	

## Turbine

### MODEL 9TLC (Effective July 1, 2014)



**Curve No. E6209TAPC2**

**Model 9TLC**

**RPM 3550**

EFFICIENCY CORRECTION

1-STAGE	-2
2-STAGE	-1
3-STAGE	0
4-STAGE	0

**Impeller ENCLOSED**

**Ns = 3725**

**K = 9**

Bowl O. D. 9.25 in

Bowl Lateral 0.75

Max. PSI 530

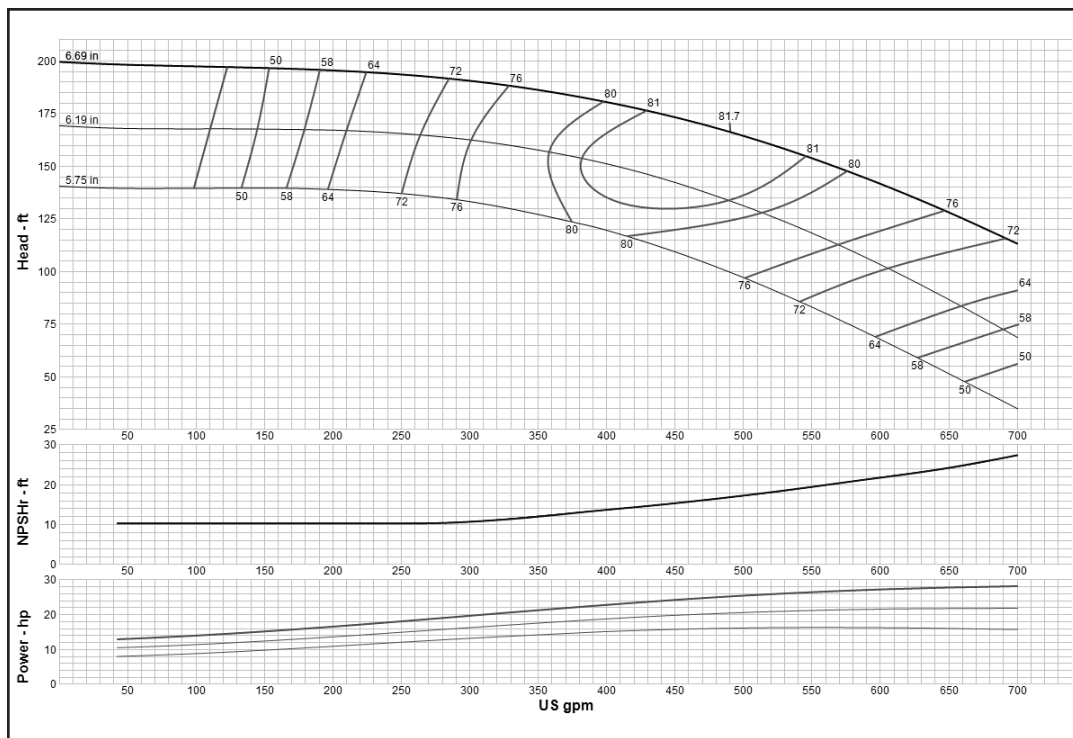
Disch size 5", 6", 8"

**TURBINE OPERATIONS**

Lubbock, Texas

BOWL PERFORMANCE CURVE BASED ON PUMPING CLEAR, NON-AERATED WATER. RATED POINT ONLY IS GUARANTEED. CURVES REPRESENT SINGLE STAGE PERFORMANCE BASED ON TEST OF MULTI-STAGE BOWL ASSEMBLY. EFFICIENCY CORRECTION APPLIES TO HEAD, FLOW AND HORSEPOWER FOR LESSER STAGES.

### MODEL 9WAHC (Effective September 1, 2017)



**Curve No. E6209WAPCO**

**Model 9WAHC**

**RPM 3550**

EFFICIENCY CORRECTION

1-STAGE	-2
2-STAGE	-1
3-STAGE	0
4-STAGE	0

**Impeller ENCLOSED**

**Ns = 1600**

**K = 3.75**

Bowl O. D. 9.25 in

Bowl Lateral 0.56

Max. PSI 530

Disch size 5", 6", 8"

**TURBINE OPERATIONS**

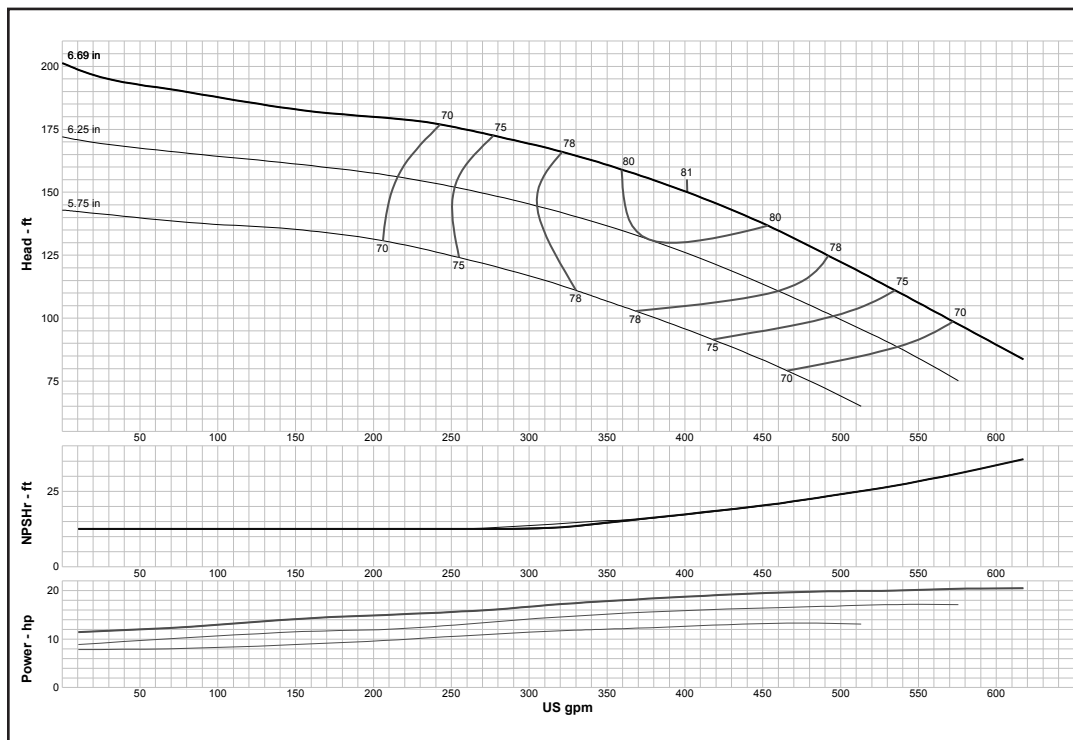
Lubbock, Texas

BOWL PERFORMANCE CURVE BASED ON PUMPING CLEAR, NON-AERATED WATER. RATED POINT ONLY IS GUARANTEED. CURVES REPRESENT SINGLE STAGE PERFORMANCE BASED ON TEST OF MULTI-STAGE BOWL ASSEMBLY. EFFICIENCY CORRECTION APPLIES TO HEAD, FLOW AND HORSEPOWER FOR LESSER STAGES.



## Turbine

### MODEL 9WALC (Effective July 1, 2014)



**Curve No. E6209WBPCO**

**Model 9WALC**

**RPM 3550**

EFFICIENCY CORRECTION

1-STAGE	-2
2-STAGE	-1
3-STAGE	0
4-STAGE	0

**Impeller ENCLOSED**

**Ns = 1660**

**K = 3.75**

Bowl O. D. 9.25 in

Bowl Lateral 0.56

Max. PSI 530

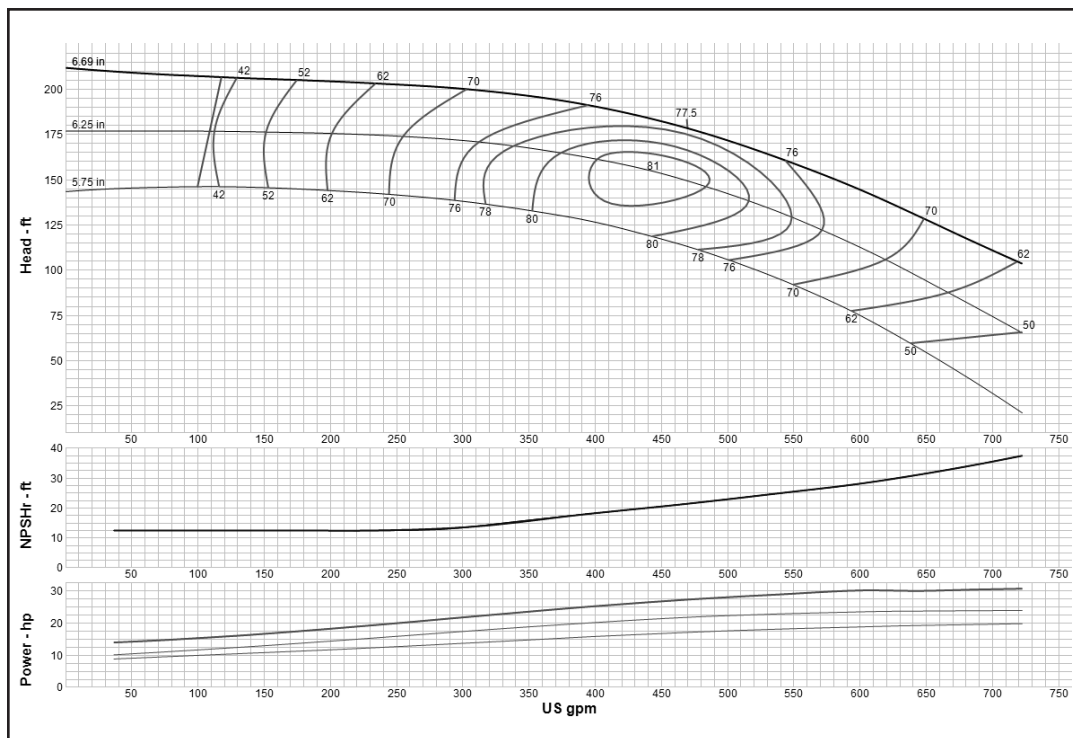
Disch size 5", 6", 8"

**TURBINE OPERATIONS**

Lubbock, Texas

BOWL PERFORMANCE CURVE BASED ON PUMPING CLEAR, NON-AERATED WATER. RATED POINT ONLY IS GUARANTEED. CURVES REPRESENT SINGLE STAGE PERFORMANCE BASED ON TEST OF MULTI-STAGE BOWL ASSEMBLY. EFFICIENCY CORRECTION APPLIES TO HEAD, FLOW AND HORSEPOWER FOR LESSER STAGES.

### MODEL 10RAHC (Effective September 1, 2017)



**Curve No. E6210RAPC1**

**Model 10RAHC**

**RPM 3550**

EFFICIENCY CORRECTION

1-STAGE	-4
2-STAGE	-2
3-STAGE	-1
4-STAGE	0

**Impeller ENCLOSED**

**Ns = 1550**

**K = 3.75**

Bowl O. D. 9.50 in

Bowl Lateral 0.38

Max. PSI 450

Disch size 4", 6", 8"

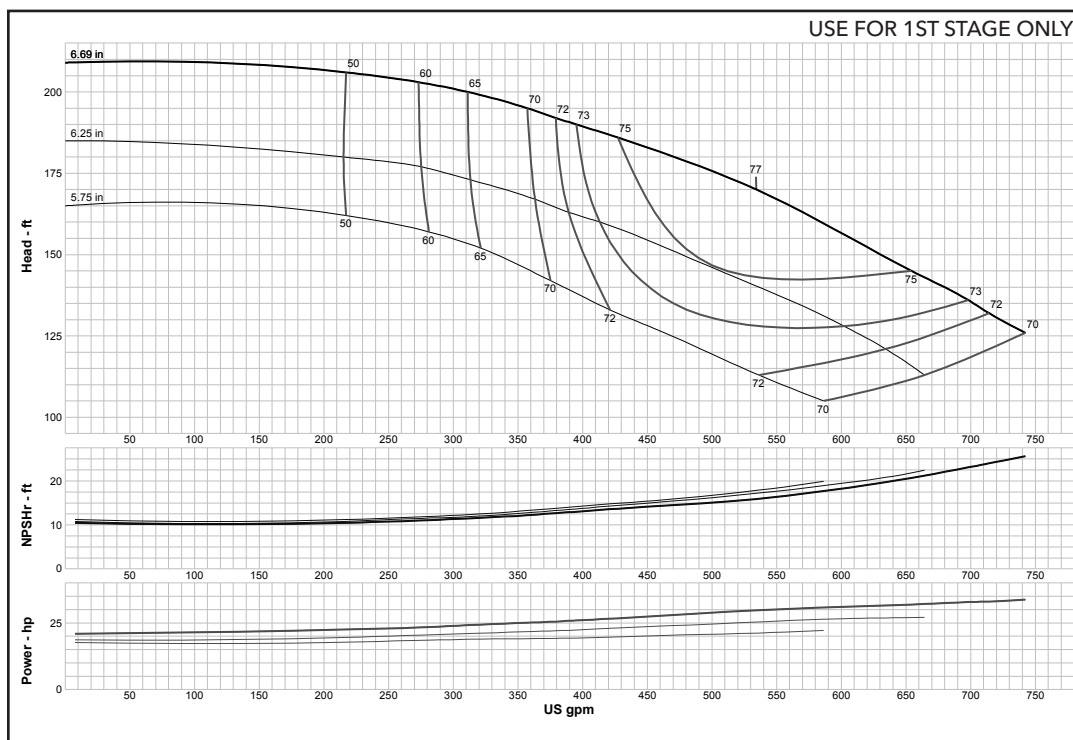
**TURBINE OPERATIONS**

Lubbock, Texas

BOWL PERFORMANCE CURVE BASED ON PUMPING CLEAR, NON-AERATED WATER. RATED POINT ONLY IS GUARANTEED. CURVES REPRESENT SINGLE STAGE PERFORMANCE BASED ON TEST OF MULTI-STAGE BOWL ASSEMBLY. EFFICIENCY CORRECTION APPLIES TO HEAD, FLOW AND HORSEPOWER FOR LESSER STAGES.

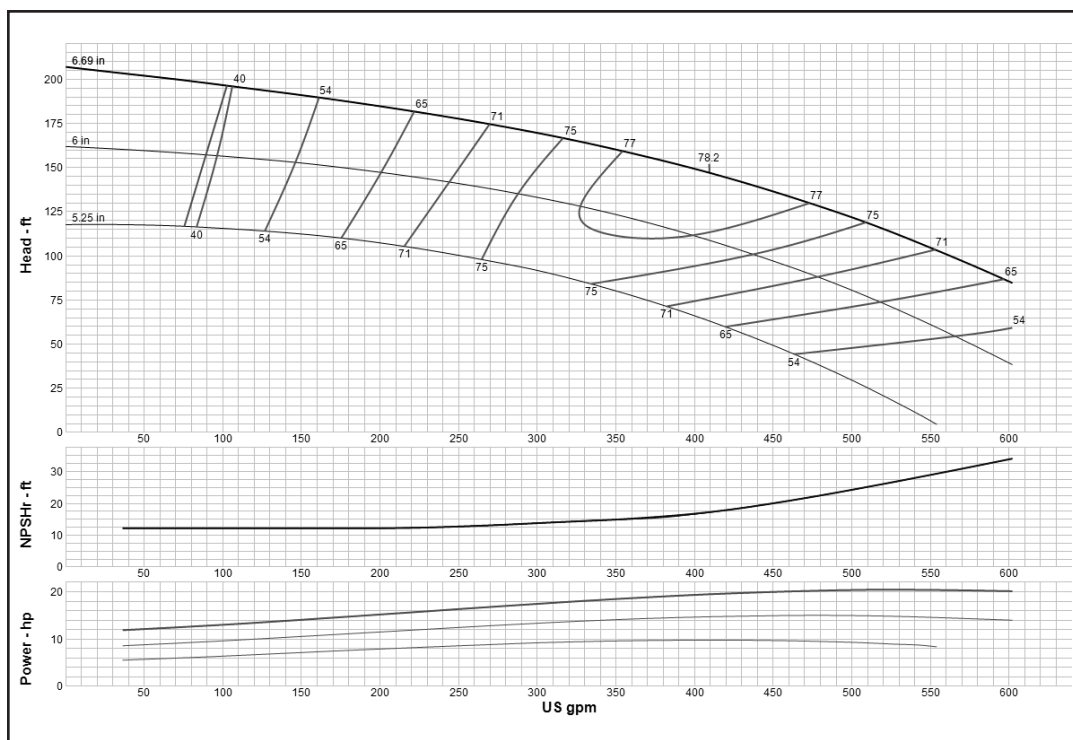
## Turbine

### MODEL 10RAHXC (Effective July 1, 2014)



<b>Curve No. E6210ABPC2</b>	
<b>Model</b>	<b>10RAHXC</b>
<b>RPM</b>	<b>3550</b>
EFFICIENCY CORRECTION	
1-STAGE	0
2-STAGE	0
3-STAGE	0
4-STAGE	0
<b>Impeller</b>	<b>ENCLOSED</b>
<b>Ns =</b>	<b>1747</b>
<b>K =</b>	<b>5.5</b>
Bowl O. D.	9.50 in
Bowl Lateral	0.37
Max. PSI	450
Disch size	4", 6", 8"
<b>TURBINE OPERATIONS</b>	
Lubbock, Texas	
BOWL PERFORMANCE CURVE BASED ON PUMPING CLEAR, NON-AERATED WATER. RATED POINT ONLY IS GUARANTEED. CURVES REPRESENT SINGLE STAGE PERFORMANCE BASED ON TEST OF MULTI-STAGE BOWL ASSEMBLY. EFFICIENCY CORRECTION APPLIES TO HEAD, FLOW AND HORSEPOWER FOR LESSER STAGES.	

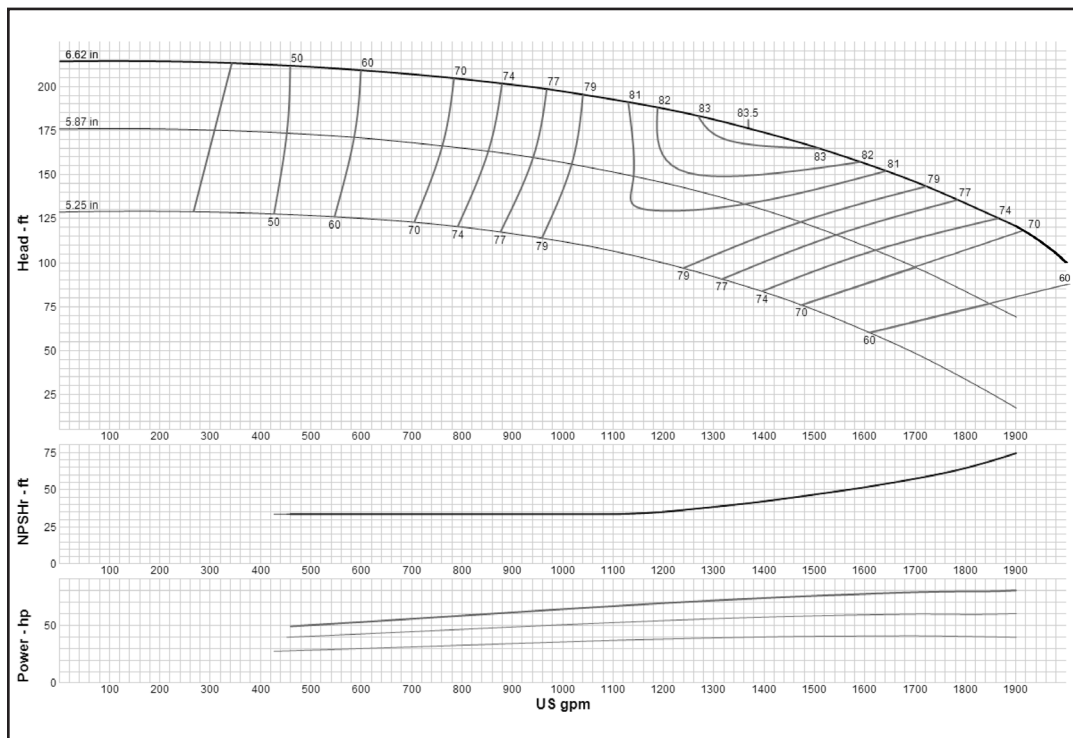
### MODEL 10RALC (Effective September 1, 2017)



<b>Curve No. E6210RBPC1</b>	
<b>Model</b>	<b>10RALC</b>
<b>RPM</b>	<b>3550</b>
EFFICIENCY CORRECTION	
1-STAGE	-4
2-STAGE	-2
3-STAGE	-1
4-STAGE	0
<b>Impeller</b>	<b>ENCLOSED</b>
<b>Ns =</b>	<b>1625</b>
<b>K =</b>	<b>3.75</b>
Bowl O. D.	9.50 in
Bowl Lateral	0.38
Max. PSI	450
Disch size	4", 6", 8"
<b>TURBINE OPERATIONS</b>	
Lubbock, Texas	
BOWL PERFORMANCE CURVE BASED ON PUMPING CLEAR, NON-AERATED WATER. RATED POINT ONLY IS GUARANTEED. CURVES REPRESENT SINGLE STAGE PERFORMANCE BASED ON TEST OF MULTI-STAGE BOWL ASSEMBLY. EFFICIENCY CORRECTION APPLIES TO HEAD, FLOW AND HORSEPOWER FOR LESSER STAGES.	

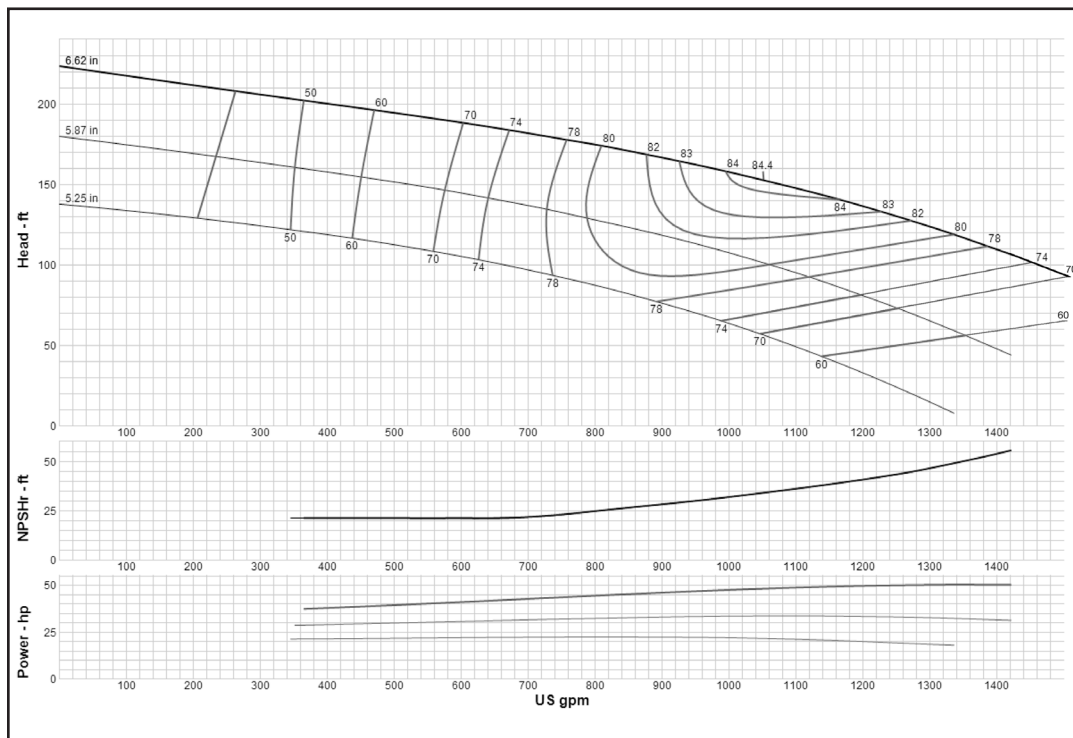
## Turbine

### MODEL 10RJHC (Effective September 1, 2017)



<b>Curve No. E6410RCPC1</b>	
<b>Model</b>	<b>10RJHC</b>
<b>RPM</b>	<b>3550</b>
EFFICIENCY CORRECTION	
1-STAGE	0
2-STAGE	0
3-STAGE	0
4-STAGE	0
<b>Impeller</b>	<b>ENCLOSED</b>
Ns =	<b>2760</b>
K =	<b>7</b>
Bowl O. D.	9.50 in
Bowl Lateral	0.75
Max. PSI	430
Disch size	6", 8"
<b>TURBINE OPERATIONS</b>	
Lubbock, Texas	
BOWL PERFORMANCE CURVE BASED ON PUMPING CLEAR, NON-AERATED WATER. RATED POINT ONLY IS GUARANTEED. CURVES REPRESENT SINGLE STAGE PERFORMANCE BASED ON TEST OF MULTI-STAGE BOWL ASSEMBLY. EFFICIENCY CORRECTION APPLIES TO HEAD, FLOW AND HORSEPOWER FOR LESSER STAGES.	

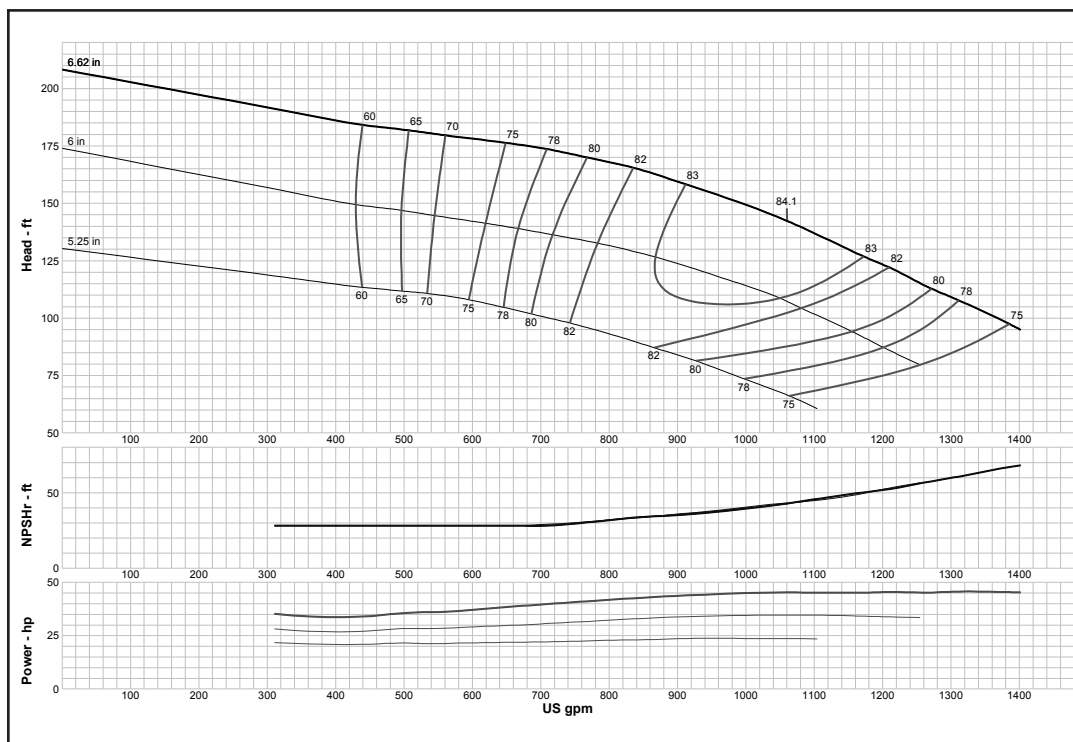
### MODEL 10RJLC (Effective September 1, 2017)



<b>Curve No. E6210REPC1</b>	
<b>Model</b>	<b>10RJLC</b>
<b>RPM</b>	<b>3550</b>
EFFICIENCY CORRECTION	
1-STAGE	0
2-STAGE	0
3-STAGE	0
4-STAGE	0
<b>Impeller</b>	<b>ENCLOSED</b>
Ns =	<b>2760</b>
K =	<b>7</b>
Bowl O. D.	9.50 in
Bowl Lateral	0.75
Max. PSI	430
Disch size	6", 8"
<b>TURBINE OPERATIONS</b>	
Lubbock, Texas	
BOWL PERFORMANCE CURVE BASED ON PUMPING CLEAR, NON-AERATED WATER. RATED POINT ONLY IS GUARANTEED. CURVES REPRESENT SINGLE STAGE PERFORMANCE BASED ON TEST OF MULTI-STAGE BOWL ASSEMBLY. EFFICIENCY CORRECTION APPLIES TO HEAD, FLOW AND HORSEPOWER FOR LESSER STAGES.	

## Turbine

### MODEL 10RJLO (Effective July 1, 2014)



**Curve No. E6210RFPC1**

**Model 10RJLO**

**RPM 3550**

EFFICIENCY CORRECTION

1-STAGE	0
2-STAGE	0
3-STAGE	0
4-STAGE	0

Impeller **OPEN**

Ns = **2760**

K = **9.5**

Bowl O. D. 9.50 in

Bowl Lateral 0.75

Max. PSI 430

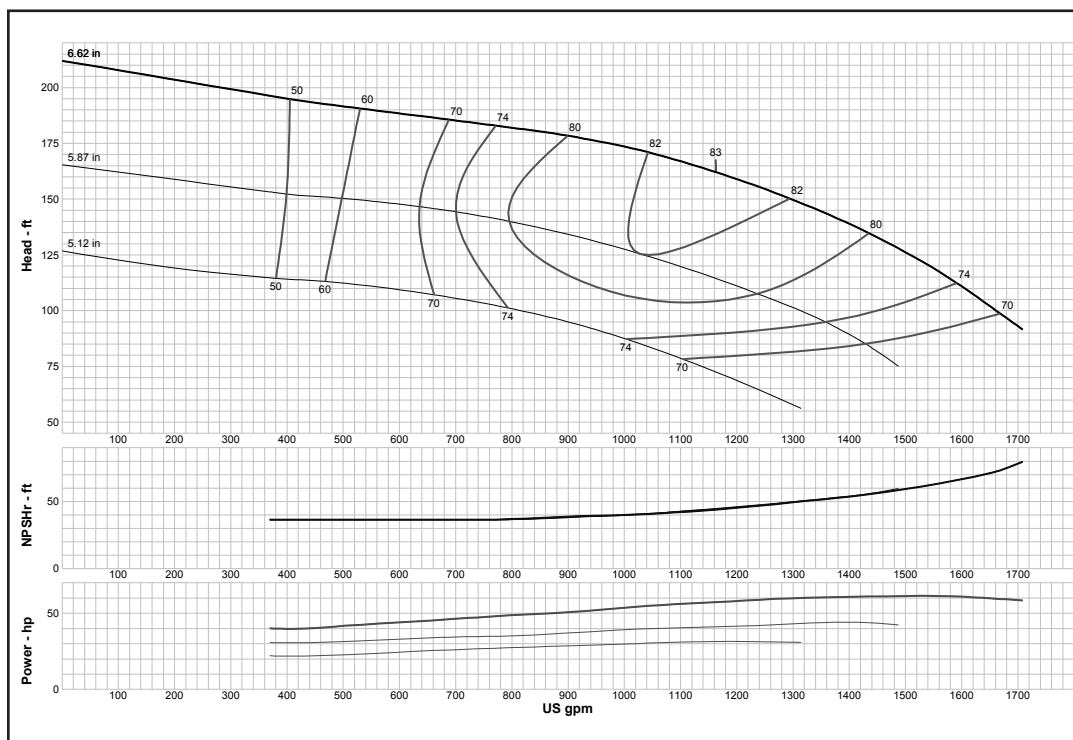
Disch size 6", 8"

**TURBINE OPERATIONS**

Lubbock, Texas

BOWL PERFORMANCE CURVE BASED ON PUMPING CLEAR, NON-AERATED WATER. RATED POINT ONLY IS GUARANTEED. CURVES REPRESENT SINGLE STAGE PERFORMANCE BASED ON TEST OF MULTI-STAGE BOWL ASSEMBLY. EFFICIENCY CORRECTION APPLIES TO HEAD, FLOW AND HORSEPOWER FOR LESSER STAGES.

### MODEL 10RJMC (Effective July 1, 2014)



**Curve No. E6210RGPC1**

**Model 10RJMC**

**RPM 3550**

EFFICIENCY CORRECTION

1-STAGE	0
2-STAGE	0
3-STAGE	0
4-STAGE	0

Impeller **ENCLOSED**

Ns = **2610**

K = **7**

Bowl O. D. 9.50 in

Bowl Lateral 0.75

Max. PSI 430

Disch size 6", 8"

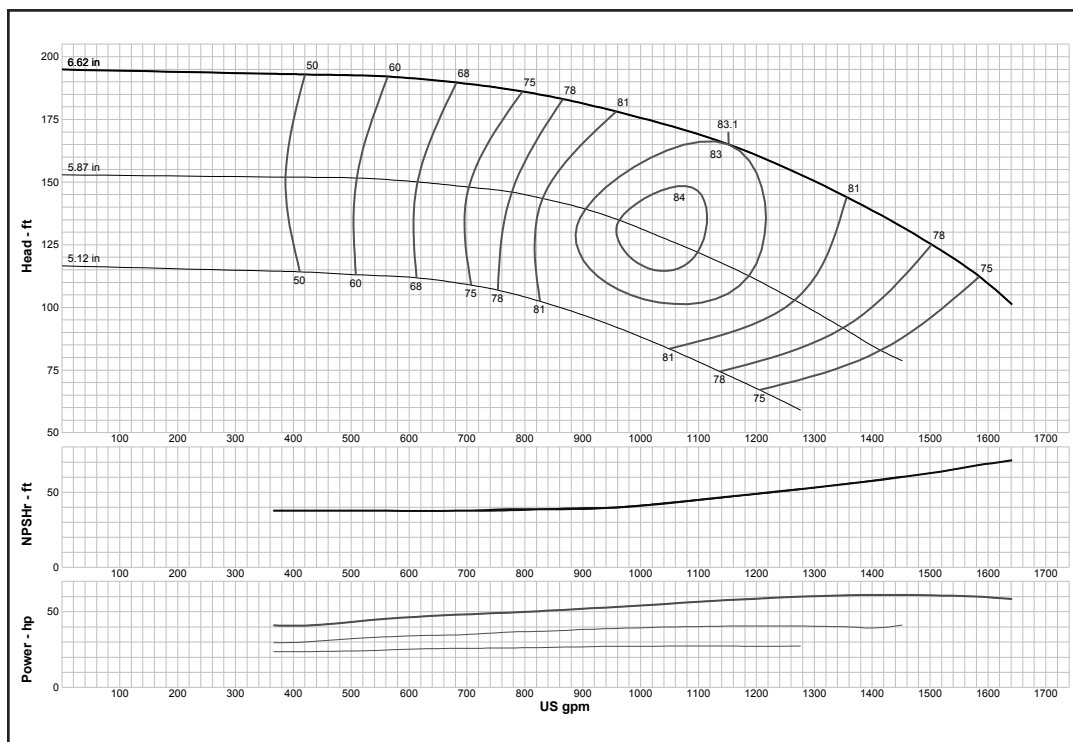
**TURBINE OPERATIONS**

Lubbock, Texas

BOWL PERFORMANCE CURVE BASED ON PUMPING CLEAR, NON-AERATED WATER. RATED POINT ONLY IS GUARANTEED. CURVES REPRESENT SINGLE STAGE PERFORMANCE BASED ON TEST OF MULTI-STAGE BOWL ASSEMBLY. EFFICIENCY CORRECTION APPLIES TO HEAD, FLOW AND HORSEPOWER FOR LESSER STAGES.

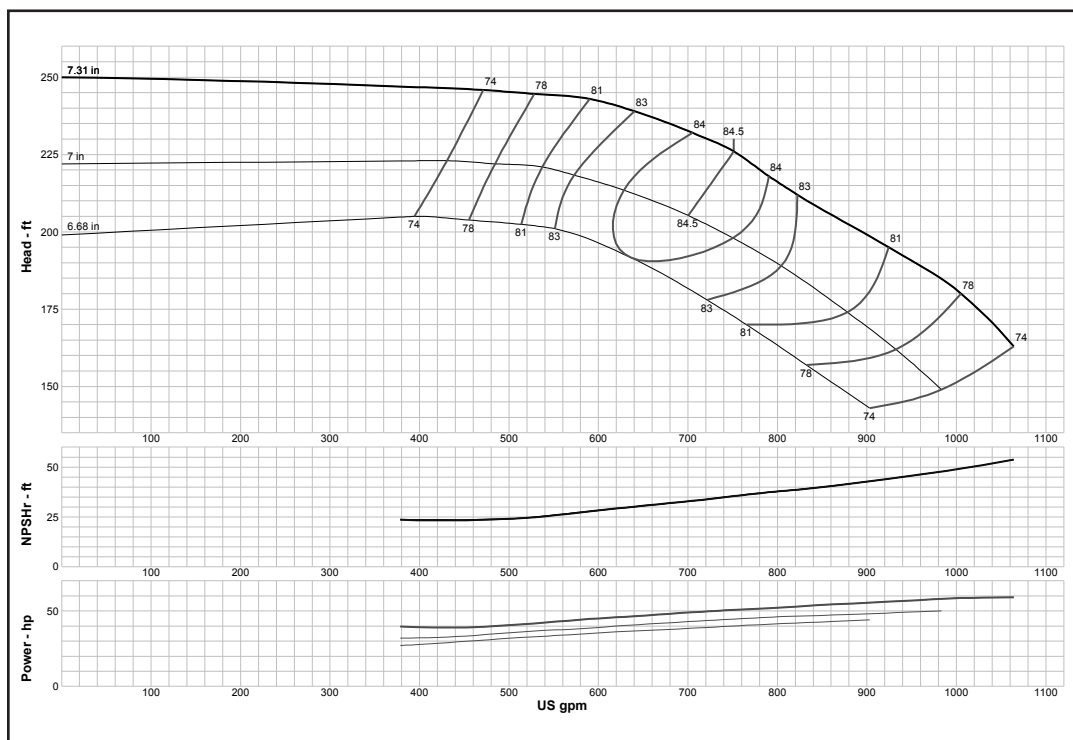
## Turbine

### MODEL 10RJMO (Effective July 1, 2014)



<b>Curve No. E6210RHPC1</b>	
<b>Model</b>	<b>10RJMO</b>
<b>RPM</b>	<b>3550</b>
EFFICIENCY CORRECTION	
1-STAGE	0
2-STAGE	0
3-STAGE	0
4-STAGE	0
<b>Impeller</b>	<b>OPEN</b>
<b>Ns =</b>	<b>2565</b>
<b>K =</b>	<b>9.5</b>
Bowl O. D.	9.50 in
Bowl Lateral	0.75
Max. PSI	430
Disch size	6", 8"
<b>TURBINE OPERATIONS</b>	
Lubbock, Texas	
BOWL PERFORMANCE CURVE BASED ON PUMPING CLEAR, NON-AERATED WATER. RATED POINT ONLY IS GUARANTEED. CURVES REPRESENT SINGLE STAGE PERFORMANCE BASED ON TEST OF MULTI-STAGE BOWL ASSEMBLY. EFFICIENCY CORRECTION APPLIES TO HEAD, FLOW AND HORSEPOWER FOR LESSER STAGES.	

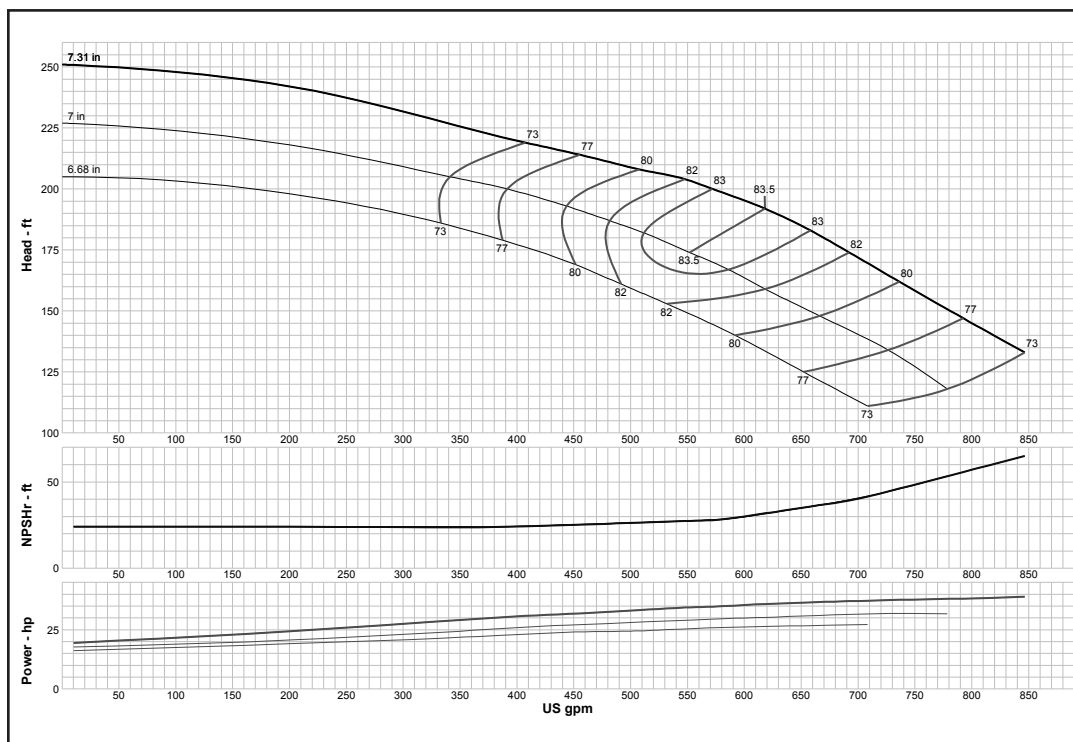
### MODEL 10WAHC (Effective July 1, 2014)



<b>Curve No. E6210WAPC1</b>	
<b>Model</b>	<b>10WAHC</b>
<b>RPM</b>	<b>3550</b>
EFFICIENCY CORRECTION	
1-STAGE	-3
2-STAGE	-2
3-STAGE	-1
4-STAGE	0
<b>Impeller</b>	<b>ENCLOSED</b>
<b>Ns =</b>	<b>1695</b>
<b>K =</b>	<b>4.65</b>
Bowl O. D.	9.50 in
Bowl Lateral	0.63
Max. PSI	375
Disch size	4", 6", 8"
<b>TURBINE OPERATIONS</b>	
Lubbock, Texas	
BOWL PERFORMANCE CURVE BASED ON PUMPING CLEAR, NON-AERATED WATER. RATED POINT ONLY IS GUARANTEED. CURVES REPRESENT SINGLE STAGE PERFORMANCE BASED ON TEST OF MULTI-STAGE BOWL ASSEMBLY. EFFICIENCY CORRECTION APPLIES TO HEAD, FLOW AND HORSEPOWER FOR LESSER STAGES.	

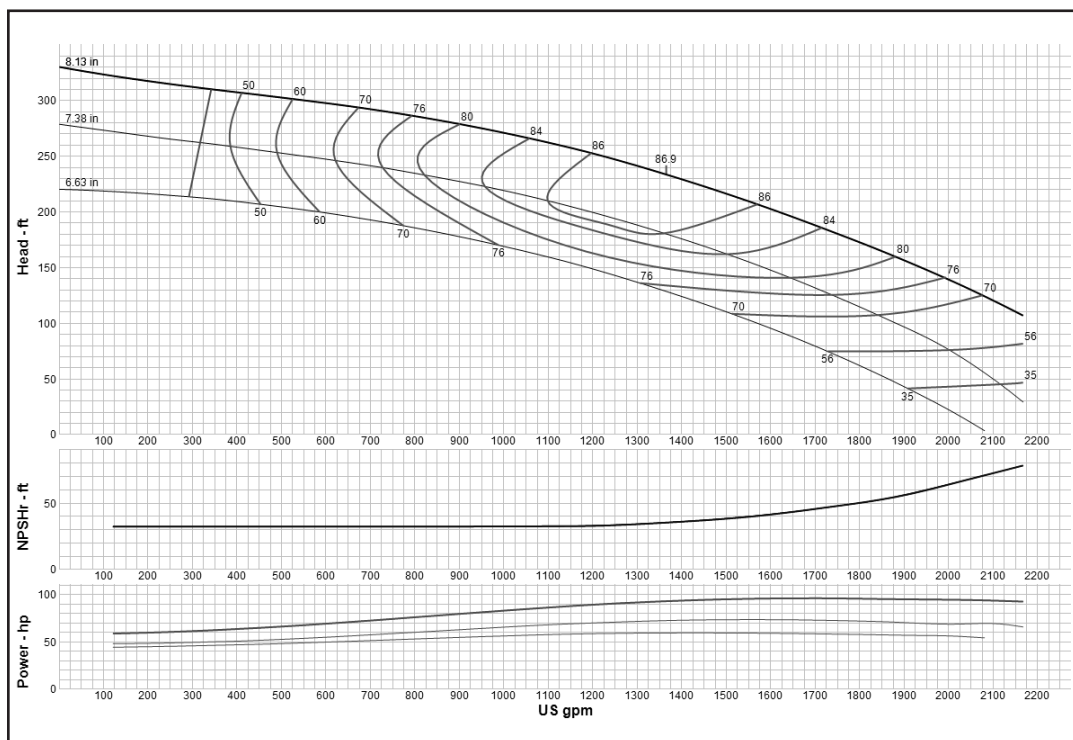
## Turbine

### MODEL 10WALC (Effective July 1, 2014)



<b>Curve No. E6210WBPC2</b>	
<b>Model</b>	<b>10WALC</b>
<b>RPM</b>	<b>3550</b>
EFFICIENCY CORRECTION	
1-STAGE	-3
2-STAGE	-2
3-STAGE	-1
4-STAGE	0
<b>Impeller</b>	<b>ENCLOSED</b>
<b>Ns =</b>	<b>1700</b>
<b>K =</b>	<b>4.6</b>
Bowl O. D.	9.50 in
Bowl Lateral	0.63
Max. PSI	375
Disch size	4", 6", 8"
<b>TURBINE OPERATIONS</b>	
Lubbock, Texas	
BOWL PERFORMANCE CURVE BASED ON PUMPING CLEAR, NON-AERATED WATER. RATED POINT ONLY IS GUARANTEED. CURVES REPRESENT SINGLE STAGE PERFORMANCE BASED ON TEST OF MULTI-STAGE BOWL ASSEMBLY. EFFICIENCY CORRECTION APPLIES TO HEAD, FLOW AND HORSEPOWER FOR LESSER STAGES.	

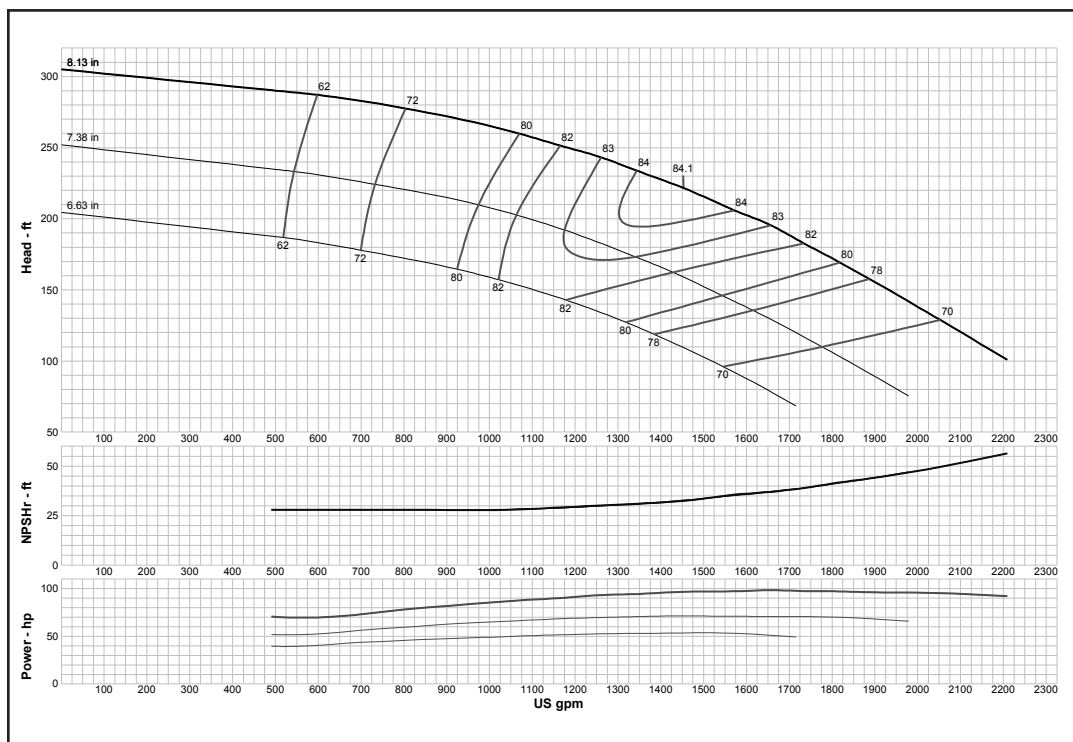
### MODEL 11CLC (Effective September 1, 2017)



<b>Curve No. E6211CFPC1</b>	
<b>Model</b>	<b>11CLC</b>
<b>RPM</b>	<b>3550</b>
EFFICIENCY CORRECTION	
1-STAGE	-1.5
2-STAGE	-1
3-STAGE	-0.5
4-STAGE	0
<b>Impeller</b>	<b>ENCLOSED</b>
<b>Ns =</b>	<b>2230</b>
<b>K =</b>	<b>7</b>
Bowl O. D.	11.00 in
Bowl Lateral	0.75
Max. PSI	380
Disch size	6", 8", 10"
<b>TURBINE OPERATIONS</b>	
Lubbock, Texas	
BOWL PERFORMANCE CURVE BASED ON PUMPING CLEAR, NON-AERATED WATER. RATED POINT ONLY IS GUARANTEED. CURVES REPRESENT SINGLE STAGE PERFORMANCE BASED ON TEST OF MULTI-STAGE BOWL ASSEMBLY. EFFICIENCY CORRECTION APPLIES TO HEAD, FLOW AND HORSEPOWER FOR LESSER STAGES.	

## Turbine

### MODEL 11CLO (Effective July 1, 2014)



**Curve No. E6411CJPCO**

**Model 11CLO**

**RPM 3550**

EFFICIENCY CORRECTION

1-STAGE	-1.5
2-STAGE	-1
3-STAGE	-0.5
4-STAGE	0

**Impeller OPEN**

**Ns = 2230**

**K = 9.1**

Bowl O. D. 11.00 in

Bowl Lateral 0.88

Max. PSI 380

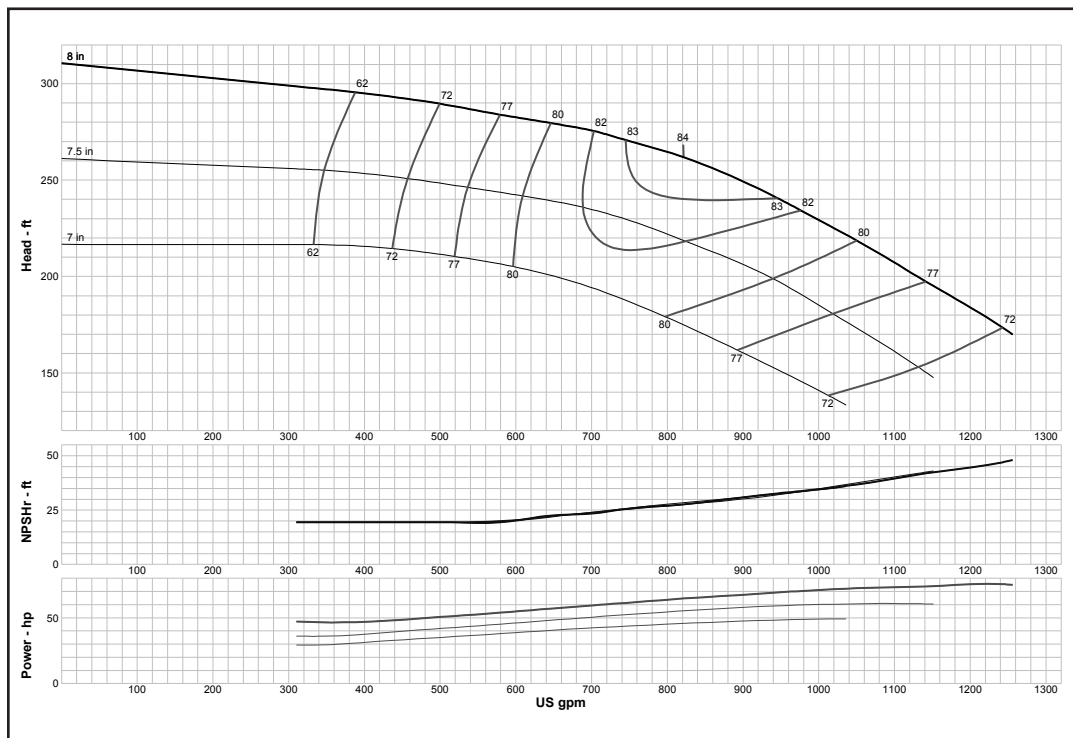
Disch size 6", 8", 10"

**TURBINE OPERATIONS**

Lubbock, Texas

BOWL PERFORMANCE CURVE BASED ON PUMPING CLEAR, NON-AERATED WATER. RATED POINT ONLY IS GUARANTEED. CURVES REPRESENT SINGLE STAGE PERFORMANCE BASED ON TEST OF MULTI-STAGE BOWL ASSEMBLY. EFFICIENCY CORRECTION APPLIES TO HEAD, FLOW AND HORSEPOWER FOR LESSER STAGES.

### MODEL 11RAHC (Effective July 1, 2014)



**Curve No. E6211RAPC1**

**Model 11RAHC**

**RPM 3550**

EFFICIENCY CORRECTION

1-STAGE	-5
2-STAGE	-3
3-STAGE	-1
4-STAGE	0

**Impeller ENCLOSED**

**Ns = 1560**

**K = 5.3**

Bowl O. D. 11.60 in

Bowl Lateral 0.38

Max. PSI 400

Disch size 6", 8", 10"

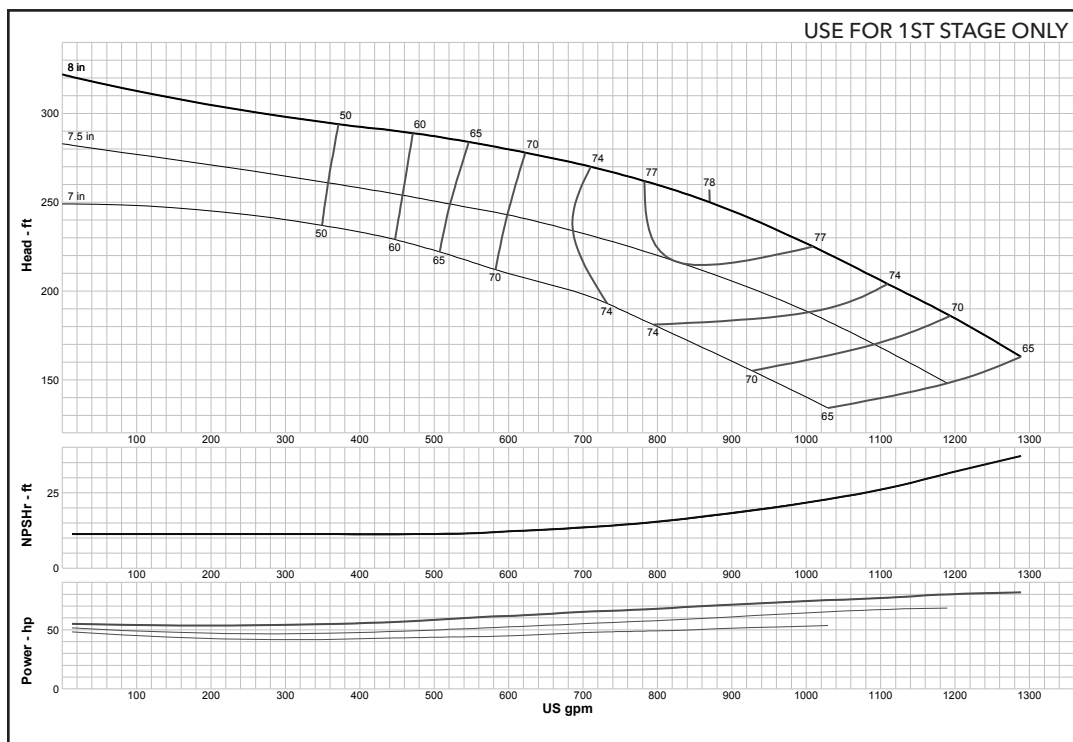
**TURBINE OPERATIONS**

Lubbock, Texas

BOWL PERFORMANCE CURVE BASED ON PUMPING CLEAR, NON-AERATED WATER. RATED POINT ONLY IS GUARANTEED. CURVES REPRESENT SINGLE STAGE PERFORMANCE BASED ON TEST OF MULTI-STAGE BOWL ASSEMBLY. EFFICIENCY CORRECTION APPLIES TO HEAD, FLOW AND HORSEPOWER FOR LESSER STAGES.

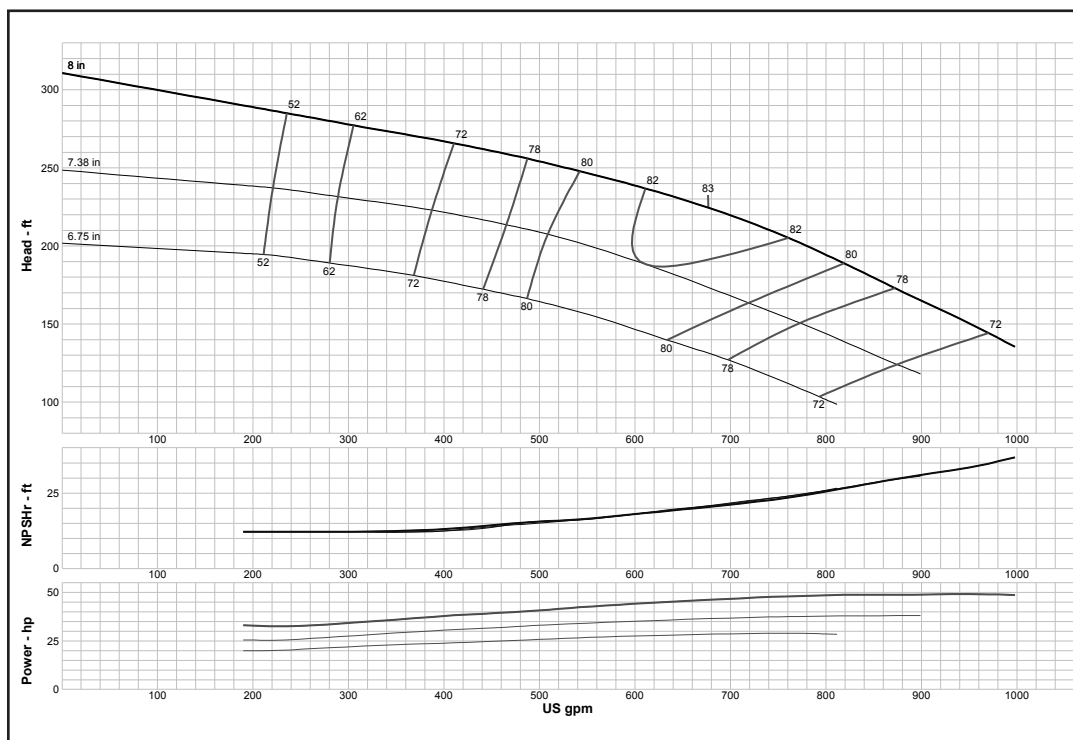
## Turbine

### MODEL 11RAHXC (Effective July 1, 2014)



<b>Curve No. E6211ABPC2</b>	
<b>Model</b>	<b>11RAHXC</b>
<b>RPM</b>	<b>3550</b>
EFFICIENCY CORRECTION	
1-STAGE	0
2-STAGE	0
3-STAGE	0
4-STAGE	0
<b>Impeller</b>	<b>ENCLOSED</b>
<b>Ns =</b>	<b>1663</b>
<b>K =</b>	<b>7.9</b>
Bowl O. D.	11.60 in
Bowl Lateral	0.37
Max. PSI	400
Disch size	6", 8", 10"
<b>TURBINE OPERATIONS</b>	
Lubbock, Texas	
BOWL PERFORMANCE CURVE BASED ON PUMPING CLEAR, NON-AERATED WATER. RATED POINT ONLY IS GUARANTEED. CURVES REPRESENT SINGLE STAGE PERFORMANCE BASED ON TEST OF MULTI-STAGE BOWL ASSEMBLY. EFFICIENCY CORRECTION APPLIES TO HEAD, FLOW AND HORSEPOWER FOR LESSER STAGES.	

### MODEL 11RALC (Effective July 1, 2014)

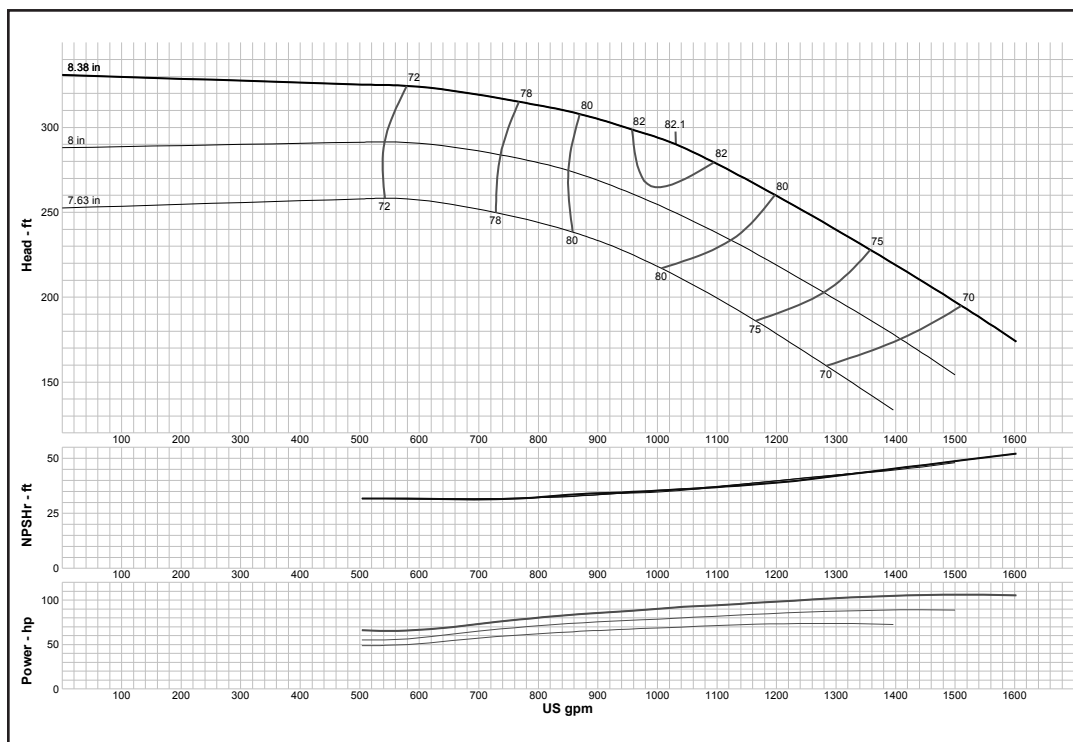


<b>Curve No. E6211RBPC1</b>	
<b>Model</b>	<b>11RALC</b>
<b>RPM</b>	<b>3550</b>
EFFICIENCY CORRECTION	
1-STAGE	-5
2-STAGE	-3
3-STAGE	-1
4-STAGE	0
<b>Impeller</b>	<b>ENCLOSED</b>
<b>Ns =</b>	<b>1585</b>
<b>K =</b>	<b>5.3</b>
Bowl O. D.	11.60 in
Bowl Lateral	0.38
Max. PSI	400
Disch size	6", 8", 10"
<b>TURBINE OPERATIONS</b>	
Lubbock, Texas	
BOWL PERFORMANCE CURVE BASED ON PUMPING CLEAR, NON-AERATED WATER. RATED POINT ONLY IS GUARANTEED. CURVES REPRESENT SINGLE STAGE PERFORMANCE BASED ON TEST OF MULTI-STAGE BOWL ASSEMBLY. EFFICIENCY CORRECTION APPLIES TO HEAD, FLOW AND HORSEPOWER FOR LESSER STAGES.	



## Turbine

### MODEL 11WAHC (Effective July 1, 2014)



**Curve No. E6211WAPCO**

**Model 11WAHC**

**RPM 3550**

EFFICIENCY CORRECTION

1-STAGE	-3
2-STAGE	-2
3-STAGE	-1
4-STAGE	0

**Impeller ENCLOSED**

**Ns = 1750**

**K = 6**

Bowl O. D. 11.00 in

Bowl Lateral 0.75

Max. PSI 380

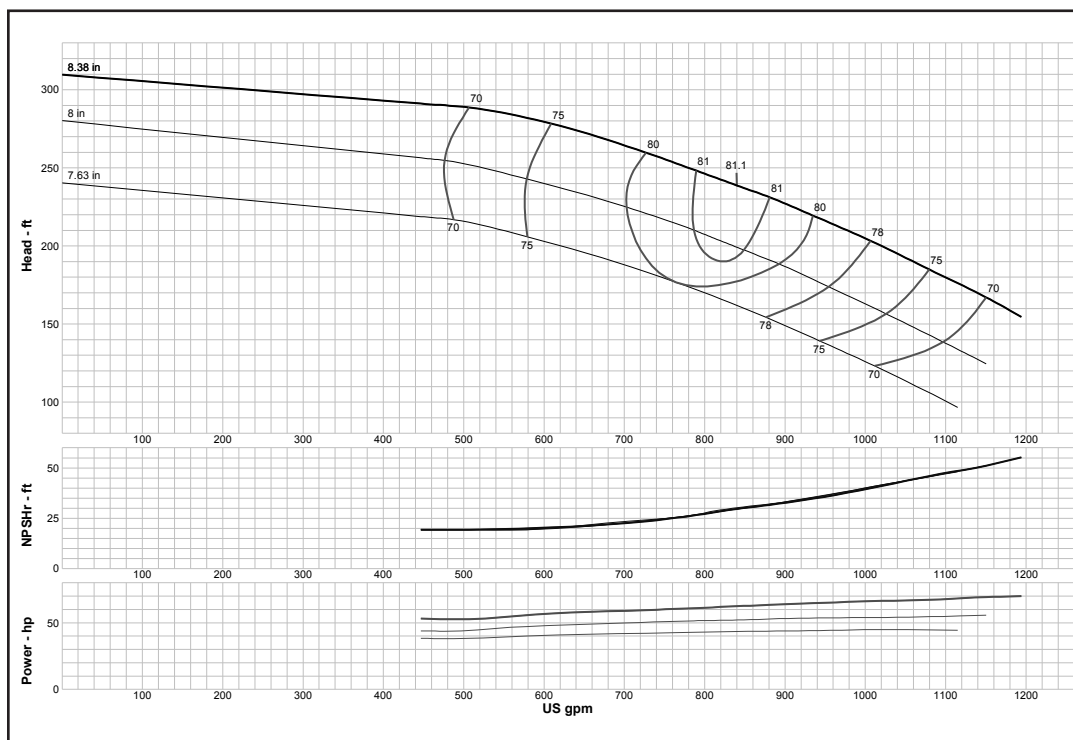
Disch size 5", 6", 8"

**TURBINE OPERATIONS**

Lubbock, Texas

BOWL PERFORMANCE CURVE BASED ON PUMPING CLEAR, NON-AERATED WATER. RATED POINT ONLY IS GUARANTEED. CURVES REPRESENT SINGLE STAGE PERFORMANCE BASED ON TEST OF MULTI-STAGE BOWL ASSEMBLY. EFFICIENCY CORRECTION APPLIES TO HEAD, FLOW AND HORSEPOWER FOR LESSER STAGES.

### MODEL 11WALC (Effective July 1, 2014)



**Curve No. E6211WBPCO**

**Model 11WALC**

**RPM 3550**

EFFICIENCY CORRECTION

1-STAGE	-3
2-STAGE	-2
3-STAGE	-1
4-STAGE	0

**Impeller ENCLOSED**

**Ns = 1650**

**K = 6**

Bowl O. D. 11.00 in

Bowl Lateral 0.75

Max. PSI 380

Disch size 5", 6", 8"

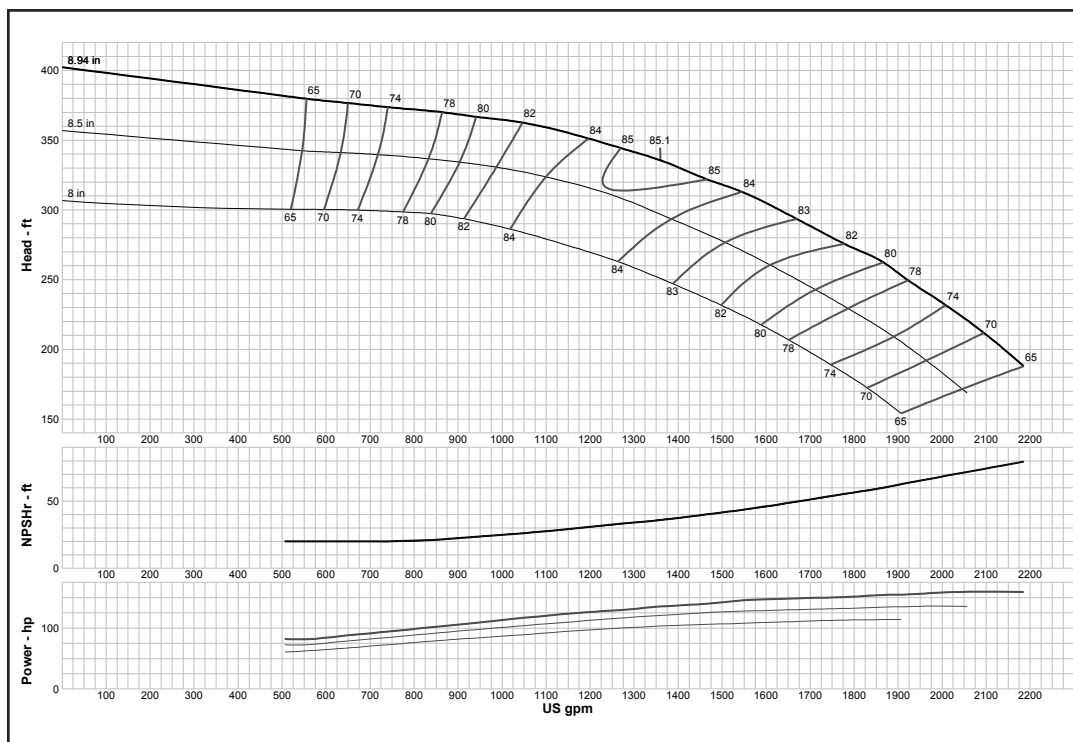
**TURBINE OPERATIONS**

Lubbock, Texas

BOWL PERFORMANCE CURVE BASED ON PUMPING CLEAR, NON-AERATED WATER. RATED POINT ONLY IS GUARANTEED. CURVES REPRESENT SINGLE STAGE PERFORMANCE BASED ON TEST OF MULTI-STAGE BOWL ASSEMBLY. EFFICIENCY CORRECTION APPLIES TO HEAD, FLOW AND HORSEPOWER FOR LESSER STAGES.

## Turbine

### MODEL 12WAHC (Effective July 1, 2014)



**Curve No. E60412WAPCO**

**Model 12WAHC**

**RPM 3550**

EFFICIENCY CORRECTION

1-STAGE	-3
2-STAGE	-2
3-STAGE	-1
4-STAGE	-0.5

**Impeller ENCLOSED**

**Ns = 1660**

**K = 7**

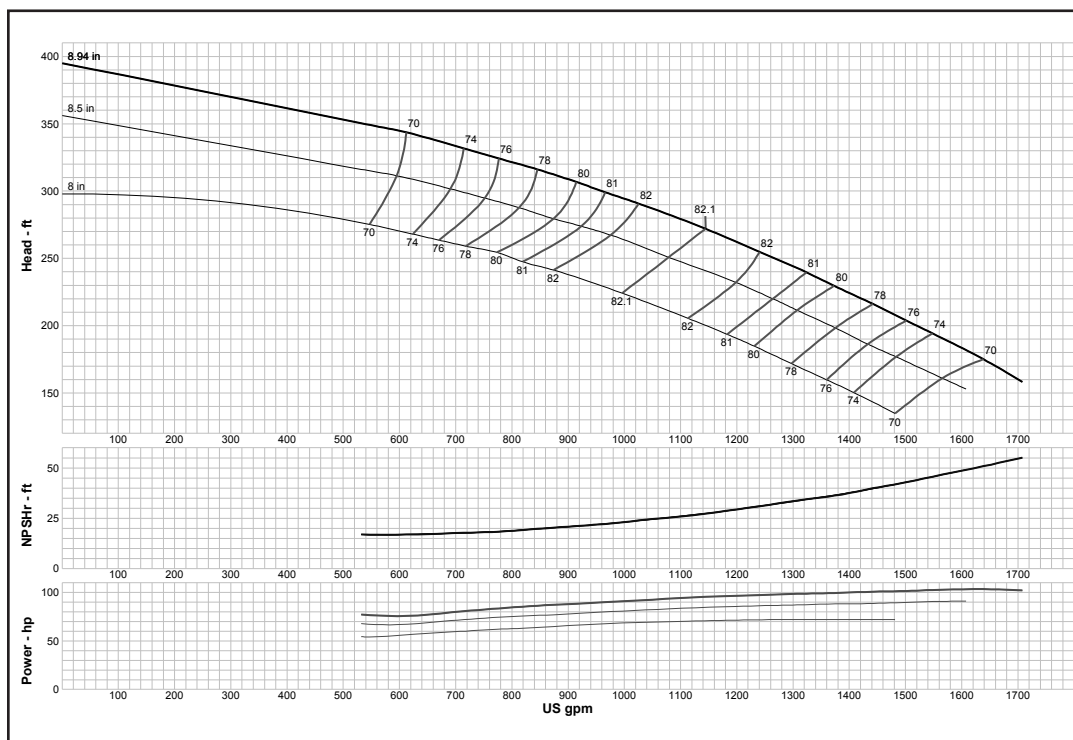
Bowl O. D.	11.60 in
Bowl Lateral	0.75
Max. PSI	390
Disch size	6", 8", 10"

**TURBINE OPERATIONS**

Lubbock, Texas

BOWL PERFORMANCE CURVE BASED ON PUMPING CLEAR, NON-AERATED WATER. RATED POINT ONLY IS GUARANTEED. CURVES REPRESENT SINGLE STAGE PERFORMANCE BASED ON TEST OF MULTI-STAGE BOWL ASSEMBLY. EFFICIENCY CORRECTION APPLIES TO HEAD, FLOW AND HORSEPOWER FOR LESSER STAGES.

### MODEL 12WALC (Effective July 1, 2014)



**Curve No. E60412WBPCO**

**Model 12WALC**

**RPM 3550**

EFFICIENCY CORRECTION

1-STAGE	-3
2-STAGE	-2
3-STAGE	-1
4-STAGE	-0.5

**Impeller ENCLOSED**

**Ns = 1725**

**K = 7**

Bowl O. D.	11.60 in
Bowl Lateral	0.75
Max. PSI	390
Disch size	6", 8", 10"

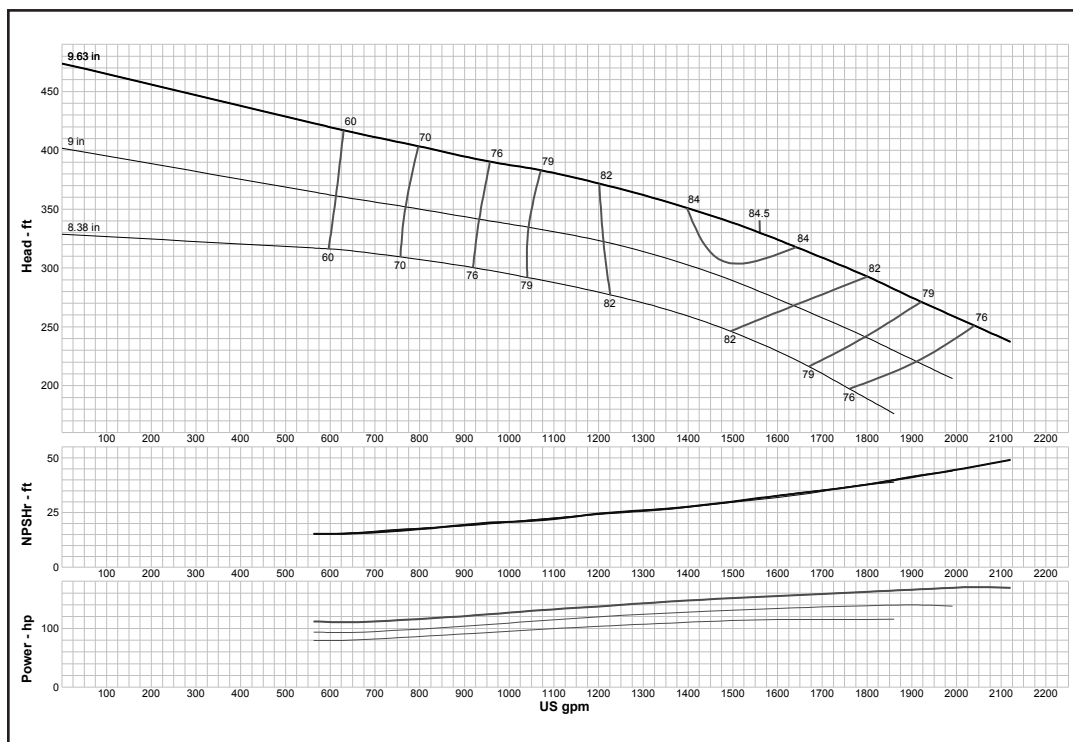
**TURBINE OPERATIONS**

Lubbock, Texas

BOWL PERFORMANCE CURVE BASED ON PUMPING CLEAR, NON-AERATED WATER. RATED POINT ONLY IS GUARANTEED. CURVES REPRESENT SINGLE STAGE PERFORMANCE BASED ON TEST OF MULTI-STAGE BOWL ASSEMBLY. EFFICIENCY CORRECTION APPLIES TO HEAD, FLOW AND HORSEPOWER FOR LESSER STAGES.

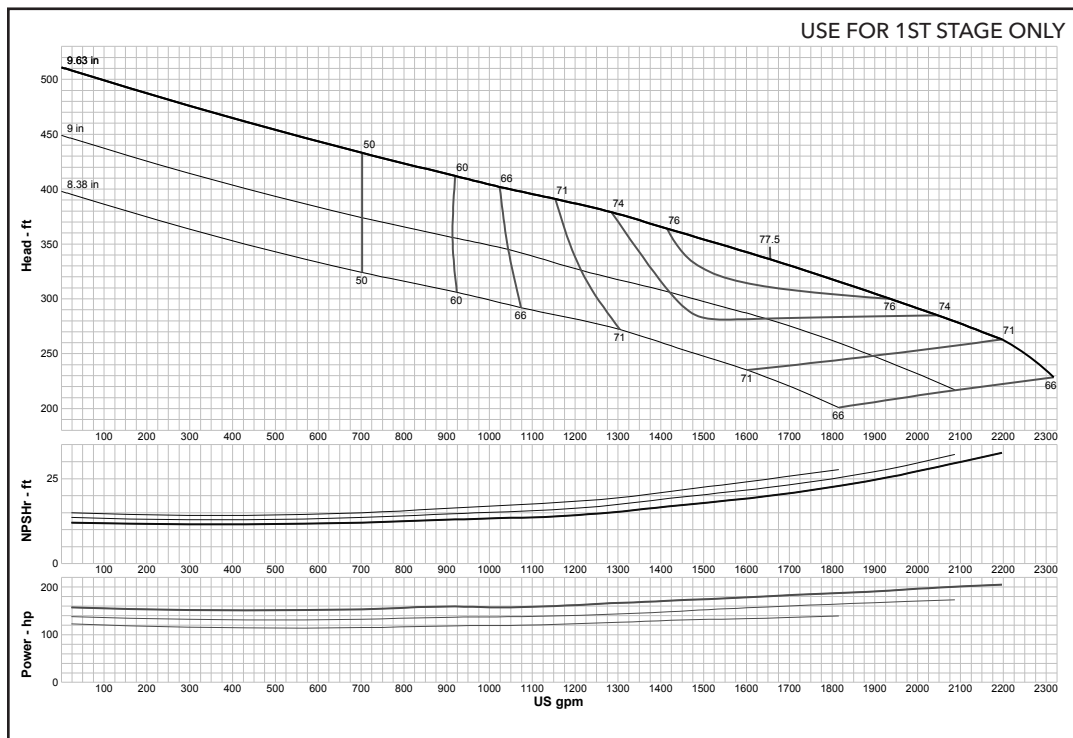
## Turbine

### MODEL 13RAHC (Effective July 1, 2014)



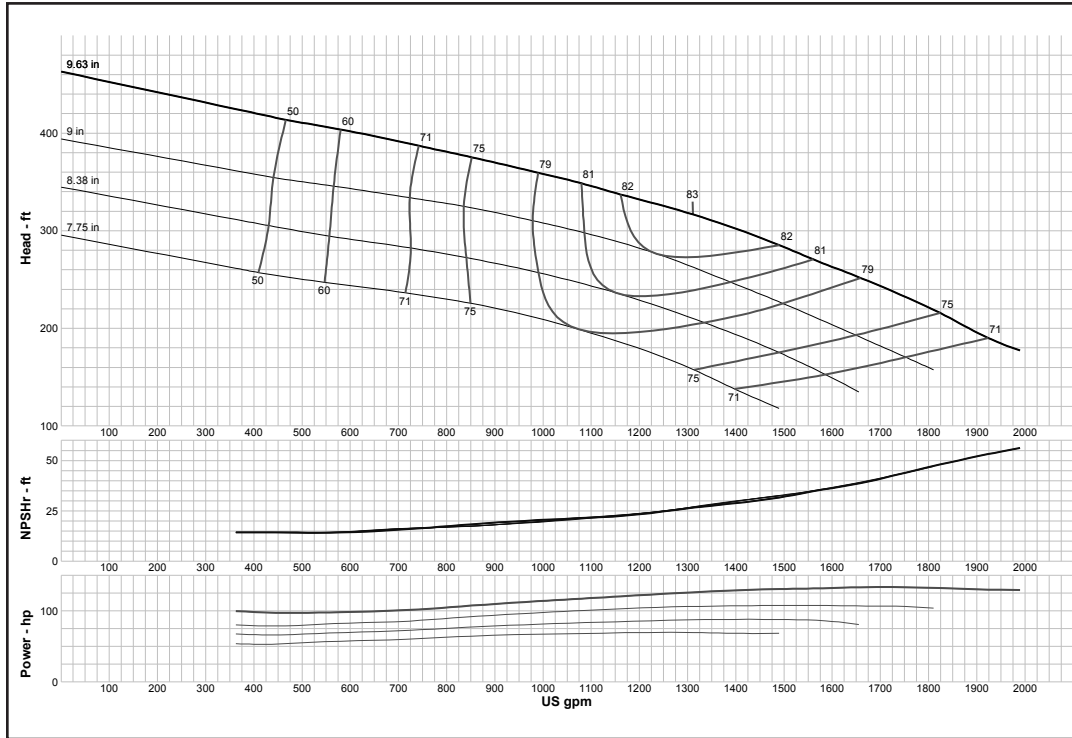
<b>Curve No. E6213RAPC1</b>	
<b>Model</b>	<b>13RAHC</b>
<b>RPM</b>	<b>3550</b>
EFFICIENCY CORRECTION	
1-STAGE	-5
2-STAGE	-2
3-STAGE	-1
4-STAGE	0
<b>Impeller</b>	<b>ENCLOSED</b>
<b>Ns =</b>	<b>1760</b>
<b>K =</b>	<b>7.9</b>
Bowl O. D.	13.38 in
Bowl Lateral	0.5
Max. PSI	430
Disch size	8", 10", 12"
<b>TURBINE OPERATIONS</b>	
Lubbock, Texas	
BOWL PERFORMANCE CURVE BASED ON PUMPING CLEAR, NON-AERATED WATER. RATED POINT ONLY IS GUARANTEED. CURVES REPRESENT SINGLE STAGE PERFORMANCE BASED ON TEST OF MULTI-STAGE BOWL ASSEMBLY. EFFICIENCY CORRECTION APPLIES TO HEAD, FLOW AND HORSEPOWER FOR LESSER STAGES.	

### MODEL 13RAHXC (Effective July 1, 2014)



<b>Curve No. E6213ABPC2</b>	
<b>Model</b>	<b>13RAHXC</b>
<b>RPM</b>	<b>3550</b>
EFFICIENCY CORRECTION	
1-STAGE	0
2-STAGE	0
3-STAGE	0
4-STAGE	0
<b>Impeller</b>	<b>ENCLOSED</b>
<b>Ns =</b>	<b>1843</b>
<b>K =</b>	<b>10</b>
Bowl O. D.	13.38 in
Bowl Lateral	0.5
Max. PSI	430
Disch size	8", 10", 12"
<b>TURBINE OPERATIONS</b>	
Lubbock, Texas	
BOWL PERFORMANCE CURVE BASED ON PUMPING CLEAR, NON-AERATED WATER. RATED POINT ONLY IS GUARANTEED. CURVES REPRESENT SINGLE STAGE PERFORMANCE BASED ON TEST OF MULTI-STAGE BOWL ASSEMBLY. EFFICIENCY CORRECTION APPLIES TO HEAD, FLOW AND HORSEPOWER FOR LESSER STAGES.	

# MODEL 13RALC *(Effective July 1, 2014)*



<b>Curve No. E6213RBPC1</b>	
<b>Model</b>	<b>13RALC</b>
<b>RPM</b>	<b>3550</b>
EFFICIENCY CORRECTION	
1-STAGE	-5
2-STAGE	-2
3-STAGE	-1
4-STAGE	0
<b>Impeller</b>	<b>ENCLOSED</b>
<b>Ns =</b>	<b>1690</b>
<b>K =</b>	<b>7.9</b>
Bowl O. D.	13.38 in
Bowl Lateral	0.5
Max. PSI	430
Disch size	8", 10", 12"
<b>TURBINE OPERATIONS</b>	
Lubbock, Texas	
BOWL PERFORMANCE CURVE BASED ON PUMPING CLEAR, NON-AERATED WATER. RATED POINT ONLY IS GUARANTEED. CURVES REPRESENT SINGLE STAGE PERFORMANCE BASED ON TEST OF MULTI-STAGE BOWL ASSEMBLY. EFFICIENCY CORRECTION APPLIES TO HEAD, FLOW AND HORSEPOWER FOR LESSER STAGES.	



Xylem Inc.  
 P.O. Box 5487  
 Lubbock, TX 79408  
 Tel +1.806.763.7867  
 Fax +1.800.453.4749  
[www.xyleminc.com](http://www.xyleminc.com)

Goulds is a registered trademark of Goulds Pumps, Inc. and is used under license.  
 © 2018 Xylem Inc. C3600 R3 January 2018